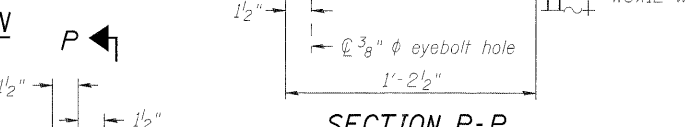
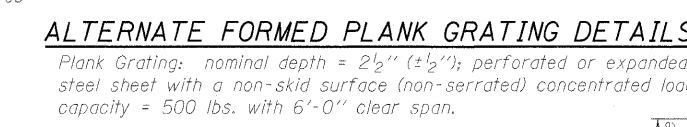


Welded Bar or Formed Plank Steel Grating
 Formed plank grating is considered an equal alternative to welded bar grating and may be substituted by Contractor at no change in contract cost.

FRONT ELEVATION
SIDE ELEVATION



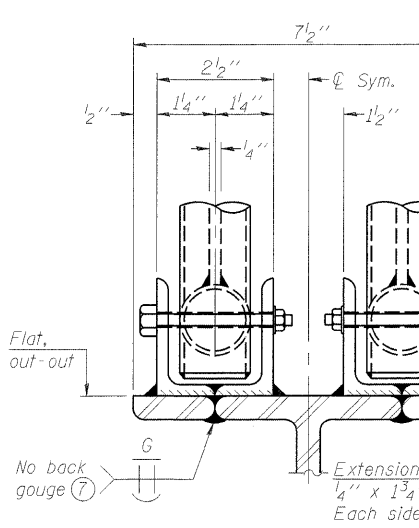
SECTION P-P



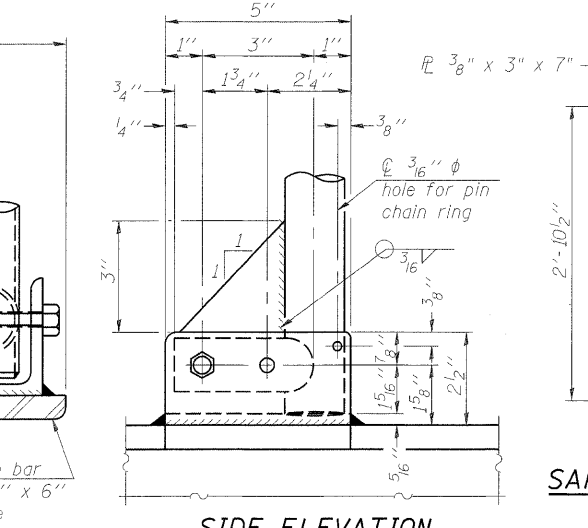
ALTERNATE FORMED PLANK GRATING DETAILS



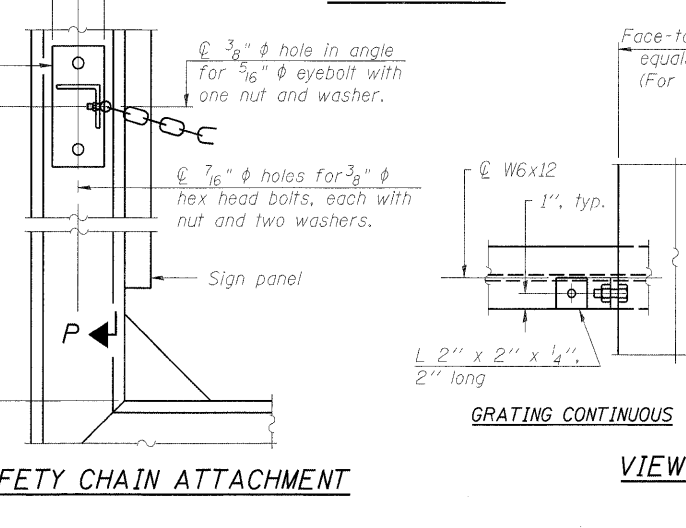
WALKWAY GRATING CONTINUOUS



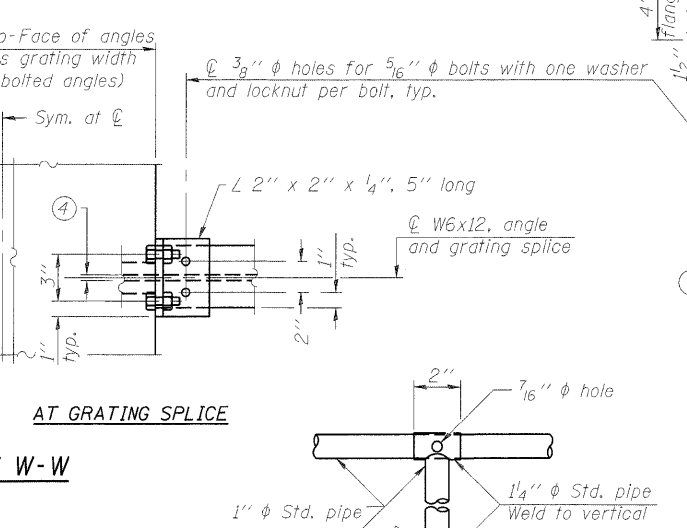
ELEVATION AT HANDRAIL JOINT



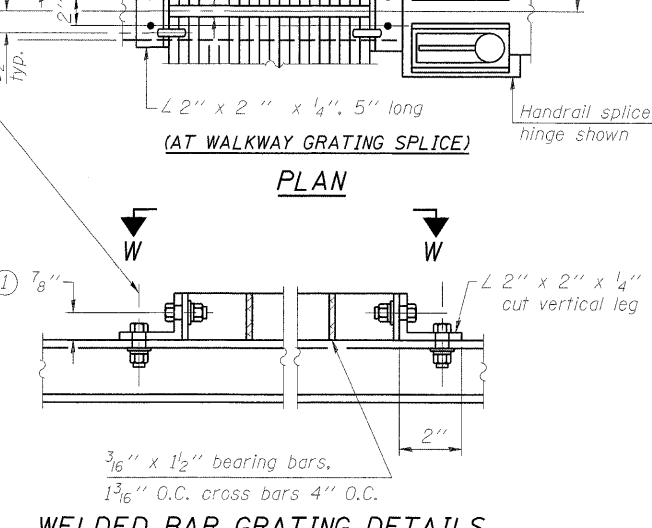
SIDE ELEVATION



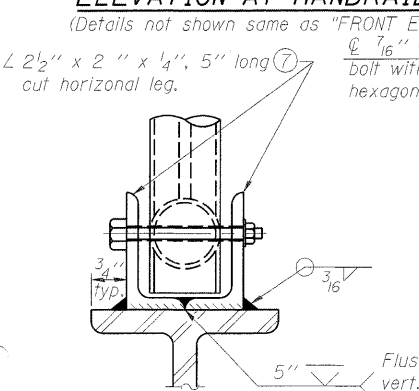
SAFETY CHAIN ATTACHMENT



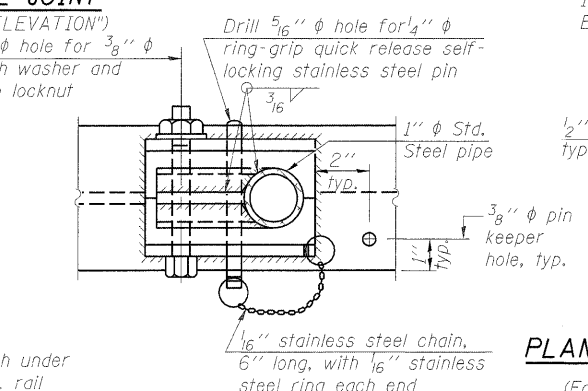
VIEW W-W



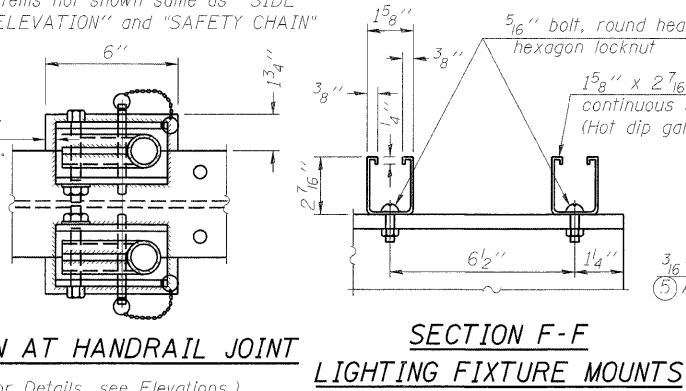
PLAN



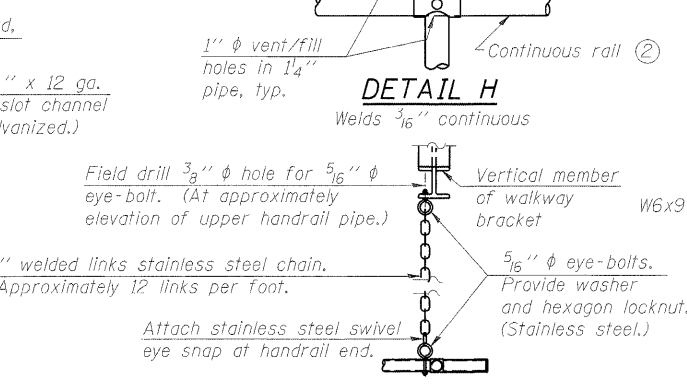
FRONT ELEVATION



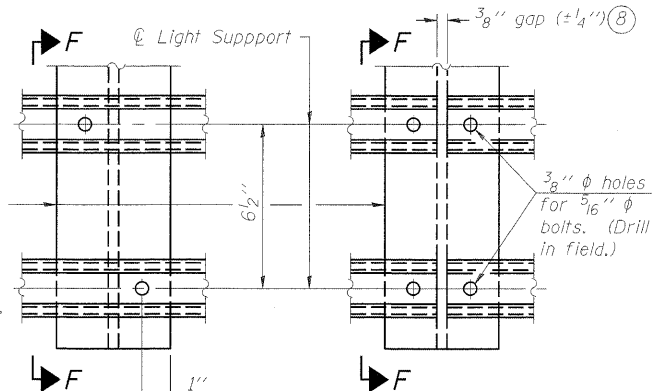
PLAN AT SINGLE HANDRAIL HINGE



SECTION F-F LIGHTING FIXTURE MOUNTS



DETAIL H SAFETY CHAIN



DETAIL F and G WELDED BAR GRATING DETAILS

- NOTES**
- Drilling holes in grating may be done in shop or field, based on Contractor's preference and subject to accurate alignment. Field drilled holes must be touched up with galvanized paint.
 - Horizontal rail member shall be continuous thru 1 1/4" φ pipe. Provide 7/16" φ hole in 1 1/4" φ pipe for 3/8" φ bolt. Field drill 7/16" φ hole in horizontal rail member. Provide washer and locknut for bolt. (Use 5/16" eyebolts in 7/16" φ holes on top rail at ends only.)
 - Install standard force-fit end caps or weld 1/8" end plates with 1/8" c.f.w. and grind smooth. (All rail ends.)
 - 3/8" (±1/4") gap between grating panels at splice.
 - Chain to be type 304L stainless steel suitable for prolonged exterior exposure. Approximately 3'-6" long chain per location. Maximum sag with handrail erected = 4".
 - 1/8" x 1/2" x 2" welded to handrail posts to protect locations that contact grating.
 - Extrusions may be used in lieu of details shown, with approval by Engineer.
 - Field cut ends of light support channels shall be free of burrs or hazardous projections and coated with zinc-rich primer or equivalent.

BM-4 12-1-08

	DESIGNED - SJB	REVISED - ---	STATE OF ILLINOIS DEPARTMENT OF TRANSPORTATION	BRIDGE MOUNTED SIGN STRUCTURES - WALKWAY DETAILS F.A.P. 392 FRANKLIN CONNECTOR (AT 26th STREET) STRUCTURE NO. 016-1064	F.A.P. RTE.	SECTION	COUNTY	TOTAL SHEETS	SHEET NO.
	DRAWN - SJB	REVISED - ---			392	1717-2-3B-R	COOK	114	26D
CHECKED - MBO	REVISED - ---				CONTRACT NO. 62197				
DATE - 1/13/09	REVISED - ---				FED. ROAD DIST. NO. 7 [ILLINOIS] FED. AID PROJECT				
PLLOT DATE = 2/2/2009				SCALE: NTS	SHEET NO. SA34 OF SA31 SHEETS	STA. 11+81.01			