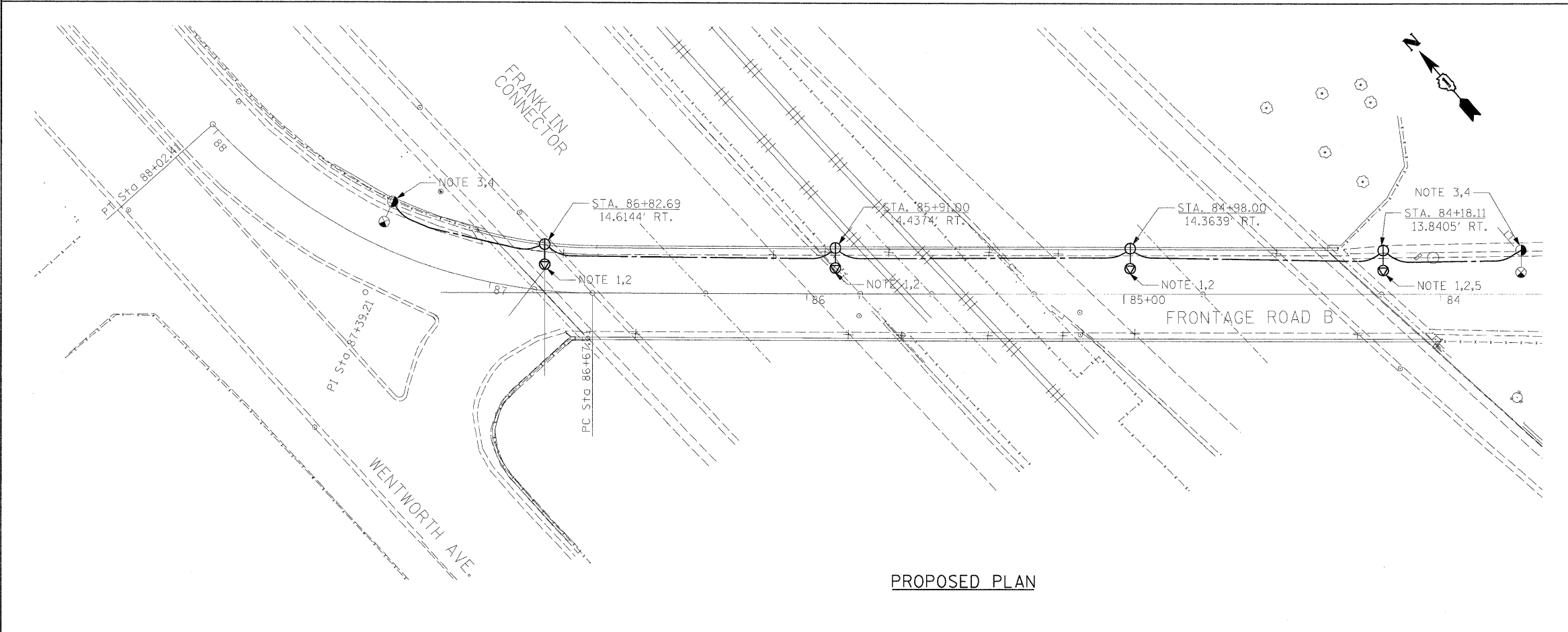


REMOVAL PLAN

- REMOVAL NOTES
- 1 - EXISTING H.P.S.V. LUMINAIRE AND MAST ARM TO REMAIN IN PLACE.
  - 2- REMOVE H.P.S.V. LUMINAIRE AND MAST. CLEAN AND STORE MAST FOR RE-INSTALLATION. RETURN LUMINAIRE TO THE OWNER.
  - 3- EXISTING POLE TO REMAIN IN PLACE.
  - 4- REMOVE POLE, CITY STEEL, ANCHOR BASE MOUNTED ON EXISTING PARAPET. CLEAN AND STORE FOR RE-INSTALLATION.
  - 5- EXISTING CABLE AND CONDUIT WHERE APPLICABLE TO BE REMOVED.
  - 6- INTERCEPT EXISTING CONDUIT AT THE FOUNDATION OF EXISTING LIGHTING UNIT TO REMAIN IN PLACE. REMOVE CONDUIT AND CABLE BACK TO LAST EXISTING POLE TO REMAIN IN-PLACE.
  - 7- REMAINING 2 POLE ON THE EAST SIDE OF WENTWORTH AVE. ON ATLAS 28, GROUP #18 WILL REMAIN DISCONNECTED DURING FRONTAGE ROAD B BRIDGE CONSTRUCTION. THEY SHALL BE RECONNECTED TO THE CIRCUIT DURING PROPOSED LIGHTING CONSTRUCTION.
  - 8- REMOVE POLE, CITY STEEL. CLEAN AND STORE FOR RE-INSTALLATION. REMOVE FOUNDATION.



PROPOSED PLAN

- PROPOSED NOTES
- 1- INSTALL EXISTING POLE STORED FROM REMOVAL.
  - 2- INSTALL EXISTING MAST STORED FROM REMOVAL. PROVIDE NEW 400W LUMINAIRE. RE-CONNECT TO EXISTING CONTROLLER AND CIRCUIT.
  3. PROVIDE NEW LIGHTING CABLES FROM LAST EXISTING LIGHTING UNIT REMAIN TO NEW PROPOSED BRIDGE LIGHTING.
  4. SPLICE THE NEW CABLES TO THE EXISTING LIGHTING CIRCUIT LOCATED AT BASE OF THE EXISTING POLE. SEE POLE BASE WIRING DIAGRAM IN MISCELLANEOUS ELECTRICAL DETAILS.
  - 5- POLE MOUNTED ON GRADE. PROVIDE NEW FOUNDATION AS SHOWN IN THE CITY OF CHICAGO STANDARD DETAIL 818.
  - 6- CONTRACTOR SHALL PROVIDE CABLES FROM POLE TO POLE WITH NO SPLICING.
  - 7- DURING THE CONSTRUCTION (3) POLES ON WENTWORTH AVE. SHALL REMAIN ACTIVE.
  - 8- ALL POLE SHALL BE PARAPET MOUNTED AND SHALL HAVE 11.5" BOLT CIRCLE AS SHOWN IN THE DETAILS U.N.O.

FILE NAME =	DESIGNED - HS	REVISED -	F.A.P. 392 FRANKLIN CONNECTOR (AT 26th STREET AND AT I-55 FRONTAGE ROAD B)	F.A.P. RTE.	SECTION	COUNTY	TOTAL SHEETS	SHEET NO.
ps:\2008\c\15800\Electrical\Cadd\E2.Frontage Road B Bridge Roadway Lighting Plan.dwg	DRAWN - HS	REVISED -	E2 FRONTAGE ROAD B BRIDGE ROADWAY LIGHTING PLAN	392	1717.2-3B-R	COOK	114	39
<b>JACOBS</b>	CHECKED - CDS	REVISED -	SCALE: 1" = 20'-0"	SHEET NO. OF SHEETS STA. TO STA.		CONTRACT NO. 62197		
PLCT DATE = 1/12/2009	DATE - 01/13/09	REVISED -	FED. ROAD DIST. NO. ILLINOIS FED. AID PROJECT					

STATE OF ILLINOIS  
DEPARTMENT OF TRANSPORTATION