

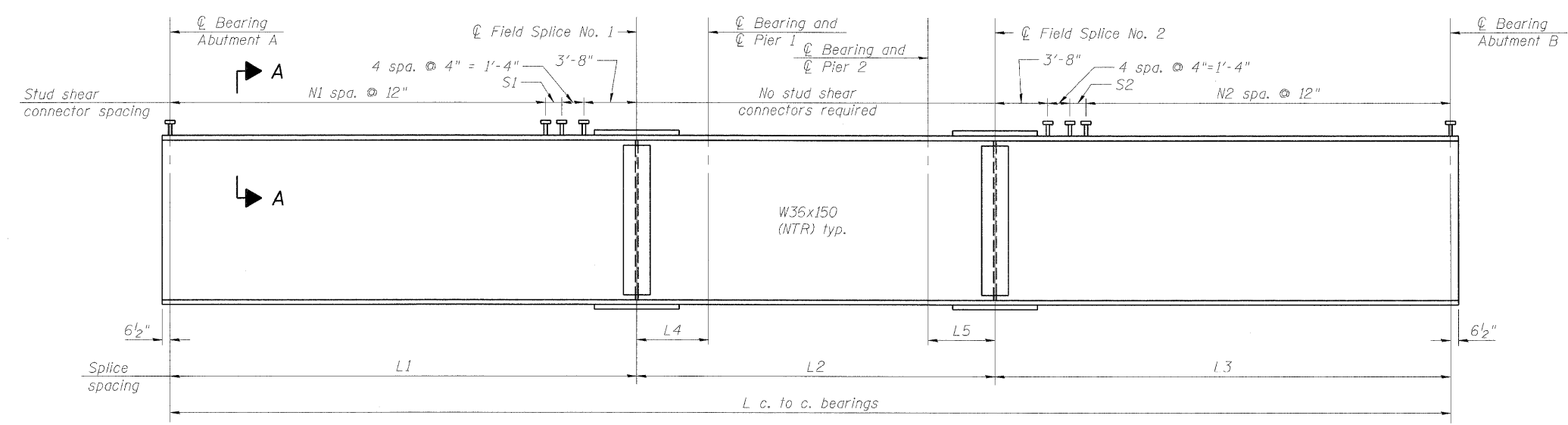
TABLE OF "L" DIMENSIONS

BEAM	L1	L2	L3	L4	L5	L
1	72'-7"	55'-8 ³ / ₄ "	74'-1 ¹ / ₁₆ "	11'-1 ⁵ / ₁₆ "	11'-9 ¹ / ₁₆ "	202'-5 ³ / ₁₆ "
2	72'-3 ¹ / ₂ "	55'-6 ³ / ₈ "	73'-6 ¹ / ₈ "	11'-0 ¹ / ₈ "	11'-7 ¹ / ₂ "	201'-3 ³ / ₄ "
3	72'-0"	55'-3 ¹ / ₁₆ "	72'-10 ¹ / ₈ "	11'-0 ³ / ₈ "	11'-5 ⁵ / ₁₆ "	200'-2 ⁵ / ₁₆ "
4	71'-8 ¹ / ₂ "	55'-0 ³ / ₄ "	72'-3 ⁵ / ₈ "	10'-11 ⁵ / ₁₆ "	11'-3 ³ / ₈ "	199'-0 ¹ / ₈ "
5	71'-5"	54'-10 ¹ / ₁₆ "	71'-8 ⁵ / ₁₆ "	10'-11 ¹ / ₁₆ "	11'-0 ¹ / ₈ "	197'-11 ¹ / ₁₆ "
6	71'-1 ¹ / ₂ "	54'-7 ³ / ₈ "	71'-1 ¹ / ₁₆ "	10'-11"	10'-10 ¹ / ₁₆ "	196'-9 ¹⁵ / ₁₆ "
7	70'-10"	54'-4 ³ / ₄ "	70'-5 ¹ / ₁₆ "	10'-10 ¹ / ₂ "	10'-8 ¹ / ₂ "	195'-8 ¹ / ₂ "
8	70'-6 ¹ / ₂ "	54'-2 ¹ / ₁₆ "	69'-10 ⁹ / ₁₆ "	10'-10 ¹ / ₁₆ "	10'-6 ¹ / ₄ "	194'-7 ¹ / ₁₆ "
9	70'-2 ¹ / ₁₆ "	53'-11 ³ / ₈ "	69'-3 ¹ / ₄ "	10'-9 ⁹ / ₁₆ "	10'-4 ¹ / ₁₆ "	193'-5 ⁵ / ₈ "
10	69'-11 ¹ / ₁₆ "	53'-8 ¹ / ₁₆ "	68'-8"	10'-9 ¹ / ₈ "	10'-1 ¹ / ₈ "	192'-4 ³ / ₁₆ "
11	69'-7 ¹ / ₁₆ "	53'-6"	68'-0 ³ / ₄ "	10'-8 ⁵ / ₈ "	9'-11 ⁵ / ₈ "	191'-2 ³ / ₄ "

TABLE OF "N" & "S" DIMENSIONS

BEAM	N1	N2	S1	S2
1	67	68	7"	1'-1 ¹ / ₁₆ "
2	67	68	3 ¹ / ₂ "	6 ¹ / ₈ "
3	66	67	1'-0"	10 ⁷ / ₈ "
4	66	67	8 ¹ / ₂ "	3 ⁵ / ₈ "
5	66	66	5"	8 ⁵ / ₁₆ "
6	65	65	1'-1 ¹ / ₂ "	1'-1 ¹ / ₁₆ "
7	65	65	10"	5 ¹³ / ₁₆ "
8	65	64	6 ¹ / ₂ "	10 ⁹ / ₁₆ "
9	64	64	1'-2 ¹⁵ / ₁₆ "	3 ¹ / ₄ "
10	64	63	11 ⁷ / ₁₆ "	8"
11	64	62	7 ⁵ / ₁₆ "	1'-0 ³ / ₄ "

FRAMING PLAN



BEAM ELEVATION

NOTES:

1. Load carrying components designated "NTR" shall conform to the Supplemental Requirements for Notch Toughness, Zone 2.
2. All structural steel for main beams and splice plates shall be AASHTO M270 Grade 50.
3. All new structural steel shall be hot dip galvanized in accordance with the Special Provision for "Hot Dip Galvanizing for Structural Steel."
4. All diaphragms shall be installed as steel is erected and secured with erection pins and bolts, except for the interior diaphragms between beams 6 and 7, where bolts in slots (beam 6 end) shall be finger tight until the second stage pour is complete. Individual cross frames or diaphragms at supports may be temporarily disconnected to install bearing anchor rods.