

F.A. RTE.		SECTION	COUNTY	TOTAL SHEETS	SHEET NO.
55		1717.2-3B-R	COOK	114	112B
STA.		TO STA.			
FED. ROAD DIST. NO.		ILLINOIS	FED. AID PROJECT		

ROUTE MARKERS

FOR U.S. ROUTES
M1-40-2424

FOR ILLINOIS ROUTES
M1-50-2424

R.R. UNMARKED ROUTES
SPECIAL 24" x 18" VARIABLE
4" BLACK LETTERS ON WHITE
REFLECTIVE BACKGROUND

ARROWS SIGNS

M5-1L-2115

M5-1R-2115

M6-1L-2115

M6-1R-2115

M6-3-2115

CARDINAL DIRECTION & DETOUR SIGNS

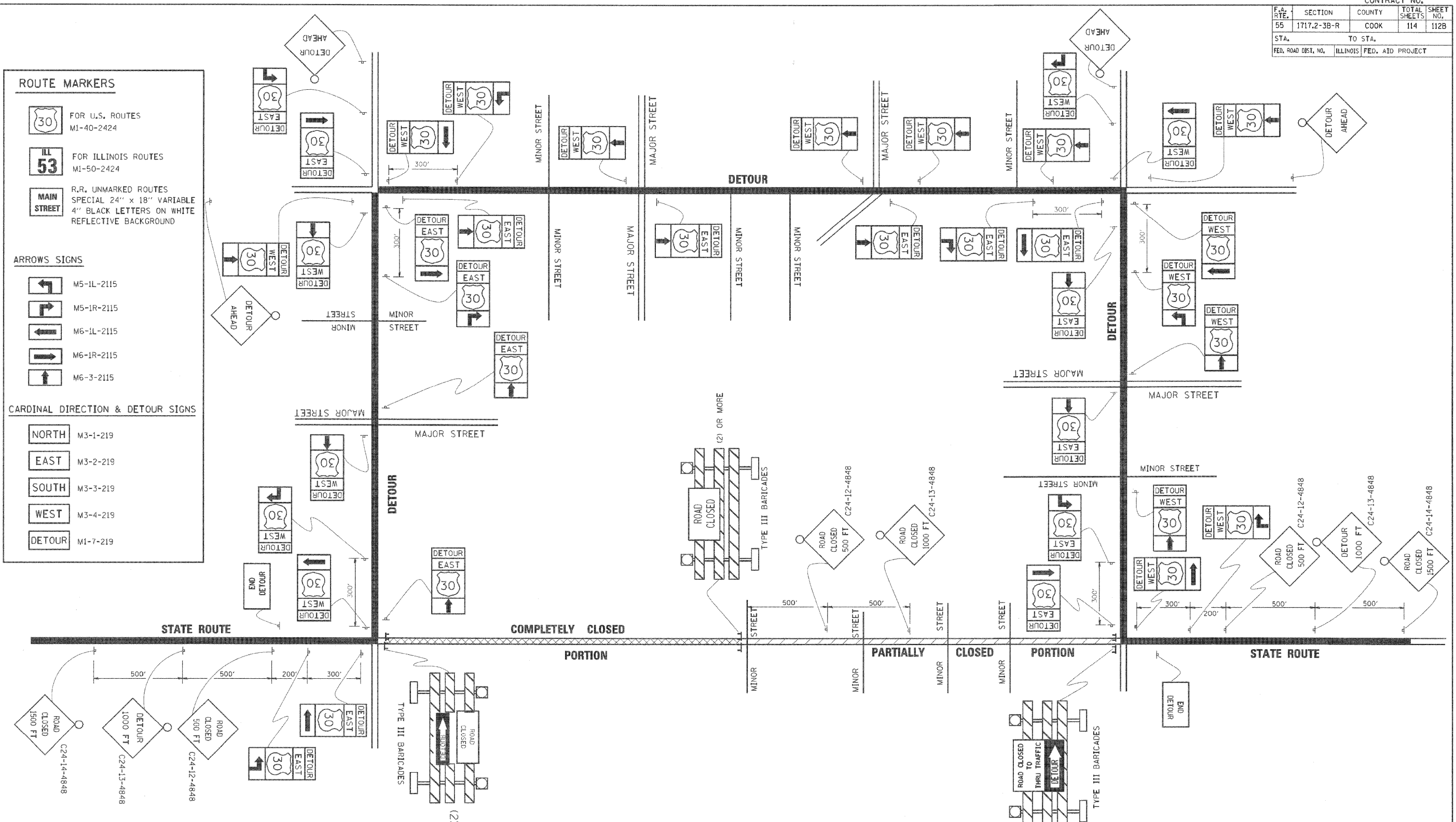
NORTH M3-1-219

EAST M3-2-219

SOUTH M3-3-219

WEST M3-4-219

DETOUR M1-7-219



REVISIONS	
NAME	DATE
	10/18/02

ILLINOIS DEPARTMENT OF TRANSPORTATION

TYPICAL MARKING
FOR CLOSING
STATE HIGHWAYS

SCALE: NONE

DRAWN BY
CHECKED BY
TC-21

PLOT DATE: 3/7/2007
 PLOT SCALE: 1/8"=1'-0"
 USER NAME: bauer-d