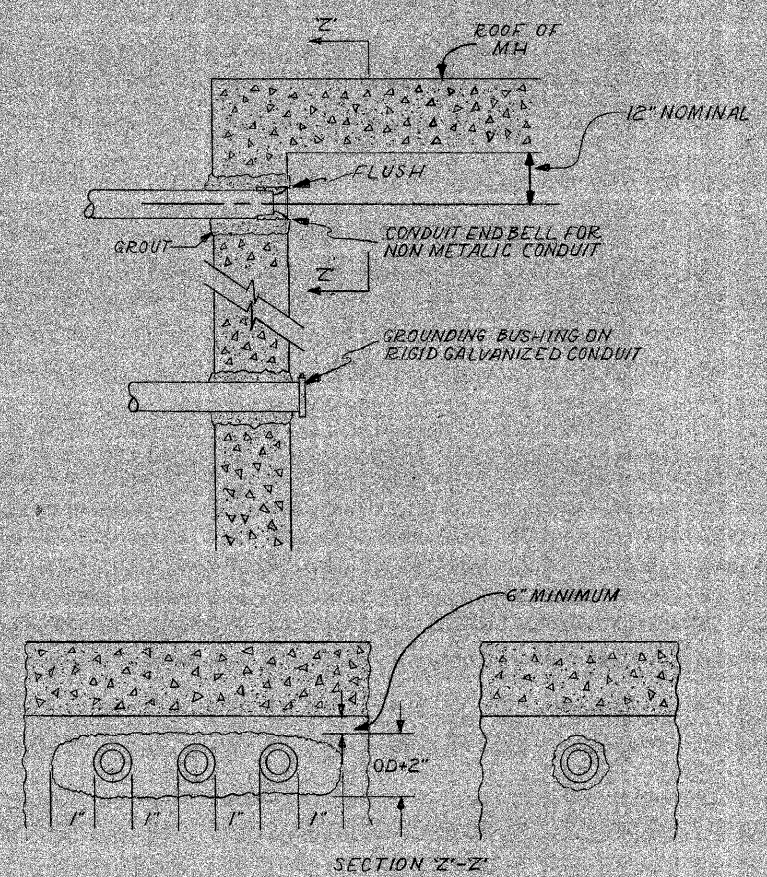


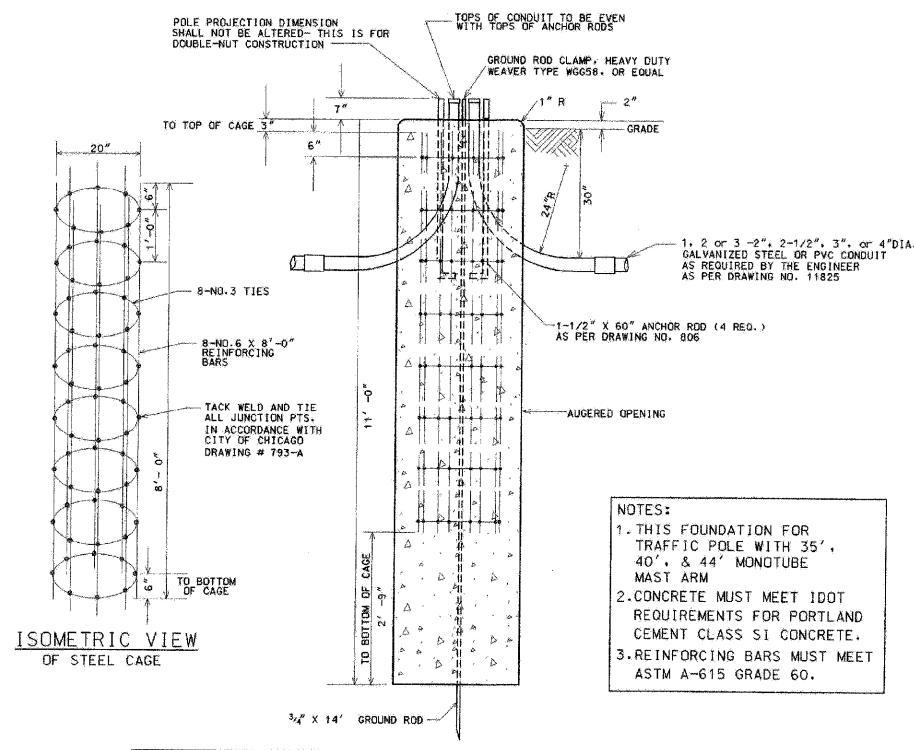
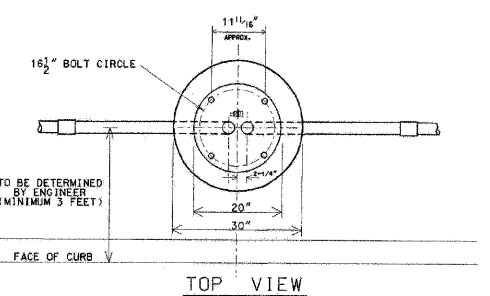
F.A.I. RTE.	SECTION	COUNTY	TOTAL SHEETS	SHEET NO.
57	2021.10-R	COOK	101	041
STA.	TO STA.			
FED. ROAD DIST. NO. 1 ILLINOIS FED. AID PROJECT				
CONTRACT NO. 62532				

CONDUIT INSTALLATION THROUGH EXISTING MANHOLE OR HANDHOLE WALL



OPENING THROUGH WALL TO BE KEPT TO MINIMUM SIZE TO ADMIT CONDUIT AND SUFFICIENT GROUT TO ASSURE SEALING WALL.

INSTALLATION METHOD OF INSTALLING CONDUIT THRU MANHOLE WALL		
CITY OF CHICAGO		
DEPT. OF STREETS AND SANITATION		
BUREAU OF ELECTRICITY		
DIVISION OF ELECTRICAL ENGINEERING		
DRAWN	CHECKED	ENGINEER
A.M. JOHNSON	R. SYCKOWSKI	R.L. MARTIN
<i>Thomas Kilduff</i>		DRG. NO.
ENGINEER OF ELECTRICITY		814
<i>Charles C. Bunkley</i>		DATE
8 1/2" X 14"	SCALE N.T.S.	8-13-01



- NOTES:
1. THIS FOUNDATION FOR TRAFFIC POLE WITH 35', 40', & 44' MONOTUBE MAST ARM
 2. CONCRETE MUST MEET IDOT REQUIREMENTS FOR PORTLAND CEMENT CLASS S1 CONCRETE.
 3. REINFORCING BARS MUST MEET ASTM A-615 GRADE 60.

CODE	COMMODITY	SIZE	QUANTITY
05-3267-2940	RED-MIX CONCRETE	CU. YD.	2.20
09-4001-	ELBOW, LARGE RADIUS	2" x 2-1/2" x 3" x 4"	AS REQUIRED
37-8180-0200	ANCHOR ROD	1-1/2" x 60"	4
05-5054-6910	RE-BAR CAGE	20" x 8' x 8'-0"	1
09-7796	GROUND ROD	3/4" x 14'-0"	1
09-2436-	GROUND ROD CLAMP	3/4"	1
09-2092-	GROUND BUSHING	2" x 2-1/2" x 3" x 4"	AS REQUIRED

8/21/02	SUPERCEDES DWG #817 DRAWN 4/20/01
DATE	REVISION
FOUNDATION FOR 34'-6" TRAFFIC SIGNAL POLE WITH 16 1/2" BOLT CIRCLE	
CITY OF CHICAGO	
DEPT. OF STREETS AND SANITATION	
BUREAU OF ELECTRICITY	
DIVISION OF ELECTRICAL ENGINEERING	
DRAFTSMAN	CHECKED
B. GARNSEY	R. CARTER
ELECTRICAL ENGINEER	ENGINEER
DRAWING NO.	817
DATE	8/21/02

REVISIONS	
NAME	DATE

ILLINOIS DEPARTMENT OF TRANSPORTATION
111TH STREET OVER
F.A.I. ROUTE 57 (INTERSTATE 57)
ELECTRICAL STANDARD DETAILS

SCALE: NONE
DATE: 01/16/09
DRAWN BY: N/A
CHECKED BY: N/A

TENG
TENG & ASSOCIATES, INC.
ENGINEERS/ARCHITECTS/PLANNERS
205 N. MICHIGAN AVE., CHICAGO, IL 60601
TELEPHONE: 312/616-0000

I:\DOCUMENTS\930606\CIVIL\CONCRETE\RD01.DWG
 1-18-2009 10:41:42
 1 2 3 4 5 6 7 8 9 10 11 12 13 14 15 16 17 18 19 20 21 22 23 24 25 26 27 28 29 30 31 32 33 34 35 36 37 38 39 40 41 42 43 44 45 46 47 48 49 50 51 52 53 54 55 56 57 58 59 60 61 62 63
 HFC/RRB