

F.A.U. RTE.	SECTION	COUNTY	TOTAL SHEETS	SHEET NO.
1459	0505.1, 0606 & 0707 RS-12	COOK	32	1
FED. ROAD DIST. NO.		ILLINOIS	CONTRACT NO. 62818	

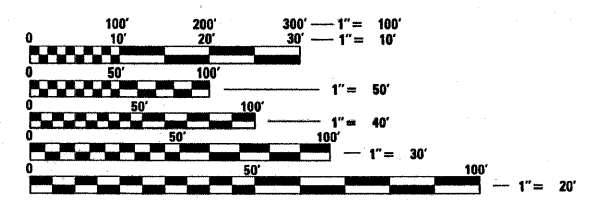
**STATE OF ILLINOIS**  
**DEPARTMENT OF TRANSPORTATION**  
**DIVISION OF HIGHWAYS**

**PROPOSED HIGHWAY PLANS**

**F.A.U. ROUTE 1459 (26TH STREET/25TH PLACE)**  
**SECTION: (0505.1, 0606 & 0707) RS-12**  
**IL. RTE. 43 (HARLEM AVE.) TO IL. RTE. 50 (CICERO AVE.)**  
**RESURFACING (MAINTENANCE)**  
**PROJECT: ESP-1459(004)**  
**COOK COUNTY**  
**C-91-319-04**

FOR INDEX OF SHEETS, SEE SHEET NO. 2

THE PROJECT IS LOCATED  
 IN THE CITY OF BERWYN & TOWN OF CICERO



FULL SIZE PLANS HAVE BEEN PREPARED USING STANDARD ENGINEERING SCALES. REDUCED SIZED PLANS WILL NOT CONFORM TO STANDARD SCALES. IN MAKING MEASUREMENTS ON REDUCED PLANS, THE ABOVE SCALES MAY BE USED.

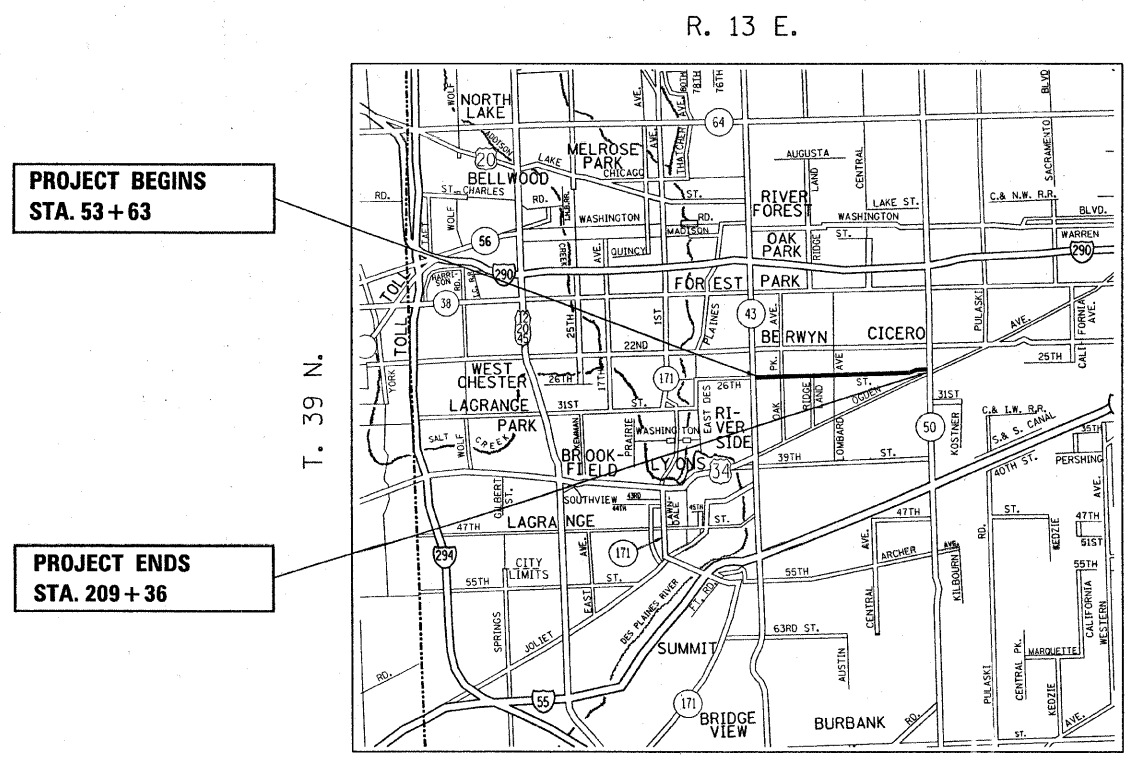
J.U.I.E.  
 JOINT UTILITY LOCATION INFORMATION FOR EXCAVATION  
 1-800-892-0123  
 OR 811

PROJECT ENGINEER - FRITZ GUILLAUME  
 PROJECT MANAGER - KEN ENG (847) 705-4247

CONTRACT NO. 62818



LOCATION OF SECTION INDICATED THUS: —



PROJECT BEGINS  
 STA. 53+63

PROJECT ENDS  
 STA. 209+36

RIVERSIDE TWP, BERWYN TWP, & CICERO TWP

GROSS & LENGTH OF PROJECT = 15,573 LIN. FT. = 2.95 MILES



MAP SCALE  
 NO SCALE

TRAFFIC DATA  
 2006 ADT = 13,500  
 SPEED LIMIT = 25 - 35 MPH

STATE OF ILLINOIS  
 DEPARTMENT OF TRANSPORTATION  
 DIVISION OF HIGHWAYS

SUBMITTED JANUARY 9, 2009

*Diane M. O'Keefe*  
 DEPUTY DIRECTOR OF HIGHWAYS, REGION ENGINEER

March 13, 2009  
*Charles D. Ingensoll*  
 ENGINEER OF DESIGN AND ENVIRONMENT

March 13, 2009  
*Christine M. Reed*  
 DIRECTOR OF HIGHWAYS, CHIEF ENGINEER

**PRINTED BY THE AUTHORITY  
 OF THE STATE OF ILLINOIS**