

F.A.P. RTE.	SECTION	COUNTY	TOTAL SHEETS	SHEET NO.
71	*	IROQUOIS	9	1

\*112RS-4 & 113RS-2

D-93-049-03

STATE OF ILLINOIS  
DEPARTMENT OF TRANSPORTATION  
DIVISION OF HIGHWAYS

**PROPOSED  
HIGHWAY PLANS**

FAP 71 (IL 54)  
112RS-4 & 113RS-2  
PROJECT ESP-0071(115)  
IROQUOIS COUNTY

C-93-137-03

RESURFACING OF IL 54  
FROM I-57 TO NORTH OF THAWVILLE



LOCATION OF SECTION INDICATED THUS: -

RURAL MINOR ARTERIAL

ADT (2007) = 1200

P.V. = 81.3% M.U. = 8.3% S.U. = 10.4%

STATE OF ILLINOIS  
DEPARTMENT OF TRANSPORTATION  
DIVISION OF HIGHWAYS

SUBMITTED 2-13 2009  
*James F. Reed*  
DEPUTY DIRECTOR OF HIGHWAYS, REGION ENGINEER  
March 13, 2009  
*Charles J. Ingersoll*  
ENGINEER OF DESIGN AND ENVIRONMENT  
March 13, 2009  
*Christine M. Reed*  
DIRECTOR OF HIGHWAYS, CHIEF ENGINEER

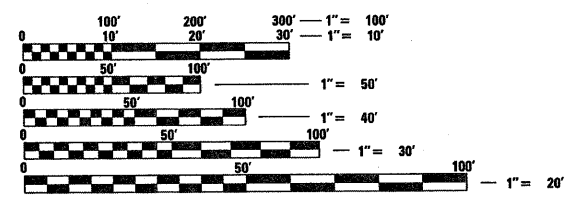
PRINTED BY THE AUTHORITY  
OF THE STATE OF ILLINOIS

INDEX OF SHEETS

- 1 COVER SHEET
- 2 GENERAL NOTES
- 3 SUMMARY OF QUANTITIES
- 4 TYPICAL SECTIONS
- 5-6 SCHEDULES
- 7 TIE POINTS
- 8 PROJECT LAYOUT
- 9 DETAILS

STANDARDS

- 000001-05 STANDARD SYMBOLS, ABBREVIATIONS AND PATTERNS
- 001006 DECIMAL OF AN INCH AND OF A FOOT
- 667101-01 PERMANENT SURVEY MARKERS
- 701011-02 OFF-ROAD MOVING OPERATIONS 2L, 2W, DAY ONLY
- 701006-03 OFF-ROAD OPERATIONS 2L, 2W, 15' (4.5 m) TO 24" (600 mm) FROM PAVEMENT EDGE
- 701011-02 OFF-ROAD MOVING OPERATIONS 2L, 2W, DAY ONLY
- 701301-03 LANE CLOSURE, 2L, 2W, SHORT TIME OPERATIONS
- 701306-02 LANE CLOSURE, 2L, 2W, SLOW MOVING OPERATIONS DAY ONLY, FOR SPEEDS GREATER THAN OR EQUAL TO 45 MPH
- 701311-03 LANE CLOSURE, 2L, 2W, MOVING OPERATIONS - DAY ONLY
- 701901-01 TRAFFIC CONTROL DEVICES
- 781001-03 TYPICAL APPLICATIONS RAISED REFLECTIVE PAVEMENT MARKERS

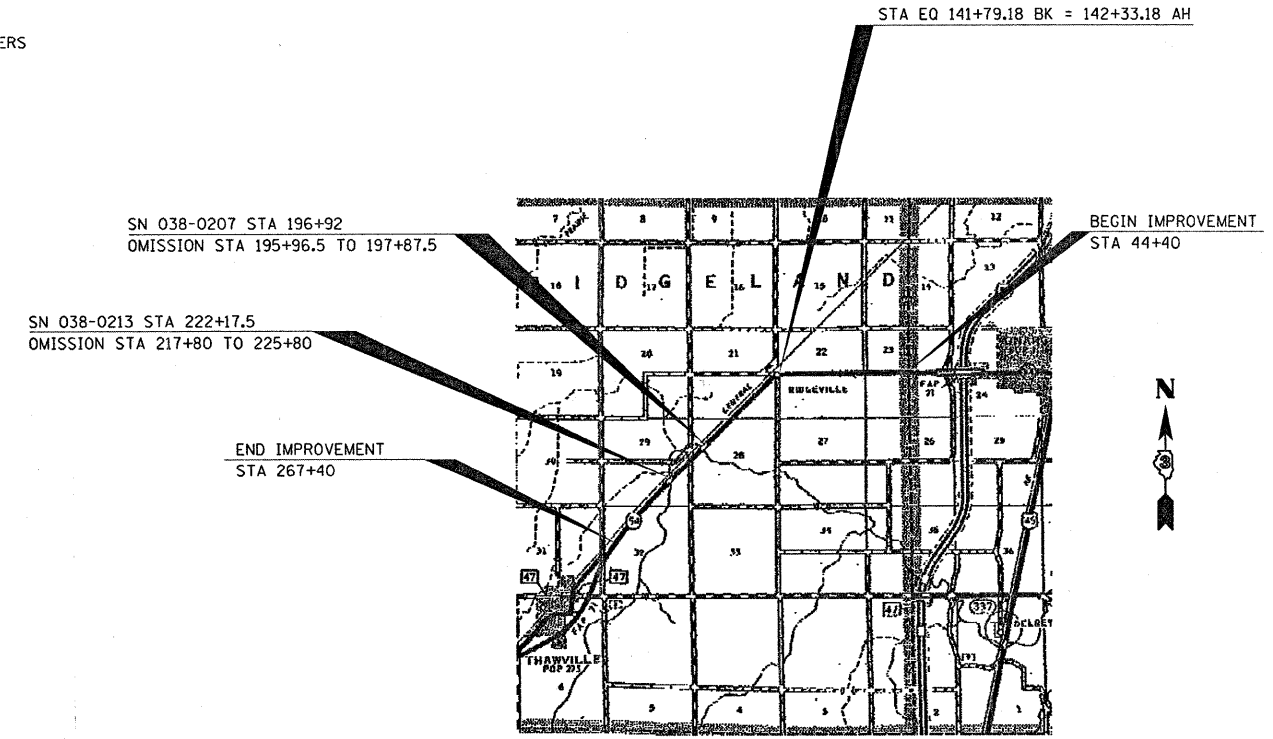


FULL SIZE PLANS HAVE BEEN PREPARED USING STANDARD ENGINEERING SCALES. REDUCED SIZED PLANS WILL NOT CONFORM TO STANDARD SCALES. IN MAKING MEASUREMENTS ON REDUCED PLANS, THE ABOVE SCALES MAY BE USED.

J.U.L.I.E.  
JOINT UTILITY LOCATION INFORMATION FOR EXCAVATION  
1-800-892-0123

DISTRICT 3 NO. (815) 434-6131  
PROJECT ENGINEER: JOE KANNEL  
UNIT CHIEF: MICHELE LINDEMANN  
TOWNSHIP: RIDGELAND, ONARGA

CONTRACT NO. 66368



LOCATION MAP  
NOT TO SCALE

GROSS LENGTH= 22246 FT = 4.213 MI  
NET LENGTH= 21255 FT = 4.026 MI

DATE: TIME: c:\pw\_wor-k\pw\dot\CARPENTER.D\ms 84136\ALLSHTS.DGN