

F.A.P. RTE.	SECTION	COUNTY	TOTAL SHEETS	SHEET NO.
71	*	IROQUOIS	9	1

*112RS-4 & 113RS-2

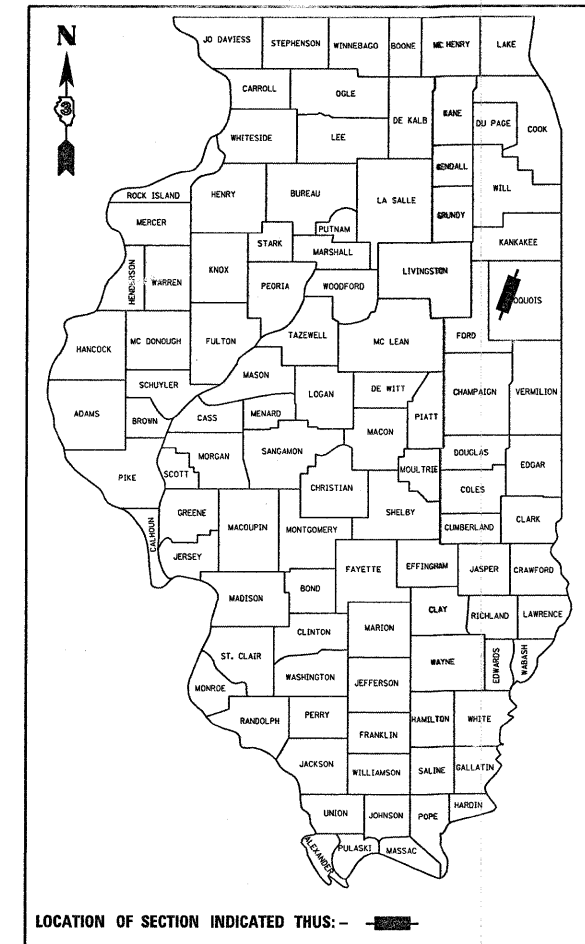
D-93-049-03

STATE OF ILLINOIS
DEPARTMENT OF TRANSPORTATION
DIVISION OF HIGHWAYS
**PROPOSED
HIGHWAY PLANS**

FAP 71 (IL 54)
112RS-4 & 113RS-2
PROJECT ESP-0071(115)
IROQUOIS COUNTY

C-93-137-03

RESURFACING OF IL 54
FROM I-57 TO NORTH OF THAWVILLE



RURAL MINOR ARTERIAL
ADT (2007) = 1200

P.V. = 81.3% M.U. = 8.3% S.U. = 10.4%

STATE OF ILLINOIS
DEPARTMENT OF TRANSPORTATION
DIVISION OF HIGHWAYS

SUBMITTED 2-13 2009

James F. Reed
DEPUTY DIRECTOR OF HIGHWAYS, REGION ENGINEER

March 13, 2009
Charles J. Ingersoll
ENGINEER OF DESIGN AND ENVIRONMENT

March 13, 2009
Christine M. Reed
DIRECTOR OF HIGHWAYS, CHIEF ENGINEER

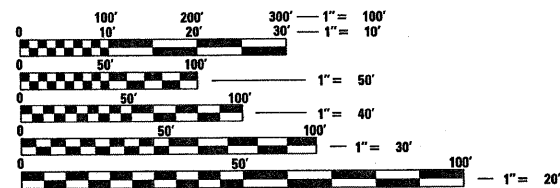
PRINTED BY THE AUTHORITY
OF THE STATE OF ILLINOIS

INDEX OF SHEETS

- 1 COVER SHEET
- 2 GENERAL NOTES
- 3 SUMMARY OF QUANTITIES
- 4 TYPICAL SECTIONS
- 5-6 SCHEDULES
- 7 TIE POINTS
- 8 PROJECT LAYOUT
- 9 DETAILS

STANDARDS

- 000001-05 STANDARD SYMBOLS, ABBREVIATIONS AND PATTERNS
- 001006 DECIMAL OF AN INCH AND OF A FOOT
- 667101-01 PERMANENT SURVEY MARKERS
- 701011-02 OFF-ROAD MOVING OPERATIONS 2L, 2W, DAY ONLY
- 701006-03 OFF-ROAD OPERATIONS 2L, 2W, 15' (4.5 m) TO 24' (600 mm) FROM PAVEMENT EDGE
- 701011-02 OFF-ROAD MOVING OPERATIONS 2L, 2W, DAY ONLY
- 701301-03 LANE CLOSURE, 2L, 2W, SHORT TIME OPERATIONS
- 701306-02 LANE CLOSURE, 2L, 2W, SLOW MOVING OPERATIONS DAY ONLY, FOR SPEEDS GREATER THAN OR EQUAL TO 45 MPH
- 701311-03 LANE CLOSURE, 2L, 2W, MOVING OPERATIONS - DAY ONLY
- 701901-01 TRAFFIC CONTROL DEVICES
- 781001-03 TYPICAL APPLICATIONS RAISED REFLECTIVE PAVEMENT MARKERS



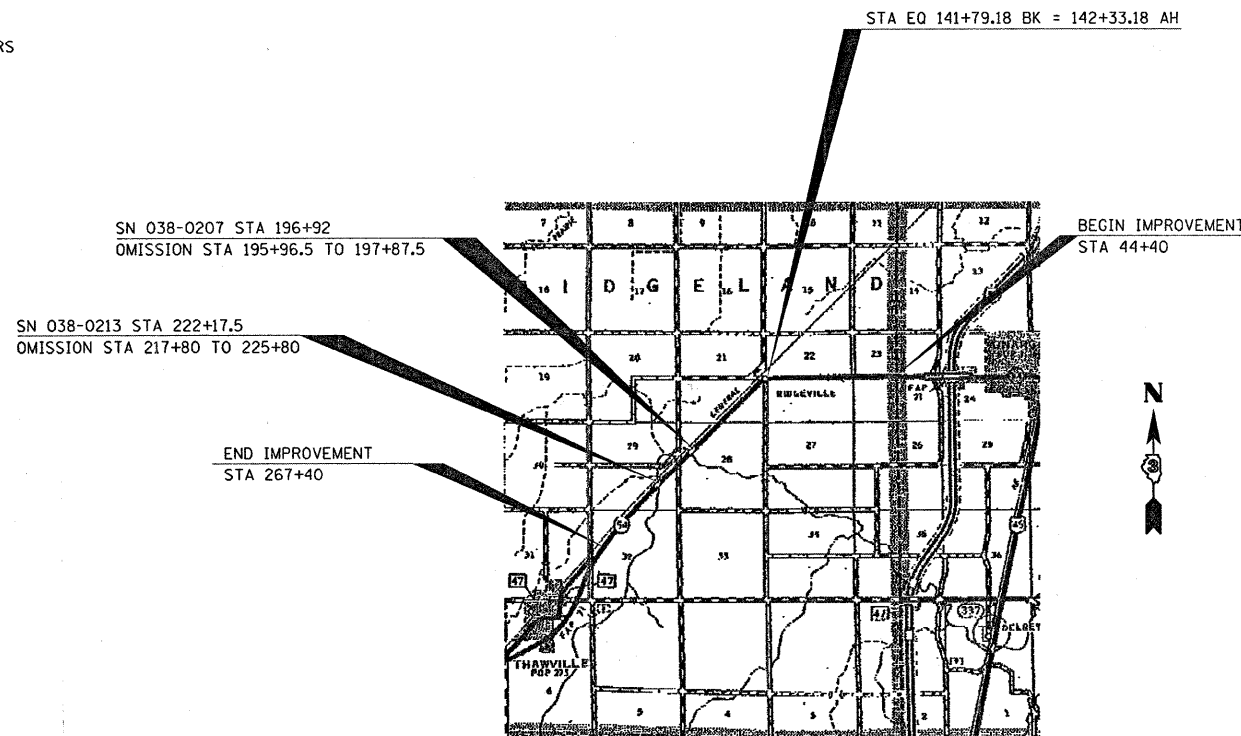
FULL SIZE PLANS HAVE BEEN PREPARED USING STANDARD ENGINEERING SCALES. REDUCED SIZED PLANS WILL NOT CONFORM TO STANDARD SCALES. IN MAKING MEASUREMENTS ON REDUCED PLANS, THE ABOVE SCALES MAY BE USED.

J.U.L.I.E.
JOINT UTILITY LOCATION INFORMATION FOR EXCAVATION
1-800-892-0123

DISTRICT 3 NO. (815) 434-6131

PROJECT ENGINEER: JOE KANNEL
UNIT CHIEF: MICHELE LINDEMANN
TOWNSHIP: RIDGELAND, ONARGA

CONTRACT NO. 66368



LOCATION MAP
NOT TO SCALE

GROSS LENGTH= 22246 FT = 4.213 MI
NET LENGTH= 21255 FT = 4.026 MI

DATE: TIME
c:\pw_wor\k\pw\DOT\CARPENTER.D\ms 84136\ALLSHTS.DGN

F.A.P. RTE.	SECTION	COUNTY	TOTAL SHEETS	SHEET NO.
71		IROQUOIS	9	2
STA.		TO STA.		
FED. ROAD DIST. NO.		ILLINOIS	FED. AID PROJECT	

*112RS-4 & 113RS-2

GENERAL NOTES

THE THICKNESS OF HMA SHOWN ON THE PLANS IS THE NOMINAL THICKNESS. DEVIATIONS FROM THE NOMINAL THICKNESS WILL BE PERMITTED WHEN SUCH DEVIATIONS OCCUR DUE TO IRREGULARITIES IN THE EXISTING SURFACE OR BASE ON WHICH THE HMA IS PLACED.

THE HMA SURFACE OF ALL MAILBOX TURNOUTS, PRIVATE ENTRANCES, COMMERCIAL ENTRANCES, AND SIDE ROADS SHALL BE MADE NEATLY, IN A WORKMANLIKE MANNER, AND SHALL ACCURATELY CONFORM TO THE SHAPES AND DIMENSIONS SHOWN ON THE PLAN DETAILS. IF REQUIRED BY THE ENGINEER, THE CONTRACTOR SHALL BE REQUIRED TO SAW CUT THE HMA SURFACE TO CONFORM TO THE SHAPES AND DIMENSIONS SHOWN ON THE PLAN DETAILS. THIS WORK SHALL BE INCLUDED IN THE COST OF THE HMA SURFACE.

THE ENGINEER WILL BE THE SOLE JUDGE CONCERNING CURING TIME FOR THE VARIOUS HMA LIFTS.

FOR STABILIZATION, ALL TYPE III BARRICADES SHALL REQUIRE A MINIMUM OF FOUR SAND BAGS PER BARRICADE.

SEEDING SHALL NOT BE PERMITTED AT ANY TIME WHEN THE GROUND IS FROZEN, WET, OR IN AN UNTILLABLE CONDITION. LOCATIONS TO BE SEEDED WILL BE DETERMINED BY THE ENGINEER.

THE FINISHED EARTHWORK SHALL HAVE A VEGETATION SUSTAINING SOIL COVERING THE TOP FOUR INCHES IN AREAS TO BE SEEDED OR SODDED. THE VEGETATION SUSTAINING SOIL REQUIRED WILL NOT BE PAID FOR SEPARATELY BUT SHALL BE INCLUDED IN THE COST OF FURNISHED EXCAVATION.

ON EXISTING PAVEMENT WHICH MAY BE SUPERELEVATED, THE NEW HMA PAVEMENT SHALL BE BUILT WITH THE SAME SUPERELEVATION UNLESS NEW SUPERELEVATION RATES ARE GIVEN ON THE PLANS.

ALL ELEVATIONS REFERRING TO U.S.G.S. MEAN SEA LEVEL DATUM.

ABANDONED UNDERGROUND UTILITIES THAT CONFLICT WITH CONSTRUCTION SHALL BE DISPOSED OF OUTSIDE THE LIMITS OF THE RIGHT OF WAY ACCORDING TO ARTICLE 202.03 OF THE STANDARD SPECIFICATIONS AND AS DIRECTED BY THE ENGINEER. THIS WORK WILL NOT BE PAID FOR SEPARATELY, BUT SHALL BE INCLUDED IN THE COST OF EARTH EXCAVATION.

ANY REFERENCE TO A STANDARD IN THESE PLANS SHALL BE INTERPRETED TO MEAN THE EDITION AS INDICATED BY THE SUBNUMBER SHOWN IN THE LIST OF STANDARDS OR THE COPY INCLUDED IN THESE PLANS.

THE FOLLOWING RATES OF APPLICATION HAVE BEEN USED IN CALCULATING PLAN QUANTITIES:

GRANULAR MATERIALS	2.05	TONS / CU YD
BIT MATERIALS (PRIME COAT) ON AGGREGATE BASES	0.375	GAL / SQ YD
BITUMINOUS MATERIALS (PRIME COAT)	0.08	GAL / SQ YD
FOR ADDITIONAL HMA LIFTS "FOG COAT"	0.05	GAL / SQ YD
AGGREGATE PRIME COAT	0.002	TONS / SQ YD
HMA RESURFACING	112	LBS / SQ YD / IN
SHORT TERM PAVEMENT MARKING	10	FT / 100 FT OF APPLICATION
MIX FOR CRACKS, JTS & FLGWYS	0.0003	TONS / SQ YD
LEVEL BINDER (HAND METHOD)	0.0005	TONS / SQ YD

THE CONTRACTOR SHALL CONTACT JULIE AT LEAST 48 HOURS PRIOR TO EXCAVATION TO DETERMINE WHICH UTILITIES ARE IN THE AREA.

STATE OF ILLINOIS
DEPARTMENT OF TRANSPORTATION
DISTRICT THREE

PREPARED BY: *[Signature]*
DISTRICT STUDIES & PLANS ENGINEER

DATE: 2.3.09

EXAMINED BY: *[Signature]*
DISTRICT CONSTRUCTION ENGINEER

Wayne L. Phillips
DISTRICT MATERIALS ENGINEER

[Signature]
DISTRICT OPERATIONS ENGINEER

**GENERAL
NOTES**

F.A.P. RTE.	SECTION	COUNTY	TOTAL SHEETS	SHEET NO.
71	*	IROQUOIS	9	3
STA.		TO STA.		
FED. ROAD DIST. NO.	ILLINOIS	FED. AID PROJECT		

*112RS-4 & 113RS-2

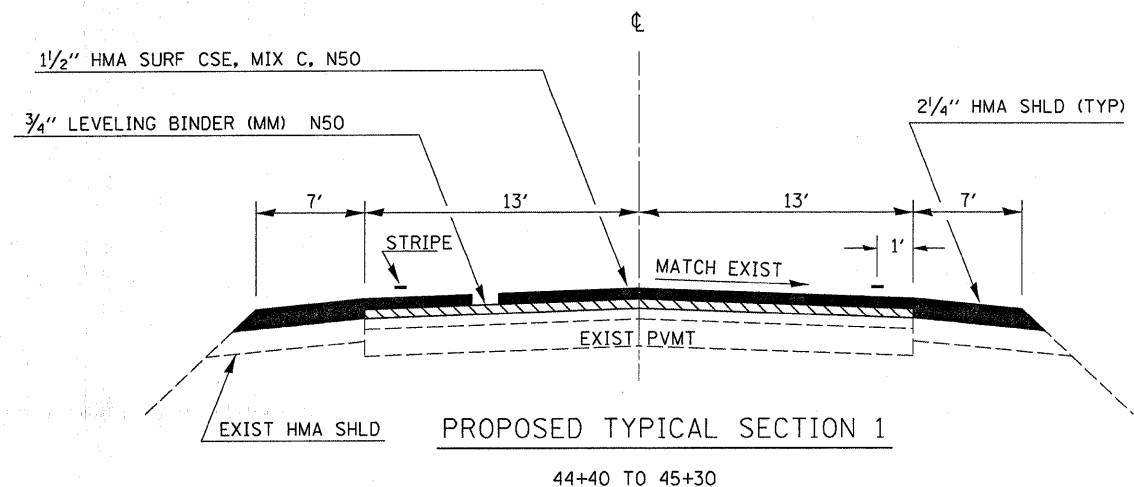
CODE NO.	CONSTRUCTION CODE TYPE: ITEM	UNIT	100% FED
			I000 TOTAL QUANT
20400800	FURNISHED EXCAVATION	CU YD	11
25000200	SEEDING, CLASS 2	ACRE	0.1
25000400	NITROGEN FERTILIZER NUTRIENT	POUND	7
25000500	PHOSPHORUS FERTILIZER NUTRIENT	POUND	7
25000600	POTASSIUM FERTILIZER NUTRIENT	POUND	7
25100630	EROSION CONTROL BLANKET	SQ YD	360
40200800	AGGREGATE SURFACE COURSE, TYPE B	TON	15
40600100	BITUMINOUS MATERIALS (PRIME COAT)	GALLON	13158
40600300	AGGREGATE (PRIME COAT)	TON	249
40600400	MIXTURE FOR CRACKS, JOINTS, AND FLANGEWAYS	TON	19
40600525	LEVELING BINDER (HAND METHOD), N50	TON	31
40600625	LEVELING BINDER (MACHINE METHOD), N50	TON	2726
40600895	CONSTRUCTING TEST STRIP	EACH	1
40600982	HOT-MIX ASPHALT SURFACE REMOVAL - BUTT JOINT	SQ YD	1144
40600990	TEMPORARY RAMP	SQ YD	137
40603310	HOT-MIX ASPHALT SURFACE COURSE, MIX "C", N50	TON	5180
40800050	INCIDENTAL HOT-MIX ASPHALT SURFACING	TON	180
44000155	HOT-MIX ASPHALT SURFACE REMOVAL, 1 1/2"	SQ YD	1619
48101200	AGGREGATE SHOULDERS, TYPE B	TON	1816
48203100	HOT-MIX ASPHALT SHOULDERS	TON	18
66700095	PERMANENT SURVEY MARKERS	EACH	1
67100100	MOBILIZATION	L SUM	1
70100460	TRAFFIC CONTROL AND PROTECTION, STANDARD 701306	L SUM	1
70300100	SHORT-TERM PAVEMENT MARKING	FOOT	4270
70300220	TEMPORARY PAVEMENT MARKING - LINE 4"	FOOT	45305
70300240	TEMPORARY PAVEMENT MARKING - LINE 6"	FOOT	5193
70301000	WORK ZONE PAVEMENT MARKING REMOVAL	SQ FT	712
* 78001110	PAINT PAVEMENT MARKING - LINE 4"	FOOT	45305
* 78001130	PAINT PAVEMENT MARKING - LINE 6"	FOOT	5193
78100100	RAISED REFLECTIVE PAVEMENT MARKER	EACH	271
78300200	RAISED REFLECTIVE PAVEMENT MARKER REMOVAL	EACH	271

* SPECIALTY ITEMS

**SUMMARY OF
QUANTITIES**

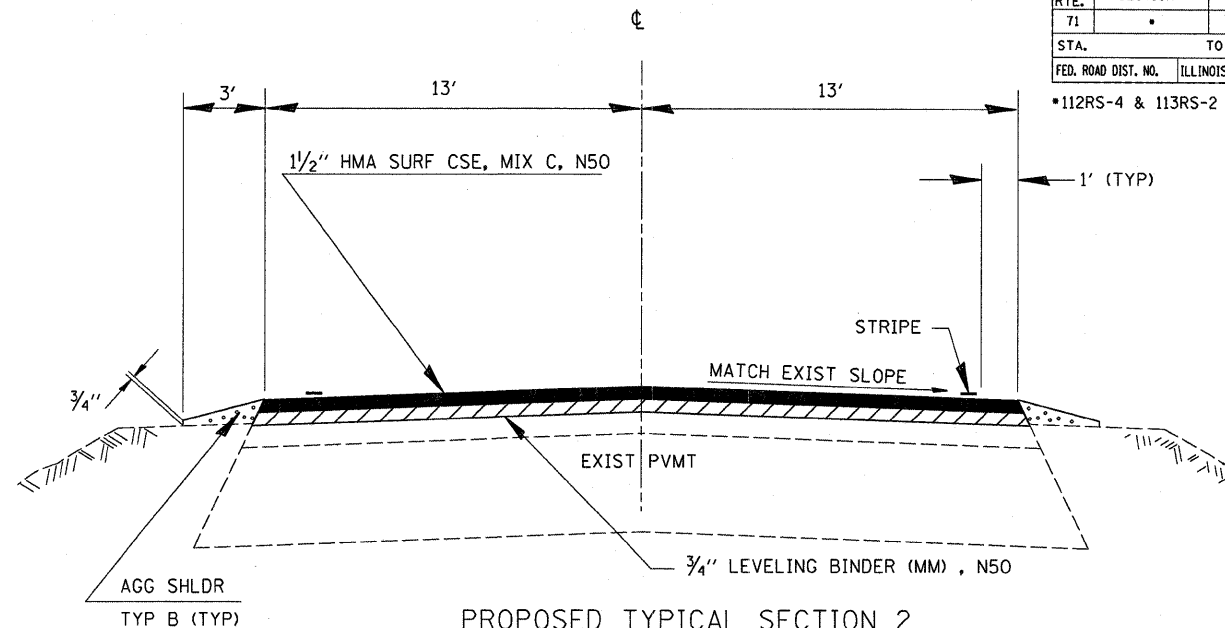
F.A.P. RTE.	SECTION	COUNTY	TOTAL SHEETS	SHEET NO.
71	*	IROQUOIS	9	4
STA.		TO STA.		
FED. ROAD DIST. NO.		ILLINOIS FED. AID PROJECT		

*112RS-4 & 113RS-2



PROPOSED TYPICAL SECTION 1

44+40 TO 45+30



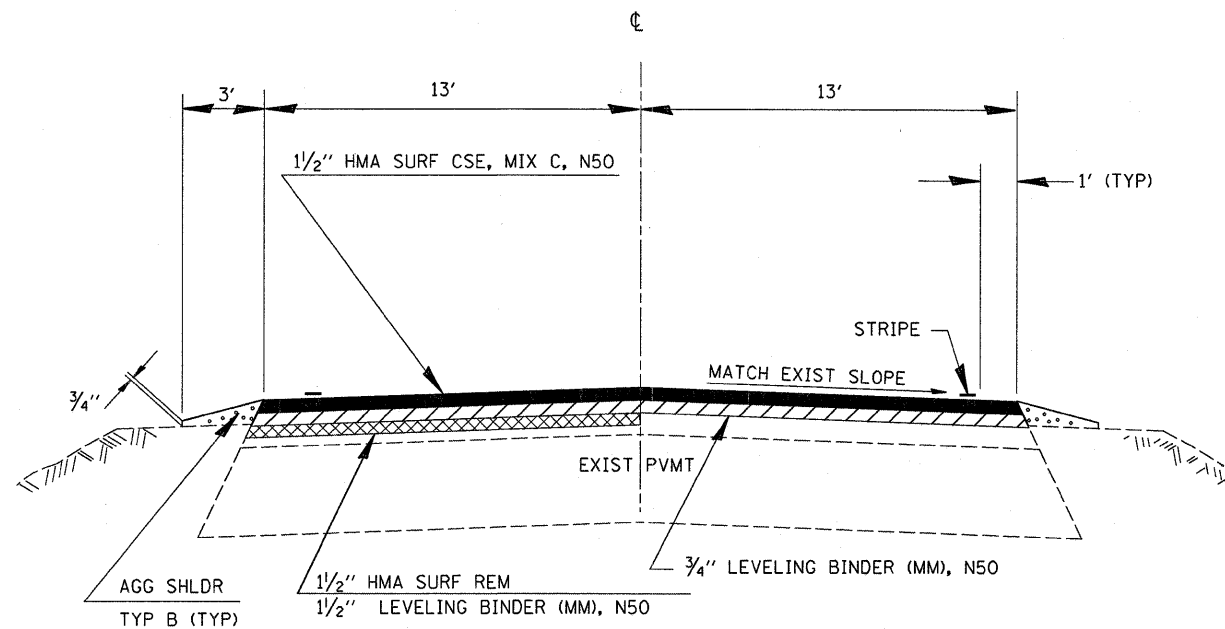
PROPOSED TYPICAL SECTION 2

45+30 TO 134+00
144+54 TO 195+96.5
197+87.5 TO 217+80
225+80 TO 267+40

MIX DESIGN						
MIX	PG GRADE	MAX % RAP ALLOWABLE	DESIGN AIR VOIDS	MIX COMPOSITION	FRICTION AGG	DENSITY CONTROL
HMA SURFACE COURSE	PG 64-22	15%	4.0% @N50	1L 12.5 OR 1L 9.5	MIXTURE C	CORRELATION
LEVELING BINDER	PG 64-22	25%	4.0% @N50	1L 9.5		SATISFACTION OF ENGINEER
HMA SHOULDERS	PG 58-22	50%	2.0% @N30	1L 19.0		• CORES

• MATERIAL SHALL BE COMPACTED TO 93-97 PERCENT OF THE MAXIMUM THEORETICAL DENSITY, EXCEPT THAT THE BOTTOM LIFT SHALL BE COMPACTED TO A MINIMUM OF 91.0 PERCENT. THE MAXIMUM THEORETICAL DENSITY SHALL BE DETERMINED FROM THE MOVING AVERAGE AS SPECIFIED IN THE QC/QA SPECIFICATION.

••WHEN MORE THAN 20% RAP IS USED, A SOFTER ASPHALT BINDER (PG58-22) MAY BE REQUIRED AS DETERMINED BY THE ENGINEER



PROPOSED TYPICAL SECTION 3

STA 134+00 TO STA 141+79.18 BK
STA 142+33.18 AH TO STA 144+54

BRIDGE OMISSIONS:
038-0207 STA 195+96.5 TO 197+87.5
038-0213 STA 217+80 TO 225+80
STATION EQUATION:
141+79.18 BK = 142+33.18 AH

TYPICALS

F.A.P. RTE.	SECTION	COUNTY	TOTAL SHEETS	SHEET NO.
71	*	IROQUOIS	9	5
STA.		TO STA.		
FED. ROAD DIST. NO.		ILLINOIS	FED. AID PROJECT	

*112RS-4 & 113RS-2

RESURFACING SCHEDULE														
LOCATION		LENGTH	RESURF AREA	HMA SURF CSE	LEVEL BINDER	HMA SURF REM 1-1/2"	HMA SURF REM (BUTT JT)	TEMP RAMP	BIT MAT (PR CT)	AGG (PR CT)	MIX FOR CRACKS JTS & FLGWYS	LEVEL BINDER (HM)	HMA SHLD	AGG SHLD
STA TO STA		FOOT	SQ YD	TON	TON	SQ YD	SQ YD	SQ YD	GALLON	TON	TON	TON	TON	TON
44+40 TO 45+30	BUTT JOINT	90	260.0	21.8	10.9		266.7	22.2	55	1.0	0.1	0.1	17.6	
45+30 TO 133+40		8810	25451.1	2137.9	1068.9				5345	101.8	7.6	12.7		752.5
133+40 TO 134+00	MILLING TAPER	60	173.3	14.6	14.6	87			36	0.7	0.1	0.1		5.1
134+00 TO 141+79.18 BK	MILL EB LANE	779.18	2251.0	189.1	189.1	1126			473	9.0	0.7	1.1		66.6
142+33.18 AH TO 144+54	MILL EB LANE	220.82	637.9	53.6	53.6	319			134	2.6	0.2	0.3		18.9
144+54 TO 145+14	MILLING TAPER	60	173.3	14.6	14.6	87			36	0.7	0.1	0.1		5.1
145+14 TO 195+06.5		4992.5	14422.8	1211.5	605.8				3029	57.7	4.3	7.2		426.4
195+06.5 TO 195+96.5	BUTT JOINT	90	260.0	21.8	10.9		173.3	14.4	55	1.0	0.1	0.1		7.7
195+96.5 TO 197+87.5	OMIT SN 038-0207													
197+87.5 TO 198+77.5	BUTT JOINT	90	260.0	21.8	10.9		173.3	14.4	55	1.0	0.1	0.1		7.7
198+77.5 TO 216+90		1812.5	5236.1	439.8	219.9				1100	20.9	1.6	2.6		154.8
216+90 TO 217+80	BUTT JOINT	90	260.0	21.8	10.9		173.3	14.4	55	1.0	0.1	0.1		7.7
217+80 TO 225+80	OMIT SN 038-0213													
225+80 TO 226+70	BUTT JOINT	90	260.0	21.8	10.9		173.3	14.4	55	1.0	0.1	0.1		7.7
226+70 TO 267+40		4070	11757.8	987.7	493.8				2469	47.0	3.5	5.9		347.6
267+40 TO 268+30	BUTT JOINT	90	260.0	21.8	10.9			14.4	55	1.0	0.1	0.1		7.7
TOTAL				5179.6	2725.7	1619	959.9	94.2	12952	246.4	18.7	30.6	17.6	1815.5

SIDEROAD AND ENTRANCE SCHEDULE											
SIDEROAD OR DESCRIPTION	STA	SIDE	EXIST MAT	WIDTH	AREA	INC HMA SURF	BIT MAT'L (PR CT)	AGG (PR CT)	TEMP RAMP	HMA SURF REM BUTT JT	AGG SURF TY B
				FOOT	SQ YD	TON	GAL	TON	SQ YD	SQ YD	TON
PE	70+00	RT	AGG	22	36	4.5	13.5	0.1			1.6
PE W/ MBTO	70+80	RT	BIT/AGG	25	98	12.3	7.8	0.2			1.8
MBTO	75+00	RT	BIT	23	43	5.4	3.4	0.1			
PE	75+27	LT	AGG	13	26	3.3	9.8	0.1			0.9
400 E RD	79+83	RT	AGG	20	110	13.9	41.3	0.2			2.8
MBTO	85+36	RT	BIT	48	66	8.3	5.3	0.1			
PE	85+36	LT	AGG	22	36	4.5	13.5	0.1			1.6
MBTO	90+00	RT	BIT	28	53	6.7	4.2	0.1			
PE	90+00	LT	AGG	22	36	4.5	13.5	0.1			1.6
PE W/ MBTO	95+00	RT	BIT	28	76	9.6	6.1	0.2		12.4	
PE	96+60	LT	AGG	22	36	4.5	13.5	0.1			1.6
MBTO	96+60	RT	BIT	33	54	6.8	4.3	0.1			
PE W/ MBTO	128+80	RT	BIT/AGG	23	92	11.6	7.4	0.2			1.6
PE	131+20	RT	AGG	17	30	3.8	11.3	0.1			1.2
300 E RD	133+53	LT	BIT	23	120	15.1	9.6	0.2	12.8	51.1	
300 E RD	134+00	RT	BIT	54	223	28.1	17.8	0.4	30.0	120.0	
200 E RD	205+40	RT	A3	34	156	19.7	12.5	0.3			
200 E RD	205+80	LT	A3	29	140	17.6	11.2	0.3			
TOTAL						180.2	206.0	3.0	42.8	183.5	14.7

SCHEDULES

F.A.P. RTE.	SECTION	COUNTY	TOTAL SHEETS	SHEET NO.
71	*	IROQUOIS	9	6
STA.		TO STA.		
FED. ROAD DIST. NO.		ILLINOIS	FED. AID PROJECT	

*112RS-4 & 113RS-2

LOCATION	SIDE	LENGTH	SEEDING	FURN	EROSION	NIT	PHOS	POT
			CL 2	EXC	CONTROL	FERT	FERT	FERT
			ACRE	CU YD	SQ YD	LB	LB	LB
44+40 TO 45+30	RT	90	0.01	1.6	50	1	1	1
44+40 TO 45+30	LT	90	0.01	1.6	50	1	1	1
400 E RD	RT		0.011	1.5	52	1	1	1
300 E RD	LT		0.011	1.5	52	1	1	1
300 E RD	RT		0.011	1.5	52	1	1	1
200 E RD	LT		0.011	1.5	52	1	1	1
200 E RD	RT		0.011	1.5	52	1	1	1
			0.075	10.7	360	7	7	7

LOCATION	LENGTH	PAINT PVMT MARK LINE - 4"		PAINT PVMT MARK LINE - 6"	RAISED REFLECT PVMT MARK REM	RAISED REFLECT PVMT MARKER
		WHITE	YELLOW	YELLOW	EACH	EACH
		FOOT	FOOT	FOOT		
44+40 TO 141+79.18 BK	9739.18	19478	2615	2291	123	123
142+33.18 AH TO 195+96.5	5363.32	10727		1341	68	68
195+96.5 TO 197+87.5 (OMIT SN 038-0207)						
197+87.5 TO 217+80	1992.5	3985		498	26	26
217+80 TO 225+80 (OMIT SN 038-0213)						
225+80 TO 268+30	4250	8500		1063	54	54
TOTAL		42690	2615	5193	271	271

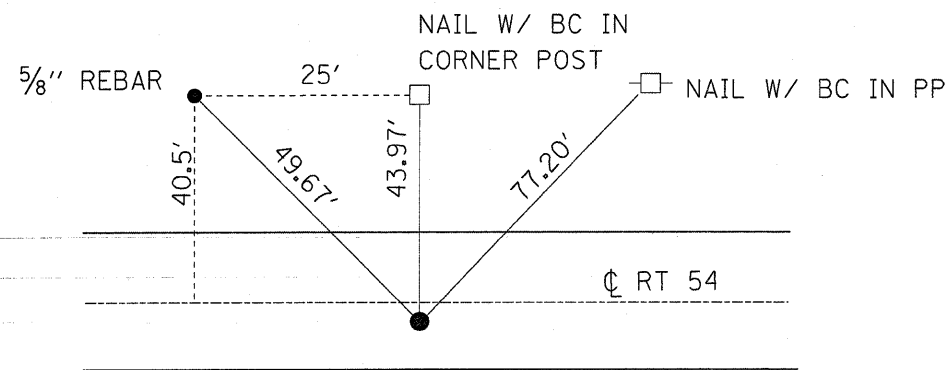
NOTE: NO PASSING ZONES SHALL BE REPLACED

LOCATION	LENGTH	TEMPORARY PAVEMENT MARKING LINE - 4"		TEMP PVMT MARK LINE - 6"	SHORT TERM PVMT MARK	WORK ZONE PVMT MARK
		WHITE	YELLOW	YELLOW	FOOT	REM
		FOOT	FOOT	FOOT		SQ FT
44+40 TO 141+79.18 BK	9739.18	19478	2615	2291	1948	325
142+33.18 AH TO 195+96.5	5363.32	10727		1341	1073	179
195+96.5 TO 197+87.5 (OMIT SN 038-0207)						
197+87.5 TO 217+80	1992.5	3985		498	399	66
217+80 TO 225+80 (OMIT SN 038-0213)						
225+80 TO 268+30	4250	8500		1063	850	142
TOTAL		42690	2615	5193	4270	712

SCHEDULES

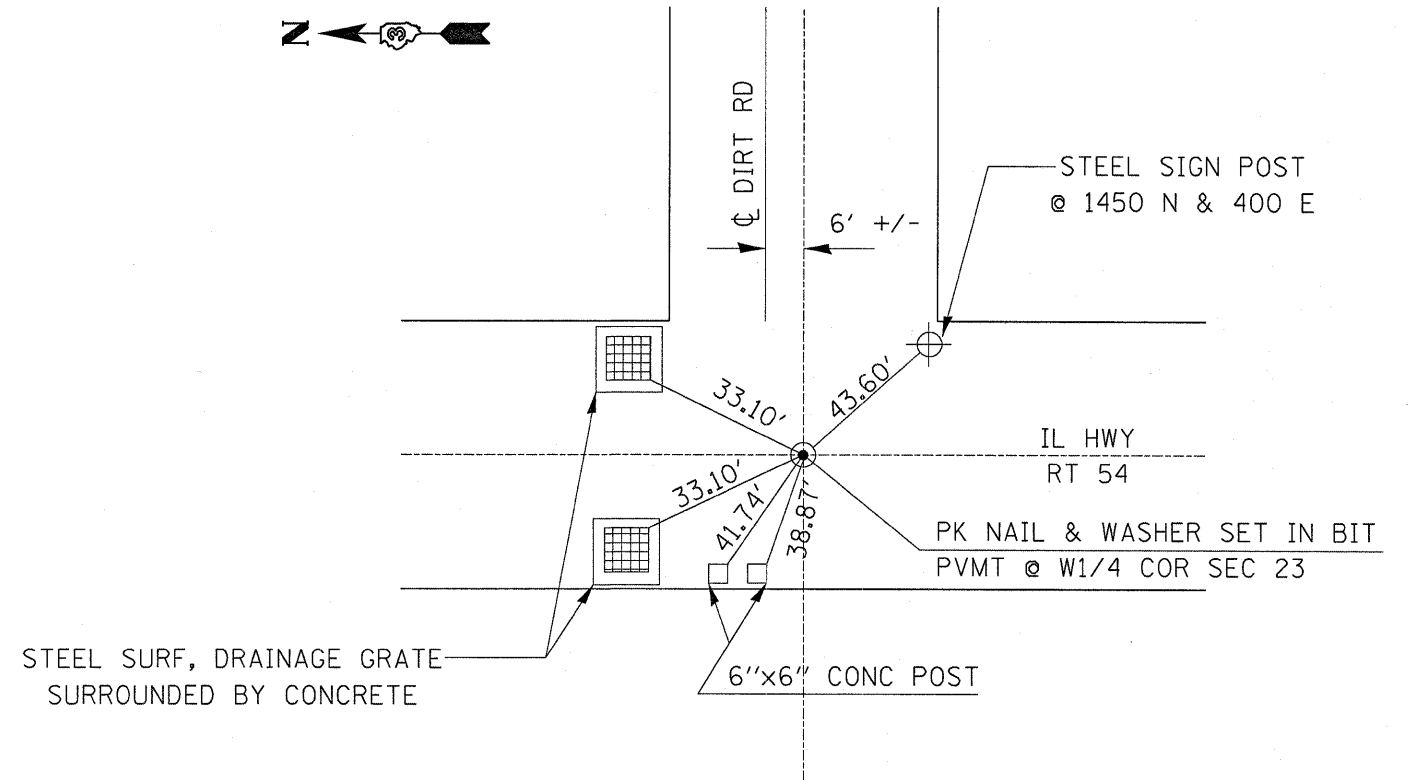
F.A.P. RTE.	SECTION	COUNTY	TOTAL SHEETS	SHEET NO.
71	*	IROQUOIS	9	7
STA.		TO STA.		
FED. ROAD DIST. NO.		ILLINOIS	FED. AID PROJECT	

*112RS-4 & 113RS-2



CENTER OF SEC 22 T26N - 10E

NON VERIFIED MONUMENT RECORD IN IROQUOIS CO
MAG NAIL & WASHER +/- 2.5' SOUTH OF C RT 54
REPLACE LIKE FOR LIKE



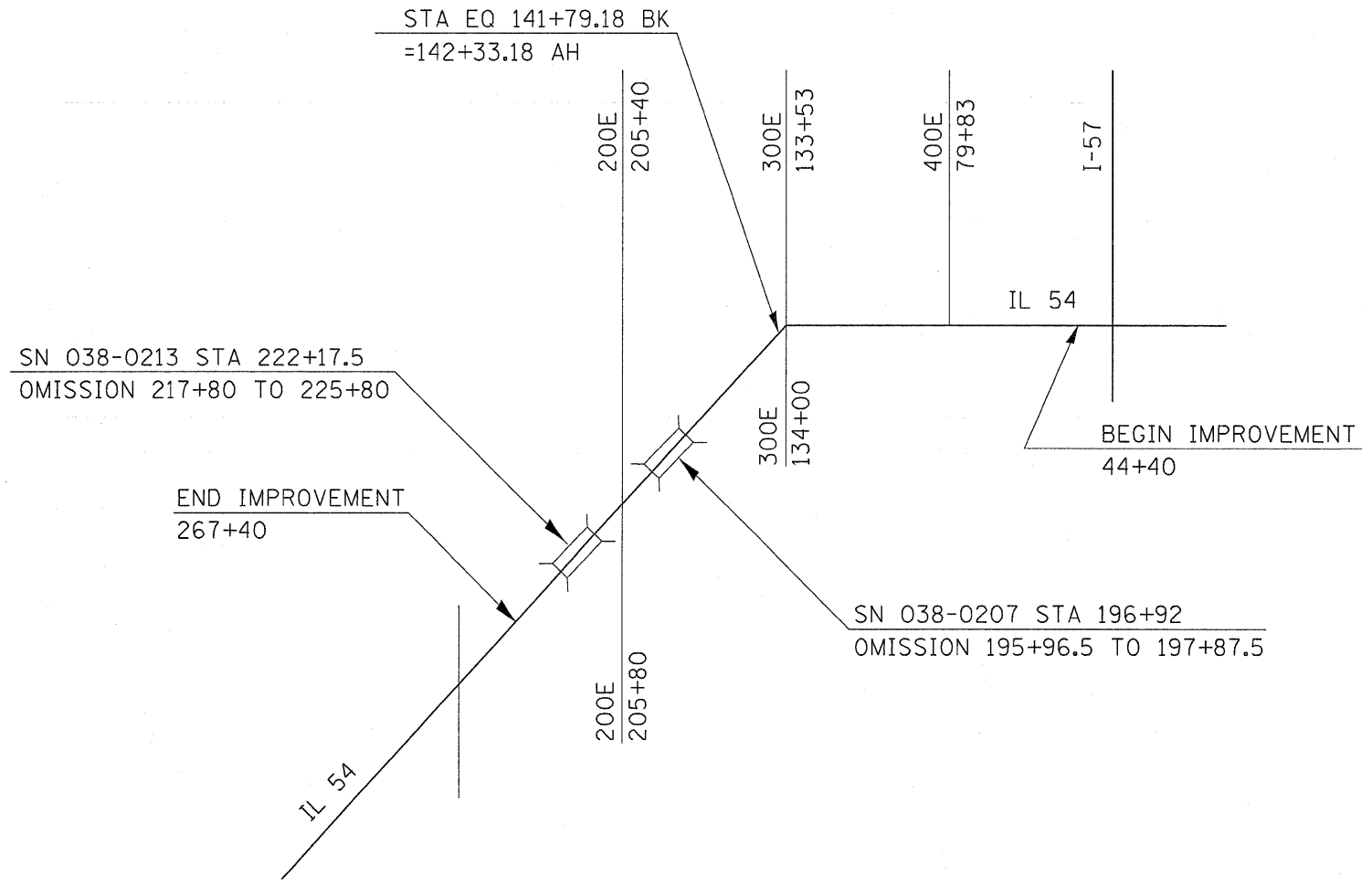
SEC 23 T26N - 10E - 3RD PM

VERIFIED MONUMENT RECORD IN IROQUOIS CO
RECORD NO 97R0707
MAG NAIL & WAHER +/- .80' NORTH OF C RT 54
REPLACE WITH BRASS PLAQUE
PERMANENT SURVEY MARKER, TY 1

TIE POINTS

F.A.P. RTE.	SECTION	COUNTY	TOTAL SHEETS	SHEET NO.
71	*	IROQUOIS	9	8
STA.		TO STA.		
FED. ROAD DIST. NO.		ILLINOIS FED. AID PROJECT		

*112RS-4 & 113RS-2

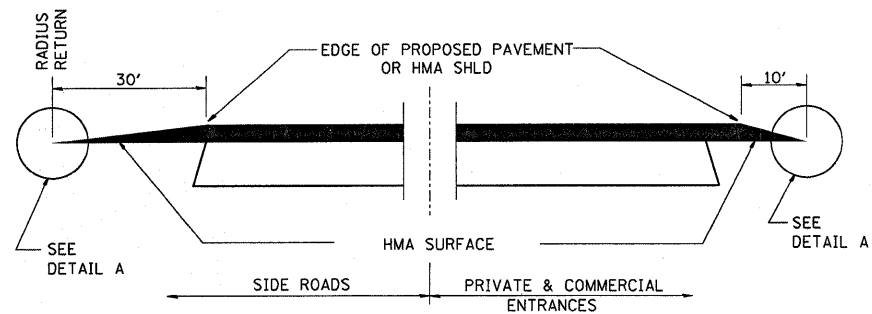


DATE-TIME
C:\pw-wor\K\PW\DOT\CARPENTERD\J\dms84136\ALLSHTS.DGN

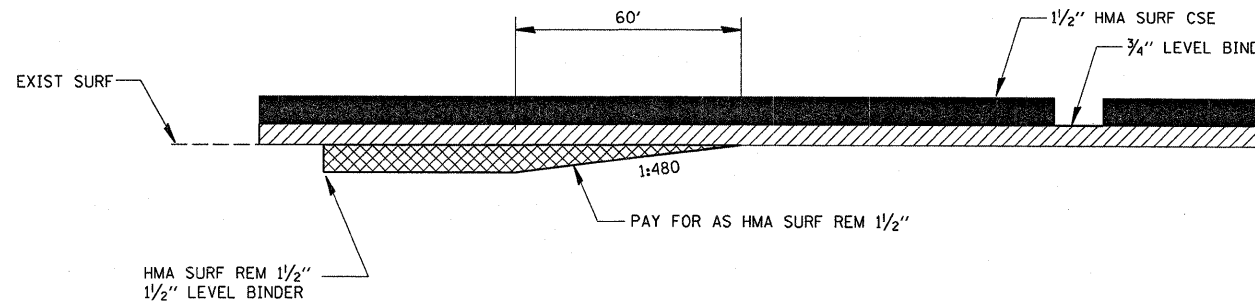
PROJECT LAYOUT

F.A.P. RTE.	SECTION	COUNTY	TOTAL SHEETS	SHEET NO.
71	*	IROQUOIS	9	9
STA.		TO STA.		
FED. ROAD DIST. NO.		ILLINOIS FED. AID PROJECT		

*112RS-4 & 113RS-2



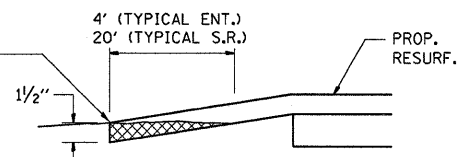
SECTION A-A
DETAILS AT ENTRANCES & SIDE ROADS



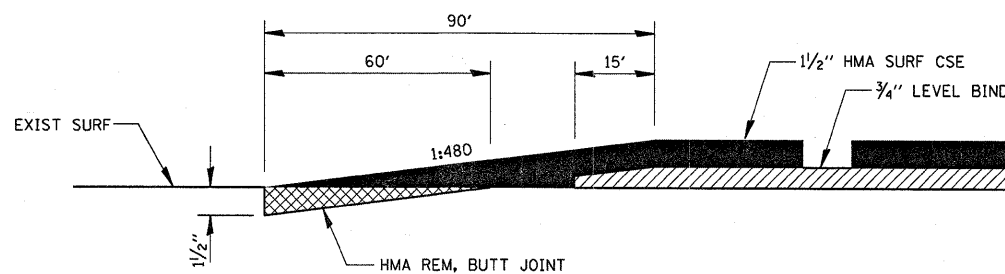
HMA TAPER

133+40 TO 134+00 EB
144+54 TO 145+14 EB

THE COST OF REMOVAL AT EXISTING HMA OR P.C.C. LOCATIONS SHALL BE PAID FOR PER SQ YD BY THE APPROPRIATE PAY ITEM. REMOVAL AT EXISTING AGG. LOCATIONS SHALL BE INCIDENTAL TO THE HMA. A-3 LOCATIONS SHALL BE FEATHER TAPERED.

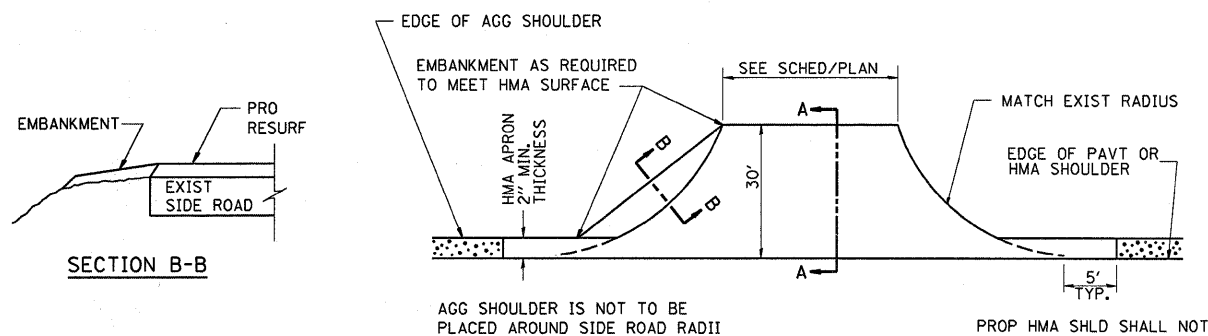


DETAIL A

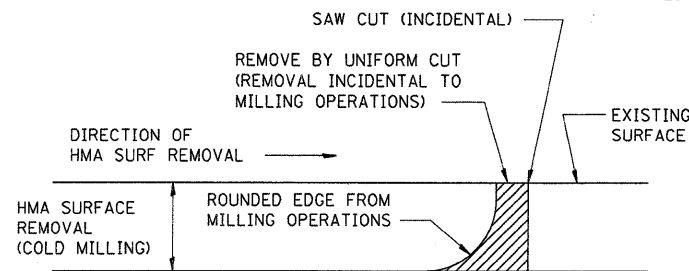


HMA REM-BUTT JOINT

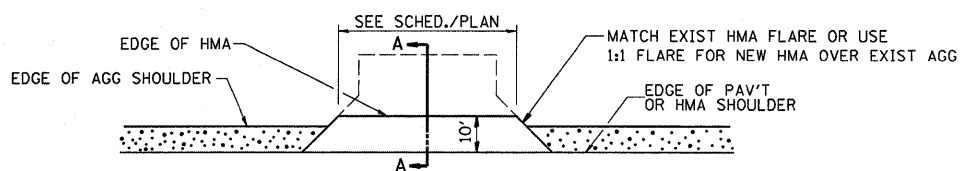
44+40 TO 45+30
195+40.58 TO 196+30.58
197+11.96 TO 198+01.96
216+90 TO 217+80
225+80 TO 226+70
267+40 TO 268+30



PLAN AT SIDE ROADS



NOTE: WHEN MILLING OPERATIONS PRODUCE A ROUNDED EDGE, THEN A SAW CUT SHALL BE USED TO MANUFACTURE A PERPENDICULAR EDGE AS SHOWN IN THE DETAIL. THE ENGINEER SHALL BE THE SOLE JUDGE CONCERNING THE USE OF THIS DETAIL.



PLAN AT PRIVATE & COMMERCIAL ENTRANCES

(DO NOT RESURFACE FIELD ENTRANCES)

DETAILS

HMA DETAIL AT BUTT JOINTS