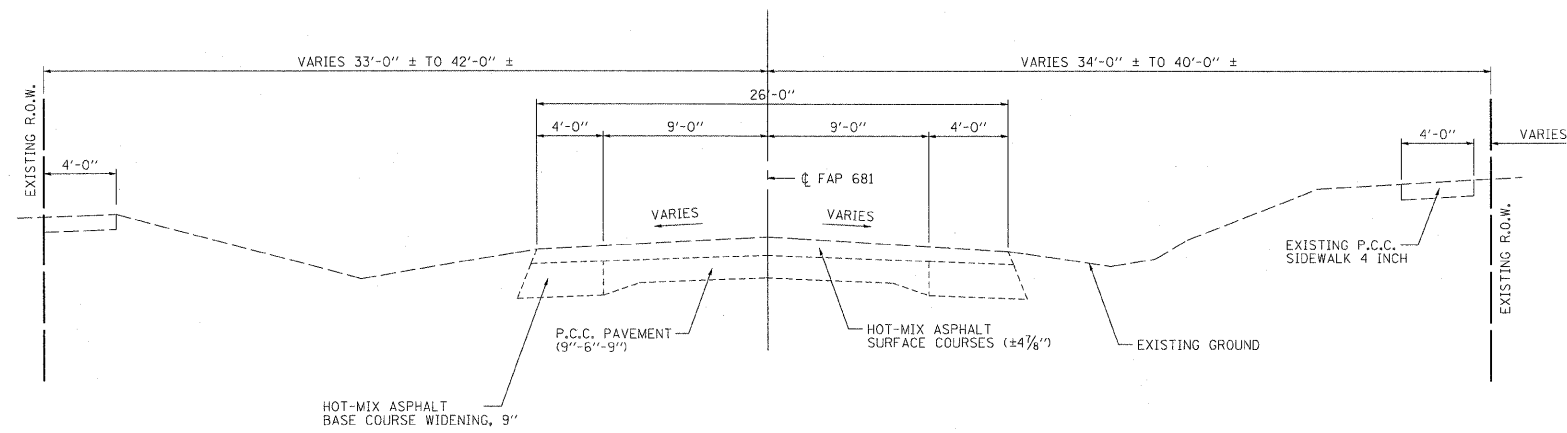


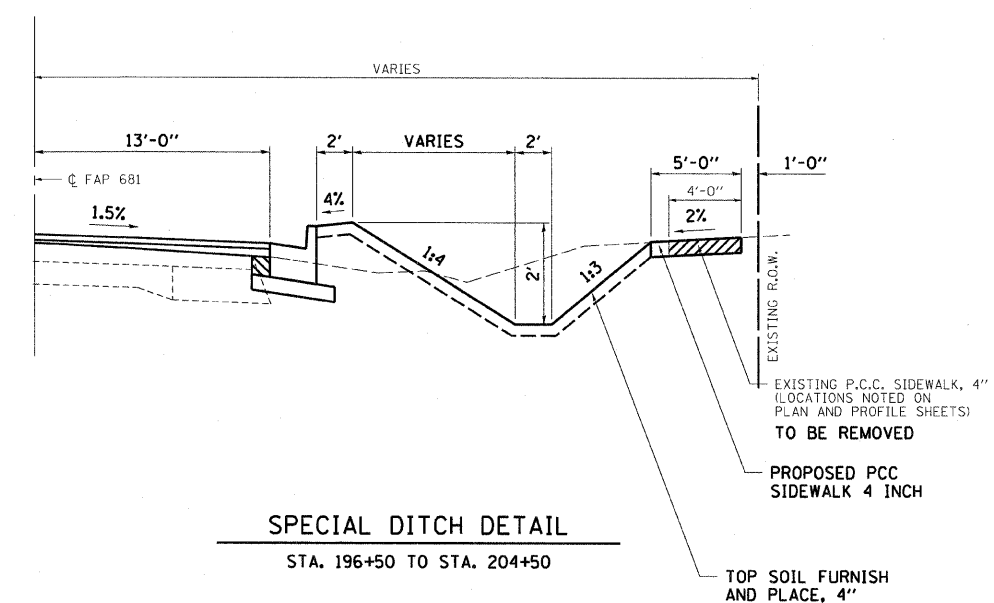
DESIGN		
INT.	DATE	REASON

F.A.P. RTE.	SECTION	COUNTY	TOTAL SHEETS	SHEET NO.
681	(115)RS-1	LIVINGSTON	279	11
STA.		TO STA.		
FED. ROAD DIST. NO.	ILLINOIS	FED. AID PROJECT		

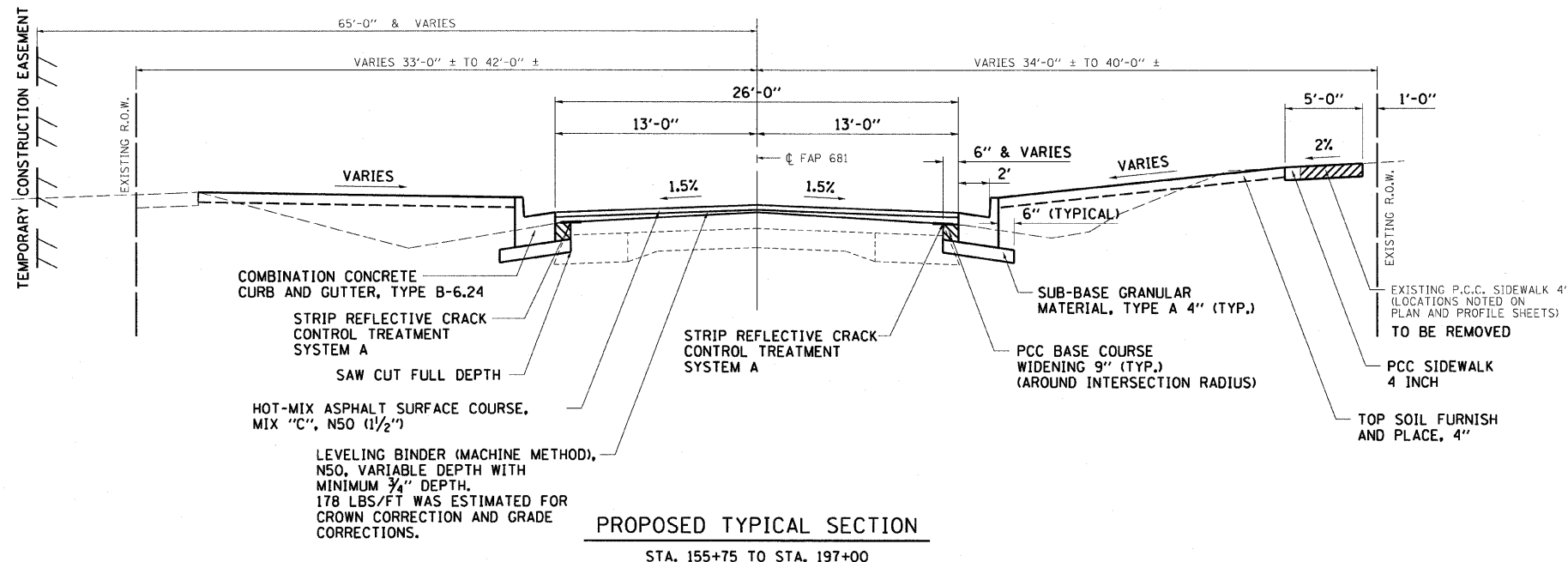
CONTRACT NO. 66375



EXISTING TYPICAL SECTION
STA. 155+75 TO STA. 197+00



SPECIAL DITCH DETAIL
STA. 196+50 TO STA. 204+50



PROPOSED TYPICAL SECTION
STA. 155+75 TO STA. 197+00

PLOTS & CHECKS		
INT.	DATE	REASON

CHECKS		
INT.	DATE	REASON

ILLINOIS DEPARTMENT OF TRANSPORTATION

TYPICAL SECTIONS

FAP 681 (IL RTE. 116)
SECTION (115)RS-1
LIVINGSTON COUNTY
VILLAGE OF CULLOM

SCALE: VERT. 1"=10'
HORIZ. 1"=40'

DATE: 11/05/03

DRAWN BY: JAMESON
DESIGNED BY: BOTT
CHECKED BY: COLBROOK

COMPUTER FILE NO. TYPICALSP2-2
PROJECT 03145
09/05/07-WCB

GREENE & BRADFORD, INC.
OF SPRINGFIELD

REVISIONS

NAME	DATE
IDOT REVIEW-WCB	10/08