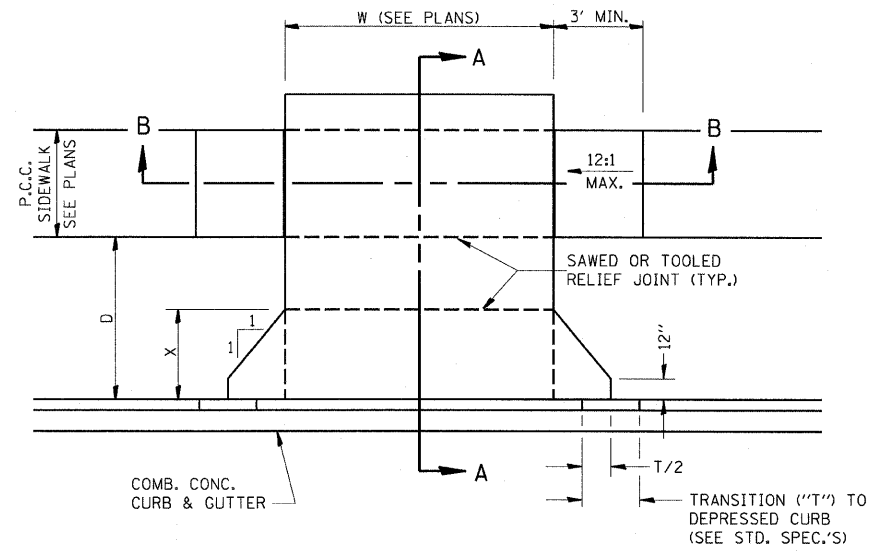
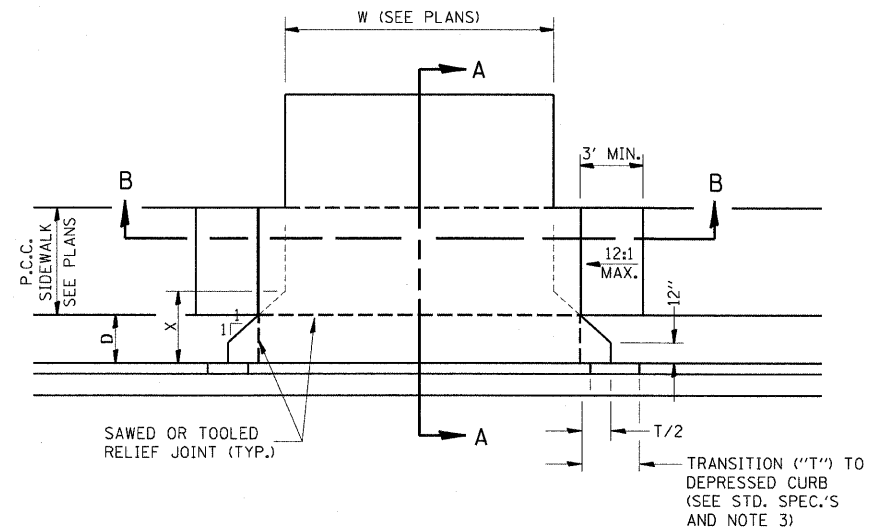


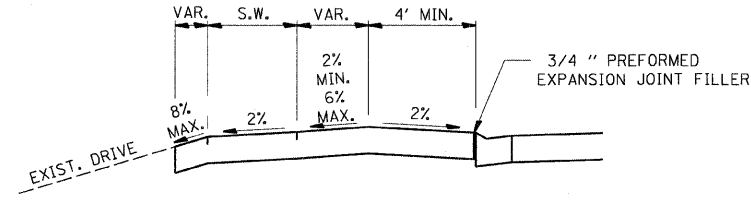
F.A.P. RTE.	SECTION	COUNTY	TOTAL SHEETS	SHEET NO.
681	(115)RS-1	LIVINGSTON	279	131
STA.		TO STA.		
FED. ROAD DIST. NO.	ILLINOIS	FED. AID PROJECT		
CONTRACT NO. 66375				



CASE I (D ≥ X)

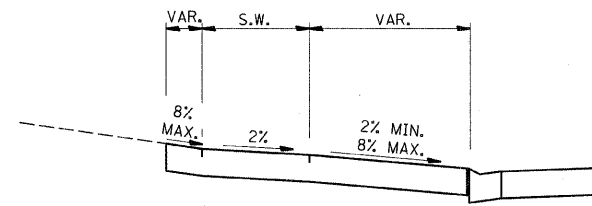


CASE I (D < X)

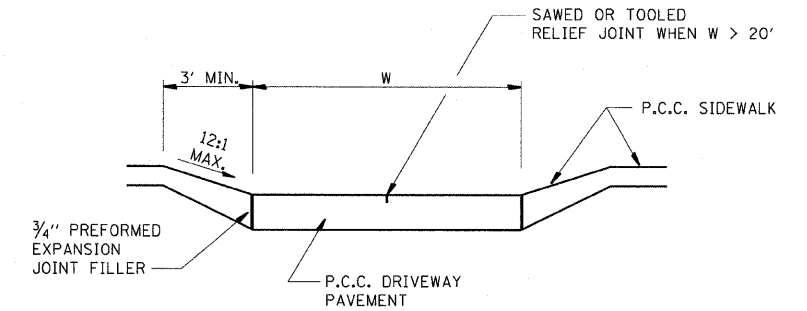


DEPRESSED ENTRANCE *
SECTION A-A

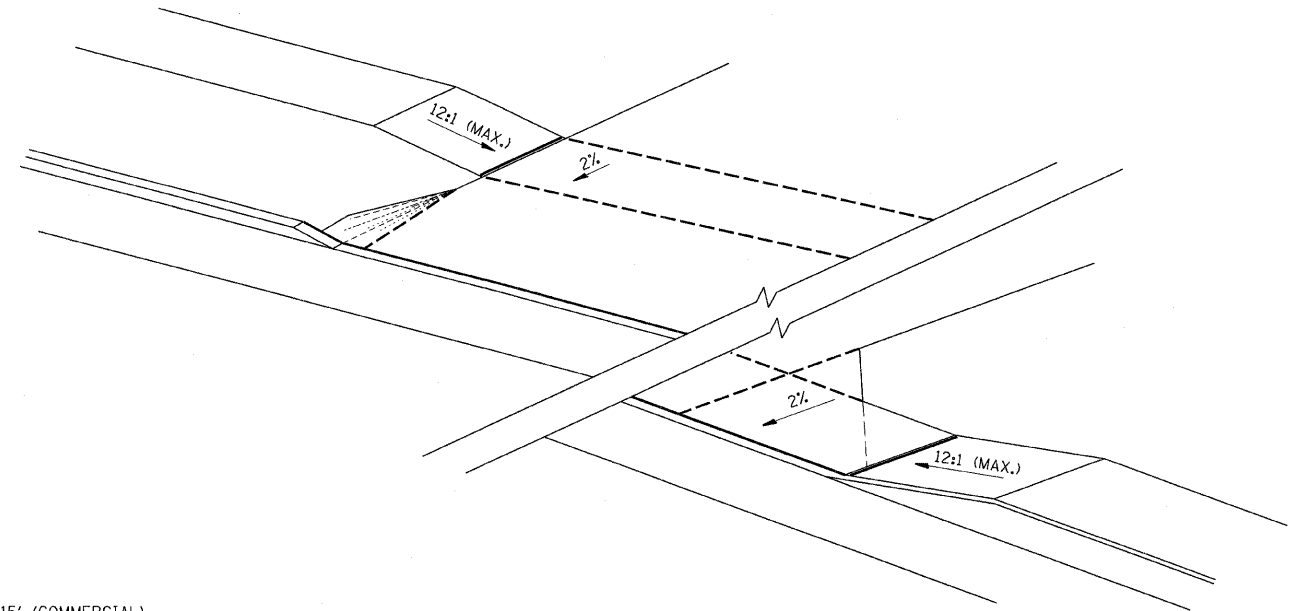
*(SEE X-SECTIONS FOR ENTRANCE PROFILE.)



ELEVATED ENTRANCE *
SECTION A-A



SECTION B-B



GENERAL NOTES:

- X = 7' (NON-COMMERCIAL) X = 15' (COMMERCIAL)
- COST OF EXPANSION JOINTS AND RELIEF JOINTS SHALL BE INCLUDED IN THE COST OF THE P.C.C. DRIVEWAY PAVEMENT.
- AS THE DIMENSION "D" APPROACHES ZERO, THE TRANSITION TO DEPRESSED CURB SHALL BE NO STEEPER THAN 12:1

PCC URBAN ENTRANCES

423-1

ILLINOIS DEPARTMENT OF TRANSPORTATION
DISTRICT 3 STANDARDS
FAP 681 (IL RTE. 116)
SECTION (115)RS-1
LIVINGSTON COUNTY
VILLAGE OF CULLOM

REVISIONS	
NAME	DATE

SCALE: VERT. DATE: 11/07/03
DRAWN BY: BISHOP
DESIGNED BY: BOTT
CHECKED BY: COLBROOK

GREENE & BRADFORD, INC.
CONSULTING ENGINEERS
3005 CONSTITUTION DRIVE
SPRINGFIELD, ILLINOIS 62707
COMPUTER FILE NO. STANDARDS-B
PROJECT: 03145
09/05/07-WCB