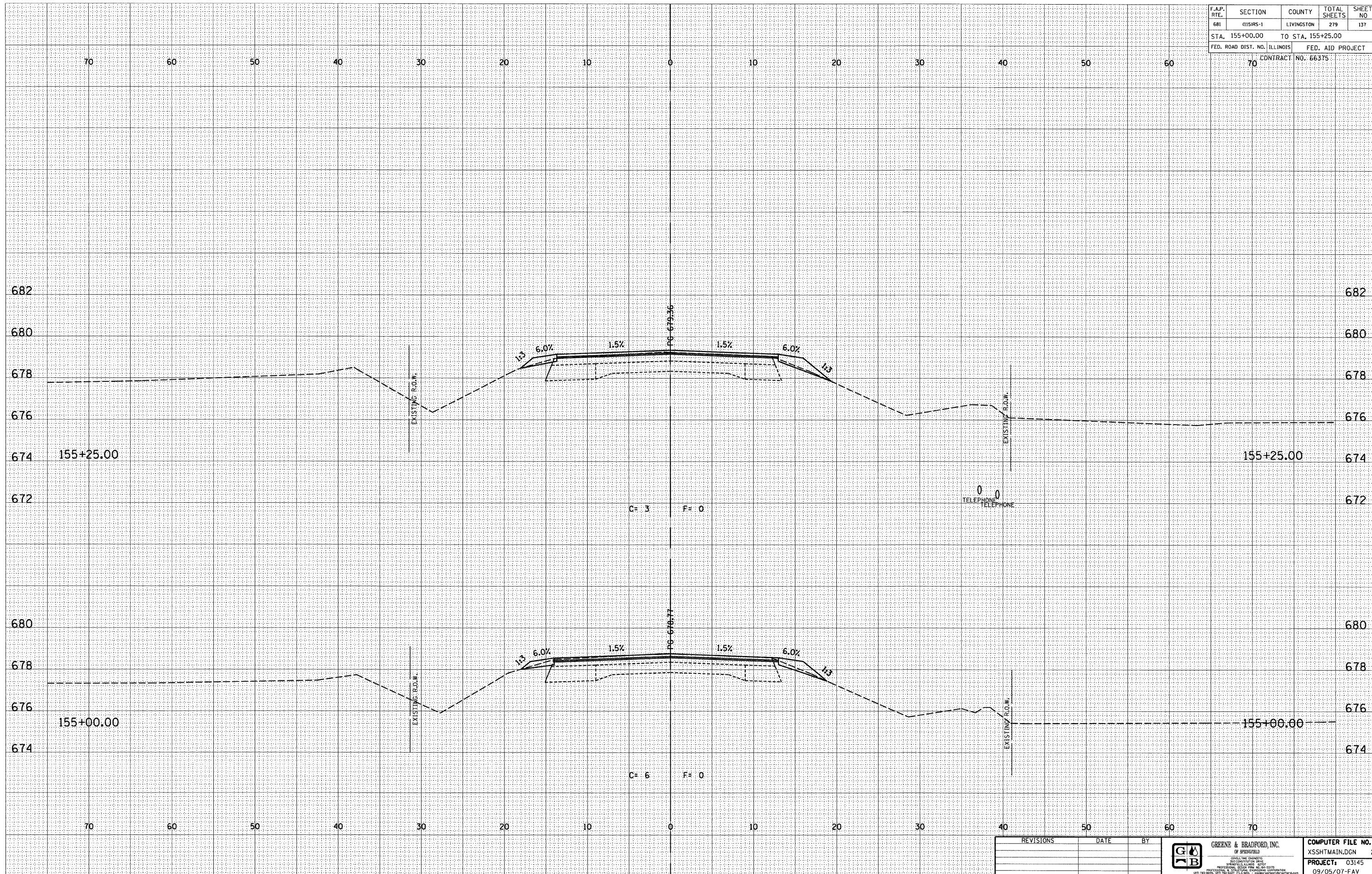


F.A.P. RTE.	SECTION	COUNTY	TOTAL SHEETS	SHEET NO
681	015RS-1	LIVINGSTON	279	137
STA. 155+00.00		TO STA. 155+25.00		
FED. ROAD DIST. NO. ILLINOIS		FED. AID PROJECT		
70		CONTRACT NO. 66375		



DESIGN		
INT.	DATE	REASON

BY	DATE

PLOTS & CHECKS			
INT.	DATE	NO.	REASON

BY	DATE

CHECKS		
INT.	DATE	REASON

REVISIONS	DATE	BY

GREENE & BRADFORD, INC. OF SPRINGFIELD ENGINEERS, ARCHITECTS & SURVEYORS 1001 S. WASHINGTON ST. SPRINGFIELD, ILLINOIS 62767 TEL: 217-223-8800 FAX: 217-223-8801 WWW.GREENE-AND-BRADFORD.COM	COMPUTER FILE NO. XSSHTMAIN.DGN 2 PROJECT: 03145 09/05/07-FAV
---	--

E-XSEC 2:1 06/09/03

CROSS SECTIONS - FAP 681 (IL RTE. 116) LIVINGSTON COUNTY
STA. 155+00.00 TO STA. 155+25.00