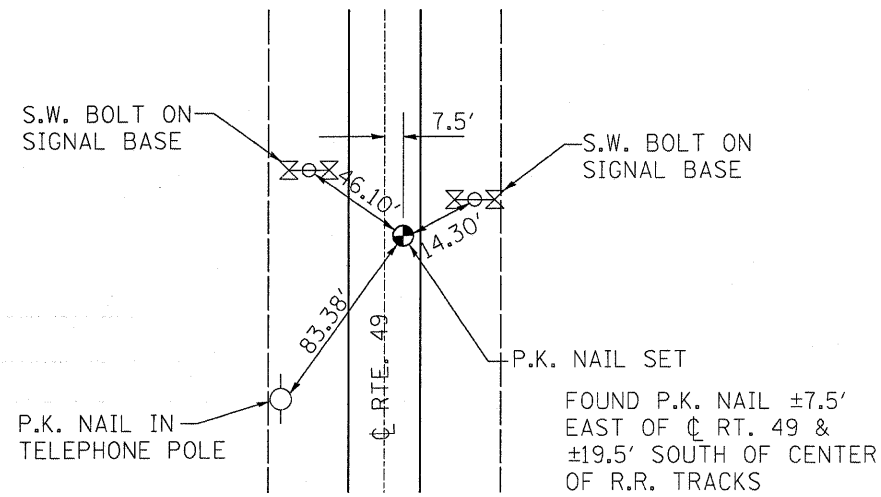
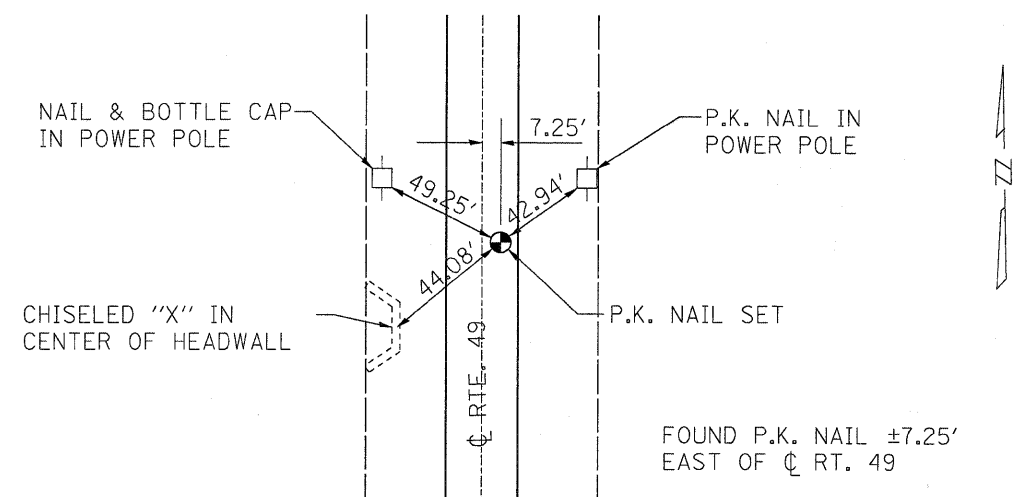


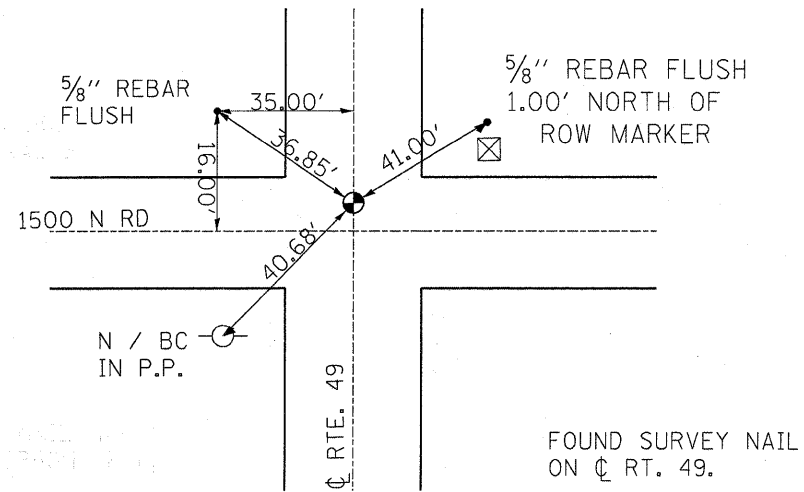
F.A.P. RTE.	SECTION	COUNTY	TOTAL SHEETS	SHEET NO.
840	*	ILLINOIS	14	9
STA.		TO STA.		
FED. ROAD DIST. NO.		ILLINOIS FED. AID PROJECT		
*(135)RS-3 & (136)RS-2				



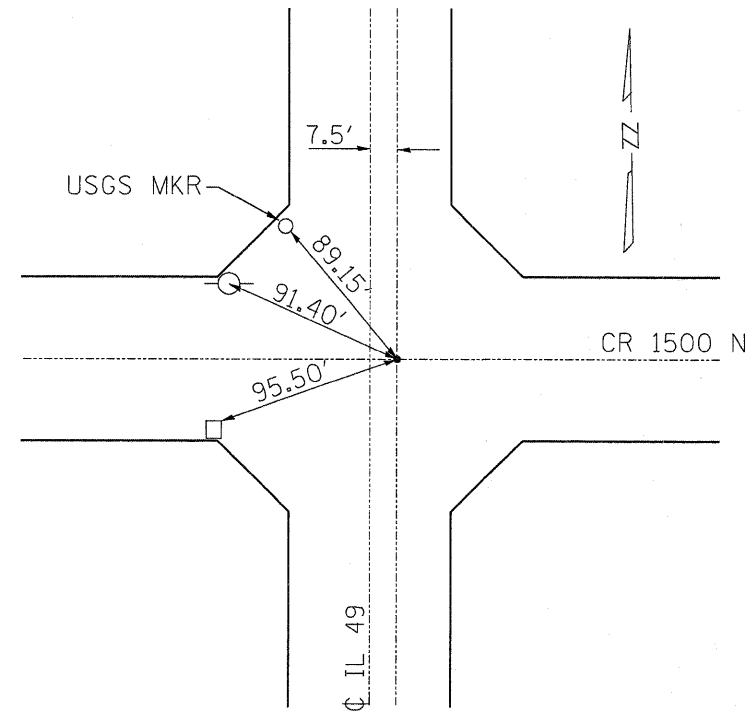
PK NAIL
N.E. CORNER SEC. 6, T.26N., R.13W., OF 2ND P.M.
REPLACE WITH PERMANENT SURVEY MARKER



PK NAIL
S.E. CORNER SEC. 6, T.26N., R.13W., OF 2ND P.M.
REPLACE WITH PERMANENT SURVEY MARKER



S.E. CORNER SEC. 18, T.25N., R.13W., OF 2ND P.M.
REPLACE WITH PERMANENT SURVEY MARKER



PK NAIL
SEC 20 T26N-R 13W
REPLACE WITH PERMANENT SURVEY MARKER

TIE POINTS