

F.A.I. RTE.	SECTION	COUNTY	TOTAL SHEETS	SHEET NO.
80	32-2RS-4	GRUNDY	8	1
		ILLINOIS	CONTRACT NO. 66906	

INDEX OF SHEETS

- 1 COVER SHEET
- 2 GENERAL NOTES AND DETAILS
- 3 SUMMARY OF QUANTITIES
- 4-5 SCHEDULES
- 6 TYPICAL SECTIONS
- 7 PROJECT LAYOUT PLAN VIEW
- 8 PATCHING DETAIL

STANDARDS

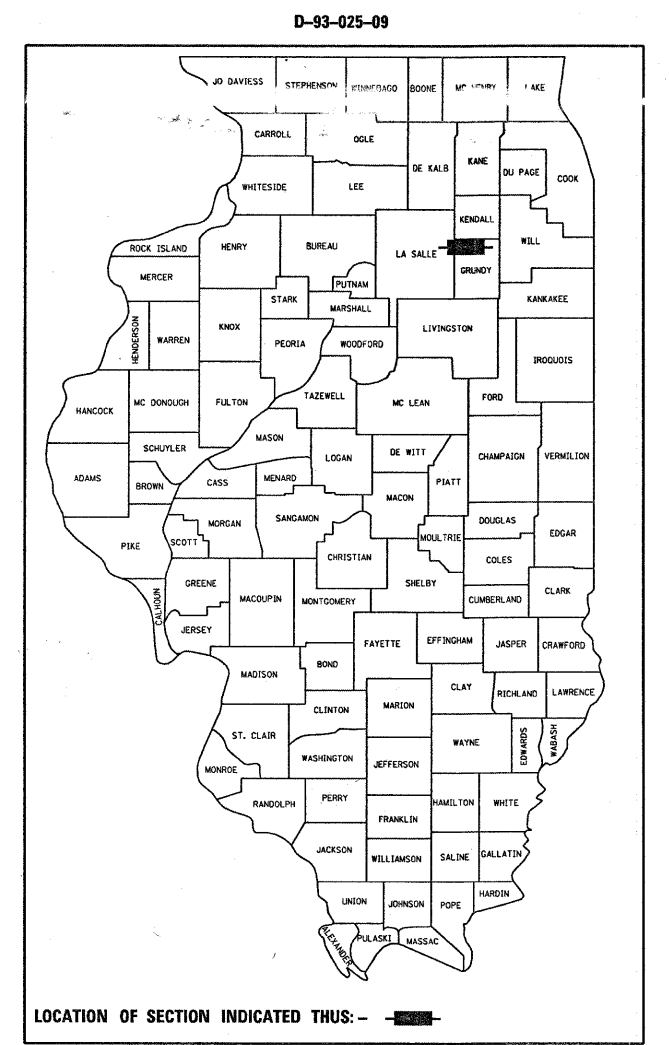
- 000001-05 STANDARD SYMBOLS, ABBREVIATIONS AND PATTERNS
- 442001-04 CLASS A PATCHES
- 701101-02 OFF-ROAD OPERATIONS MULTILANE, 15' (4.5 m) TO 24" (600 mm) FROM PAVEMENT EDGE
- 701400-03 APPROACH TO LANE CLOSURE, FREEWAY/EXPRESSWAY
- 701401-05 LANE CLOSURE, FREEWAY/EXPRESSWAY
- 701411-05 LANE CLOSURE, MULTILANE, AT ENTRANCE OR EXIT RAMP FOR SPEEDS ≥ 45 MPH
- 701426-03 LANE CLOSURE, MULTILANE INTERMITTENT OR MOVING OPERATION, FOR SPEEDS ≥ 45 MPH
- 701901-01 TRAFFIC CONTROL DEVICES

STATE OF ILLINOIS
DEPARTMENT OF TRANSPORTATION
DIVISION OF HIGHWAYS

**PROPOSED
HIGHWAY PLANS**

FAI ROUTE 80 (I-80)
SECTION (32-2)RS-4
PROJECT ESP-080-3(131)105
ULTRA-THIN BONDED WEARING COURSE (NOVA CHIP)
GRUNDY COUNTY

C-93-048-09



FUNCTIONAL CLASSIFICATION
INTERSTATE
2008 ADT = 30300
P.V. = 58.8% S.U. = 6.5% M.U. = 34.7%

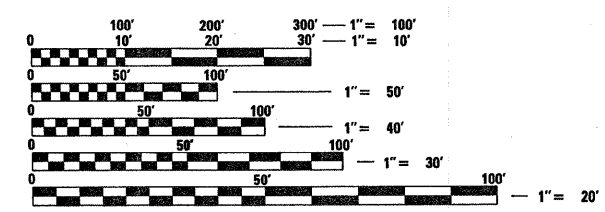
STATE OF ILLINOIS
DEPARTMENT OF TRANSPORTATION
DIVISION OF HIGHWAYS

SUBMITTED 2/13 2009

Marg. F. Ryan
DEPUTY DIRECTOR OF HIGHWAYS, REGION ENGINEER

March 13, 2009
Charles J. Ingersoll
ENGINEER OF DESIGN AND ENVIRONMENT

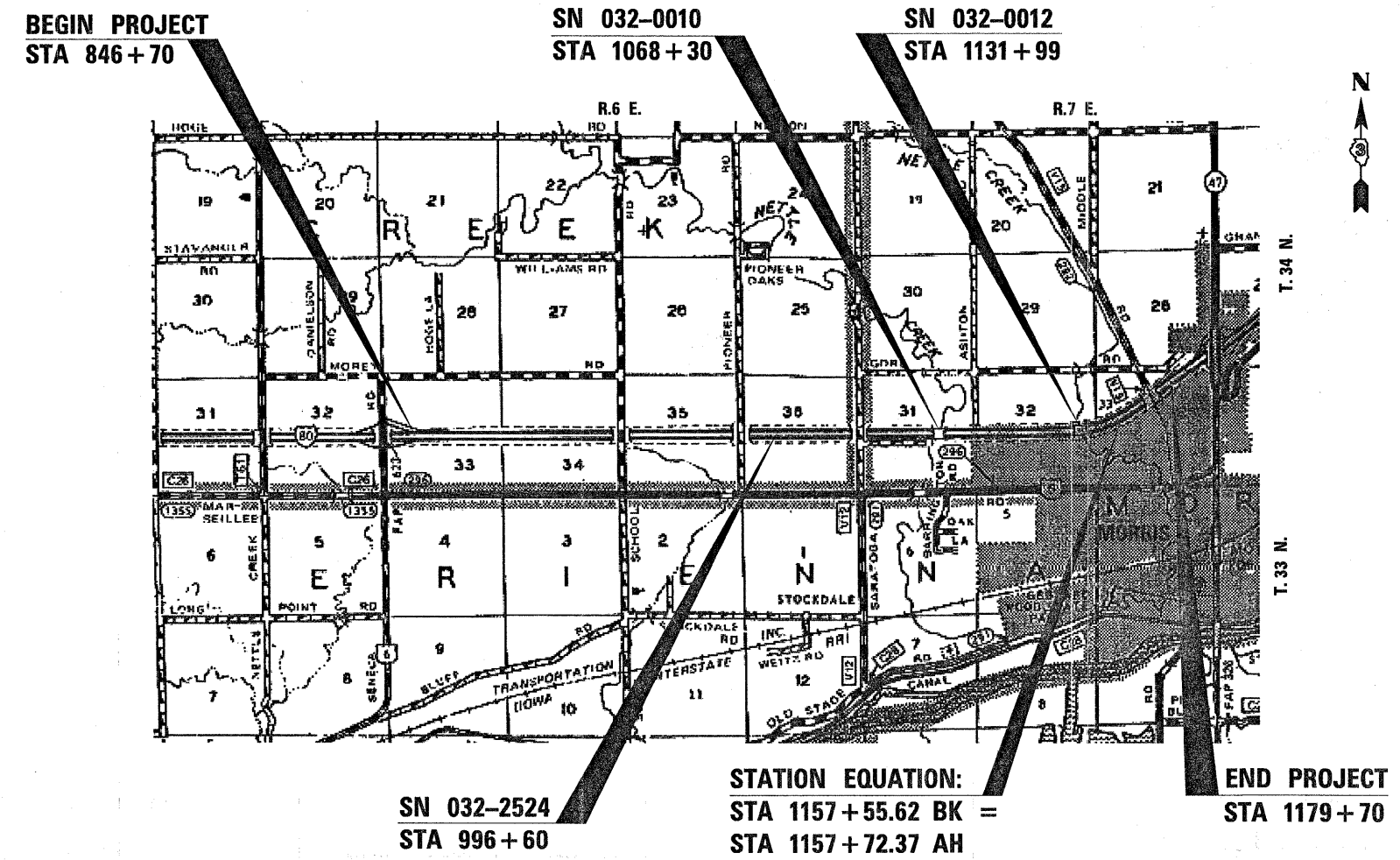
March 13, 2009
Christine M. Reed
DIRECTOR OF HIGHWAYS, CHIEF ENGINEER



FULL SIZE PLANS HAVE BEEN PREPARED USING STANDARD ENGINEERING SCALES. REDUCED SIZED PLANS WILL NOT CONFORM TO STANDARD SCALES. IN MAKING MEASUREMENTS ON REDUCED PLANS, THE ABOVE SCALES MAY BE USED.

J.U.L.I.E.
JOINT UTILITY LOCATION INFORMATION FOR EXCAVATION
1-800-892-0123
OR 811

PROJECT ENGINEER: C. REED
UNIT CHIEF: B. DUNCAN
DISTRICT 3 NO. (815) 434-6131
CONTRACT NO. 66906



GROSS AND NET LENGTH = 33283.25 FT. = 6.30 MILES

PRINTED BY THE AUTHORITY
OF THE STATE OF ILLINOIS

GENERAL NOTES
(Revised April 2, 2008)

THE THICKNESS OF HMA SHOWN ON THE PLANS IS THE NOMINAL THICKNESS. DEVIATIONS FROM THE NOMINAL THICKNESS WILL BE PERMITTED WHEN SUCH DEVIATIONS OCCUR DUE TO IRREGULARITIES IN THE EXISTING SURFACE OR BASE ON WHICH THE HMA IS PLACED.

EXCEPT AS NOTED ON THE PLANS, PAVEMENT GRADES SHOWN ARE AT THE TOP OF PAVEMENT SURFACES.

THE ENGINEER WILL BE THE SOLE JUDGE CONCERNING CURING TIME FOR THE VARIOUS HMA LIFTS.

FOR STABILIZATION, ALL TYPE III BARRICADES SHALL REQUIRE A MINIMUM OF FOUR SAND BAGS PER BARRICADE.

SHORT TERM PAVEMENT MARKING SHALL BE USED TO OUTLINE EXIT AND ENTRANCE RAMP FOR THE PRIME COAT APPLICATION AND EACH RESURFACING LIFT.

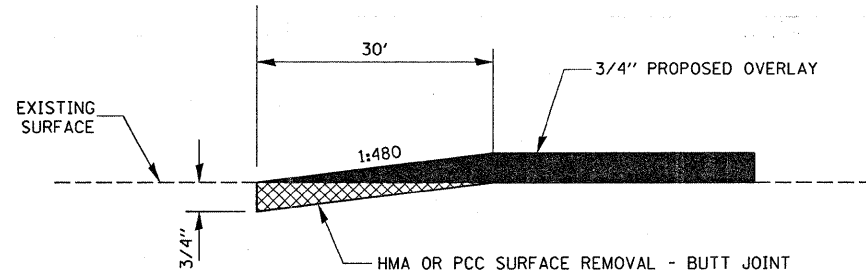
ON EXISTING PAVEMENT WHICH MAY BE SUPERELEVATED, THE NEW HMA PAVEMENT SHALL BE BUILT WITH THE SAME SUPERELEVATION UNLESS NEW SUPERELEVATION RATES ARE GIVEN ON THE PLANS.

ANY REFERENCE TO A STANDARD IN THESE PLANS SHALL BE INTERPRETED TO MEAN THE EDITION AS INDICATED BY THE SUBNUMBER SHOWN IN THE LIST OF STANDARDS OR THE COPY INCLUDED IN THESE PLANS.

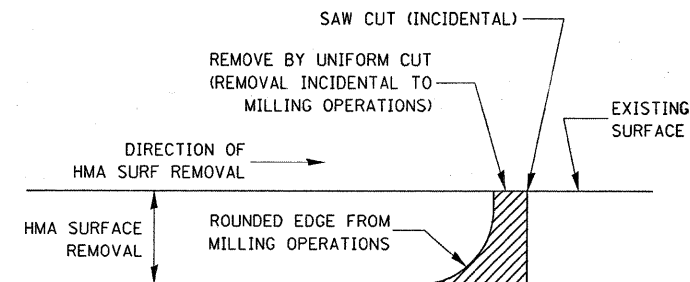
THE FOLLOWING RATES OF APPLICATION HAVE BEEN USED IN CALCULATING PLAN QUANTITIES:

GRANULAR MATERIALS	2.05	TONS / CU YD
RAPID SETTING POLYMER MODIFIED EMULSION	0.19	GAL / SQ YD
AGGREGATE PRIME COAT	0.002	TONS / SQ YD
HMA RESURFACING	112	LBS / SQ YD / IN
SHORT TERM PAVEMENT MARKING	10	FT /100 FT OF APPLICATION
MIX FOR CRACKS, JTS & FLGWYS	0.00015	TONS / SQ YD

THE CONTRACTOR SHALL CONTACT JULIE AT LEAST 48 HOURS PRIOR TO EXCAVATION TO DETERMINE WHICH UTILITIES ARE IN THE AREA.



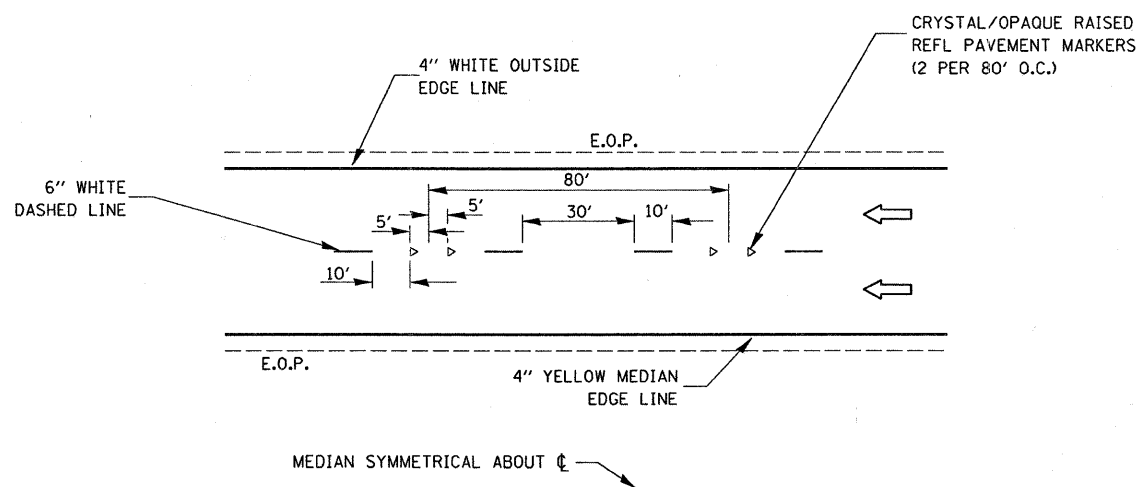
BUTT JOINT TAPER DETAIL



NOTE:

WHEN MILLING OPERATIONS PRODUCE A ROUNDED EDGE, THEN A SAW CUT SHALL BE USED TO MANUFACTURE A PERPENDICULAR EDGE AS SHOWN IN THE DETAIL. THE ENGINEER SHALL BE THE SOLE JUDGE CONCERNING THE USE OF THIS DETAIL

HMA DETAIL AT BUTT JOINTS



TYPICAL PAVEMENT MARKINGS

STATE OF ILLINOIS
DEPARTMENT OF TRANSPORTATION
DISTRICT THREE

PREPARED BY: *[Signature]*
DISTRICT STUDIES & PLANS ENGINEER

DATE: 2-3-09

EXAMINED BY: *[Signature]*
DISTRICT CONSTRUCTION ENGINEER

[Signature]
DISTRICT MATERIALS ENGINEER

[Signature]
DISTRICT OPERATIONS ENGINEER

FILE NAME =	USER NAME = verdineml	DESIGNED -	REVISED -	STATE OF ILLINOIS DEPARTMENT OF TRANSPORTATION	GENERAL NOTES AND DETAILS			F.A.I. RTE.	SECTION	COUNTY	TOTAL SHEETS	SHEET NO.
ct:\pw\work\VP\DOT\VERDINEML\d0106568\036906-sht-coover.dgn		DRAWN -	REVISED -					80	(32-2)RS-4	GRUNDY	8	2
		CHECKED -	REVISED -					CONTRACT NO. 66906				
		DATE -	REVISED -					FED. ROAD DIST. NO. ILLINOIS FED. AID PROJECT				
PLOT SCALE = 50.0000' / IN.				SCALE:	SHEET NO.	OF	SHEETS	STA.	TO STA.			
PLOT DATE = Jan 30, 2009 - 09:44:57 AM												

SUMMARY OF QUANTITIES			100% FED
CODE NO.	CONSTRUCTION CODE TYPE:		I000 TOTAL QUANTITY
	ITEM	UNIT	
21001000	GEOTECHNICAL FABRIC FOR GROUND STABILIZATION	SQ YD	258
40600400	MIXTURE FOR CRACKS, JOINTS, AND FLANGEWAYS	TON	13.4
40600982	HOT-MIX ASPHALT SURFACE REMOVAL - BUTT JOINT	SQ YD	80
40600985	PORTLAND CEMENT CONCRETE SURFACE REMOVAL - BUTT JOINT	SQ YD	80
40600990	TEMPORARY RAMP	SQ YD	28
44200630	CLASS A PATCHES, TYPE II, 15 INCH	SQ YD	183
44200631	CLASS A PATCHES, TYPE III, 15 INCH	SQ YD	75
44212900	PAVEMENT PATCHING (PARTIAL DEPTH)	SQ YD	7
44213000	PATCHING REINFORCEMENT	SQ YD	258
44213200	SAW CUTS	FOOT	1536
67100100	MOBILIZATION	L SUM	1
70100420	TRAFFIC CONTROL AND PROTECTION, STANDARD 701411	EACH	2
70100800	TRAFFIC CONTROL AND PROTECTION, STANDARD 701401	L SUM	1
70300100	SHORT-TERM PAVEMENT MARKING	FOOT	3330
70300625	TEMPORARY PAINT PAVEMENT MARKING LINE 4"	FOOT	66566
70300635	TEMPORARY PAINT PAVEMENT MARKING LINE 6"	FOOT	8322
70301000	WORK ZONE PAVEMENT MARKING REMOVAL	SQ FT	27459
* 78000200	THERMOPLASTIC PAVEMENT MARKING - LINE 4"	FOOT	66566
* 78004230	PREFORMED PLASTIC PAVEMENT MARKING, TYPE B - INLAID - LINE 6"	FOOT	8322
* 78100100	RAISED REFLECTIVE PAVEMENT MARKER	EACH	823
* 78100105	RAISED REFLECTIVE PAVEMENT MARKER (BRIDGE)	EACH	10
78300200	RAISED REFLECTIVE PAVEMENT MARKER REMOVAL	EACH	833
X0322729	MATERIAL TRANSFER DEVICE	TON	3758
X0325536	RAPID SETTING POLYMER MODIFIED EMULSION	GALLON	16999
X0325702	NIGHTTIME WORK ZONE LIGHTING	L SUM	1
X0326129	ULTRA-THIN ^{HOT-MIX ASPHALT} SURFACE COURSE	SQ YD	89467
Z0001050	AGGREGATE SUBGRADE 12"	SQ YD	258
Z0075300	TIE BARS	EACH	276

*SPECIALTY ITEMS

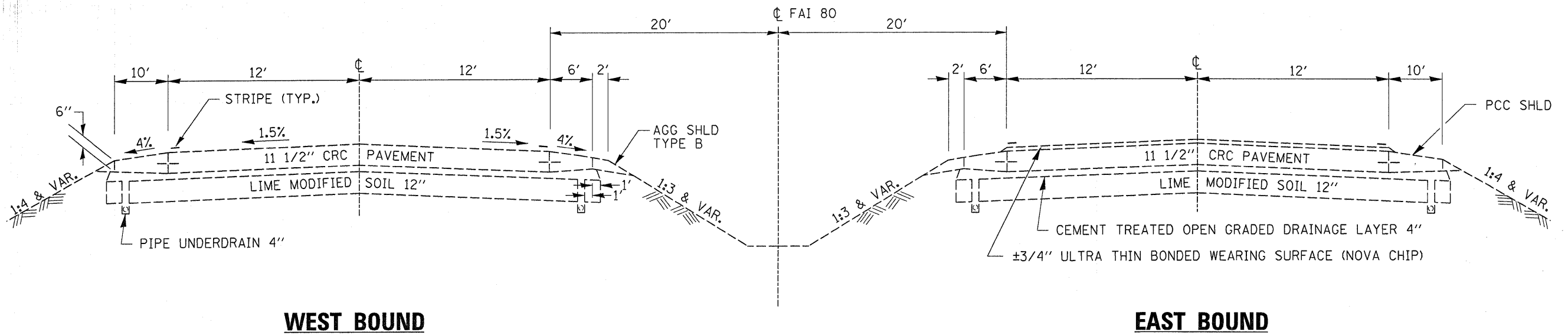
FILE NAME =	USER NAME = verdinam1	DESIGNED -	REVISED -	STATE OF ILLINOIS DEPARTMENT OF TRANSPORTATION	SUMMARY OF QUANTITIES	F.A.I. RTE.	SECTION	COUNTY	TOTAL SHEETS	SHEET NO.
ec:\pwwork\pawelc\verdina\1\0106568\0366986-sh1-cover.dgn	PLDT SCALE = 50.0000' / IN.	DRAWN -	REVISED -			80	(32-2)RS-4	GRUNDY	8	3
PLDT DATE = Jan 30, 2009 - 02:18:21 PM	CHECKED -	REVISED -	REVISED -			CONTRACT NO. 66906				
	DATE -	REVISED -	REVISED -			SCALE:	SHEET NO. OF SHEETS	STA. TO STA.	FED. ROAD DIST. NO.	ILLINOIS FED. AID PROJECT

MAINLINE SCHEDULE										
I-80 WESTBOUND LOCATION STATION TO STATION	COMMENTS	LENGTH	WIDTH	AREA	ULTRA-THIN HMA SURFACE COURSE	RAPID SETTING POLY MOD EMULSION	MIXTURE FOR CRS, JTS, & FLWYS	HMA SURFACE REMOVAL BUTT JT	PCC SURFACE REMOVAL BUTT JT	TEMP RAMP
		FEET	FEET	SQ YD	SQ YD	GALLON	TON	SQ YD	SQ YD	SQ YD
846+70.00 TO 847+00.00		30.00	24	80	80	15	0.01	80		14
847+00.00 TO 952+50.00		10550.00	24	28133	28133	5345	4.22			
952+50.00 TO 996+75.76		4425.76	24	11802	11802	2242	1.77			
996+75.76 TO 996+92.46	SN 032-2524	16.70	24	45	45	8	0.01			
996+92.46 TO 1067+39.73		7047.27	24	18793	18793	3571	2.82			
1067+39.73 TO 1069+43.58	SN 032-0010	203.85	40 *	906	906	172	0.14			
1069+43.58 TO 1130+92.16		6148.58	24	16396	16396	3115	2.46			
1130+92.16 TO 1132+88.71	SN 032-0012	196.55	40 *	874	874	166	0.13			
1132+88.71 TO 1157+55.62		2466.91	24	6578	6578	1250	0.99			
1157+55.62 = 1157+72.37	STATION EQUATION									
1157+72.37 TO 1179+40.00		2167.63	24	5780	5780	1098	0.87			
1179+40.00 TO 1179+70.00		30.00	24	80	80	15	0.01		80	14
TOTALS				89467	89467	16999	13.4	80	80	28

* WIDTH MAY REQUIRE 2 PASSES

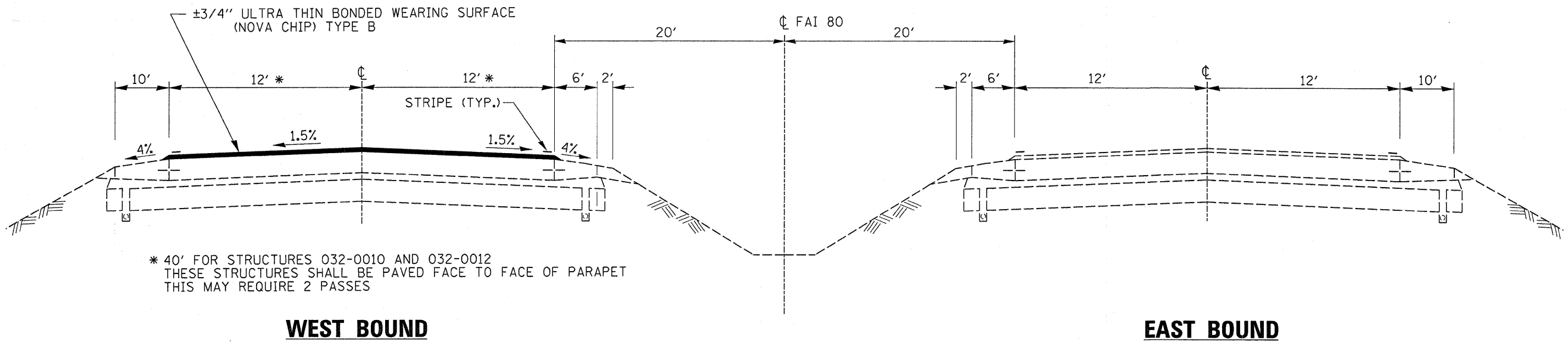
PAVEMENT MARKINGS														
I-80 WESTBOUND LOCATION STATION TO STATION	COMMENTS	LENGTH FEET	THERMOPLASTIC PAVEMENT MARKING LINE 4"		PREFORMED PLAST PAVT MKING TY B INLAID 6"	RAISED REFLECTIVE PAVEMENT MARKER			TEMPORARY PAINT PAVT MARKING			SHORT TERM PAVT MKING	WORK ZONE PAVT MKING REM	
			WHITE FOOT	YELLOW FOOT	WHITE FOOT	1 WAY CRYSTAL EACH	BRIDGE 1 WY CR EACH	REMOV EACH	4"		6"			
			FOOT	FOOT	FOOT	FOOT	FOOT	FOOT	FOOT	FOOT	FOOT			
846+70.00 TO 847+00.00		30.00	30	30	8	1		1	30	30	8	3	25	
847+00.00 TO 952+50.00		10550.00	10550	10550	2638	264		264	10550	10550	2638	1055	8704	
952+50.00 TO 996+75.76		4425.76	4426	4426	1106	111		111	4426	4426	1106	443	3651	
996+75.76 TO 996+92.46	SN 032-2524	16.70	17	17	4	0		0	17	17	4	2	14	
996+92.46 TO 1067+39.73		7047.27	7047	7047	1762	176		176	7047	7047	1762	705	5814	
1067+39.73 TO 1069+43.58	SN 032-0010	203.85	204	204	51		5	5	204	204	51	20	168	
1069+43.58 TO 1130+92.16		6148.58	6149	6149	1537	154		154	6149	6149	1537	615	5073	
1130+92.16 TO 1132+88.71	SN 032-0012	196.55	197	197	49		5	5	197	197	49	20	162	
1132+88.71 TO 1157+55.62		2466.91	2467	2467	617	62		62	2467	2467	617	247	2035	
1157+55.62 = 1157+72.37	STATION EQUATION													
1157+72.37 TO 1179+40.00		2167.63	2168	2168	542	54		54	2168	2168	542	217	1788	
1179+40.00 TO 1179+70.00		30.00	30	30	8	1		1	30	30	8	3	25	
TOTALS		33283	33283	33283	8322	823	10	833	33283	33283	8322	3330	27459	

PARTIAL DEPTH AND CLASS A PATCHING													
LOCATION			LENGTH FOOT	WIDTH FOOT	CLASS A		PATCH REINF SQ YD	SAW CUTS FOOT	AGG SUBGRADE 12" SQ YD	GEOTECH FABRIC FOR GRND STAB SQ YD	TIE BARS EACH	PARTIAL DEPTH	
MILE MARKER	STATION ±	LANE			TY II SQ YD	TY III SQ YD						EACH	SQ YD
105	827+50												
105.36	846+70		BEGIN IMPROVEMENT										
105.40	848+70	PASSING	7	12	9.3		9.3	64	9.3	9.3	12		
105.45	851+35	DRIVING	12	12		16.0	16.0	74	16.0	16.0	12		
105.60	859+30	DRIVING	8	12	10.7		10.7	66	10.7	10.7	12		
105.62	860+35	DRIVING	8	12	10.7		10.7	66	10.7	10.7	12		
105.65	861+95	DRIVING	8	12	10.7		10.7	66	10.7	10.7	12		
105.75	867+25	DRIVING	16	12		21.3	21.3	82	21.3	21.3	12		
105.78	868+85	DRIVING	8	12	10.7		10.7	66	10.7	10.7	12		
106.02	881+55	DRIVING	6	12	8.0		8.0	62	8.0	8.0	12		
106.12	886+85	DRIVING	6	12	8.0		8.0	62	8.0	8.0	12		
106.29	895+90	DRIVING	6	12	8.0		8.0	62	8.0	8.0	12		
106.30	896+40	DRIVING	6	12	8.0		8.0	62	8.0	8.0	12		
106.32	897+50	DRIVING	6	12	8.0		8.0	62	8.0	8.0	12		
106.50	907+00	DRIVING	6	12	8.0		8.0	62	8.0	8.0	12		
106.75	920+25	DRIVING	6	12	8.0		8.0	62	8.0	8.0	12		
106.90	928+20	DRIVING	16	12		21.3	21.3	82	21.3	21.3	12		
107.79	975+40	DRIVING	8	12	10.7		10.7	66	10.7	10.7	12		
107.85	978+60	DRIVING	8	12	10.7		10.7	66	10.7	10.7	12		
108.19	996+60	STRUCTURE 032-2524											
108.40	1007+75	DRIVING	8	12	10.7		10.7	66	10.7	10.7	12		
109.54	1068+30	STRUCTURE 032-0010											
110.19	1102+65	DRIVING	12	12		16.0	16.0	74	16.0	16.0	12		
110.74	1131+99	STRUCTURE 032-0012											
110.95	1142+90	DRIVING	8	12	10.7		10.7	66	10.7	10.7	12		
110.95	1142+90	PASSING	8	12	10.7		10.7	66	10.7	10.7	12		
111.23	1157+55.62 BK = 1157+72.37 AH STATION EQUATION												
111.40	1166+95	DRIVING	10	12	13.3		13.3	70	13.3	13.3	12		
111.62	1178+60	DRIVING	6	12	8.0		8.0	62	8.0	8.0	12		
111.64	1179+70	END IMPROVEMENT											
112	1198+75												
	VARIOUS	DRIVING	1	1								32	3.6
	VARIOUS	PASSING	1	1								32	3.6
			TOTALS		182.9	74.6	257.5	1536	258	258	276		7.2



EXISTING TYPICAL SECTION

STA 846+70 TO STA 1179+70

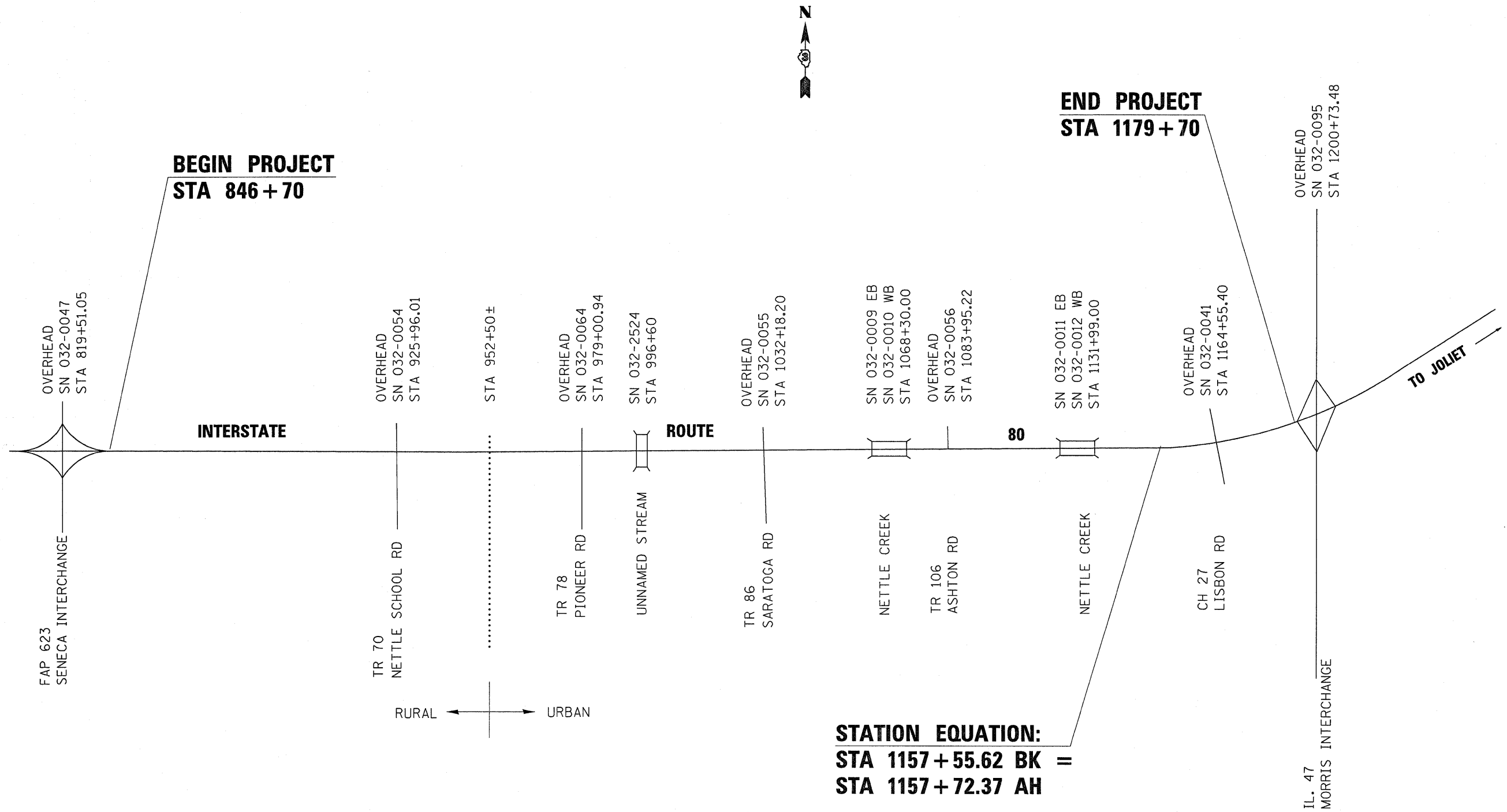


* 40' FOR STRUCTURES 032-0010 AND 032-0012
 THESE STRUCTURES SHALL BE PAVED FACE TO FACE OF PARAPET
 THIS MAY REQUIRE 2 PASSES

PROPOSED TYPICAL SECTION

STA 846+70 TO STA 1179+70

FILE NAME =	USER NAME = verdinemi	DESIGNED -	REVISED -	STATE OF ILLINOIS DEPARTMENT OF TRANSPORTATION	TYPICAL SECTIONS	F.A.I. RTE.	SECTION	COUNTY	TOTAL SHEETS	SHEET NO.
ca:\pw_work\PWIDOT\VERDINEMI\d0106568\036906-sht-cover.dgn	DRAWN -	REVISED -	80			(32-2)RS-4	GRUNDY	8	6	
PLOT SCALE = 80.0000' / 1"	CHECKED -	REVISED -	CONTRACT NO. 66906							
PLOT DATE = Feb 03, 2009 - 10:44:46 AM	DATE -	REVISED -	FED. ROAD DIST. NO. [ILLINOIS] FED. AID PROJECT							
SCALE:						SHEET NO.	OF	SHEETS	STA.	TO STA.

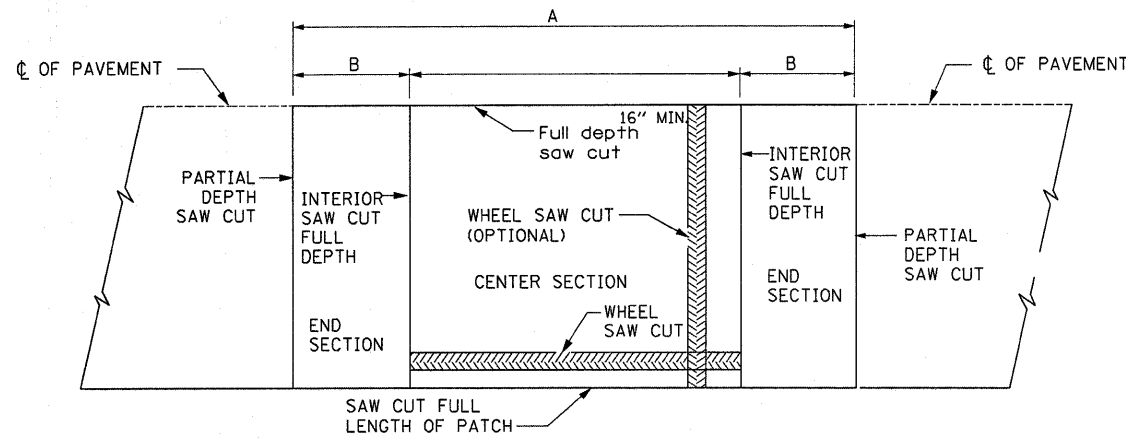


**BEGIN PROJECT
STA 846 + 70**

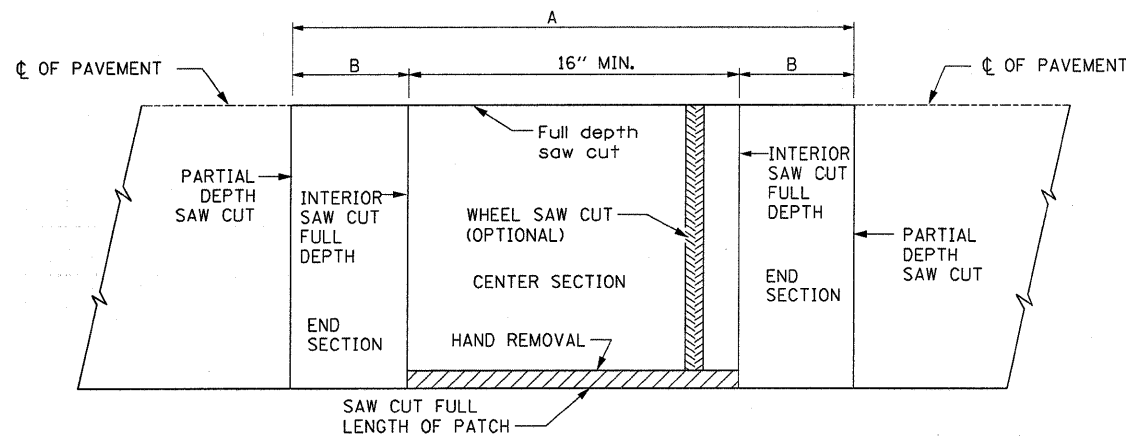
**END PROJECT
STA 1179 + 70**

**STATION EQUATION:
STA 1157 + 55.62 BK =
STA 1157 + 72.37 AH**

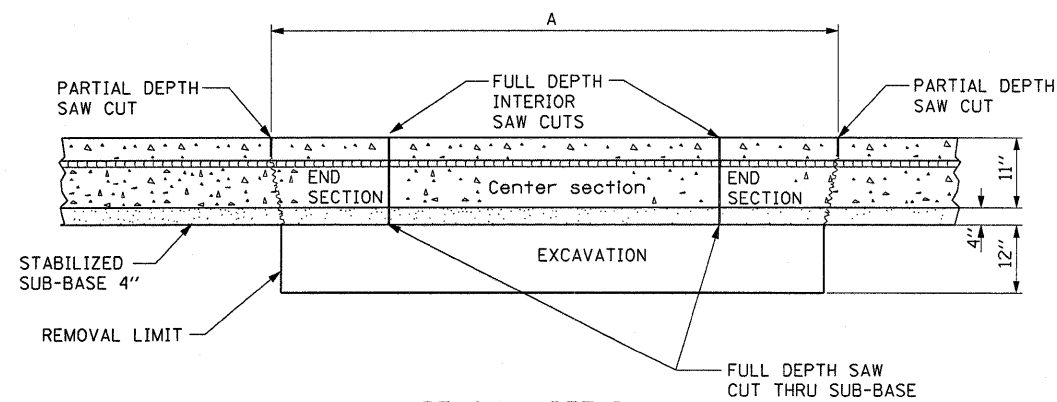
FILE NAME = c:\pw_work\PWIDOT\VERDINEM\0106568\036906-sht-cover.dgn	USER NAME = verdinemi	DESIGNED -	REVISED -	STATE OF ILLINOIS DEPARTMENT OF TRANSPORTATION	PROJECT LAYOUT PLAN VIEW			F.A.I RTE. 80	SECTION (32-2)RS-4	COUNTY GRUNDY	TOTAL SHEETS 8	SHEET NO. 7
	PLOT SCALE = 50.0000' / IN.	CHECKED -	REVISED -					CONTRACT NO. 66906				
	PLOT DATE = Feb 03, 2009 - 11:02:52 AM	DATE -	REVISED -					FED. ROAD DIST. NO.	ILLINOIS FED. AID PROJECT			
								SCALE:	SHEET NO. OF SHEETS	STA. TO STA.		



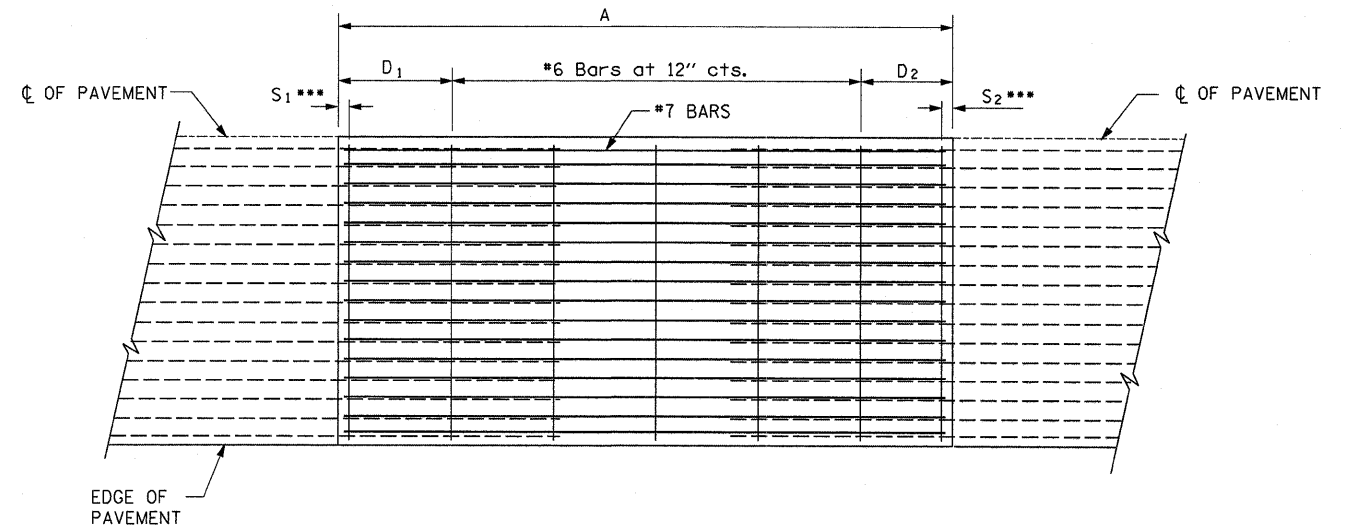
ALTERNATE SAWING DETAIL
(PCC SHOULDER)



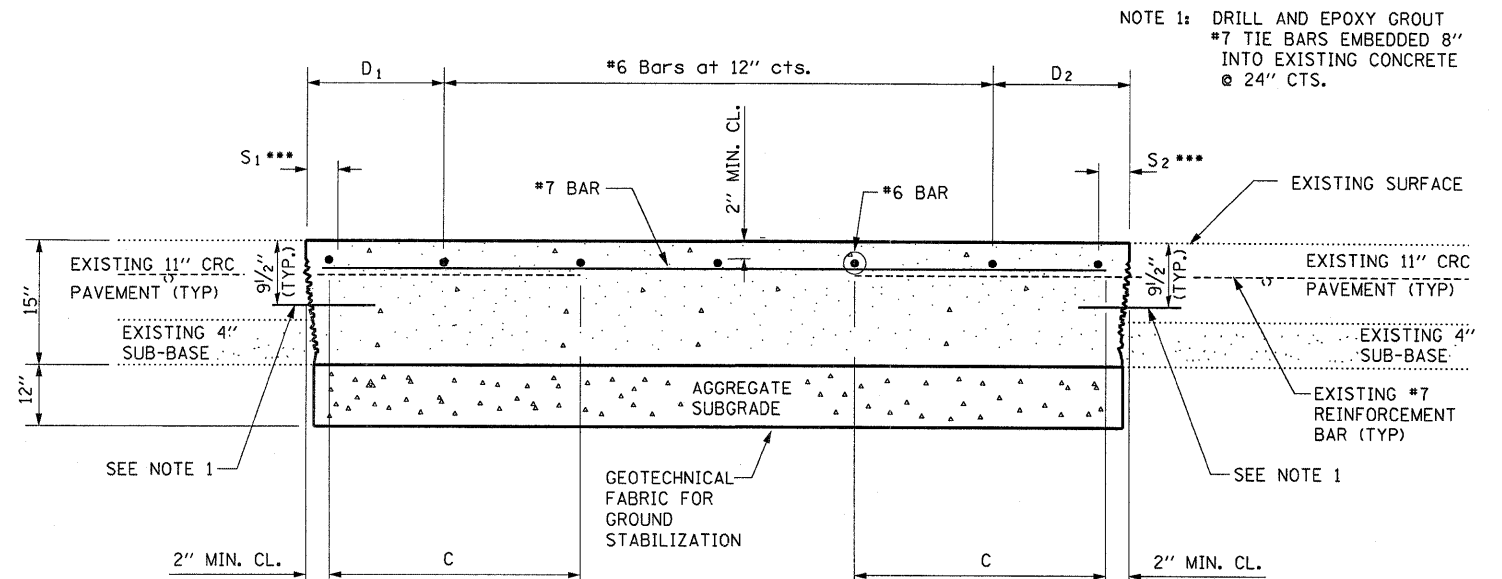
PAVEMENT SAWING DETAIL
(PCC SHOULDER)



REMOVAL DETAIL



PROPOSED PAVEMENT DETAIL
(AGAINST CONCRETE SHOULDER)



PROPOSED CLASS A PATCHING DETAIL

EXISTING LONGITUDINAL REINFORCEMENT BARS	A (min.)	B (min.)	C (min.)
No. 7	6'-0"	24"	22"

- NOTES:**
- EVERY 3rd INTERSECTION MUST BE TIED
 - LAP NEW REINFORCEMENT WITH EXISTING LONGITUDINAL REINFORCEMENT
 - VARIABLES: WHERE S_1 AND S_2 ARE $2\frac{1}{2}$ " MIN. AND 12" MAX. $D_1 = 2(S_1)$ AND $D_2 = 2(S_2)$

FILE NAME =	USER NAME = verdinml	DESIGNED -	REVISED -
ct\pw_work\PWIDOT\VERDINML\d0106568\036906-shr-cover.dgn		DRAWN -	REVISED -
		CHECKED -	REVISED -
		DATE -	REVISED -

STATE OF ILLINOIS
DEPARTMENT OF TRANSPORTATION

CLASS A PATCHING DETAILS

SCALE: SHEET NO. OF SHEETS STA. TO STA.

F.A.I. RTE.	SECTION	COUNTY	TOTAL SHEETS	SHEET NO.
80	(32-2)RS-4	GRUNDY	8	8
CONTRACT NO. 66906				
FED. ROAD DIST. NO. [ILLINOIS] FED. AID PROJECT				