

DESIGNER: Elias Elderzi (309-671-3459) PROJECT ENGR.: MAUREEN ADDIS (309-671-3454)

CONTRACT NO. 68634

F.A.P. RTE.	SECTION	COUNTY	TOTAL SHEETS	SHEET NO.
22	131RS-4	PEORIA	17	1

INDEX OF SHEETS

- 1 COVER SHEET
- 2-3 GENERAL NOTES / COMMITMENTS
- 4-5 SUMMARY OF QUANTITIES
- 6 TYPICAL SECTIONS
- 7-8 SCHEDULE OF QUANTITIES
- 9 LINE DIAGRAM
- 10-11 SIDEROADS DETAILS
- 12 ROUTE 8 PAVEMENT MARKING DETAIL
- 13-17 DISTRICT CADD STANDARDS

STANDARDS

- 701006-03
- 701011-02
- 701301-03
- 701306-02
- 701311-03
- 701336-05
- 701901-01
- 780001-02
- 781001-03

DESIGN DESIGNATION

RURAL MAJOR COLLECTOR
 ADT = 1,550 VEHICLES
 PV = 86.7%
 SU = 5.2%
 MU = 8.1%

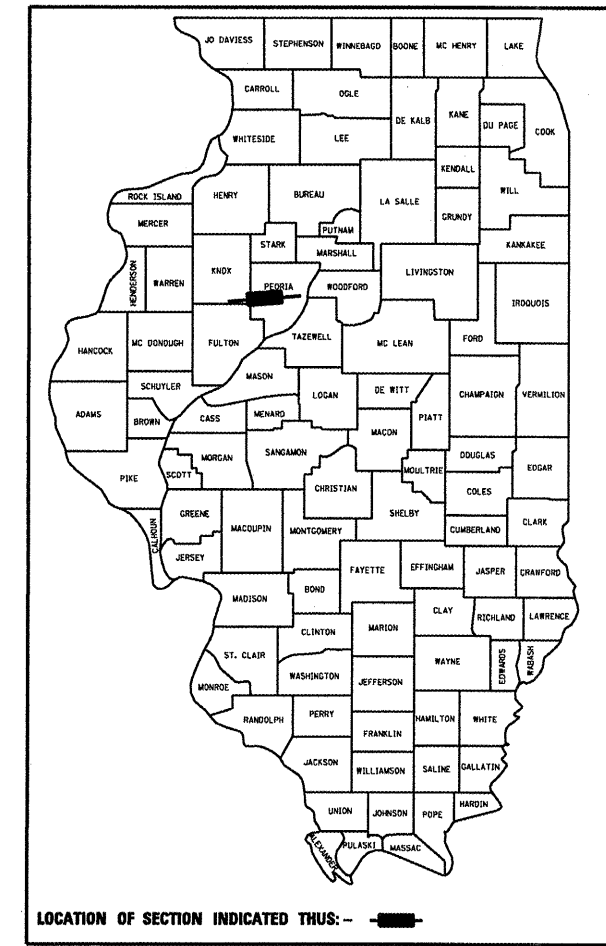
J.U.L.I.E.
 JOINT UTILITY LOCATION INFORMATION FOR EXCAVATION
 1-800-892-0123

STATE OF ILLINOIS
 DEPARTMENT OF TRANSPORTATION
 DIVISION OF HIGHWAYS

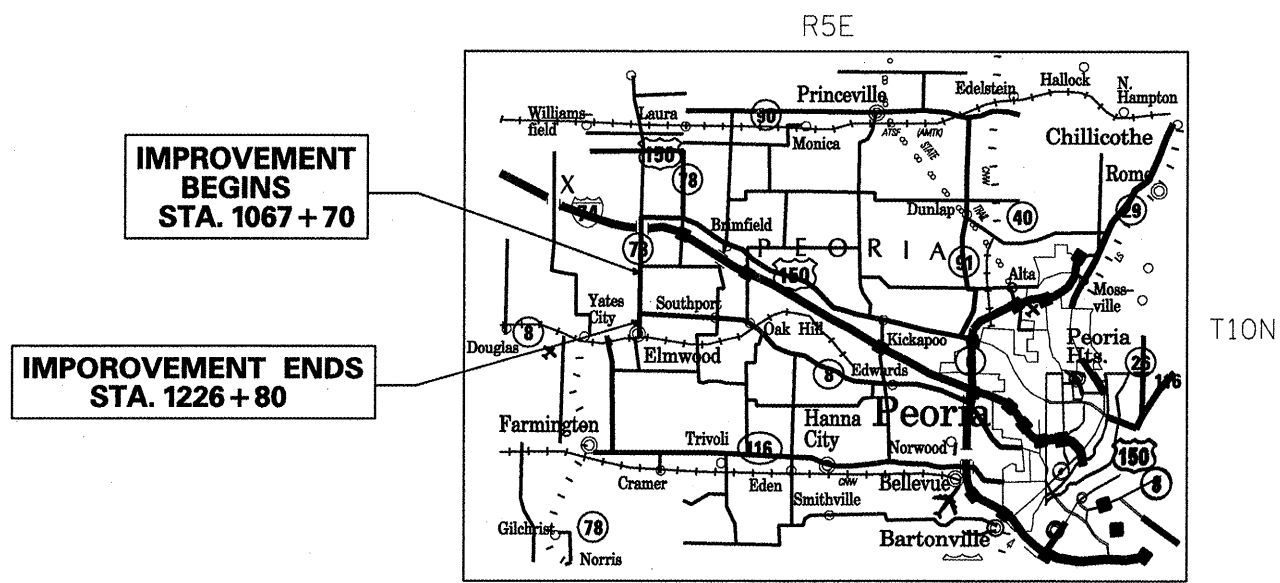
**PROPOSED
 HIGHWAY PLANS**

FAP 22 ROUTE IL 78
 SECTION 131RS-4
 PEORIA COUNTY
 C-94-168-06
 PROJECT ESP-0022(071)

D-94-102-06



LOCATION OF SECTION INDICATED THUS: -



IMPROVEMENT
 BEGINS
 STA. 1067 + 70

IMPROVEMENT ENDS
 STA. 1226 + 80

GROSS LENGTH = 3.06 MILES
 NET LENGTH = 3.06 MILES

DESCRIPTION:
 RESURFACING ON IL 78 1 MILE
 SOUTH OF I-74 TO IL 8 (E)

STATE OF ILLINOIS
 DEPARTMENT OF TRANSPORTATION
 DIVISION OF HIGHWAYS
 SUBMITTED *Feb 4, 2009*
[Signature]
 DEPUTY DIRECTOR OF HIGHWAYS, REGION ENGINEER
March 13, 2009
Charles J. Ingersoll
 ENGINEER OF DESIGN AND ENVIRONMENT
March 13, 2009
Christine M. Reed
 DIRECTOR OF HIGHWAYS, CHIEF ENGINEER

PRINTED BY THE AUTHORITY
 OF THE STATE OF ILLINOIS

F.A.P. RTE.	SECTION	COUNTY	TOTAL SHEETS	SHEET NO.
22	131RS-4	PEORIA	17	2
FED. ROAD DIST. NO. - ILLINOIS		FED. AID PROJECT		

COMMITMENTS

Commitments are not to be altered without the written consent of all parties to which the commitment was made.

No Commitments have been made for this project.

AGGREGATE SHOULDERS, TYPE B

Aggregate Shoulders, Type B shall be required for all granular construction of side roads, entrances, and mailbox turnouts, whether or not a portion of the surfaces thus constructed are to be covered with a bituminous surface, except where noted differently on the plans.

BUTT JOINTS CUTTING TIME RESTRICTION

Butt Joints shall not be milled more than three (3) days prior to placement of the hot-mix asphalt surface course.

ENVIRONMENTAL REVIEWS

Prior to the use of any proposed borrow areas, use areas (temporary access roads, detours, run-arounds, etc.) and/or waste areas, the Contractor shall file the required environmental resource request surveys according to Section 107.22 of the Standard Specifications. These surveys are required in order for the Department to conduct cultural and biological resource surveys for the proposed site.

Prior to any waste materials being removed from the construction site the required environmental resource surveys will need to be obtained and filed by the Contractor. Excess waste products removed from the construction site shall be disposed of as required in Section 202.03 of the Standard Specifications.

Any protruding metal bars shall be removed prior to the disposal of broken concrete at approved disposal sites.

The required environmental resource documentation shall include the following:

- BDE Form 2289 (Environmental Survey Request)
- A location map showing the size limits and location of the use area
- Signed property owner agreement form
- Color photographs depicting the use area
- Borrow Area entry Agreement form - D4 P10101

Please note that a minimum of two weeks shall be allowed for the District to obtain the required environmental clearances.

REVISIONS	
NAME	DATE

ILLINOIS DEPARTMENT OF TRANSPORTATION

GENERAL NOTES

IL 78 (FAP 22)

DRAWN BY _____

CHECKED BY _____

DATE _____

F.A.P. RTE.	SECTION	COUNTY	TOTAL SHEETS	SHEET NO.
22	131RS-4	PEORIA	17	3
FED. ROAD DIST. NO. _		ILLINOIS	FED. AID PROJECT	

GENERAL NOTES (CONTINUED)

PAVEMENT STATION NUMBERS AND PLACEMENTS

The Contractor shall provide labor and materials required to imprint pavement station numbers in the finished surface of the pavement and/or overlay. The numbers shall be approximately 3/4 inch (20mm) wide, 5 inches (125mm) high and 5/8 inch (15mm) deep.

The pavement station numbers shall be installed as specified herein:

Interval - 200 feet (English stationing) or 100 meters (metric stationing)

Bottom of Numbers - 6 inches (150 mm) from the inside edge of the pavement marking

Location:

- 2, 3, & 5 Lane Pavements - right edge of pavement in direction of increasing stations
- Multi-lane Divided Roadways - outside edge of pavement in both directions
- Ramps - along baseline edge of pavement

Position - stations shall be placed so they can be read from the adjacent shoulder

Format - English (Metric) pavement stations shall use this format "XX+X00 (XXX)", where X represents the pavement station

This work will not be paid for separately, but will be included in the cost of the associated pavement and/or overlay pay items.

PAVING SURFACE COURSE

Continuous paving operations on the main roadway shall be maintained at all times during the construction of the hot-mix asphalt surface. No interruptions for side roads, entrances, turn lanes, etc. will be allowed.

ENGINEERS FIELD OFFICE

Add the following sentence to the end of paragraph 670.02(i) and 670.04(e):

All of the telephone lines provided shall have unpublished numbers.

HOT-MIX ASPHALT MIXTURE REQUIREMENT

Mixture Uses(s):	Leveling Binder	Surface Course	Incidental HMA Surfacing	Patching
AC / PG	SBS OR SBR 70-22	PG 64-22	PG 64-22	PG 64-22
RAP %: (Max) **	0%	15%	15%	25%
Design Air Voids:	3.0% @ N=50	4.0% @ N=50	4.0% @ N=50	4.0% @ N=50
Mixture Compition: (GRADATION MIXTURE)	IL 4.75	IL 9.5 or IL 12.5	IL 9.5 or IL 12.5	IL 19.0
Friction Aggregate:	N.A.	MIXTURE D (Dolomite only)	MIXTURE D (Dolomite only)	N.A.

** IF THE RAP OPTION IS SELECTED, THE ASPHALT CEMENT GRADE MAY NEED TO BE ADJUSTED; THIS WILL BE DETERMINED BY THE MATERIALS ENGINEER.

NOTE: THIS PROJECT INCORPORATES THE BAILEY METHOD FINE GRADED IL 9.5 FOR LEVEL BINDER

JOB SPECIFIC NOTES

PERMANENT SURVEY MARKERS

Where section or subsection monuments are encountered, the engineer shall be notified before such monuments are removed. The Contractor shall protect and carefully preserve all monuments until an authorized surveyor or agent has witnessed or otherwise referenced their location. The Contractor shall be responsible for having an authorized surveyor reestablish any section or subsection monuments destroyed by his operations.

SIDEROADS

Milling and Resurfacing limits need to verified by the Resident Engineer prior to each operation.

REVISIONS		ILLINOIS DEPARTMENT OF TRANSPORTATION
NAME	DATE	
		GENERAL NOTES IL 78 (FAP 22)
DATE		DRAWN BY CHECKED BY

F.A.P. RTE.	SECTION	COUNTY	TOTAL SHEETS	SHEET NO.
22	131RS-4	PEORIA	17	4
FED. ROAD DIST. NO.		ILLINOIS	FED. AID PROJECT	

SUMMARY OF QUANTITIES					100% FED.
					ROADWAY
CODE NO.	PAY ITEM	UNIT	TOTAL QUANTITY	1000	
40600215	POLYMERIZED BITUMINOUS MATERIALS (PRIME COAT)	TON	24.4	24.4	
40600300	AGGREGATE (PRIME COAT)	TON	94	94	
X4067107	POLYMERIZED LEVELING BINDER (MACHINE METHOD), IL 4.75, N50	TON	1,911	1,911	
40600895	CONSTRUCTING TEST STRIP	EACH	1	1	
40600982	HOT-MIX ASPHALT SURFACE REMOVAL - BUTT JOINT	SQ YD	1,873	1,873	
40600990	TEMPORARY RAMP	SQ YD	251	251	
40603335	HOT-MIX ASPHALT SURFACE COURSE, MIX "D", N50	TON	3,564	3,564	
40800050	INCIDENTAL HOT-MIX ASPHALT SURFACING	TON	425	425	
44000151	HOT-MIX ASPHALT SURFACE REMOVAL, 1/2"	SQ YD	45,106	45,106	
44201815	CLASS D PATCHES, TYPE II, 14 INCHES	SQ YD	1507	1507	
44201819	CLASS D PATCHES, TYPE III, 14 INCHES	SQ YD	96	96	
48101200	AGGREGATE SHOULDERS, TYPE B	TON	1210	1210	
66700205	PERMANENT SURVEY MARKERS, TYPE 2	EACH	1	1	
66700605	PERMANENT SURVEY TIES	EACH	4	4	
67000500	ENGINEER'S FIELD OFFICE, TYPE B	CAL MO	2	2	
67100100	MOBILIZATION	L SUM	1	1	
70100460	TRAFFIC CONTROL AND PROTECTION, STANDARD 701306	L SUM	1	1	
70300100	SHORT - TERM PAVEMENT MARKING	FOOT	4,740	4,740	

SUMMARY OF QUANTITIES

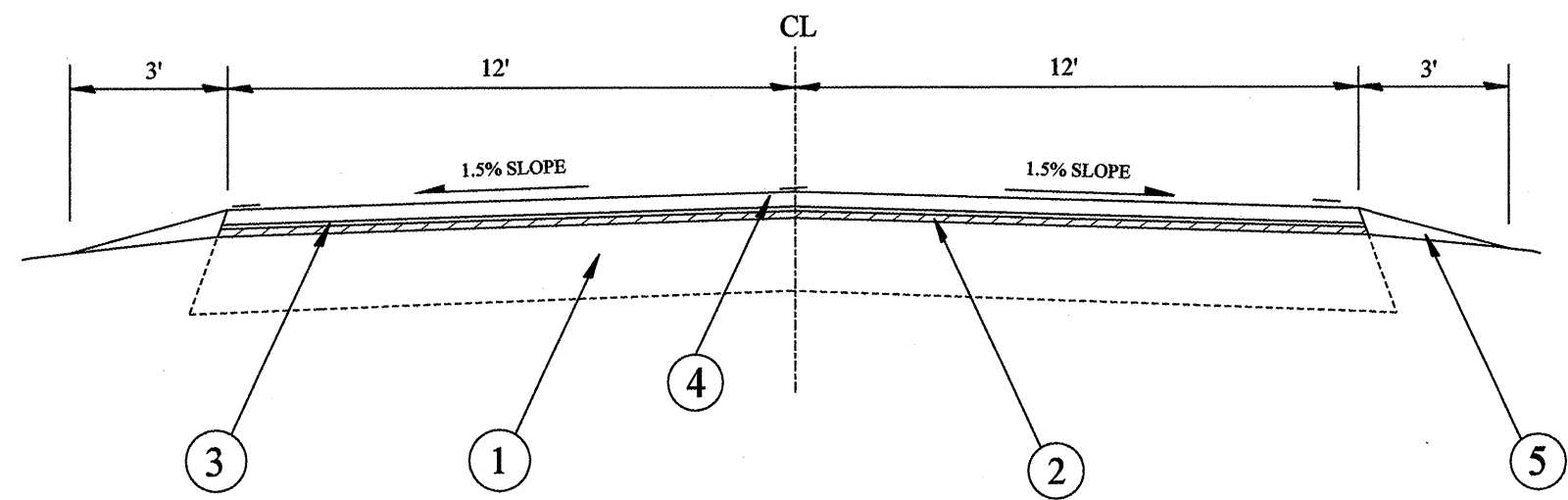
F.A.P. RTE.	SECTION	COUNTY	TOTAL SHEETS	SHEET NO.
22	13IRS-4	PEORIA	17	5
FED. ROAD DIST. NO. .		ILLINOIS FED. AID PROJECT		

SUMMARY OF QUANTITIES					100% FED.
					ROADWAY
CODE NO.	PAY ITEM	UNIT	TOTAL QUANTITY	1000	
70300220	TEMPORARY PAVEMENT MARKING-LINE 4"	FOOT	46,335	46,335	
70300250	TEMPORARY PAVEMENT MARKING-LINE 8"	FOOT	258	258	
70300260	TEMPORARY PAVEMENT MARKING-LINE 12"	FOOT	99	99	
70300280	TEMPORARY PAVEMENT MARKING-LINE 24"	FOOT	35	35	
70301000	WORK ZONE PAVEMENT MARKING REMOVAL	SQ FT	527	527	
* 78005110	EPOXY PAVEMENT MARKING - LINE 4"	FOOT	46,335	46,335	
* 78005140	EPOXY PAVEMENT MARKING - LINE 8"	FOOT	258	258	
* 78005150	EPOXY PAVEMENT MARKING - LINE 12"	FOOT	99	99	
* 78005180	EPOXY PAVEMENT MARKING - LINE 24"	FOOT	35	35	
* 78100100	RAISED REFLECTIVE PAVEMENT MARKER	EACH	200	200	
70100600	TRAFFIC CONTROL AND PROTECTION, STANDARD 701336	L SUM	1	1	

* SPECIALTY ITEM

SUMMARY OF QUANTITIES

F.A.P. RTE.	SECTION	COUNTY	TOTAL SHEETS	SHEET NO.
22	13IRS-4	PEORIA	17	6
FED. ROAD DIST. NO. -		ILLINOIS	FED. AID PROJECT	



Sta. 1067+70 to 1226+80

LEGEND

- 1. EXISTING PAVEMENT
- 2. PROPOSED HMA SURFACE REMOVAL, 1/2"
- 3. PROPOSED POLYMERIZED LEVELING BINDER, N50, 3/4"
- 4. PROPOSED HMA SURFACE CSE, MIX D, N50, 1 1/2"
- 5. PROPOSED AGGREGATE SHOULDER TY B, WEDGE

REVISIONS	
NAME	DATE

ILLINOIS DEPARTMENT OF TRANSPORTATION

TYPICAL SECTIONS
IL 78 (FAP 22)

DRAWN BY _____
CHECKED BY _____
DATE _____

F.A.P. RTE.	SECTION	COUNTY	TOTAL SHEETS	SHEET NO.
22	131RS-4	PEORIA	17	7
FED. ROAD DIST. NO. - ILLINOIS		FED. AID PROJECT		

ENGINEER'S FIELD OFFICE TYPE B	
LOCATION	CAL MO
JOBSITE	2
TOTAL	2

EPOXY PAVEMENT MARKINGS					
LOCATION	4"	4"	8"	12"	24"
	YELLOW FEET	WHITE FEET	WHITE FEET	WHITE FEET	WHITE FEET
Sta. 1067+70 to 1226+80	13,999	31,820			
Route 8 Intersection	50	466	258	99	35
TOTAL	14,049	32,286	258	99	35

PERMANENT SURVEY MARKERS, TYPE 1	
LOCATION	EACH
CENTERLINE OF IL 78 AND IL 8 INTERSECTION	1
TOTAL	1

MOBILIZATION	
LOCATION	L SUM
JOBSITE	1
TOTAL	1

TEMPORARY PAVEMENT MARKINGS					
LOCATION	4"	4"	8"	12"	24"
	YELLOW FEET	WHITE FEET	WHITE FEET	WHITE FEET	WHITE FEET
Sta. 1067+70 to 1226+80	13,999	31,820			
Route 8 Intersection	50	466	258	99	35
TOTAL	14,049	32,286	258	99	35

PERMANENT SURVEY TIES	
LOCATION	EACH
CENTERLINE OF IL 78 AND IL 8 INTERSECTION	4
TOTAL	4

TRAFFIC CONTROL & PROTECTION, STANDARD 701306	
LOCATION	L SUM
JOBSITE	1
TOTAL	1

SHORT TERM PAVEMENT MARKING	
LOCATION	FEET
Sta. 1067+70 to 1226+80	1,580
Total	1,580
3 Application (Milled, Binder & Surface)	
3 x 1,580	4,740
TOTAL	4,740

CLASS D PATCHES 14 INCHES		
LOCATION	TYPE II	TYPE III
	SQYD	SQYD
BEGINING STA. 1067+70 TO SHISSLERS RD	397.3	0
SHISSLERS RD TO CLAYBAUGH RD	461.3	32.0
CLAYBAUGH RD TO ROSEBONM RD	216.0	64.0
ROSEBONM RD TO ENDING STA. 1226+80	432.0	0
TOTAL	1507.0	96.0

TRAFFIC CONTROL & PROTECTION, STANDARD 701336	
LOCATION	L SUM
JOBSITE	1
TOTAL	1

RAISED REFLECTIVE PAVEMENT MARKERS	
LOCATION	EACH
1067+30 to 1226+80	200
TOTAL	200

CONSTRUCTING TEST STRIP	
LOCATION	EACH
JOBSITE	1
TOTAL	1

WORK ZONE PAVEMENT MARKING REMOVAL	
LOCATION	SQ FT
Sta. 1067+70 - 1226+80	527
TOTAL	527

SCHEDULE OF QUANTITIES

F.A.P. RTE.	SECTION	COUNTY	TOTAL SHEETS	SHEET NO.
22	131RS-4	PEORIA	17	8
FED. ROAD DIST. NO.		ILLINOIS	FED. AID PROJECT	

TABULATION OF RESURFACING QUANTITIES

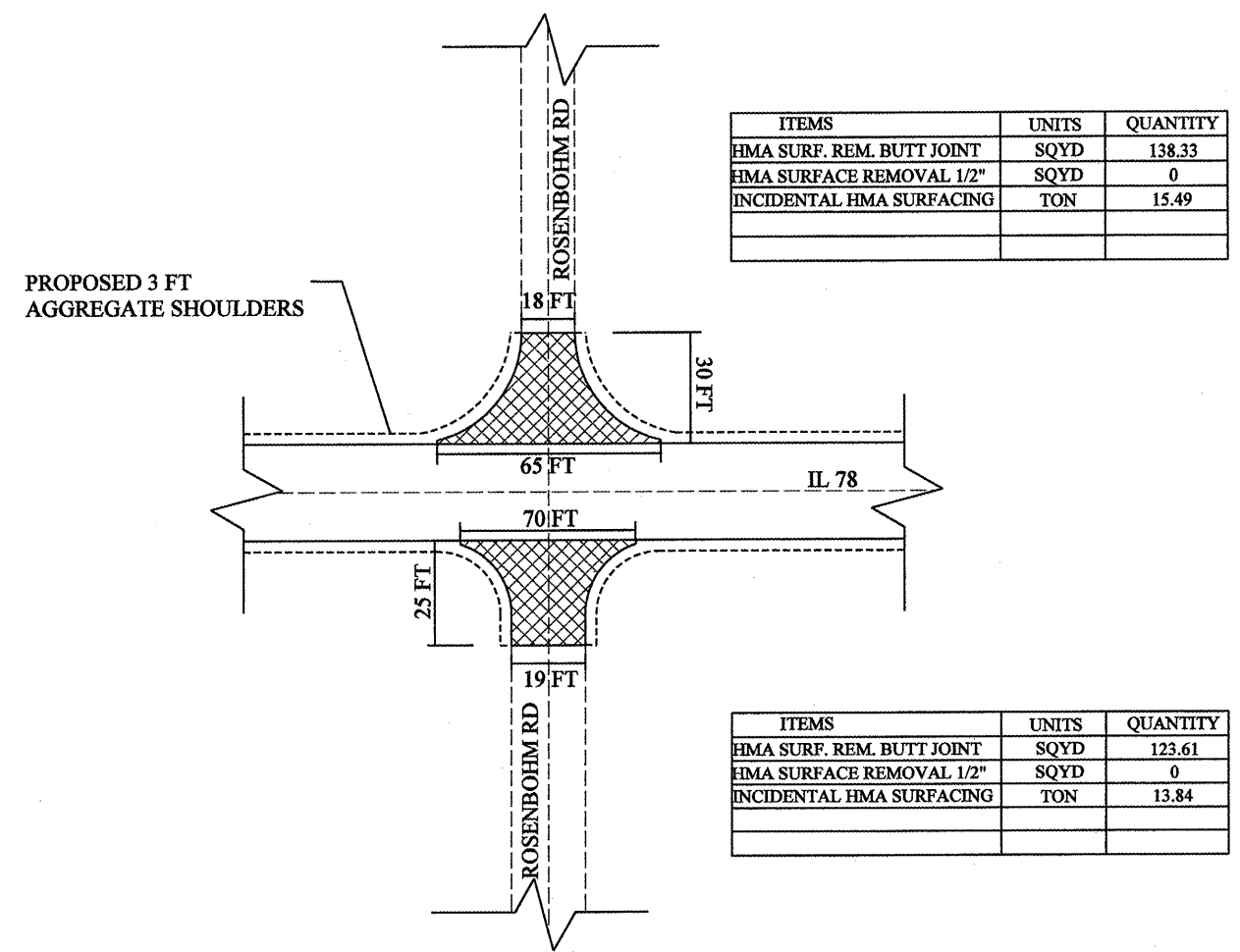
LOCATION	TOTAL ROADWAY WIDTH	LENGTH	AREA	HMA SURFACE REMOVAL BUTT JOINT	TEMPORARY RAMP	HMA SURFACE REMOVAL 0.5 IN	POLY BIT MATERIALS PRIME COAT	AGGREGATE MATERIALS PRIME COAT	P LEVELING BINDER (MM) IL 4.75 ,N50 0.75 IN	HMA SURF CSE MIX D,N50 1.5 IN	INCIDENTAL HMA SURFACING	AGGREGATE SHOULDERS TYPE B (WEDGE)	
												LEFT SIDE	RIGHT SIDE
	FT	FT	SQ YD	SQ YD	SQ YD	SQ YD	TON	TON	TON	TON	TON	TON	TON
STA. 1067 + 70 TO 1068 + 00	24.00	30.00	80.00	80.00	28.89		0.04	0.16		6.72		0.57	0.57
STA. 1068 + 00 TO 1226 + 50	24.00	15850.00	42266.67			42266.67	21.98	84.53	1791.92	3550.40		604.0	604.0
STA. 1226 + 50 TO 1226 + 80	24.00	30.00	80.00	80.00	28.89		0.04	0.16		6.72		0.57	0.57
Sideroads													
Shissler Road													
STA. 1090 + 00 Rt.		26.00	150.22	150.22	23.33		0.08	0.30			16.82		
STA. 1090 + 00 Lt.		100.00	903.86	83.30	24.44	820.56	0.47	1.81	34.46		75.92		
Claybaugh Road													
STA. 1143 + 79 Rt.		27.00	130.50	130.50	22.22		0.07	0.26			14.62		
STA. 1143 + 79 Lt.		26.00	132.89	132.89	24.44		0.07	0.27			14.88		
Rosenbohm Road													
STA. 1170 + 38 Rt.		25.00	123.61	123.61	21.11		0.06	0.25			13.84		
STA. 1170 + 38 Lt.		30.00	138.33	138.33	20.00		0.07	0.28			15.49		
Gerber Road													
STA. 1222 + 49 Rt.		51.00	410.83	410.83	27.78		0.21	0.82			46.01		
Route 8													
STA. 1222 + 49 Lt.		138.00	1999.30	103.30	30.00	1896.00	1.04	4.00	79.63		167.94		
Driveways													
STA. 1083 + 00 Lt. MB Turnout		72.00	40.89			40.89	0.02		1.72		3.43		
STA. 1083 + 70 Lt.		19.00	49.60	49.60			0.03	0.10			5.56		
STA. 1114 + 68 Rt.		23.00	71.60	71.60			0.04	0.14			8.02		
STA. 1115 + 44 Rt. MB Turnout		72.00	40.89			40.89	0.02		1.72		3.43		
STA. 1165 + 52 Rt.		20.00	81.10	81.10			0.04	0.16			9.08		
STA. 1213 + 19 Lt.		20.00	38.90	38.90			0.02	0.08			4.36		
STA. 1213 + 10 Rt. MB Turnout		72.00	40.89			40.89	0.02		1.72		3.43		
STA. 1213 + 32 Rt.		20.00	105.60	105.60			0.05	0.21			11.83		
STA. 1213 + 73 Lt.		20.00	51.10	51.10			0.03	0.10			5.72		
STA. 1214 + 64 Lt.		15.00	41.70	41.70			0.02	0.08			4.67		
GRAND-TOTAL				1,872.58	251.1	45,105.9	24.4	93.7	1,911.2	3,563.8	425.2	605	605
											TOTAL	1210	

SURFACE TYPE	P BIT PR COAT (GAL/SQ YD)	AGG PR COAT (LB/SQ YD)
COLD MILLED SURFACES	0.1	4
EXISTING PAVEMENT	0.05	4
NEW HOT-MIX ASPHALT COURSES	0.03	2

SURFACE TYPE	
HMA SURF. COURSES	112 LB /SQ YD/IN
ALL OTHER HMA	112 LB /SQ YD/IN
AGGREGATE SHOULDERS	2.05 TONS/CUYD

SCHEDULE OF QUANTITIES

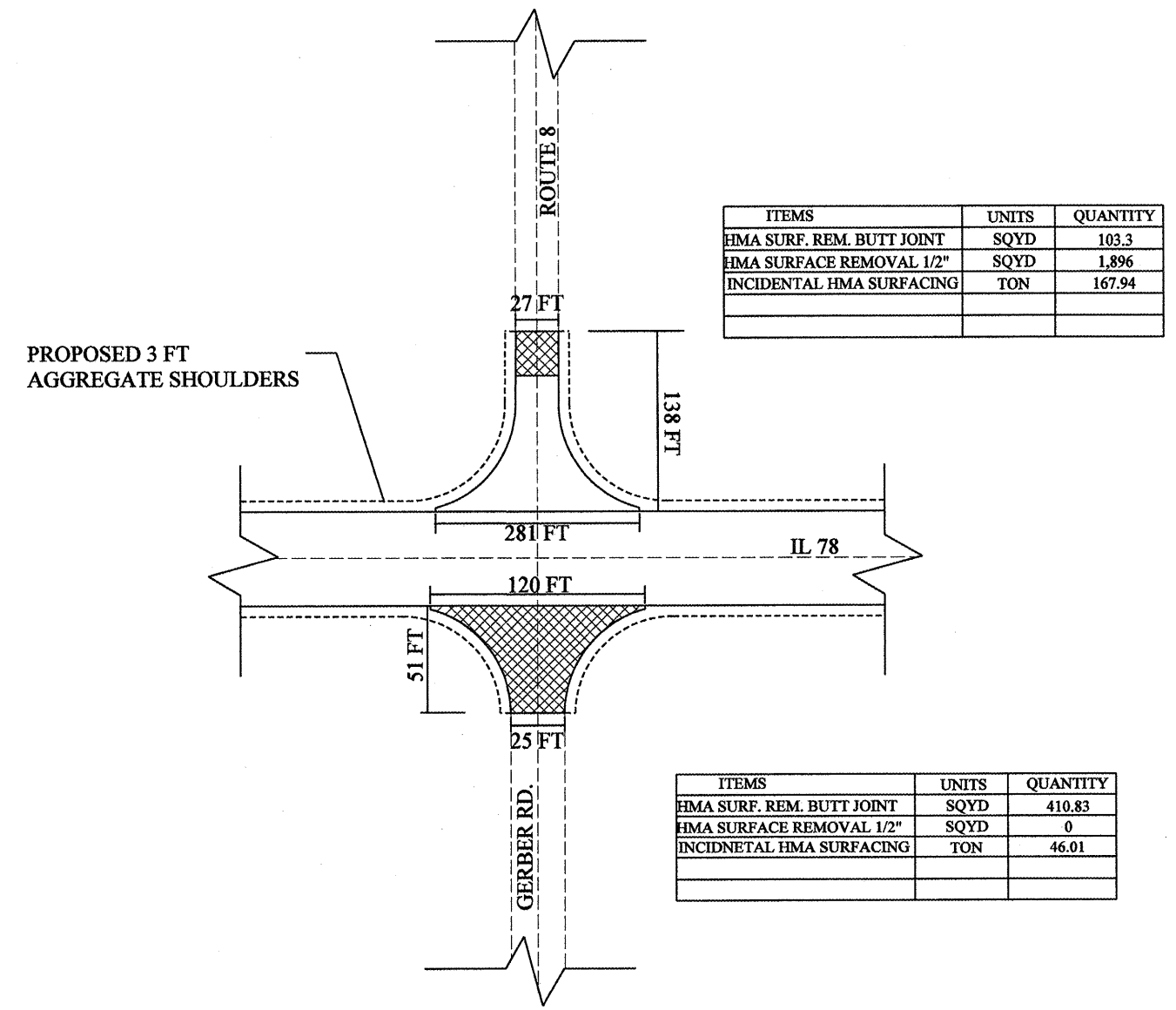
F.A.P. RTE.	SECTION	COUNTY	TOTAL SHEETS	SHEET NO.
22	131RS-4	PEORIA	17	11
FED. ROAD DIST. NO. ILLINOIS FED. AID PROJECT				



ITEMS	UNITS	QUANTITY
HMA SURF. REM. BUTT JOINT	SQYD	138.33
HMA SURFACE REMOVAL 1/2"	SQYD	0
INCIDENTAL HMA SURFACING	TON	15.49

ITEMS	UNITS	QUANTITY
HMA SURF. REM. BUTT JOINT	SQYD	123.61
HMA SURFACE REMOVAL 1/2"	SQYD	0
INCIDENTAL HMA SURFACING	TON	13.84

ROSENBAUGH RD AND IL 78
Not to Scale



ITEMS	UNITS	QUANTITY
HMA SURF. REM. BUTT JOINT	SQYD	103.3
HMA SURFACE REMOVAL 1/2"	SQYD	1,896
INCIDENTAL HMA SURFACING	TON	167.94

ITEMS	UNITS	QUANTITY
HMA SURF. REM. BUTT JOINT	SQYD	410.83
HMA SURFACE REMOVAL 1/2"	SQYD	0
INCIDENTAL HMA SURFACING	TON	46.01

ROUTE 8 AND IL 78, GERBER RD AND IL 78
Not to Scale

LEGEND:

- HMA SURFACE REMOVAL BUTT JOINT
- HMA SURFACE REMOVAL 1 1/2"



REVISIONS	
NAME	DATE

ILLINOIS DEPARTMENT OF TRANSPORTATION

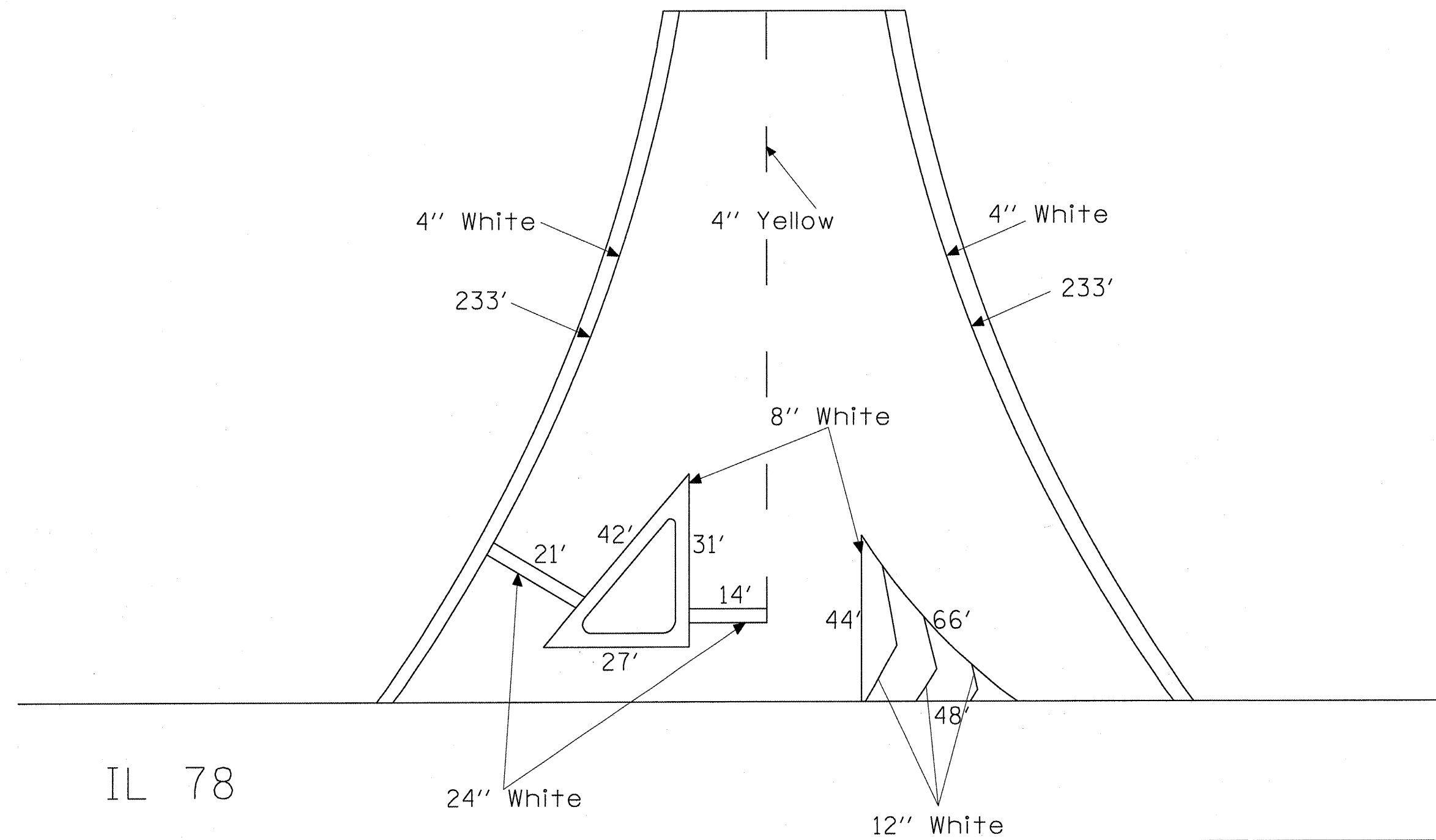
SIDERODS DETAILS

DRAWN BY _____
CHECKED BY _____
DATE _____

F.A.P. RTE.	SECTION	COUNTY	TOTAL SHEETS	SHEET NO.
22	131RS-4	PEORIA	17	12

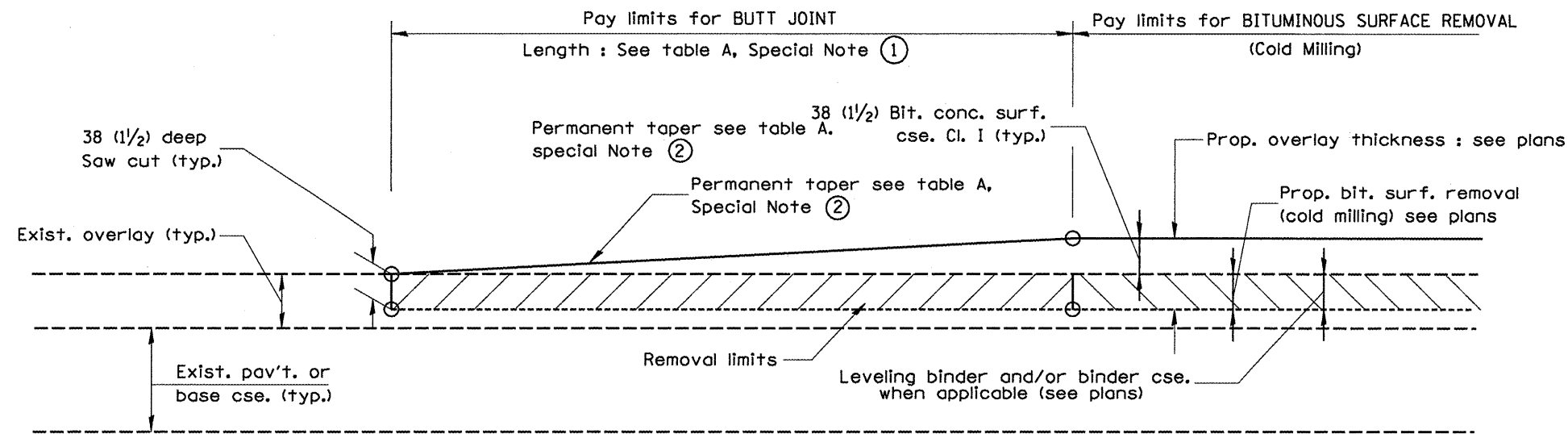
FED. ROAD DIST. NO. ILLINOIS FED. AID PROJECT

Route 8 Striping



ROUTE 8
PAVEMENT MARKING
DETAIL

F.A.P. RTE.	SECTION	COUNTY	TOTAL SHEETS	SHEET NO.
22	13IRS-4	PEORIA	17	13



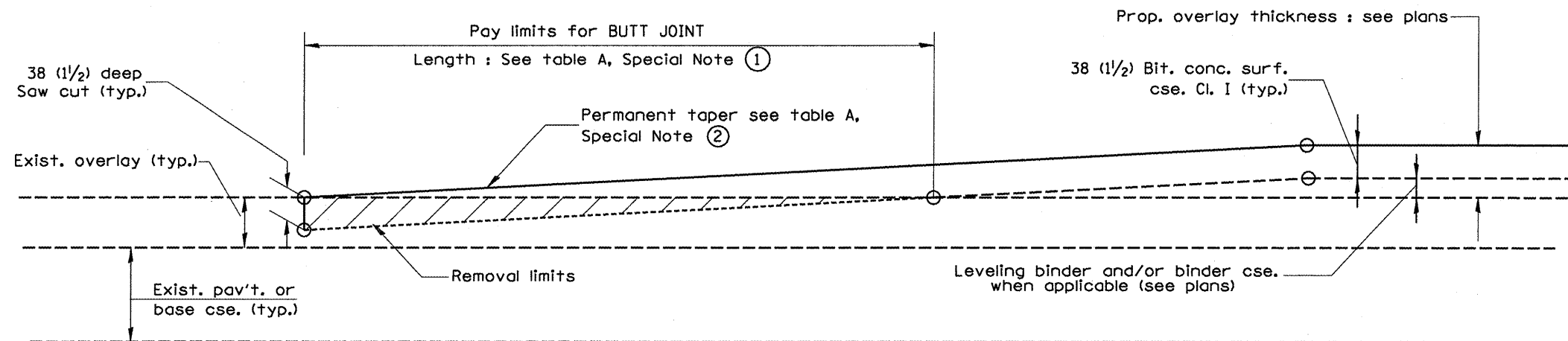
CASE 1 : WITH BITUMINOUS SURFACE REMOVAL (COLD MILLING)

TABLE A
(LENGTHS AND TAPER RATES)

SPECIAL NOTE NUMBER	ELEMENT	MAINLINE INTERSTATES & 4-LANE EXPRESSWAYS	ALL OTHERS
①	LENGTH OF BUTT JOINT	18.0 m(60')	9.0 m(30')
②	PERMANENT TAPER RATE	1:480	1:240
③	TEMPORARY RAMP TAPER RATE	1:80	1:40
④	TEMPORARY RAMP LENGTH	3.0 m(10')	1.5 m(5')
⑤	LENGTH OF BUTT JOINT	3.0 m(10')	3.0 m(10')

GENERAL NOTES

1. The work shall be done in accordance with Article 406.18 and the Special Provision for Butt Joints.
2. The pavement surface to be removed may be either bituminous or P.C. concrete. The work shall be performed in accordance with Article 440.03 and the Special Provisions for Butt Joints.
3. The saw cut joints shall be primed just prior to the placing of bituminous material. The work will be in accordance with the applicable portions of Article 406.06.



CASE 2 : NO BITUMINOUS SURFACE REMOVAL (COLD MILLING)

All dimensions are in millimeters (inches) unless otherwise noted.

ILLINOIS DEPARTMENT OF TRANSPORTATION
DISTRICT CADD STANDARD

BUTT JOINTS

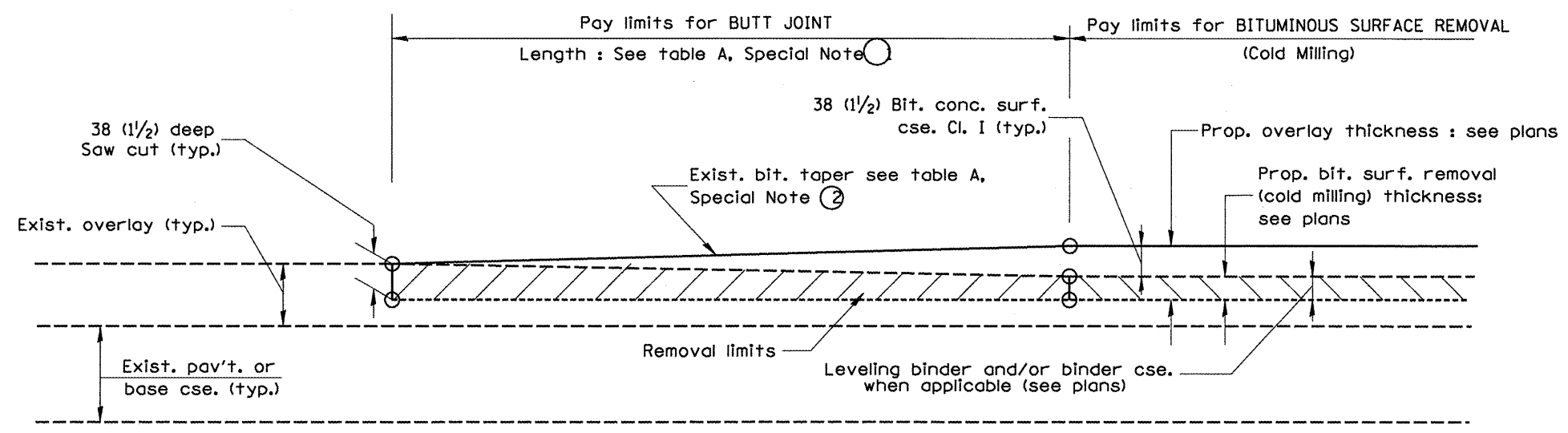
CADD STD NO. 406101-D4 SHEET 1 OF 3
SCALE: NOT DRAWN TO SCALE DRAWN BY CADD
DATE **DATE** CHECKED BY

DATE	REVISIONS	BY
1-1-97	RENUM. C-23.01, NEW REVISION BOX	T.P.
4-1-97	CORRECTION TO DEPTH	J.A.
9-15-05	REVISED DESIGNER NOTE	M.M.A.

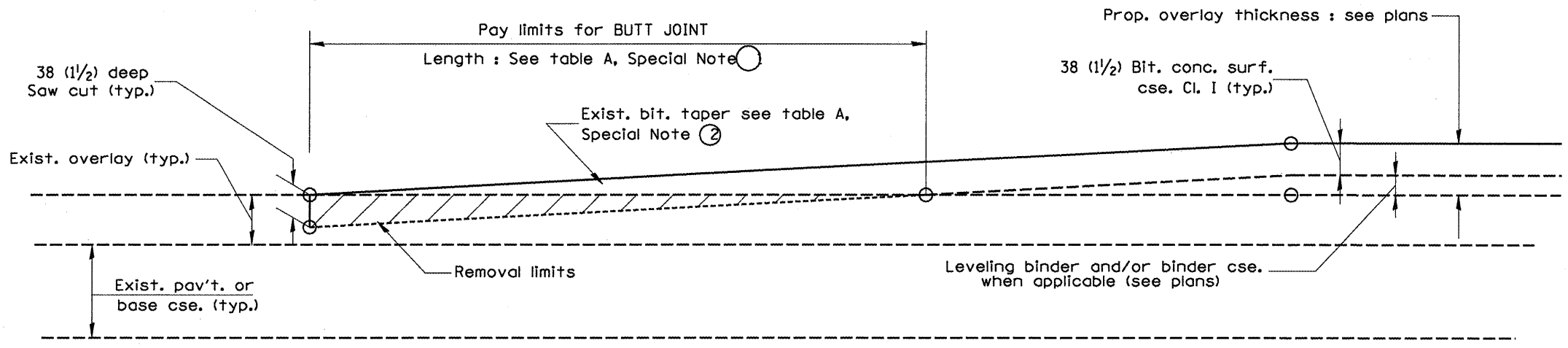
DESIGNER NOTES:
1. Include District Special Provision for Butt Joints & for Bituminous Surface Removal (Cold Milling).
2. The butt joints pay item includes the saw cut & temporary ramp. Payment for the Butt Joint applies whether or not the project features Bituminous Surface Removal (Cold Milling).

DATE

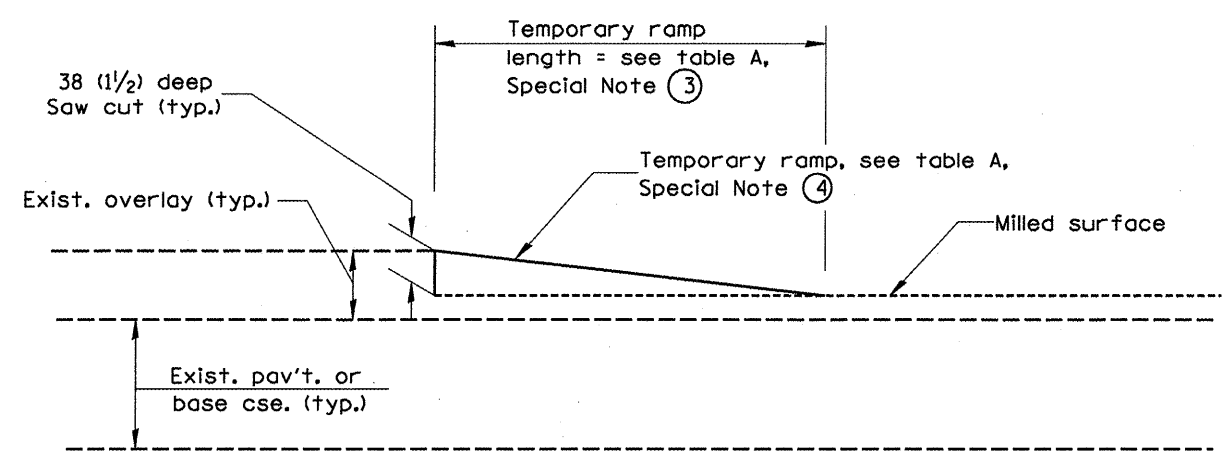
F.A.P. RTE.	SECTION	COUNTY	TOTAL SHEETS	SHEET NO.
22	13IRS-4	PEORIA	17	14



**CASE 3 : WITH BITUMINOUS SURFACE REMOVAL (COLD MILLING)
TIE-IN TO EXISTING BITUMINOUS TAPER**



**CASE 4 : NO BITUMINOUS SURFACE REMOVAL (COLD MILLING)
TIE-IN TO EXISTING BITUMINOUS TAPER**



DETAIL TEMPORARY RAMP

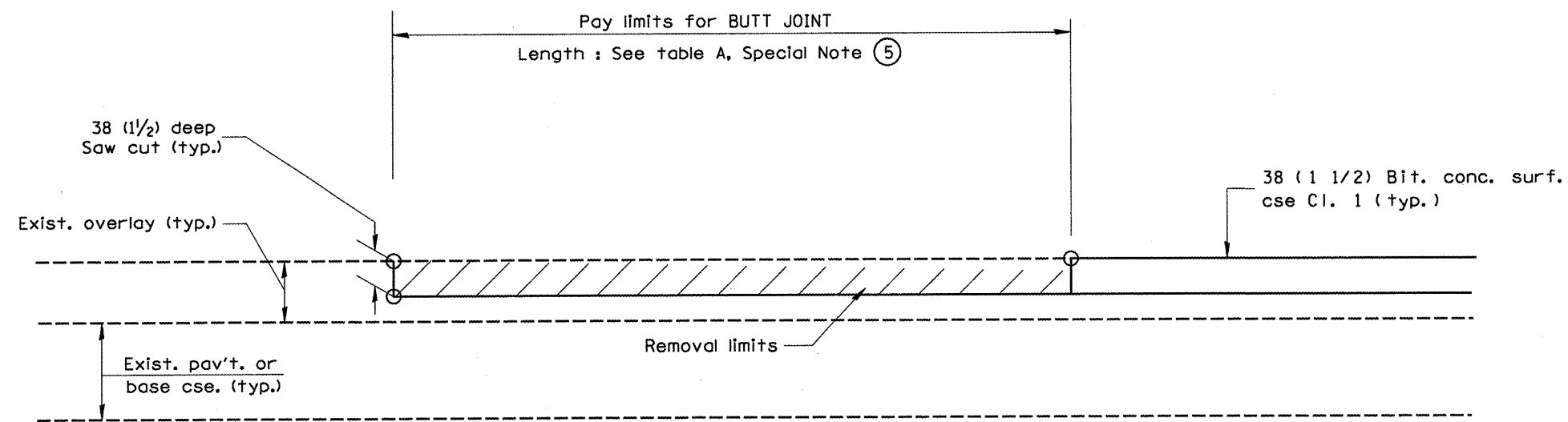
All dimensions are in millimeters (inches) unless otherwise noted.

ILLINOIS DEPARTMENT OF TRANSPORTATION
DISTRICT CADD STANDARD

BUTT JOINTS
CADD STD NO. 406101-D4 SHEET 2 OF 3
DRAWN BY CADD
SCALE: NOT DRAWN TO SCALE
CHECKED BY

\$\$\$DATE\$\$\$

CONTRACT NO. 68634				
F.A.P. RTE.	SECTION	COUNTY	TOTAL SHEETS	SHEET NO.
22	131RS-4	PEORIA	17	15



CASE 5 : WITH BITUMINOUS SURFACE REMOVAL (COLD MILLING)
TIE-IN TO EXISTING BITUMINOUS TAPER

All dimensions are in millimeters
(inches) unless otherwise noted.

ILLINOIS DEPARTMENT OF TRANSPORTATION
DISTRICT CADD STANDARD

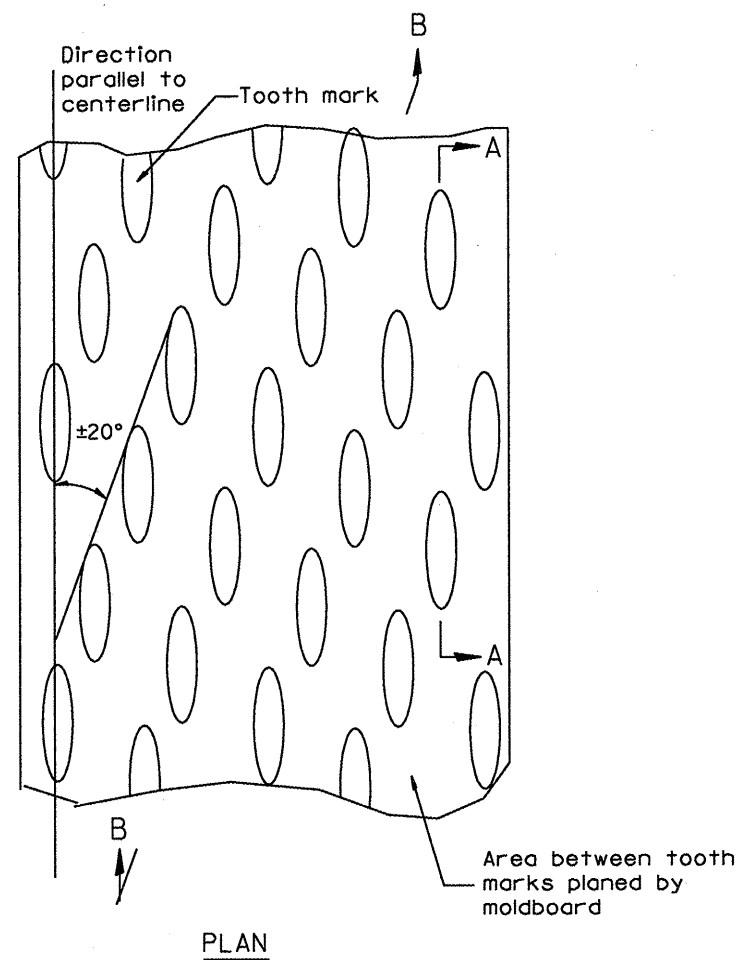
BUTT JOINTS

CADD STD NO. 406101-D4 SHEET 3 OF 3
DRAWN BY CADD
SCALE: NOT DRAWN TO SCALE
CHECKED BY

406101-D4 (3)

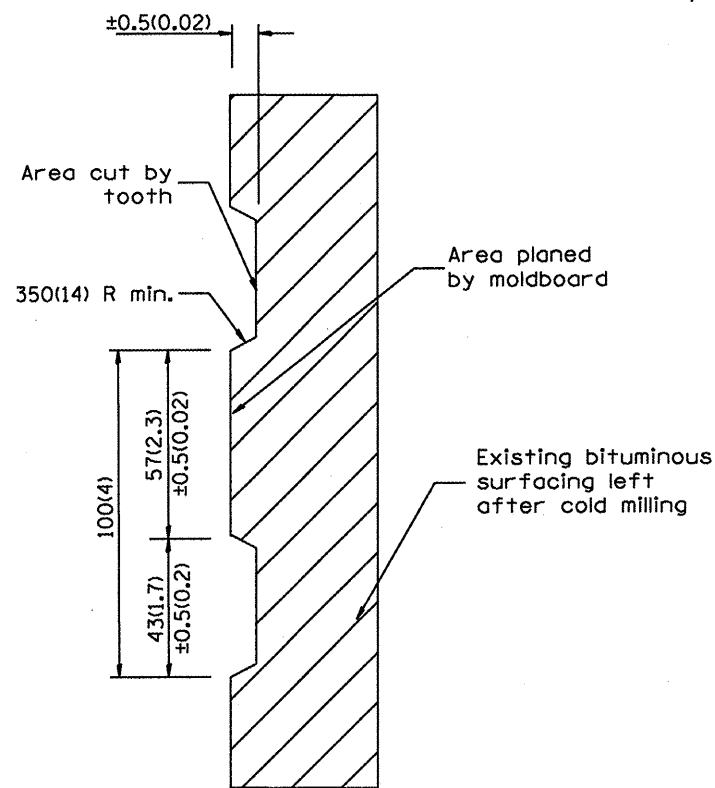
\$\$\$DATE\$\$\$

F.A.P. RTE.	SECTION	COUNTY	TOTAL SHEETS	SHEET NO.
22	131RS-4	PEORIA	17	16

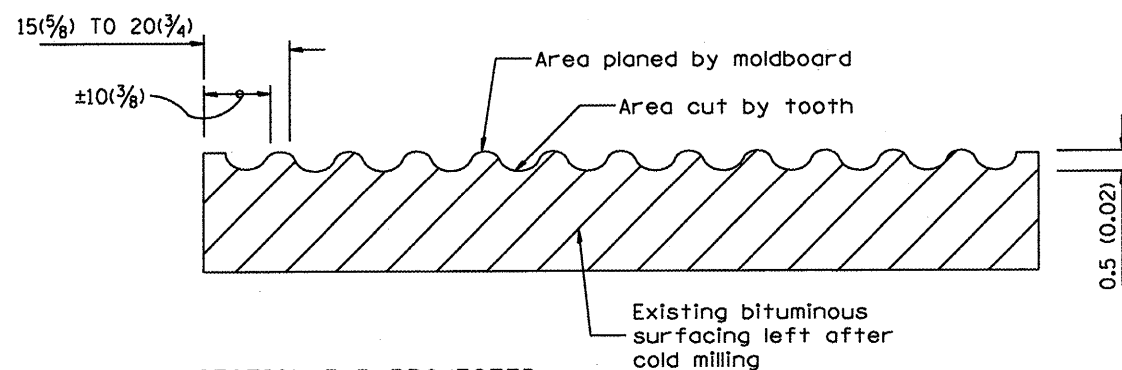


General notes:

1. Coldmilling shall consist of two processes: Cutting with carbide teeth mounted on a rotating drum, and planing with a moldboard mounted immediately behind the cutting drum.
2. Other similar patterns will be acceptable if they consist of a smooth, flat, planed surface interspersed with a pattern of discontinuous longitudinal striations.



SECTION A-A



SECTION B-B PROJECTED
PERPENDICULAR TO CENTERLINE

All dimensions are in millimeters (inches) unless otherwise noted.

ILLINOIS DEPARTMENT OF TRANSPORTATION
DISTRICT CADD STANDARD

DATE	REVISIONS	BY
1- 1-97	RENUM. C-104.01, NEW REVISION BOX	T. P.
4-20-98	REMOVED MILLING DETAIL FROM STD.	J. A.
9-08-98	CORRECT NOTE LEADER PLACEMENT	R. W.

BITUMINOUS SURFACE REMOVAL
(COLD MILLING)

CADD STD NO. 440001-D4

SCALE: NOT DRAWN TO SCALE
DATE: **DATE**
DRAWN BY: CADD
CHECKED BY:

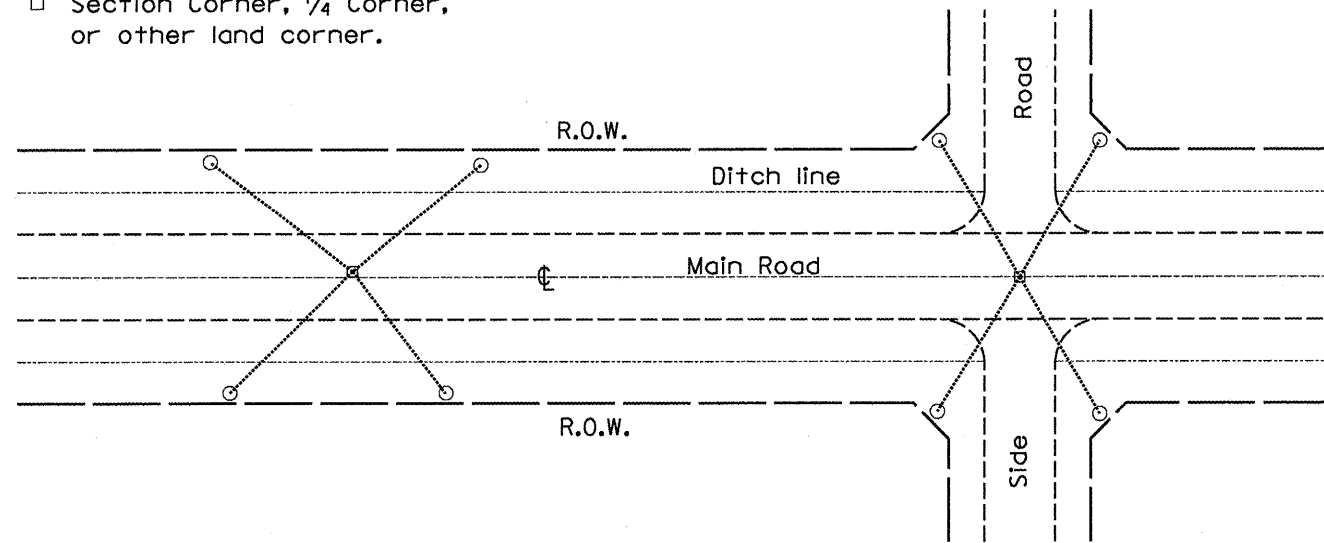
DESIGNER NOTE
1. INCLUDE DISTRICT SPECIAL PROVISION, IF APPLICABLE.

DATE

ROUTE		SECTION	COUNTY	TOTAL SHEETS	SHEET NO.
F.A.P.	22				
MKD.	IL 78	131RS-4	PEORIA	17	17

PERMANENT SURVEY TIES

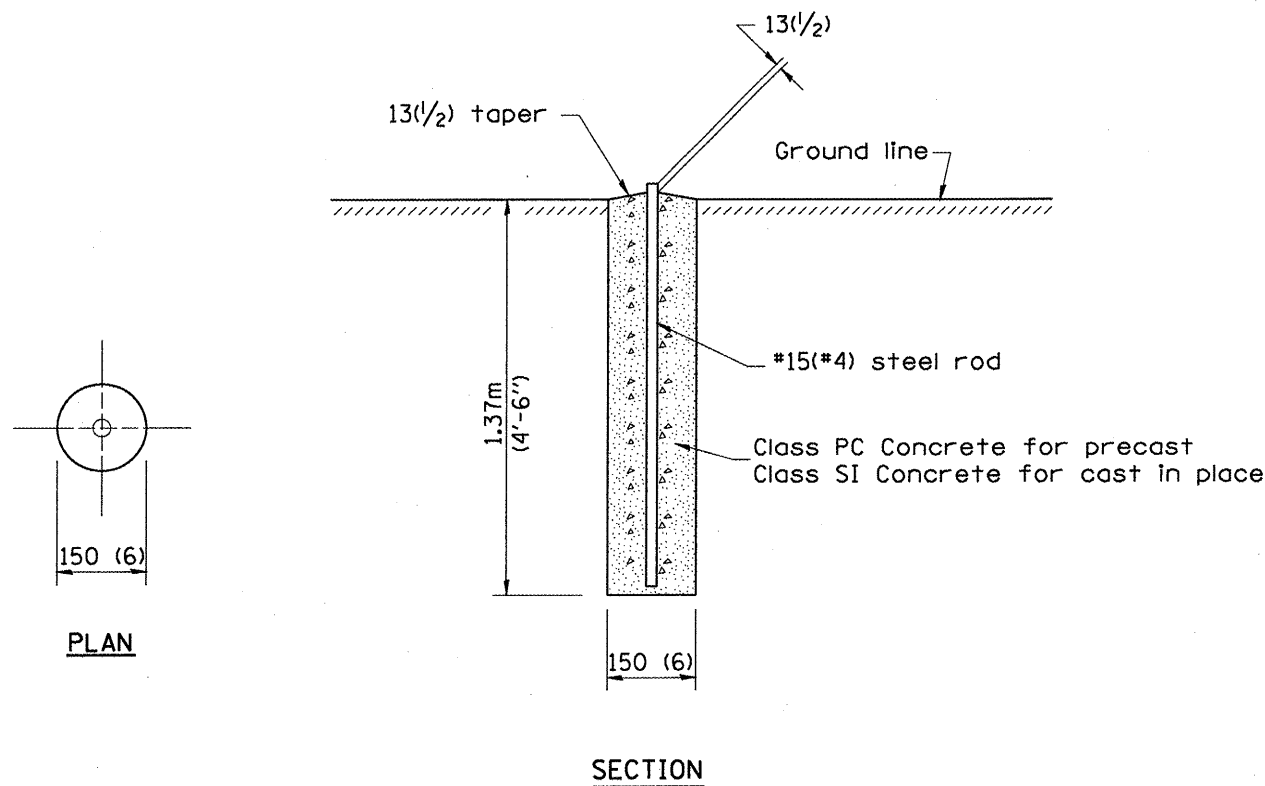
- Permanent Survey Tie
- Section Corner, 1/4 Corner, or other land corner.



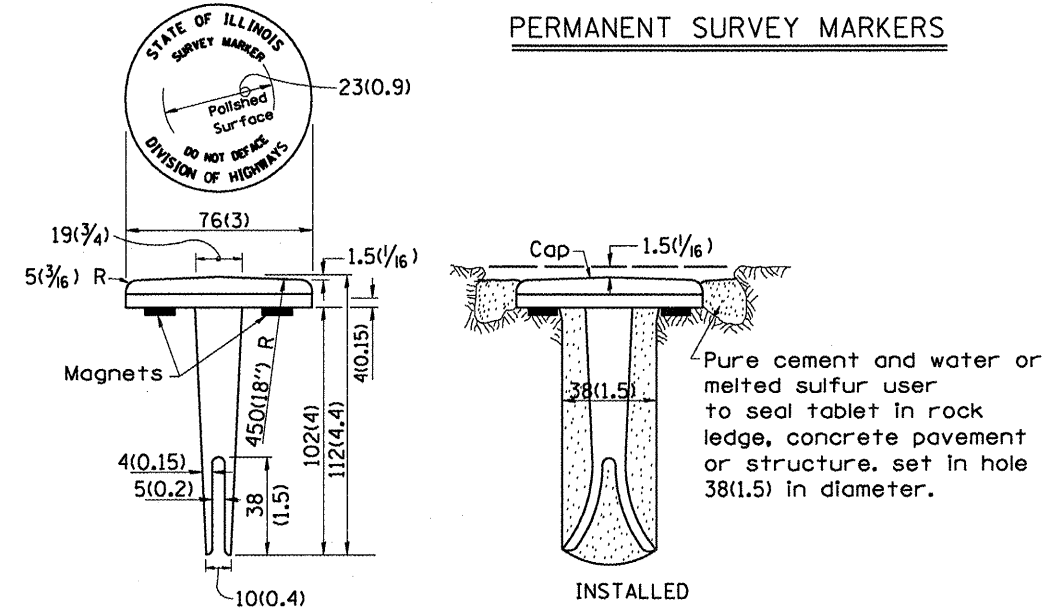
TYPICAL APPLICATION

GENERAL NOTES

- The marker shall be cast in place of Class SI Concrete.
- Tie marker shall be installed after the final seeding has been completed unless otherwise specified by the Engineer.
- The tie distances to the section corner shall be measured and recorded by the IDOT Chief of Surveys.



PERMANENT SURVEY MARKERS

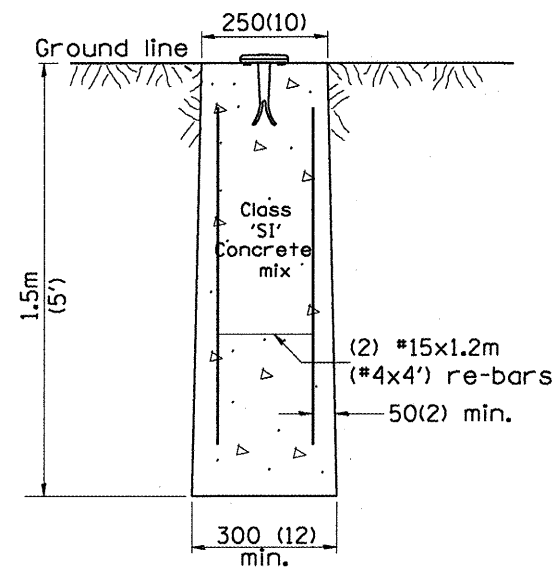


BRONZE TABLET - No Scale TYPE I

GENERAL NOTES

- All type II markers shall be cast in place, and precast markers will not be allowed.
- Two permanent magnets, each having a diameter of 19 (3/4) and a thickness of 6 (1/4), or equivalent, shall be attached to the underside of the tablet with an approved epoxy bonding agent.
- The location of the markers shall be in accordance with the plans in general, the markers will be placed at the P.T.'s and P.C.'s of horizontal curves and spaces along the tangents in a way that a minimum of two markers are always inter-visible, and not to exceed 300m(1000').
- The markers shall be placed under the direction of the Engineer and shall be installed in a workmanlike manner in order that there will be no further settlement or horizontal shifting. The monuments shall be placed in a way that the survey point will fall within the portion of the plaque provided for that purpose.
- The project designation, the centerline station, the survey point, and the elevation shall be permanently marked by the use of metal dies after marker has been installed.

All dimensions are in millimeters (inches) unless otherwise noted.



MARKER CAST IN PLACE TYPE II

DATE	REVISIONS	BY
1-1-97	RENUM. 0-3.01, NEW REVISION BOX	T.P.
	ADD DESIGNER NOTE, REVISED TITLE BOX	
7-7-98	ADD DESIGNER NOTE	J.A.
5-24-06	REMOVED GEN. NOTE UNDER TIES	M.A.

ILLINOIS DEPARTMENT OF TRANSPORTATION	
DISTRICT CADD STANDARD	
PERMANENT SURVEY TIE	
&	
PERMANENT SURVEY MARKERS TY.I - TY.II	
CADD STD. NO. 667101-D4	
SCALE: NOT DRAWN TO SCALE	DRAWN BY: CADD
DATE: **DATE**	CHECKED BY:

DESIGNER NOTE: 1. ADD DISTRICT SPECIAL PROVISION. 2. MODIFIES STATE STD 667101 TO CALL FOR "BRONZE" TABLET.

\$\$\$DATE\$\$\$