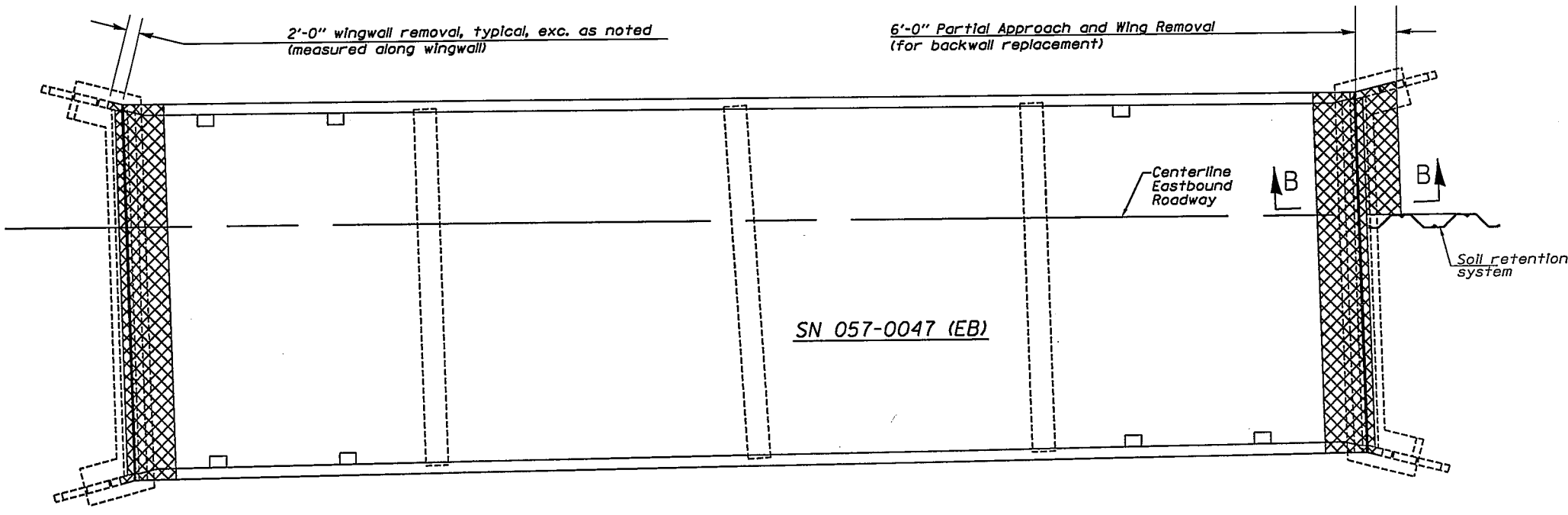
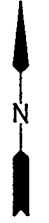
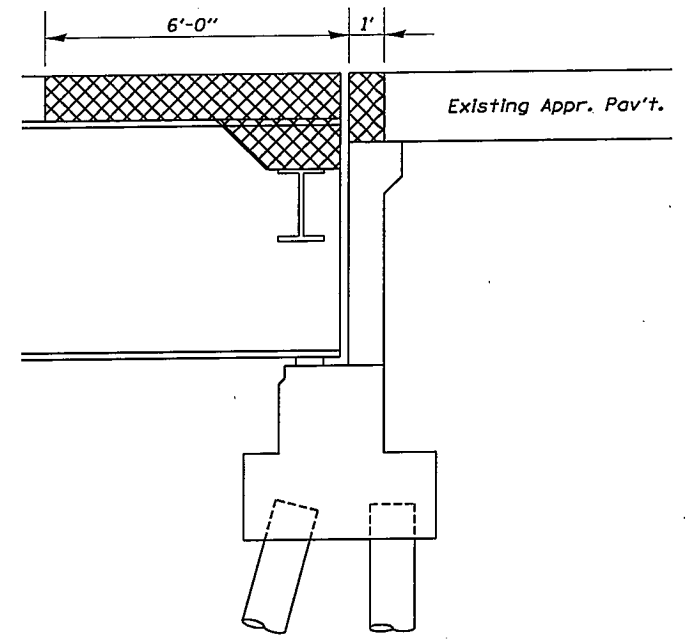


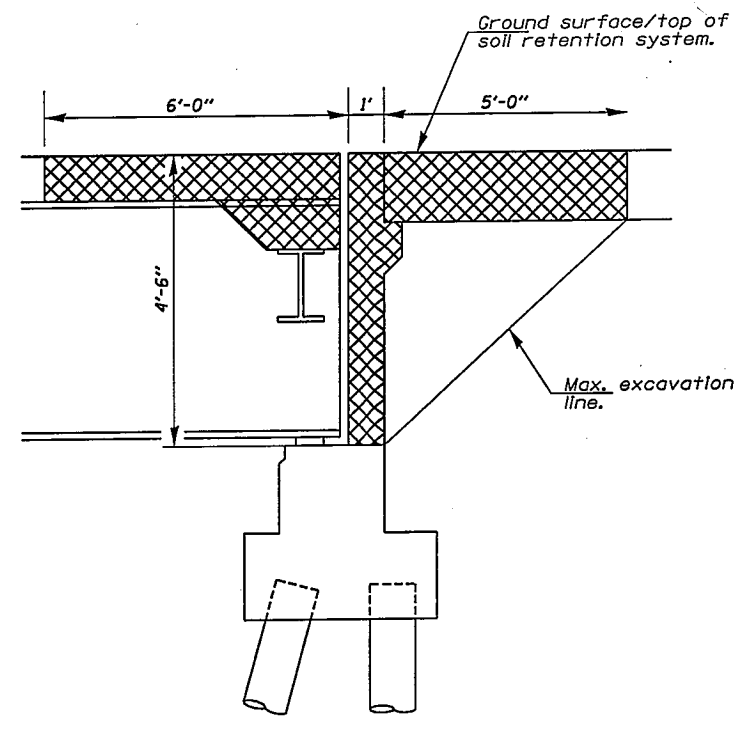
Cost of soil retention system and excavation is included with Concrete Removal. Cost of backfilling is included with Concrete Structures.



Plan View: Concrete Removal



Section A-A  
Typical for joint replacement and shear stud connectors



Section B-B  
Typical for joint and backwall replacement and shear stud connectors

FILE NAME =	USER NAME = #USER#	DESIGNED - GMS	REVISED -
#FILE#		DRAWN - GMS	REVISED -
	PLOT SCALE = #SCALE#	CHECKED -	REVISED -
	PLOT DATE = #DATE#	DATE -	REVISED -

STATE OF ILLINOIS  
DEPARTMENT OF TRANSPORTATION

CONCRETE REMOVAL PLAN  
S.N. 057-0047 & 057-0048

SCALE: SHEET NO. 3A OF 11A SHEETS STA. TO STA.

F.A.I. RTE.	SECTION	COUNTY	TOTAL SHEETS	SHEET NO.
74	57-2011&157-4.5.61R-3	MCLEAN	160	106
FED. ROAD DIST. NO. [ILLINOIS] FED. AID PROJECT			CONTRACT NO. 70505	