

F.A.I. RTE.	SECTION	COUNTY	TOTAL SHEETS	SHEET NO.
74	(74,10-4,1)RS-1	PIATT & CHAMPAIGN	69	1A

LOCATION MAP

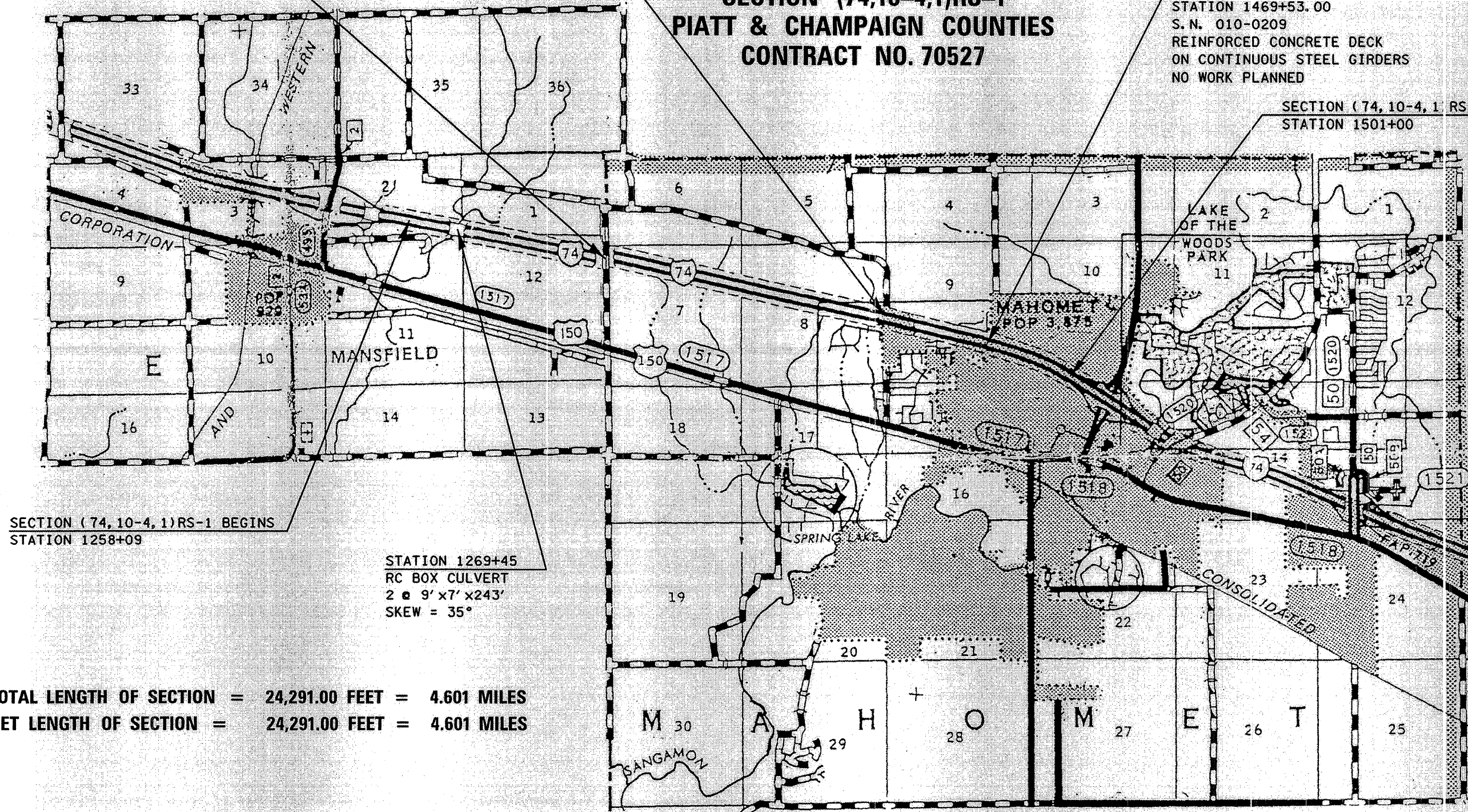
FAI ROUTE 74 SECTION (74,10-4,1)RS-1 PIATT & CHAMPAIGN COUNTIES CONTRACT NO. 70527

OVERHEAD STRUCTURE
STATION 1324+77.33
S.N. 010-0207
REINFORCED CONCRETE DECK
ON CONTINUOUS STEEL GIRDERS
NO WORK PLANNED

OVERHEAD STRUCTURE
STATION 1429+10.80
S.N. 010-0208
REINFORCED CONCRETE DECK
ON CONTINUOUS STEEL GIRDERS
NO WORK PLANNED

OVERHEAD STRUCTURE
STATION 1469+53.00
S.N. 010-0209
REINFORCED CONCRETE DECK
ON CONTINUOUS STEEL GIRDERS
NO WORK PLANNED

SECTION (74,10-4,1)RS-1 ENDS
STATION 1501+00



SECTION (74,10-4,1)RS-1 BEGINS
STATION 1258+09

STATION 1269+45
RC BOX CULVERT
2 @ 9' x 7' x 243'
SKEW = 35°

TOTAL LENGTH OF SECTION = 24,291.00 FEET = 4.601 MILES
NET LENGTH OF SECTION = 24,291.00 FEET = 4.601 MILES

