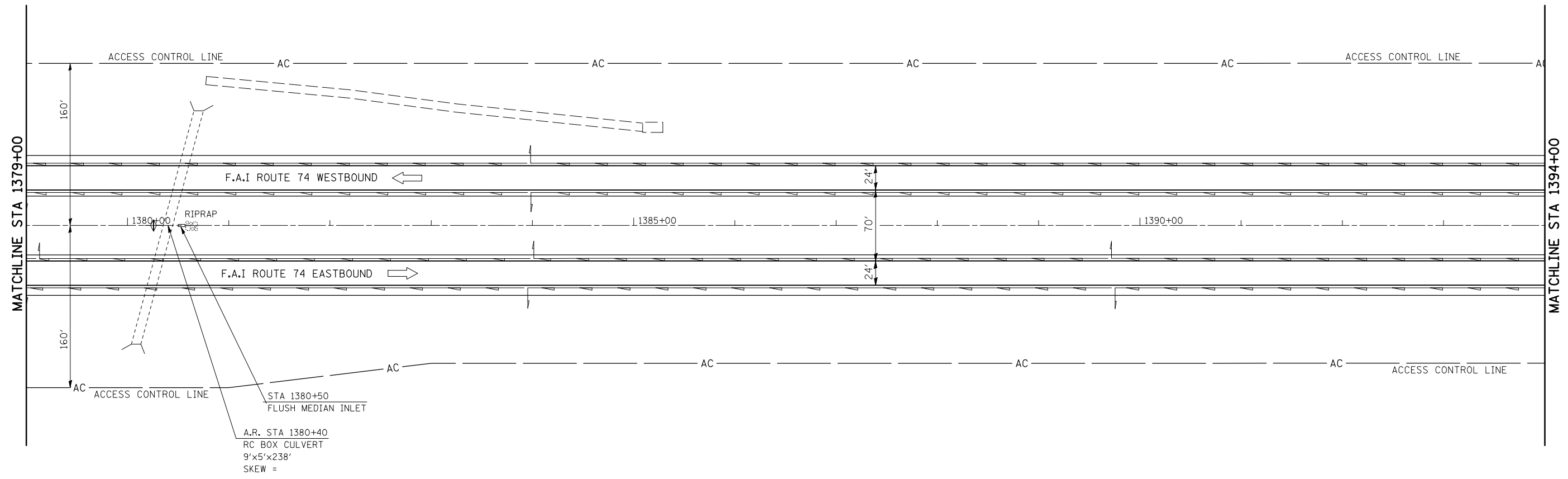
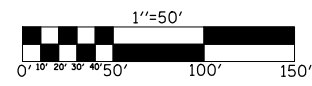


F.A.I. RTE.	SECTION	COUNTY	TOTAL SHEETS	SHEET NO.
74	(74,10-4,1)RS-1	•	69	24
STA. 1379+00		TO STA. 1394+00		
FED. ROAD DIST. NO. _		ILLINOIS	FED. AID PROJECT	
• PIATT & CHAMPAIGN				



PLOT DATE = 2/3/2009  
 FILE NAME = c:\p\... \SHERER\JM\dm8888\70527\REFERENCE.DGN  
 PLOT SCALE = 1/8"=50' / IN.  
 USER NAME = sherer, jm



ILLINOIS DEPARTMENT OF TRANSPORTATION  
**PLAN VIEW**  
 F.A.I. ROUTE 74  
 SECTION (74,10-4,1)RS-1  
 PIATT & CHAMPAIGN COUNTIES

SCALE: 1" = 50'  
 DATE: 04/30/07

DRAWN BY: JRP  
 CHECKED BY: