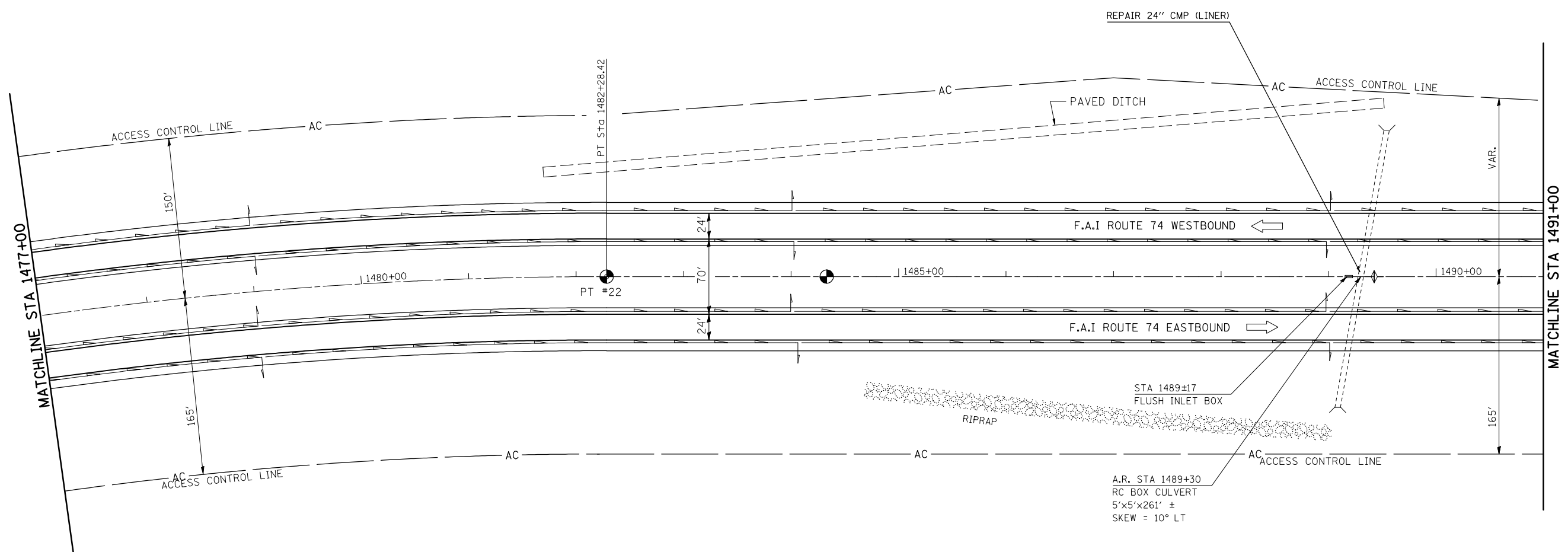
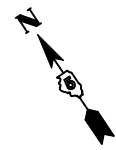
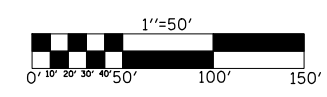


F.A.I. RTE.	SECTION	COUNTY	TOTAL SHEETS	SHEET NO.
74	(74,10-4,1)RS-1	•	69	31
STA. 1477+00		TO STA. 1491+00		
FED. ROAD DIST. NO.		ILLINOIS	FED. AID PROJECT	
• PIATT & CHAMPAIGN				



PLOT DATE = 2/4/2009
 FILE NAME = c:\p\work\p\70527\reference.dgn
 PLOT SCALE = 1/8"=50' / IN.
 USER NAME = sherer,jm



ILLINOIS DEPARTMENT OF TRANSPORTATION

PLAN VIEW

F.A.I. ROUTE 74
SECTION (74,10-4,1)RS-1
PIATT & CHAMPAIGN COUNTIES

SCALE: 1" = 50'
DATE: 04/30/07

DRAWN BY: JRP
CHECKED BY: