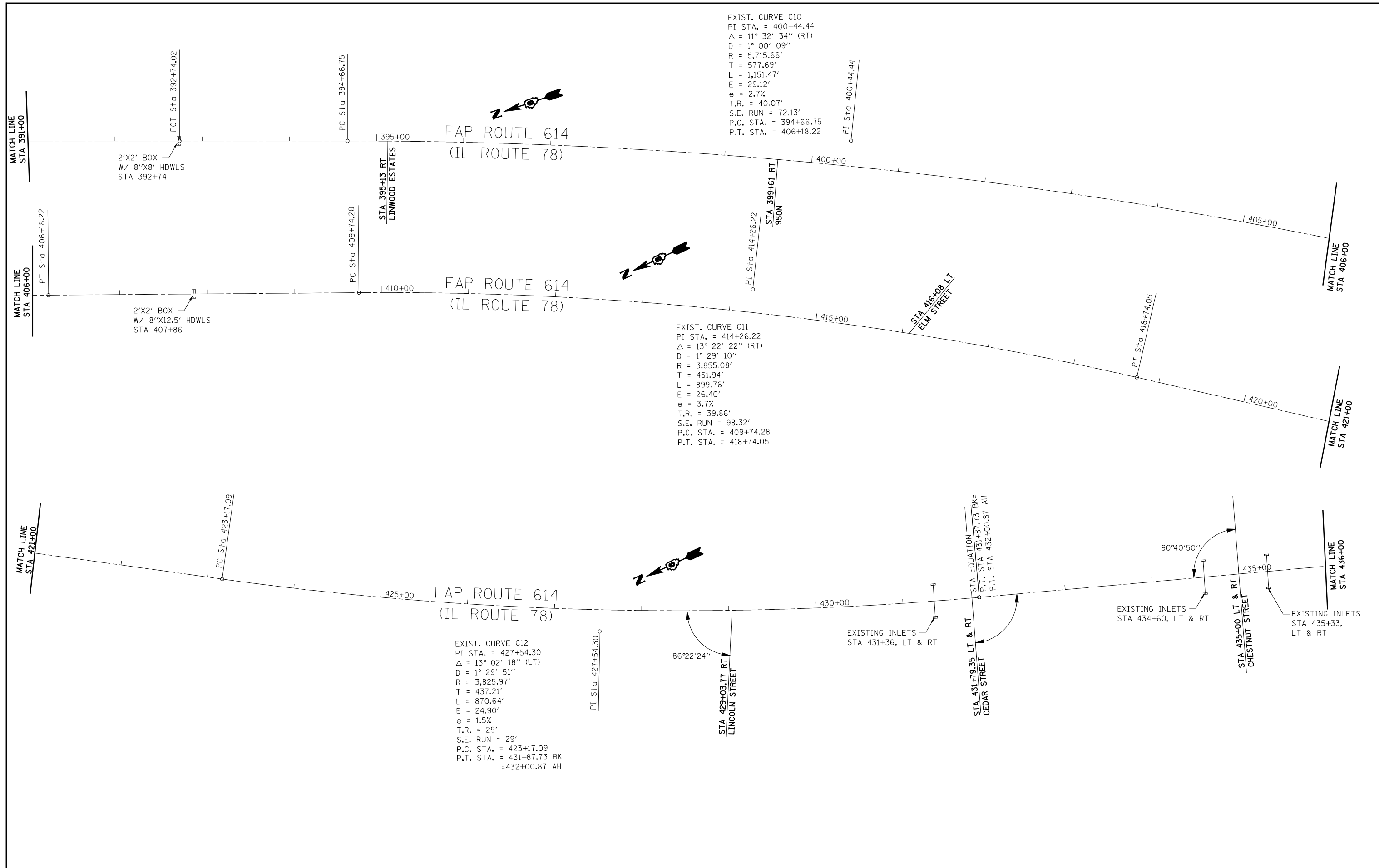


EXIST. CURVE C10
 PI STA. = 400+44.44
 Δ = 11° 32' 34" (RT)
 D = 1° 00' 09"
 R = 5,715.66'
 T = 577.69'
 L = 1,151.47'
 E = 29.12'
 e = 2.7%
 T.R. = 40.07'
 S.E. RUN = 72.13'
 P.C. STA. = 394+66.75
 P.T. STA. = 406+18.22

EXIST. CURVE C11
 PI STA. = 414+26.22
 Δ = 13° 22' 22" (RT)
 D = 1° 29' 10"
 R = 3,855.08'
 T = 451.94'
 L = 899.76'
 E = 26.40'
 e = 3.7%
 T.R. = 39.86'
 S.E. RUN = 98.32'
 P.C. STA. = 409+74.28
 P.T. STA. = 418+74.05

EXIST. CURVE C12
 PI STA. = 427+54.30
 Δ = 13° 02' 18" (LT)
 D = 1° 29' 51"
 R = 3,825.97'
 T = 437.21'
 L = 870.64'
 E = 24.90'
 e = 1.5%
 T.R. = 29'
 S.E. RUN = 29'
 P.C. STA. = 423+17.09
 P.T. STA. = 431+87.73 BK
 = 432+00.87 AH



FILE NAME =	USER NAME = laughlinr1	DESIGNED -	REVISED -
es:\pwork\pwork\LAUGHLINRL\dms26347\	ignment.dgn	DRAWN -	REVISED -
	PLOT SCALE = 100.0000' / IN.	CHECKED -	REVISED -
	PLOT DATE = Feb-06-2009 02:37:16PM	DATE -	REVISED -

**STATE OF ILLINOIS
 DEPARTMENT OF TRANSPORTATION**

ALIGNMENT			
SCALE: 1" = 50'	SHEET NO.	OF SHEETS	STA. TO STA.

F.A.P. RTE.	SECTION	COUNTY	TOTAL SHEETS	SHEET NO.
614	(141,143)RS-5	MASON	40	29
CONTRACT NO. 72835				
FED. ROAD DIST. NO. ILLINOIS FED. AID PROJECT				