

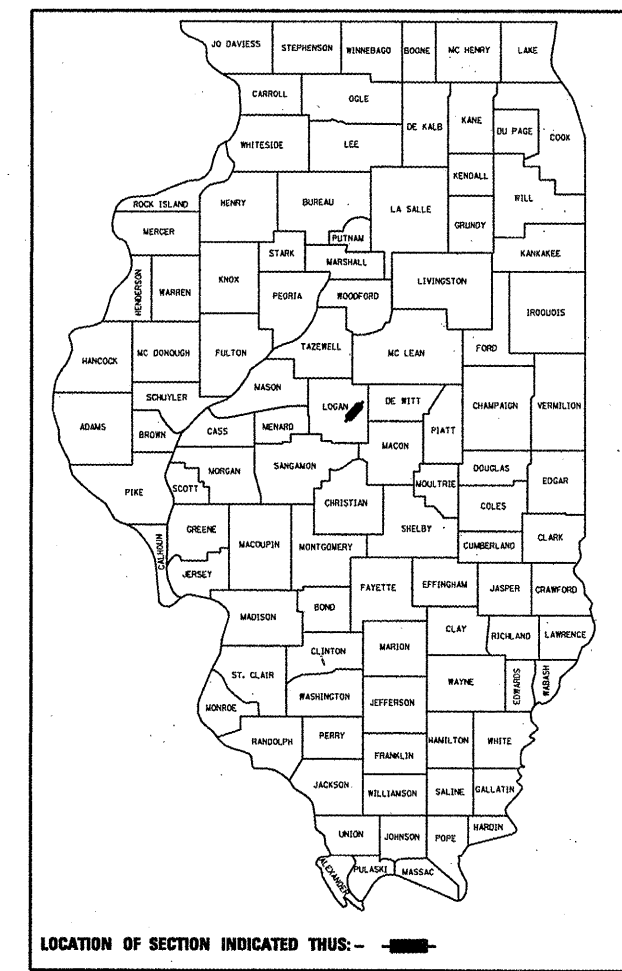
F.A.P. RTE.	SECTION	COUNTY	TOTAL SHEETS	SHEET NO.
71		LOGAN	14	1

• 10(RS-2); 11(RS-2)

STATE OF ILLINOIS  
DEPARTMENT OF TRANSPORTATION  
DIVISION OF HIGHWAYS  
**PROPOSED  
HIGHWAY PLANS**

FAP ROUTE 71 (IL 54)  
SECTION 10(RS-2); 11(RS-2)  
PROJECT ESP - 0071 (116)  
LOGAN COUNTY  
C-96-556-07

D-96-560-03

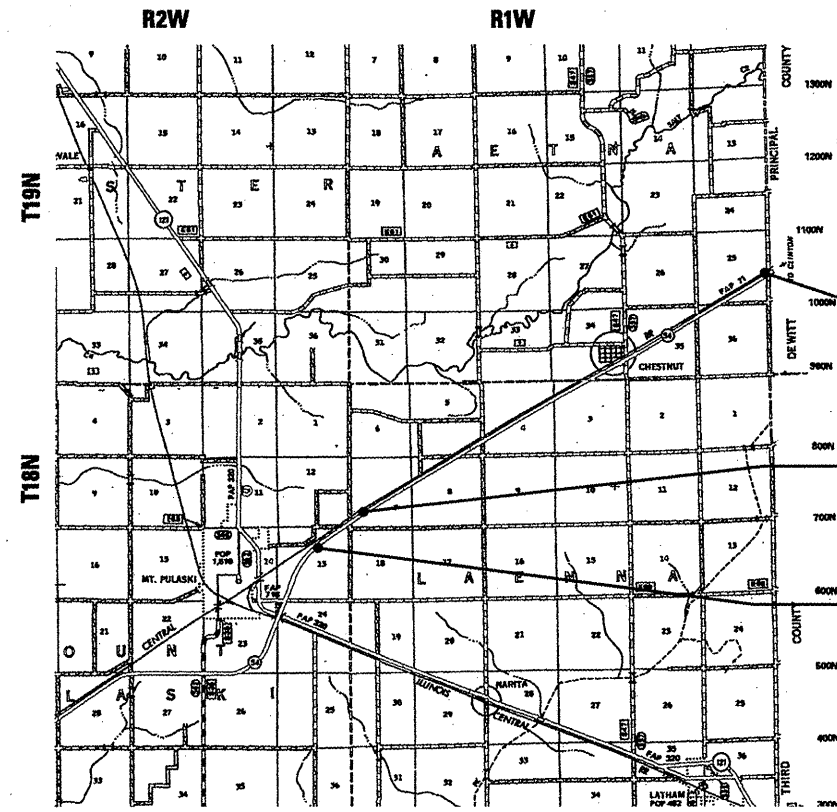


INDEX OF SHEETS

- 1 COVER SHEET
- 2 GENERAL NOTES
- 3-4 SUMMARY OF QUANTITIES
- 5 SCHEDULE OF QUANTITIES
- 6 TYPICAL SECTIONS
- 7-8 ALIGNMENT SHEETS
- 9 SUPERELEVATION TRANSITION DETAILS
- 10 BUTT-JOINT DETAILS
- 11-14 SIDE ROAD AND ENTRANCE DETAILS

LIST OF STANDARDS

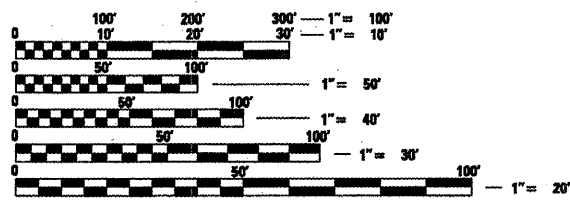
- |           |           |
|-----------|-----------|
| 000001-05 | 701301-03 |
| 442201-03 | 701306-02 |
| 701001-02 | 701311-03 |
| 701006-03 | 701901-01 |
| 701011-02 | 780001-02 |
| 701201-03 | 781001-03 |



END PPP PROJECT  
STA. 450 + 44 ± [R2]

STATION EQUATION  
118 + 26.00 [R1] (BK) =  
118 + 28.90 [R2] (AH)

BEGIN PPP PROJECT  
STA. 82 + 38.5 ± [R1]



FULL SIZE PLANS HAVE BEEN PREPARED USING STANDARD ENGINEERING SCALES. REDUCED SIZED PLANS WILL NOT CONFORM TO STANDARD SCALES. IN MAKING MEASUREMENTS ON REDUCED PLANS, THE ABOVE SCALES MAY BE USED.

J.U.L.I.E.  
JOINT UTILITY LOCATION INFORMATION FOR EXCAVATION  
1-800-892-0123

APPROXIMATE SCALE: 0 2 4 MILES  
TOTAL LENGTH OF PROJECT = 36,802.60 = 6.97 MILES  
HIGHWAY CLASSIFICATION = MINOR ARTERIAL  
ADT = 1630 (2007) ADT = 1970 (2027)  
87.5% PV3.0% SU9.5% MU

STATE OF ILLINOIS  
DEPARTMENT OF TRANSPORTATION  
DIVISION OF HIGHWAYS

SUBMITTED January 23, 2009  
Roger Z. Smith  
DEPUTY DIRECTOR OF HIGHWAYS, REGION ENGINEER  
March 13, 2009  
Charles G. Ingersoll  
ENGINEER OF DESIGN AND ENVIRONMENT  
March 13, 2009  
Christine M. Reed  
DIRECTOR OF HIGHWAYS, CHIEF ENGINEER

**PRINTED BY THE AUTHORITY  
OF THE STATE OF ILLINOIS**

PROJECT ENGINEER: JOHN NEGANGARD (217) 782-6890  
SQUAD LEADER: MARK DUST (217) 785-0587

CONTRACT NO. 72844