

F.A.P. RTE.	SECTION	COUNTY	TOTAL SHEETS	SHEET NO.
67	(6X-1)B-2	CASS	71	1
FED. ROAD DIST. NO.	ILLINOIS	CONTRACT NO.	72875	

STATE OF ILLINOIS
DEPARTMENT OF TRANSPORTATION
DIVISION OF HIGHWAYS
**PROPOSED
HIGHWAY PLANS**

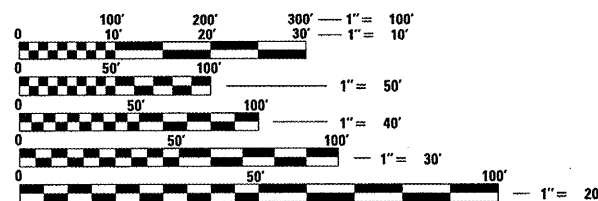
FAP ROUTE 67 (IL 125)
SECTION (6X-1)B-2
PROJECT: ESP-0067(080)
CASS COUNTY
C-96-507-07

INDEX OF SHEETS

1	TITLE SHEET
2	GENERAL NOTES
3 - 4	SUMMARY OF QUANTITIES
5	QUANTITY SCHEDULES (STA. 76+61) S.N. 009-7000
6	QUANTITY SCHEDULES S.N. 009-2506
7	QUANTITY SCHEDULES S.N. 009-2507
8 - 9	DETAILS & TYPICAL ROADWAY SECTIONS S.N. 009-2506
10 - 11	DETAILS & TYPICAL ROADWAY SECTIONS S.N. 009-2507
12 - 14	STAGE CONSTRUCTION TRAFFIC DETAILS S.N. 009-2506
15 - 17	STAGE CONSTRUCTION TRAFFIC DETAILS S.N. 009-2507
18	TRAFFIC SIGNAL DETAILS S.N. 009-7000
19	PLAN & PROFILE (STA. 76+61) S.N. 009-7000
20	PLAN & PROFILE S.N. 009-2506
21	PLAN & PROFILE S.N. 009-2507
22	ENTRANCE DETAILS & RIPRAP LAYOUT S.N. 009-2506
23	ENTRANCE DETAILS S.N. 009-2507
24 - 27	STORM WATER POLLUTION PREVENTION PLAN
28	EROSION CONTROL PLAN S.N. 009-2506
29	EROSION CONTROL PLAN S.N. 009-2507
30 - 34	CULVERT DETAILS (STA. 76+61) S.N. 009-7000
35 - 43	STRUCTURE PLANS S.N. 009-2506
44 - 54	STRUCTURE PLANS S.N. 009-2507
55 - 57	CROSS SECTIONS (STA. 76+61) S.N. 009-7000
58 - 64	CROSS SECTIONS S.N. 009-2506
65 - 71	CROSS SECTIONS S.N. 009-2507
	STANDARDS

LIST OF ILLINOIS DOT STANDARDS

000001-05	701301-03
280001-04	701311-03
482001-02	701321-10
515001-03	701326-03
542401-01	701901-01
666001-01	704001-05
701006-03	780001-02
701011-02	781001-03
701201-03	BLR 24-2
701301-02	

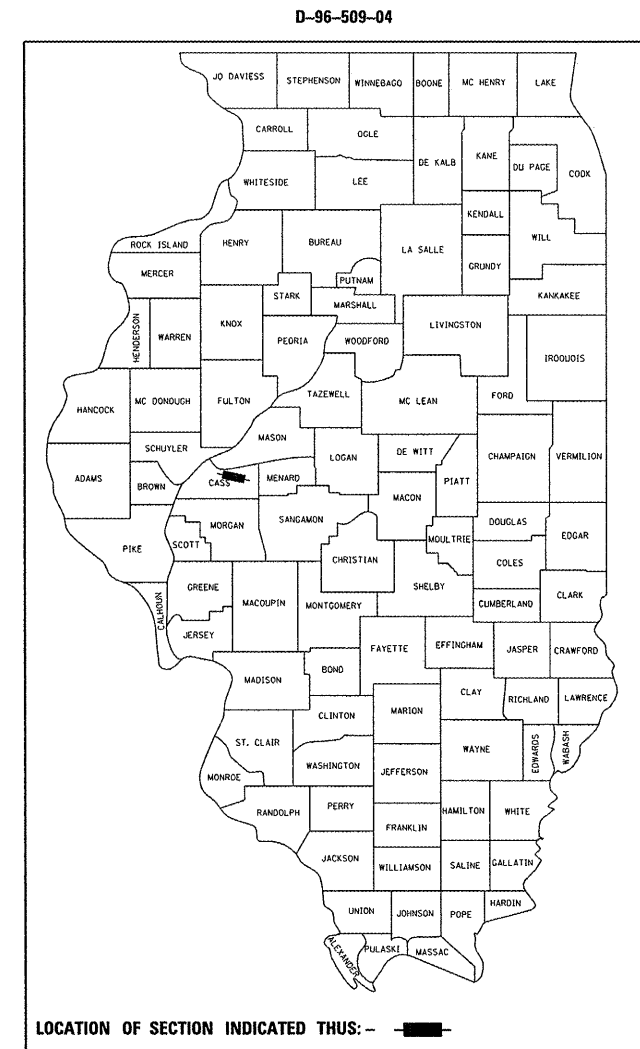


FULL SIZE PLANS HAVE BEEN PREPARED USING STANDARD ENGINEERING SCALES. REDUCED SIZED PLANS WILL NOT CONFORM TO STANDARD SCALES. IN MAKING MEASUREMENTS ON REDUCED PLANS, THE ABOVE SCALES MAY BE USED.

J.U.L.I.E.
JOINT UTILITY LOCATION INFORMATION FOR EXCAVATION
1-800-892-0123
OR 811

SQUAD LEADER: VINCE MADONIA (217)785-9046
PROJECT ENGINEER: JOHN NEGANGARD (217)782-6990

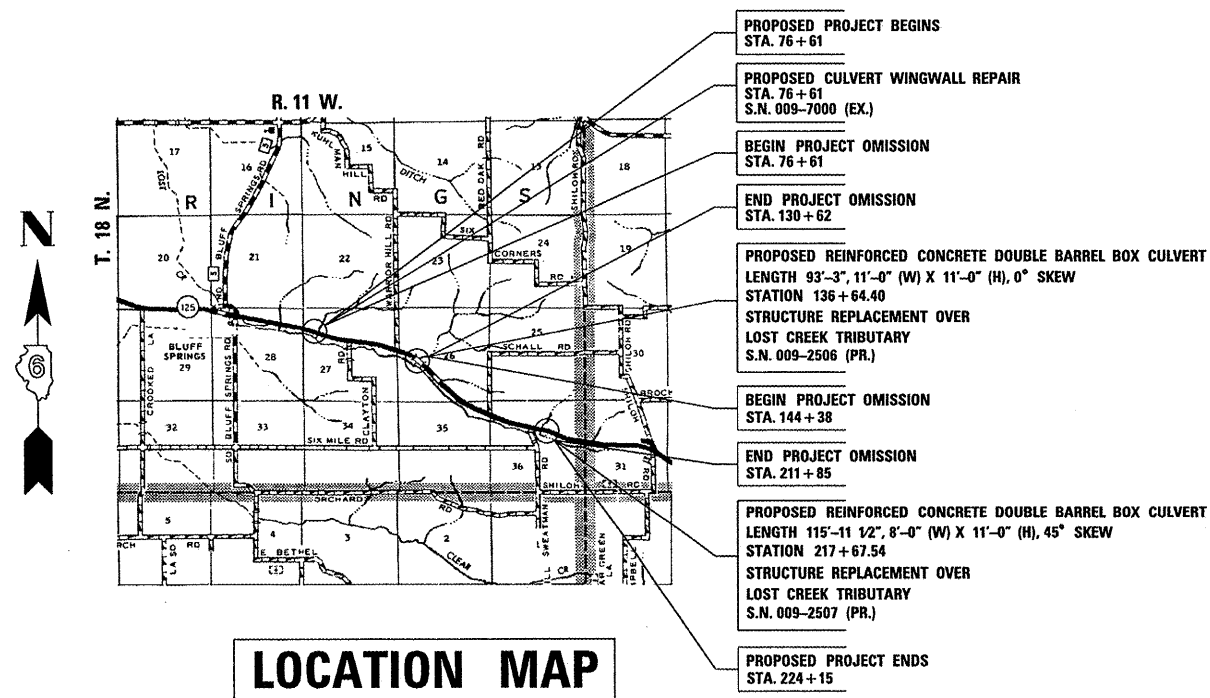
CONTRACT NO. 72875



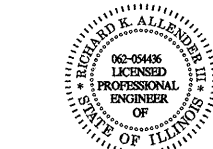
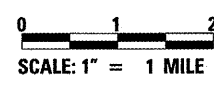
ADT = 3750 (2003)/5980 (2021)
% SU = 4.0
% MU = 7.3
TOWNSHIP: RINGS
FUNCTIONAL CLASSIFICATION: MINOR ARTERIAL (NON-URBAN)

STATE OF ILLINOIS
DEPARTMENT OF TRANSPORTATION
DIVISION OF HIGHWAYS
SUBMITTED February 5, 20 09
Rogers & Ombler
DEPUTY DIRECTOR OF HIGHWAYS, REGION FOUR ENGINEER
March 13, 20 09
Charles J. Ingersoll
ENGINEER OF DESIGN AND ENVIRONMENT
March 13, 20 09
Christine M. Reed
DIRECTOR OF HIGHWAYS, CHIEF ENGINEER

PRINTED BY THE AUTHORITY
OF THE STATE OF ILLINOIS



LENGTH OF PROJECT (S.N. 009-2506) = 1371.07 FEET = 0.260 MILES
LENGTH OF PROJECT (S.N. 009-2507) = 1230.00 FEET = 0.233 MILES
NET LENGTH OF PROJECT = 2601.07 FEET = 0.493 MILES
TOTAL LENGTH OF PROJECT = 14749.07 FEET = 2.793 MILES



Richard K. Allender III 2-4-09
Expiration Date: 11/30/2009