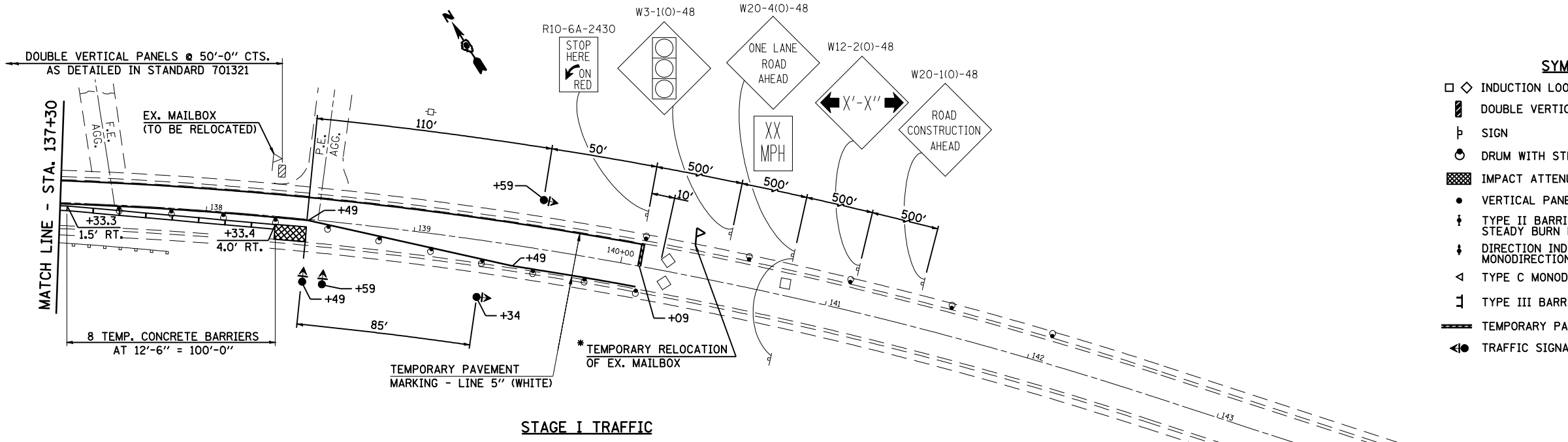


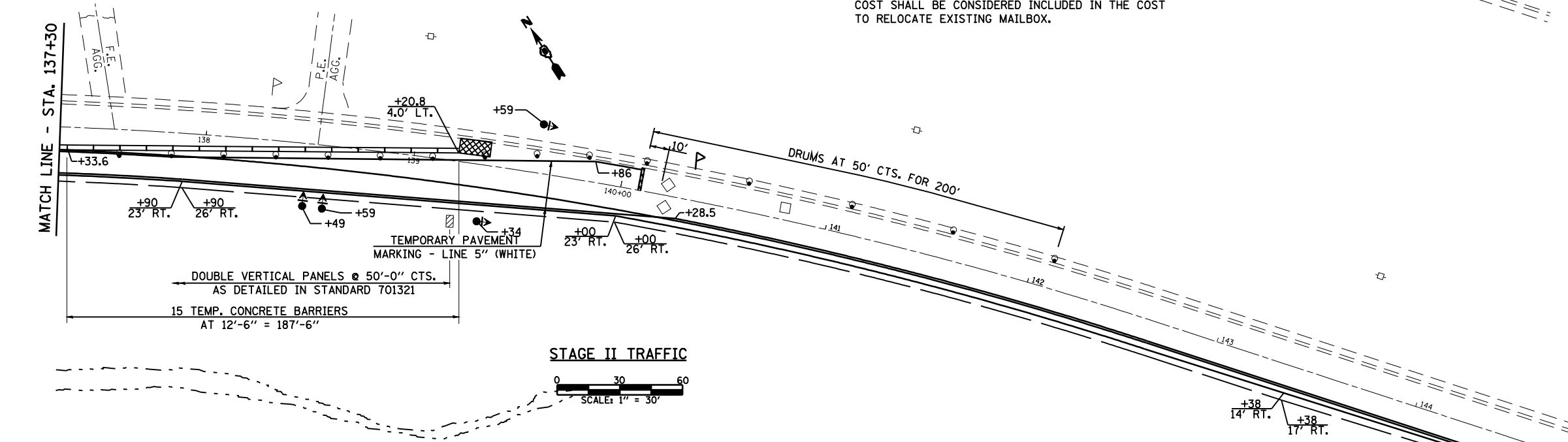
**SYMBOLS**

- ◇ INDUCTION LOOP DETECTOR
- ▬ DOUBLE VERTICAL PANEL
- ⊥ SIGN
- ⊙ DRUM WITH STEADY BURN MONODIRECTIONAL LIGHT
- ▨ IMPACT ATTENUATOR (NARROW)
- VERTICAL PANEL WITH STEADY BURN MONODIRECTIONAL LIGHT
- ⊥ TYPE II BARRICADE, DRUM OR VERTICAL BARRICADE WITH STEADY BURN MONODIRECTIONAL LIGHT
- ⊥ DIRECTION INDICATOR BARRICADE WITH STEADY BURN MONODIRECTIONAL LIGHT
- △ TYPE C MONODIRECTIONAL REFLECTOR
- ⊥ TYPE III BARRICADE
- ▬ TEMPORARY PAINT MARKING - LINE 24"
- ⊙ TRAFFIC SIGNAL W/ BACKPLATE



**STAGE I TRAFFIC**

\* EXISTING MAILBOX TO BE TEMPORARILY RELOCATED TO A LOCATION AS DIRECTED BY THE ENGINEER. THE COST SHALL BE CONSIDERED INCLUDED IN THE COST TO RELOCATE EXISTING MAILBOX.



**STAGE II TRAFFIC**

**TRAFFIC CONTROL SCHEDULE**

LOCATION STATION TO STATION	TEMP. CONC. BARRIER (FOOT)	RELOCATE TEMP. CONC. BARRIER (FOOT)	IMPACT ATTENUATOR (EACH)	RELOCATE IMPACT ATTENUATOR (EACH)
STAGE I				
STA. 134+67.9 TO STA. 134+82.9			1	
STA. 134+82.9 TO STA. 138+33.4	350			
STA. 138+33.4 TO STA. 138+48.4			1	
STAGE II				
STA. 133+93.1 TO STA. 134+08.1				1
STA. 134+08.1 TO STA. 137+58.7		350		
STA. 137+58.7 TO STA. 139+20.8	162.5			
STA. 138+32.7 TO STA. 138+47.7				1
<b>TOTAL</b>	<b>512.5</b>	<b>350</b>	<b>2</b>	<b>2</b>

**SCHEDULE  
TEMPORARY PAVEMENT MARKING &  
WORK ZONE PAVEMENT MARKING REMOVAL**

LOCATION STATION TO STATION	TEMP. PAV'T. MARKING LINE - 5" (FOOT)		WORK ZONE PAVEMENT MARKING REMOVAL (SQ. FT.)
	WHITE	YELLOW	
STAGE I			
STA. 132+58 TO STA. 140+09 LT.	751		313
STA. 132+58 TO STA. 140+09 RT.	751		313
STAGE II			
STA. 130+62 TO STA. 144+38 RT.	1371		572
STA. 133+18 TO STA. 139+86 LT.	668		278
SHORT TERM PAVEMENT MARKING			115
<b>TOTAL</b>	<b>3541</b>		<b>1591</b>

NOTE: WORK THIS SHEET WITH SHEETS 12, 13 & 18 OF 71.