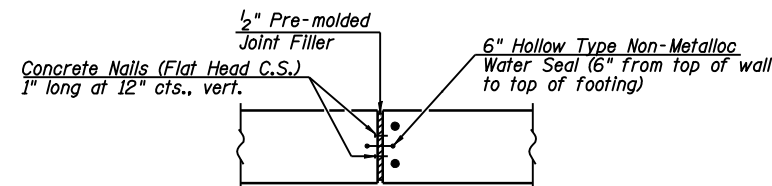


SECTION B-B

ELEVATION

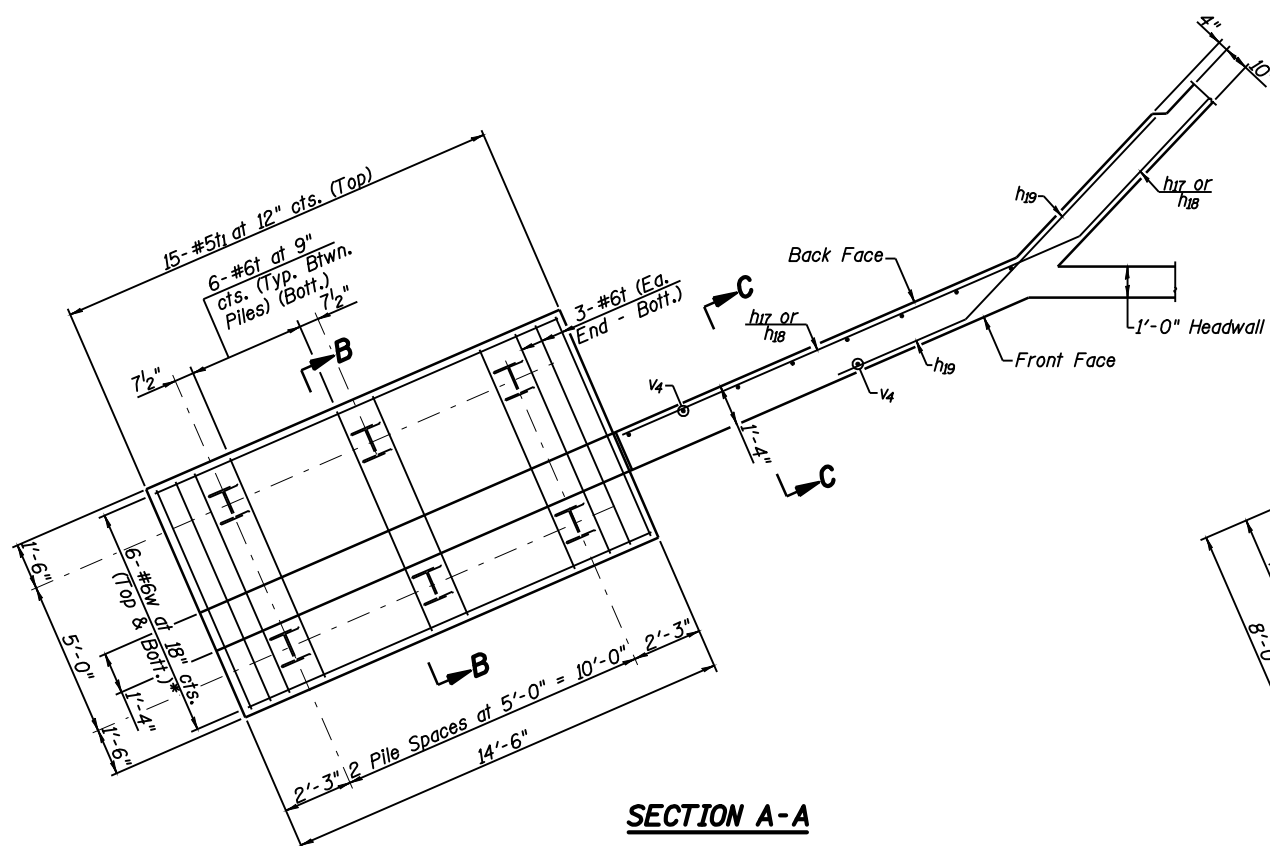
SECTION C-C



DETAIL A

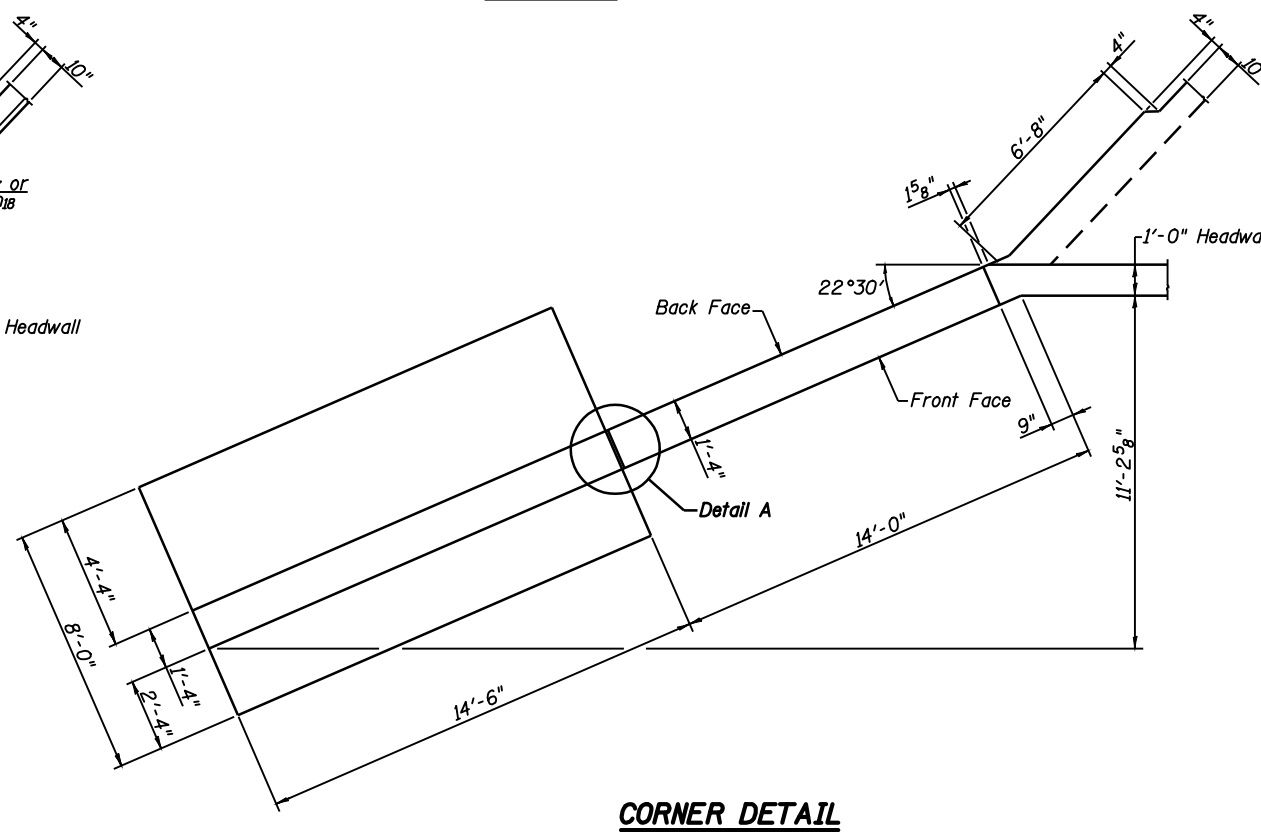
PILE DATA

| | N.E. Wing. | S.W. Wing. |
|---------------------------------|------------------|------------------|
| Pile Type & Size: | Steel HP 12 x 53 | Steel HP 12 x 53 |
| Nominal Required Bearing: | 137k | 137k |
| Allowable Resistance Available: | 45k | 45k |
| Estimated Pile Length: | 60' | 60' |
| Number of Production Piles: | 5 | 5 |
| Number of Test Piles: | 1 | 1 |



SECTION A-A

* Shift w bars in bottom of footing to miss piles



CORNER DETAIL

CULVERT DETAILS
IL. ROUTE 125 OVER
TRIBUTARY TO LOST CREEK
F.A.P. ROUTE 67 - SECTION (6X-1)B-2
CASS COUNTY
STA. 76+61.00
S.N. 009-7000



Allen Henderson & Associates, Inc.
 Civil and Structural Engineers Springfield, IL
 62703 Phone: (217)544-8033 IL Design Firm
 No. 184-001907

SHEET NO. 3
 OF 5 SHEETS

| F.A.P. RTE. | SECTION | COUNTY | TOTAL SHEETS | SHEET NO. |
|---|-----------|--------|--------------|-----------|
| 67 | (6X-1)B-2 | CASS | 71 | 32 |
| CONTRACT NO. 72875 | | | | |
| FED. ROAD DIST. NO. _ ILLINOIS FED. AID PROJECT | | | | |