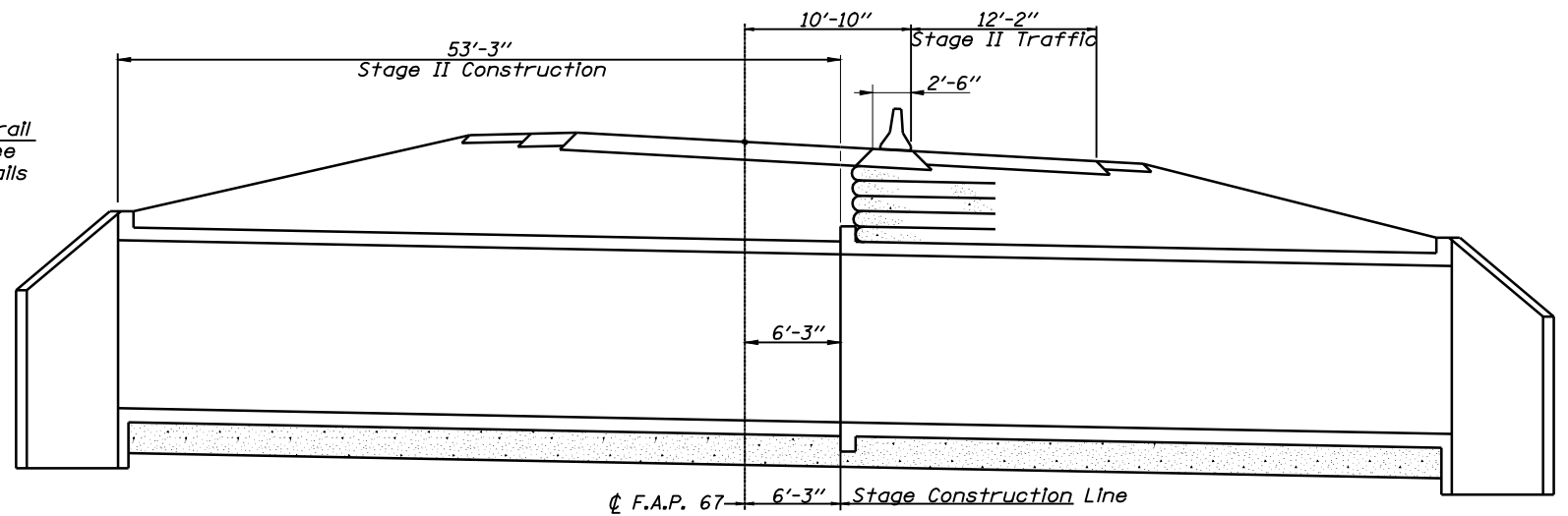
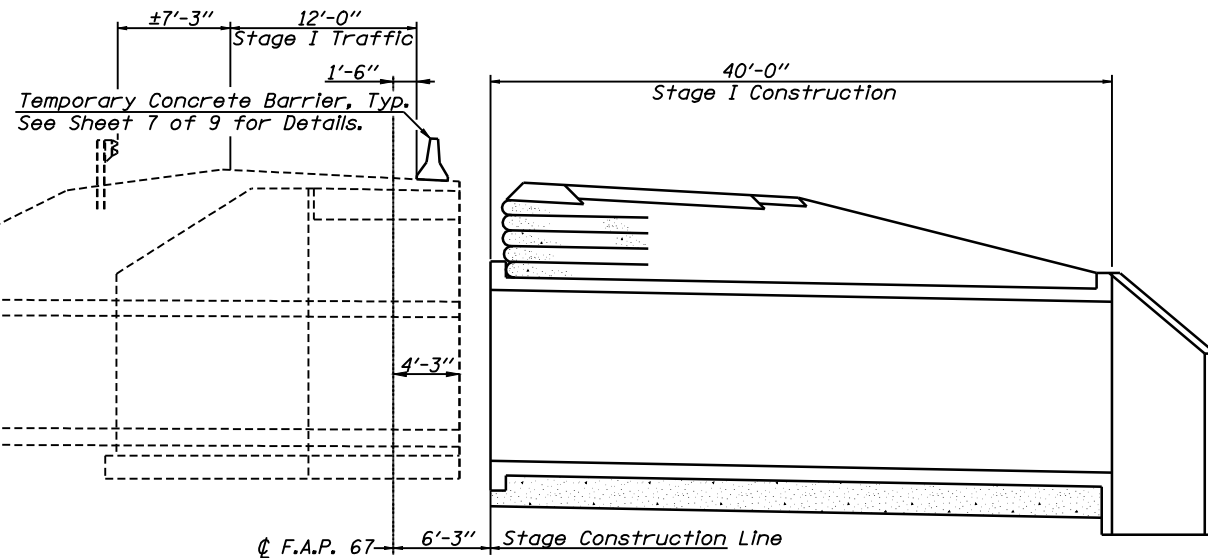


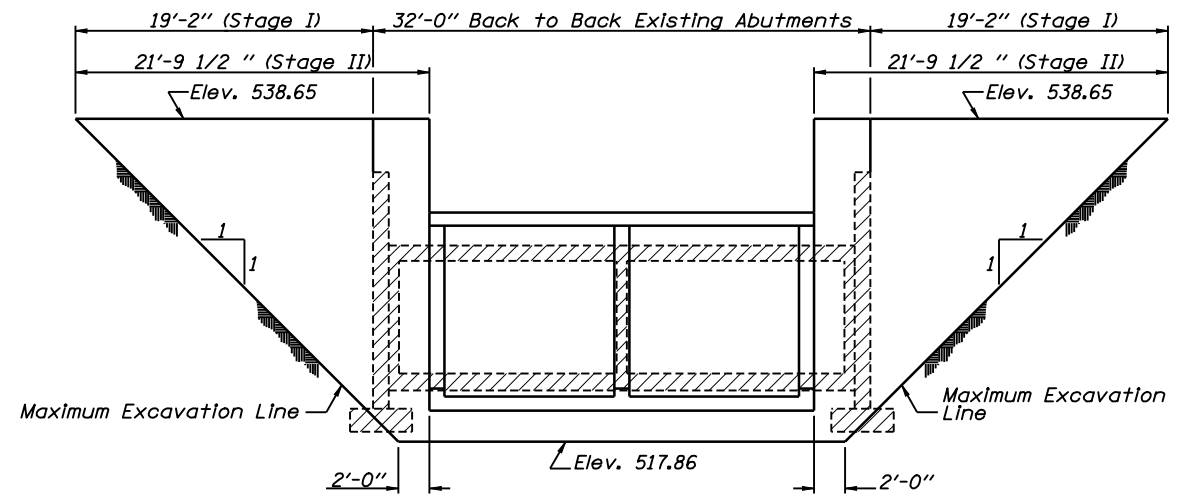
STAGE I REMOVAL



STAGE II CONSTRUCTION



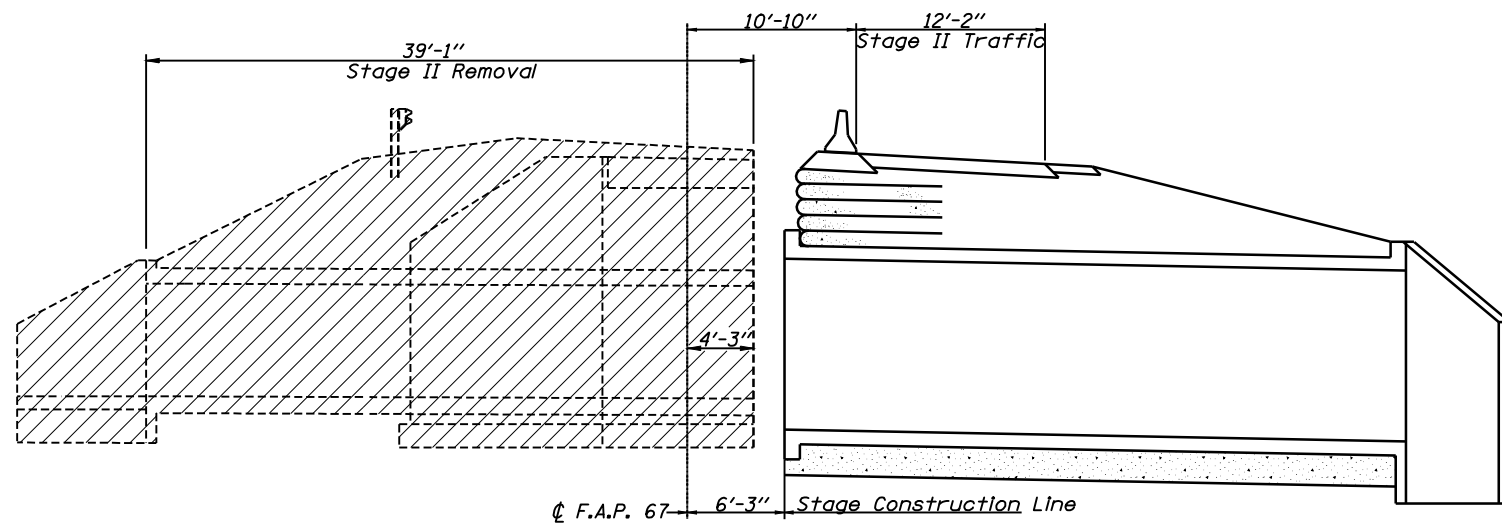
STAGE I CONSTRUCTION



TEMPORARY SOIL RETENTION SYSTEM

A cantilevered sheet piling system does not appear feasible and additional members or other retention systems may be necessary. The contractor shall submit a temporary soil retention system design including plan details and calculations for review and acceptance by the Engineer.

Estimated Exposed Area to be Retained: 383 sq. ft. (Stage I)
470 sq. ft. (Stage II)



STAGE II REMOVAL

Notes: Hatched areas indicate "Removal of Existing Structures".
See Roadway Plans for quantity of Temporary Concrete Barrier.
All Elevations are looking East.

STAGING DETAILS
IL. ROUTE 125 OVER
TRIBUTARY TO LOST CREEK
F.A.P. ROUTE 67 - SECTION (6X-1)B-2
CASS COUNTY
STA. 136+64.40
S.N. 009-2506



Allen Henderson & Associates, Inc.
Civil and Structural Engineers Springfield, IL.
62703 Phone: (217)544-8033 IL. Design Firm
No. 184-001907

SHEET NO. 2
OF 9 SHEETS

F.A.P. RTE.	SECTION	COUNTY	TOTAL SHEETS	SHEET NO.
67	(6X-1)B-2	CASS	71	36
CONTRACT NO. 72875				
FED. ROAD DIST. NO.		ILLINOIS FED. AID PROJECT		