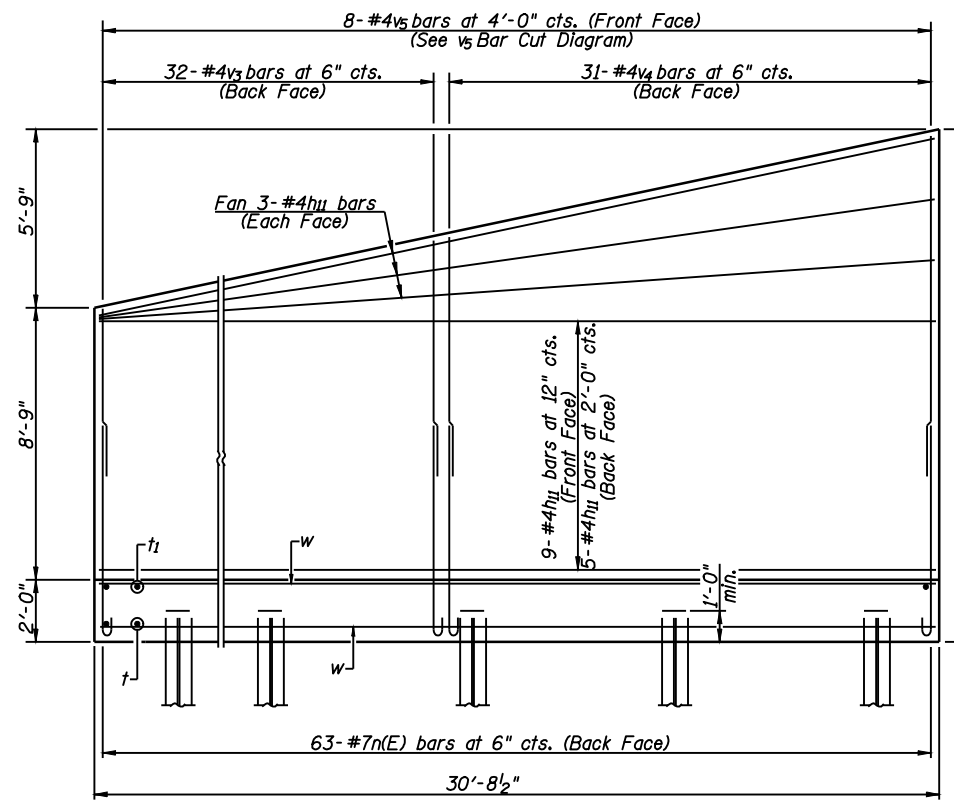
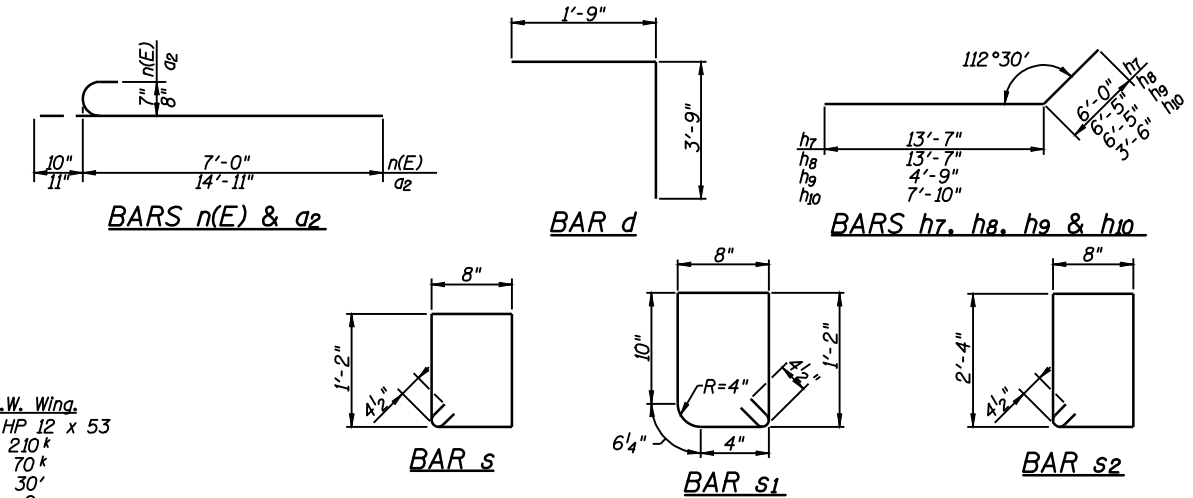


PLAN
(N.E. & S.W. Corners)

* Shift w bars in bottom of footing to miss piles.

PILE DATA

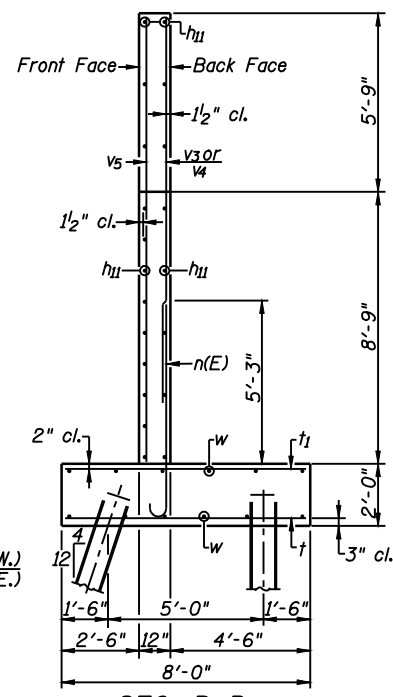
| | N.E. Wing. | S.W. Wing. |
|---------------------------------|------------------|------------------|
| Pile Type & Size: | Steel HP 12 x 53 | Steel HP 12 x 53 |
| Nominal Required Bearing: | 210 ^k | 210 ^k |
| Allowable Resistance Available: | 70 ^k | 70 ^k |
| Estimated Pile Length: | 26' | 30' |
| Number of Production Piles: | 9 | 9 |
| Number of Test Piles: | 1 | 1 |



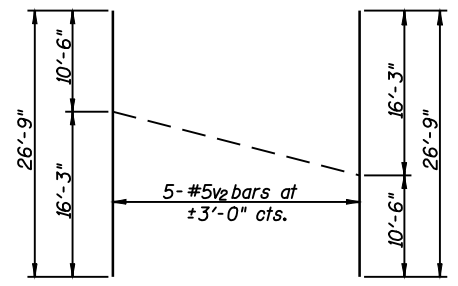
PARTIAL ELEVATION
(N.E. & S.W. Corners)

EL. 567.80 (S.W.)
EL. 568.63 (N.E.)

EL. 551.30 (S.W.)
EL. 552.13 (N.E.)

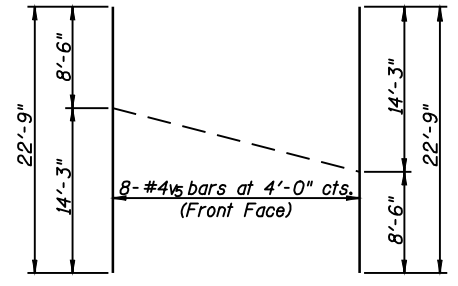


SEC. B-B



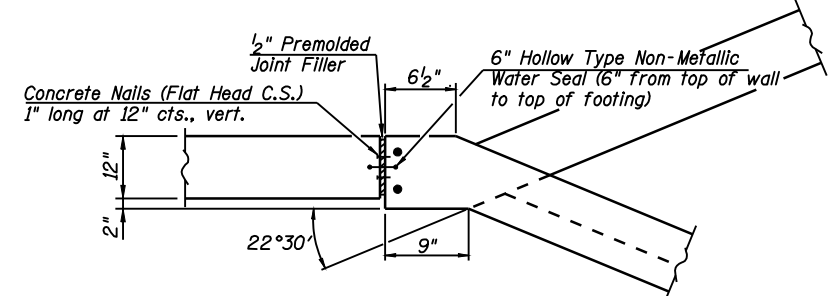
BAR v2 CUT DIAGRAM

Note: Order v2 bars full length. Lay out in field as shown. Cut along cut line. Use remainder of bar in opposite wingwall.



BAR v5 CUT DIAGRAM

Note: Order v5 bars full length. Lay out in field as shown. Cut along cut line. Use remainder of bar in opposite wingwall.



CORNER DETAIL

BILL OF MATERIAL

| Bar | No. | Size | Length | Shape |
|----------------------------------|-----|---------|---------|-------|
| a | 198 | #8 | 14'-2" | — |
| a1 | 396 | #5 | 8'-2" | — |
| a2 | 396 | #8 | 15'-10" | — |
| d | 62 | #4 | 5'-6" | — |
| h | 152 | #5 | 25'-6" | — |
| h1 | 152 | #5 | 34'-5" | — |
| h2 | 66 | #7 | 26'-2" | — |
| h3 | 66 | #7 | 35'-0" | — |
| h4 | 16 | #8 | 26'-0" | — |
| h5 | 8 | #6 | 26'-0" | — |
| h6 | 8 | #4 | 12'-5" | — |
| h7 | 10 | #9 | 19'-7" | — |
| h8 | 18 | #9 | 20'-0" | — |
| h9 | 12 | #9 | 11'-2" | — |
| h10 | 30 | #9 | 11'-4" | — |
| h11 | 40 | #4 | 30'-4" | — |
| h12 | 6 | #5 | 7'-10" | — |
| n(E) | 126 | #7 | 7'-10" | — |
| s | 52 | #4 | 4'-5" | □ |
| s1 | 25 | #4 | 4'-3" | □ |
| s2 | 27 | #4 | 6'-9" | □ |
| t | 68 | #6 | 7'-8" | — |
| t1 | 62 | #5 | 7'-8" | — |
| v | 522 | #5 | 3'-6" | — |
| v1 | 524 | #5 | 11'-1" | — |
| v2 | 7 | #5 | 26'-9" | — |
| v3 | 64 | #4 | 8'-2" | — |
| v4 | 62 | #4 | 11'-0" | — |
| v5 | 8 | #4 | 22'-9" | — |
| w | 24 | #6 | 30'-4" | — |
| Concrete Box Culverts | | Cu. Yd. | 364.6 | |
| Reinforcement Bars | | Pound | 63240 | |
| Reinforcement Bars, Epoxy Coated | | Pound | 2020 | |
| Bar Splicers | | Each | 109 | |
| Furnishing Steel Piles, HP 12x53 | | Foot | 504 | |
| Driving Piles | | Foot | 504 | |
| Test Piles, Steel HP 12x53 | | Each | 2 | |

CULVERT DETAILS
IL. ROUTE 125 OVER
TRIBUTARY TO LOST CREEK
F.A.P. ROUTE 67 - SECTION (6X-1)B-2
CASS COUNTY
STA. 217+67.54
S.N. 009-2507

Allen Henderson & Associates, Inc.
Civil and Structural Engineers Springfield, IL.
62703 Phone: (217)544-8033 IL. Design Firm
No. 184-001907

SHEET NO. 6
OF 11 SHEETS

| F.A.P. RTE. | SECTION | COUNTY | TOTAL SHEETS | SHEET NO. |
|---------------------|-----------|---------------------------|--------------|-----------|
| 67 | (6X-1)B-2 | CASS | 71 | 49 |
| CONTRACT NO. 72875 | | | | |
| FED. ROAD DIST. NO. | | ILLINOIS FED. AID PROJECT | | |