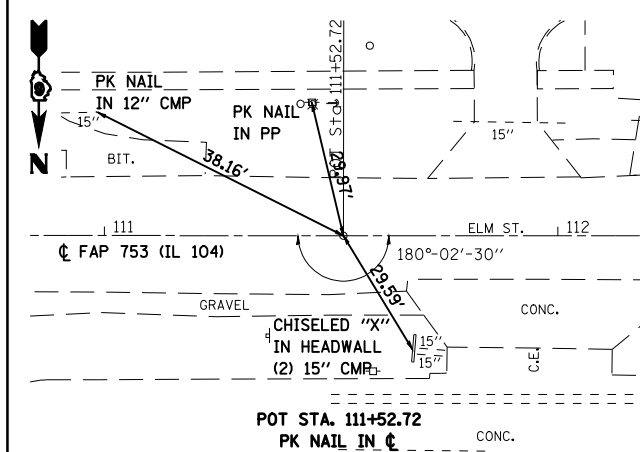
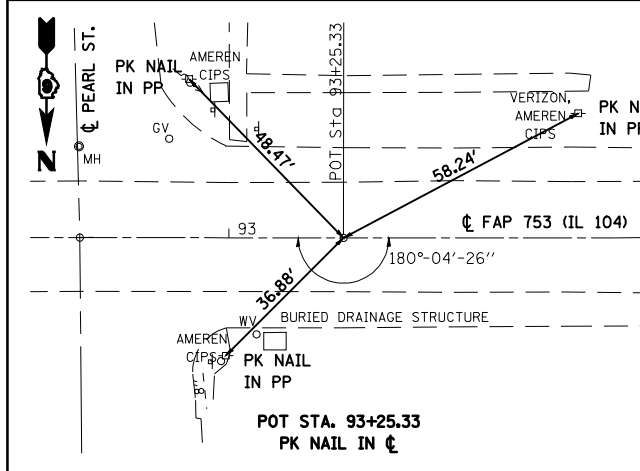
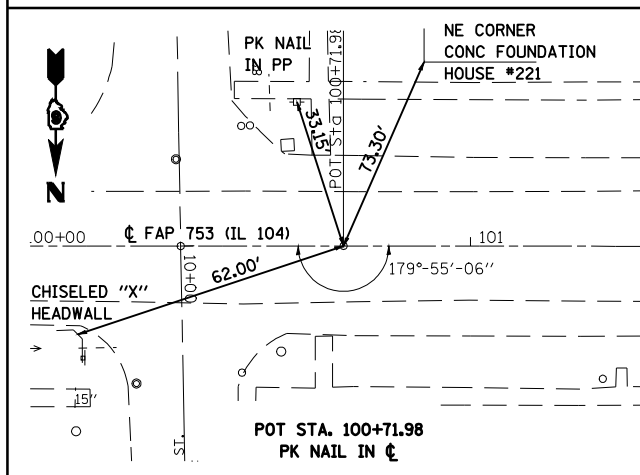
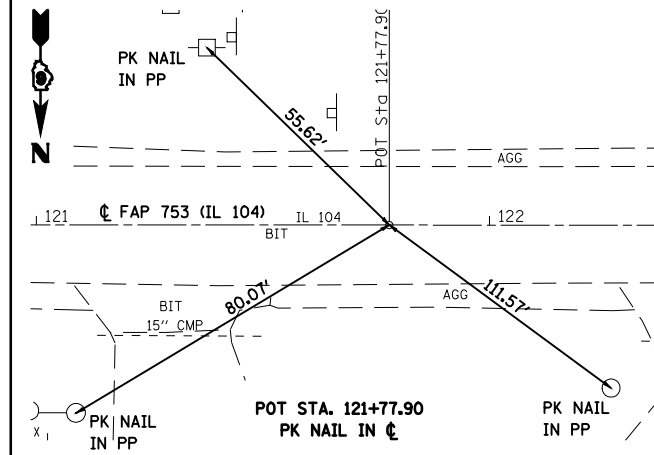
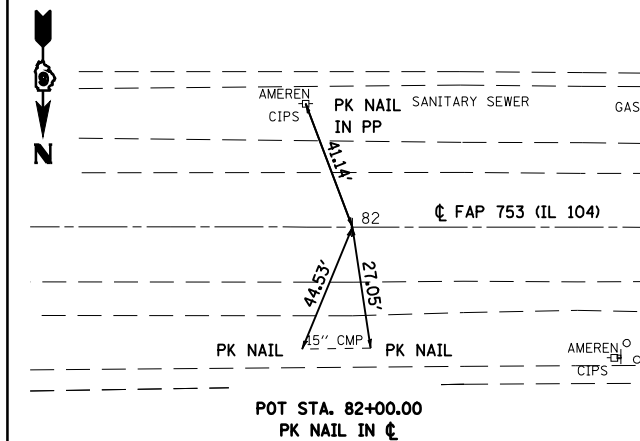


F.A.P. RTE.	SECTION	COUNTY	TOTAL SHEETS	SHEET NO.
753	•	MORGAN	137	22
STA.		TO STA.		
FED. ROAD DIST. NO. 6 ILLINOIS		FED. AID PROJECT		
• 128RS-3, 139RS-3				

BENCHMARKS

- | | |
|--|--|
| <p>BM #1
 STA. 115+75±, 33'± RT.
 CHISELED "•" ON SE CAP BOLT FIRE HYDRANT
 NE CORNER ENTRANCE TO OLD HIGH SCHOOL
 (NOW MIDDLE SCHOOL), ±500' WEST OF IL. RTE. 111
 ELEV.= 669.78</p> | <p>BM #6
 STA. 14+36±, 31'± LT. (PEARL ST.)
 SE CAP BOLT ON FIRE HYDRANT
 NW CORNER PEARL ST. & STATE ST.
 ELEV.= 685.42</p> |
| <p>BM #2
 STA. 110+21±, 40.5'± RT.
 CHISELED "•" ON SE CAP BOLT FIRE HYDRANT
 NE CORNER IL RTE. 104 & IL RTE. 111
 ELEV.= 670.64</p> | <p>BM #7
 STA. 17+46±, 23'± LT. (PEARL ST.)
 CHISELED "•" ON SE CAP BOLT FIRE HYDRANT
 NW CORNER PEARL ST. & TEMPLE ST.
 ELEV.= 689.73</p> |
| <p>BM #3
 STA. 104+02±, 27.5'± RT.
 CHISELED "•" ON SE CAP BOLT FIRE HYDRANT
 NORTH SIDE IL. RTE. 104 MIDWAY BETWEEN
 BROOKS ST. & IL. RTE. 111
 ELEV.= 673.78</p> | <p>BM #8
 STA. 87+32±, 41'± RT.
 CHISELED "□" ON HEADWALL OF 12" CMP
 NW CORNER OF IL. RTE. 104 & GROVE ST.
 ELEV.= 681.00</p> |
| <p>BM #4
 STA. 96+99±, 42'± RT.
 CHISELED "□" ON SE CORNER OF CONC
 FOUNDATION OF LIGHTED CASEY'S SIGN
 NW CORNER IL. RTE 104 & PROSPECT ST.
 ELEV.= 674.05</p> | <p>BM #9
 STA. 84+47±, 30'± LT.
 RAILROAD SPIKE IN POWER POLE
 SOUTH SIDE IL. RTE. 104
 2nd POWER POLE, EAST SIDE OF GROVE ST.
 ELEV.= 681.59</p> |
| <p>BM #5
 STA. 92+31±, 39'± LT.
 RAILROAD SPIKE IN POWER POLE
 SE CORNER IL. RTE. 104 & PEARL ST.
 ELEV.= 677.98</p> | |

NOTE:
 BENCHMARKS ARE LISTED IN CHRONOLOGICAL ORDER (DECREASING STATIONING).
 ALL STATION & OFFSET REFERENCES ARE ALONG THE EXISTING IL. RTE. 104 ALIGNMENT
 UNLESS OTHERWISE NOTED.



NOTE: THE RESIDENT ENGINEER SHALL CONTACT DISTRICT 6 SURVEYS PRIOR TO USING ANY LAYOUT OR BENCHMARK INFORMATION TO VERIFY ITS ACCURACY.

REVISIONS	
NAME	DATE

ILLINOIS DEPARTMENT OF TRANSPORTATION
ALIGNMENT TIES AND BENCHMARKS
 FAP 753 (IL 104)
 SEC. 128RS-3, 139RS-3
 MORGAN COUNTY
 DATE NOVEMBER 2, 2007
 DRAWN BY TMJ
 CHECKED BY WHA