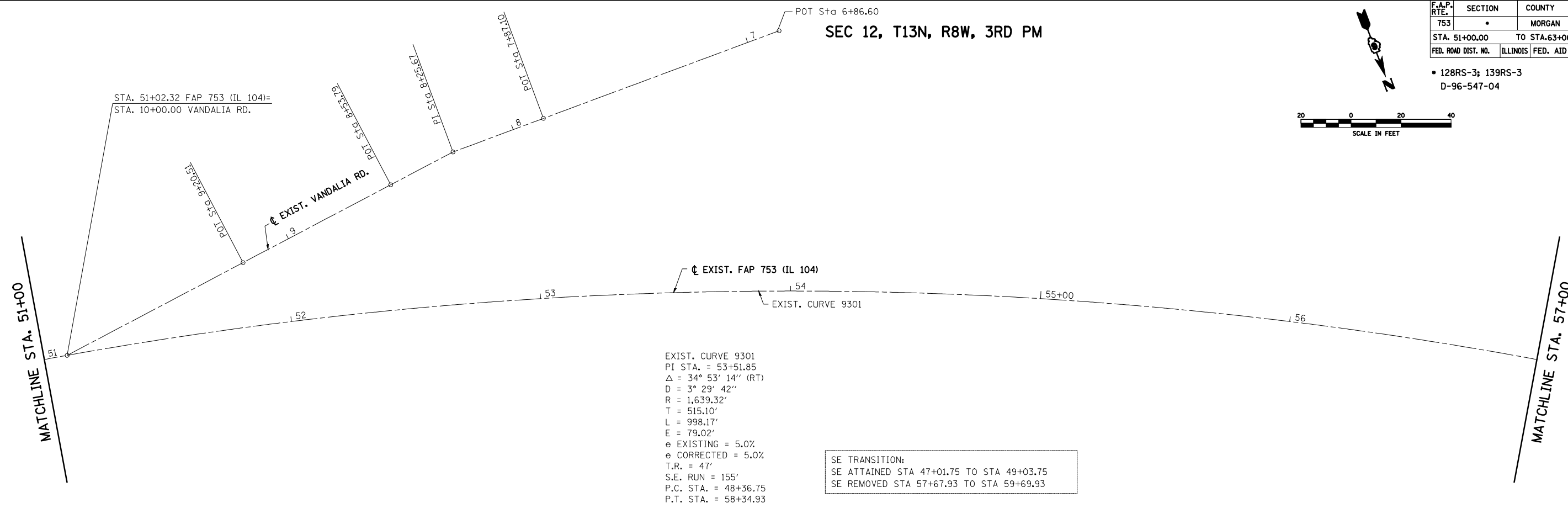


F.A.P. RTE.	SECTION	COUNTY	TOTAL SHEETS	SHEET NO.
753	*	MORGAN	137	24
STA. 51+00.00		TO STA. 63+00.00		
FED. ROAD DIST. NO.	ILLINOIS	FED. AID PROJECT		

• 128RS-3; 139RS-3
D-96-547-04



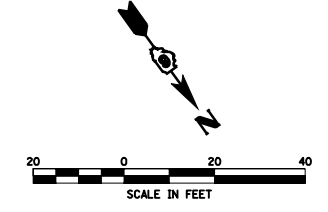
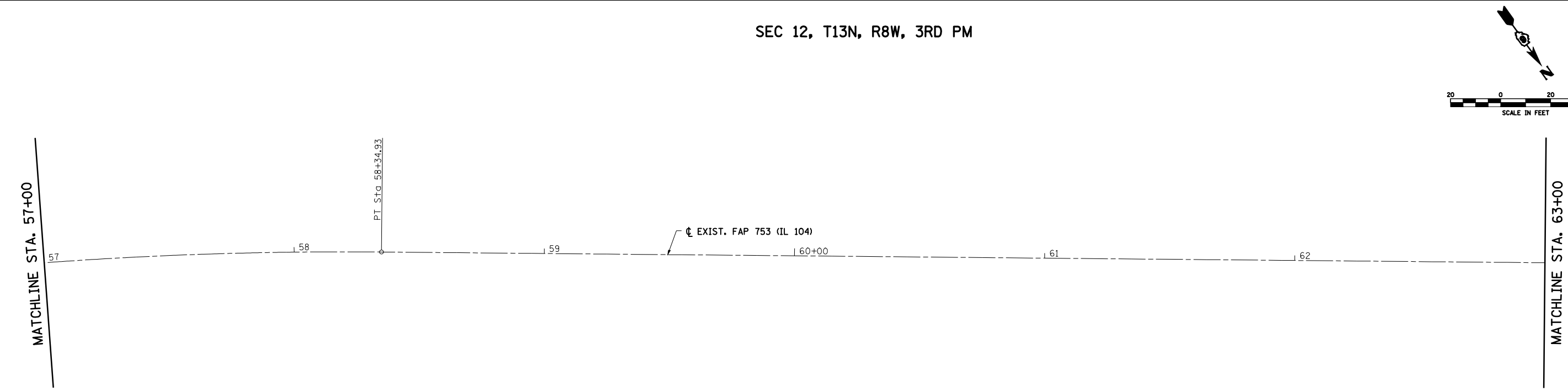
SEC 12, T13N, R8W, 3RD PM



EXIST. CURVE 9301
 PI STA. = 53+51.85
 $\Delta = 34^\circ 53' 14''$ (RT)
 $D = 3^\circ 29' 42''$
 $R = 1,639.32'$
 $T = 515.10'$
 $L = 998.17'$
 $E = 79.02'$
 e EXISTING = 5.0%
 e CORRECTED = 5.0%
 $T.R. = 47'$
 $S.E. RUN = 155'$
 $P.C. STA. = 48+36.75$
 $P.T. STA. = 58+34.93$

SE TRANSITION:
 SE ATTAINED STA 47+01.75 TO STA 49+03.75
 SE REMOVED STA 57+67.93 TO STA 59+69.93

SEC 12, T13N, R8W, 3RD PM



NOTE: THE RESIDENT ENGINEER SHALL CONTACT DISTRICT 6 SURVEYS PRIOR TO USING ANY LAYOUT OR BENCHMARK INFORMATION TO VERIFY ITS ACCURACY.

REVISIONS	
NAME	DATE

ILLINOIS DEPARTMENT OF TRANSPORTATION
 FAP 753 (IL 104)
 ALIGNMENT LAYOUT
 STA 51+00.00 TO STA 63+00.00
 DRAWN BY TMJ
 CHECKED BY WHA
 DATE NOVEMBER 2, 2007

PLOT DATE = Jan-16-2009 09:47:35AM
 FILE NAME = S:\CADD\72923 (D-96-547-04)\Consult\Task\Drawings\Hatchwork\Final\2447-18.dwg
 PLOT SCALE = 42.3529 / IN.
 USER NAME = laughlin-1