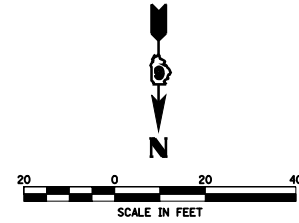


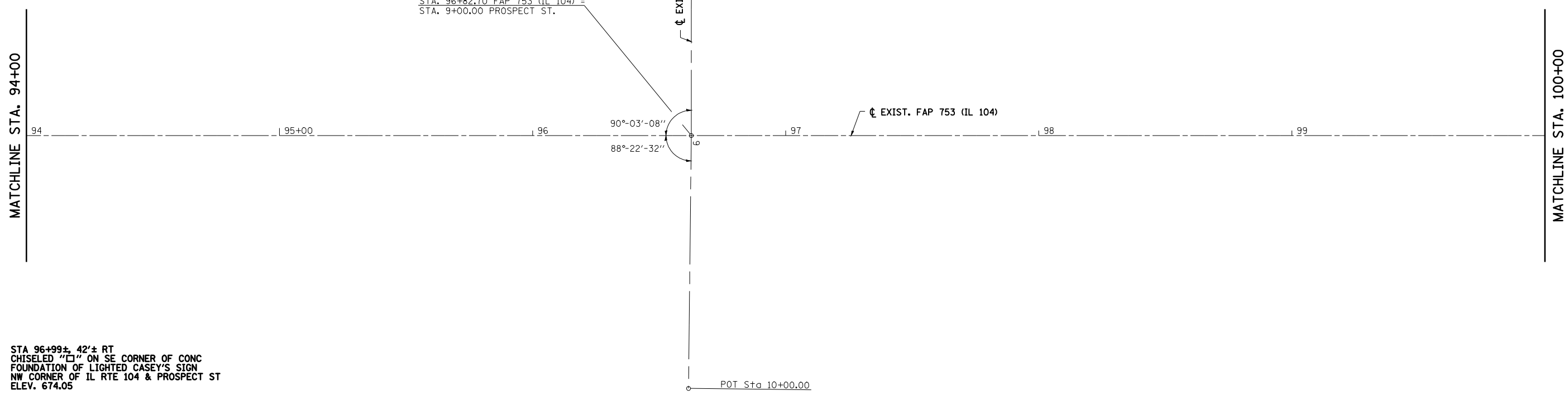
F.A.P. RTE.	SECTION	COUNTY	TOTAL SHEETS	SHEET NO.
753	*	MORGAN	137	28

STA. 94+00.00	TO STA. 105+00.00
FED. ROAD DIST. NO.	ILLINOIS FED. AID PROJECT

- 128RS-3; 139RS-3
- D-96-547-04



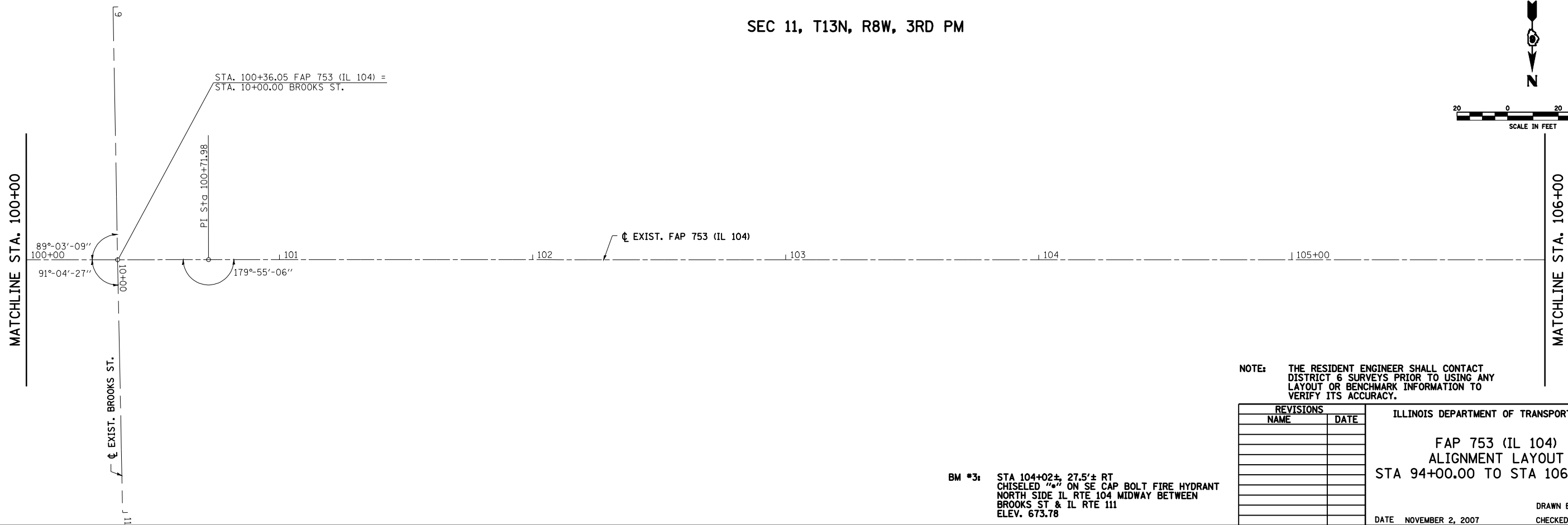
SEC 11, T13N, R8W, 3RD PM



BM #4: STA 96+99±, 42'± RT
CHISELED "□" ON SE CORNER OF CONC
FOUNDATION OF LIGHTED CASEY'S SIGN
NW CORNER OF IL RTE 104 & PROSPECT ST
ELEV. 674.05

POT Sta 10+00.00

SEC 11, T13N, R8W, 3RD PM



NOTE: THE RESIDENT ENGINEER SHALL CONTACT DISTRICT 6 SURVEYS PRIOR TO USING ANY LAYOUT OR BENCHMARK INFORMATION TO VERIFY ITS ACCURACY.

REVISIONS	
NAME	DATE

ILLINOIS DEPARTMENT OF TRANSPORTATION

FAP 753 (IL 104)
ALIGNMENT LAYOUT
STA 94+00.00 TO STA 106+00.00

BM #3: STA 104+02±, 27.5'± RT
CHISELED "•" ON SE CAP BOLT FIRE HYDRANT
NORTH SIDE IL RTE 104 MIDWAY BETWEEN
BROOKS ST & IL RTE 111
ELEV. 673.78

DATE NOVEMBER 2, 2007
DRAWN BY TMJ
CHECKED BY WHA

PLOT DATE = Jan-16-2009 09:47:48AM
FILE NAME = S:\CADD\72923 (D\8654784)\Consultant\Drawings\Hatchwork\Final\2447-16.dwg
PLOT SCALE = 42.3625' / IN.
USER NAME = laughlin-1