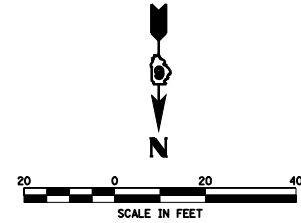


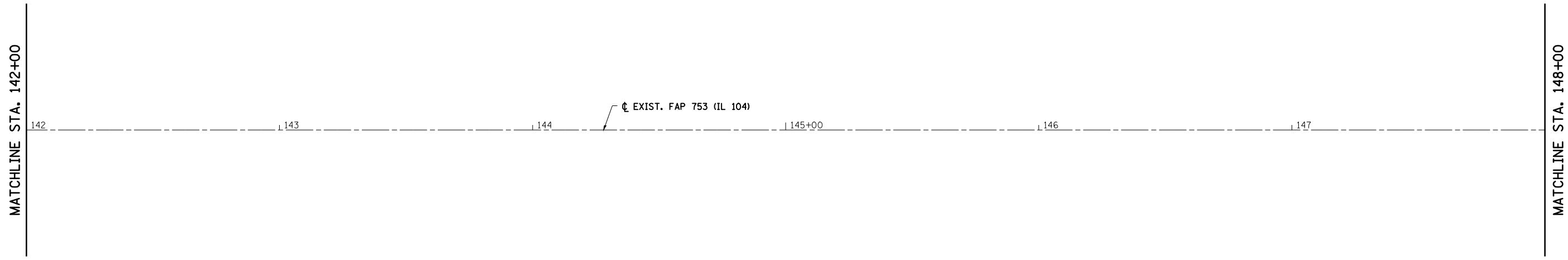
F.A.P. RTE.	SECTION	COUNTY	TOTAL SHEETS	SHEET NO.
753	*	MORGAN	137	32

STA. 142+00.00	TO STA. 152+50.30
FED. ROAD DIST. NO.	ILLINOIS FED. AID PROJECT

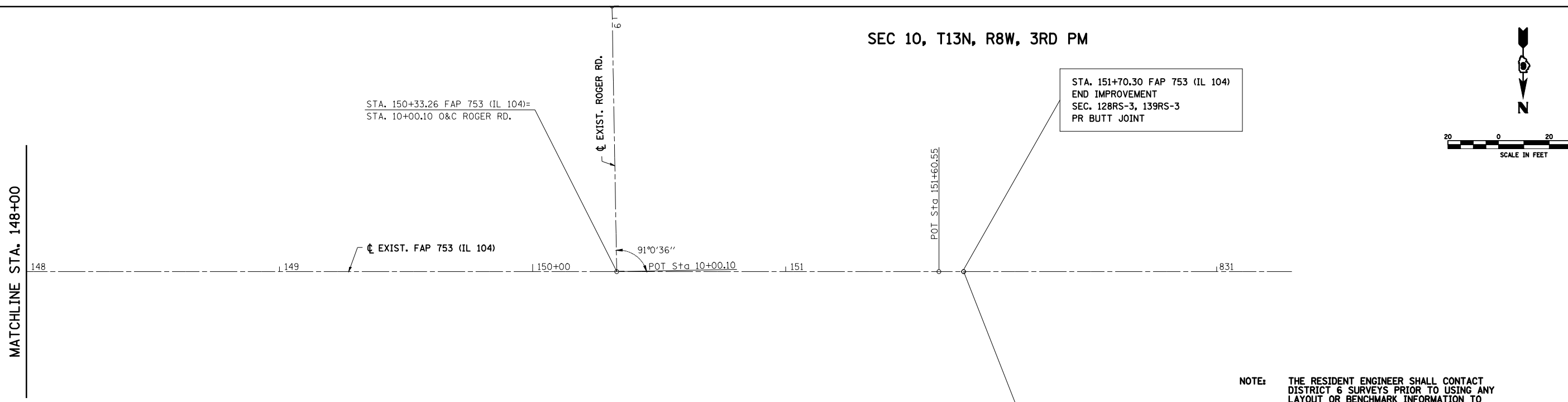
- 128RS-3; 139RS-3
- D-96-547-04



SEC 10, T13N, R8W, 3RD PM



SEC 10, T13N, R8W, 3RD PM



NOTE: THE RESIDENT ENGINEER SHALL CONTACT DISTRICT 6 SURVEYS PRIOR TO USING ANY LAYOUT OR BENCHMARK INFORMATION TO VERIFY ITS ACCURACY.

REVISIONS	
NAME	DATE

ILLINOIS DEPARTMENT OF TRANSPORTATION

FAP 753 (IL 104)
ALIGNMENT LAYOUT
STA 142+00.00 TO STA 152+50.30

DATE NOVEMBER 2, 2007
DRAWN BY TMJ
CHECKED BY WHA