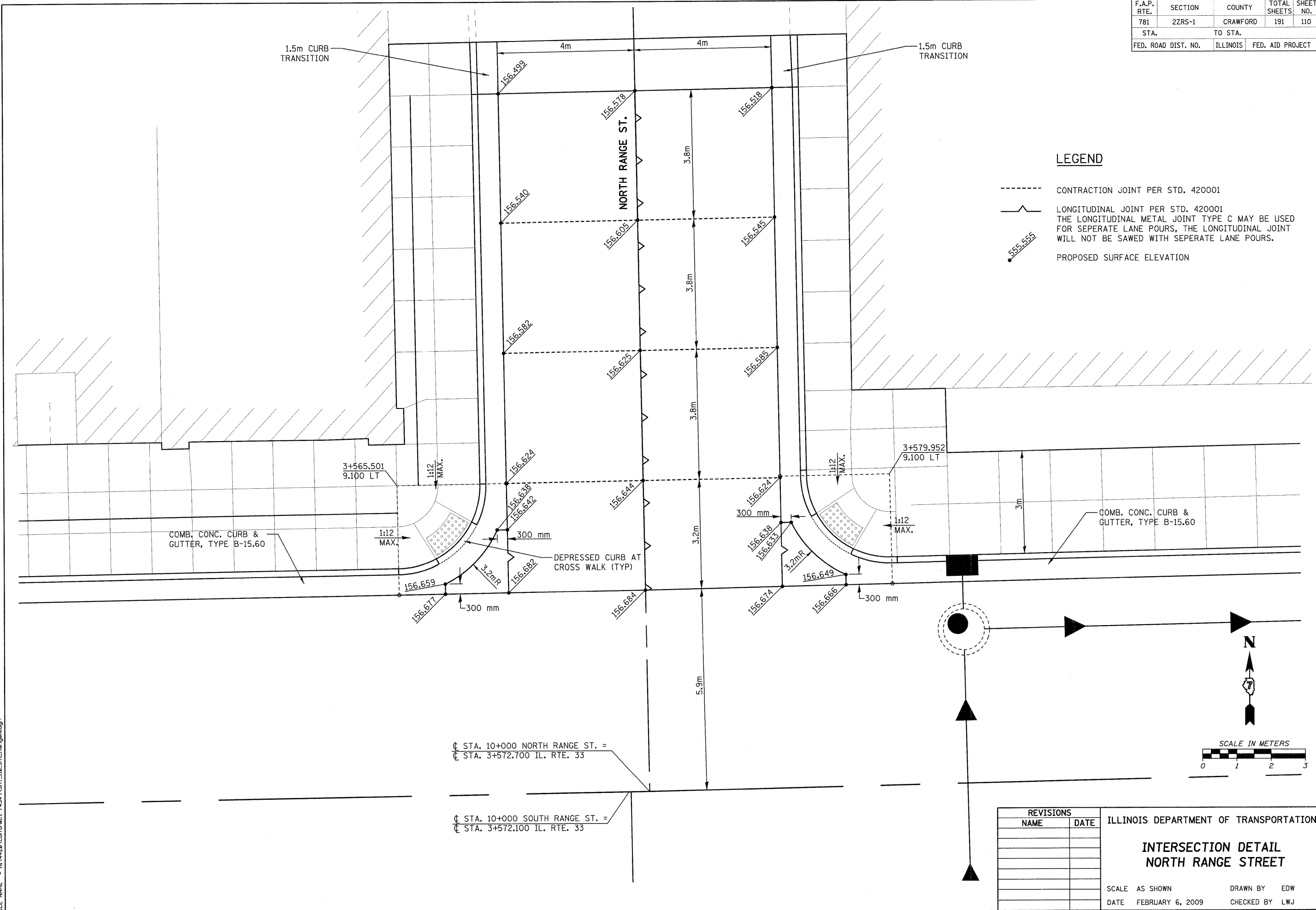


F.A.P. RTE.	SECTION	COUNTY	TOTAL SHEETS	SHEET NO.
781	2ZRS-1	CRAWFORD	191	110
STA.		TO STA.		
FED. ROAD DIST. NO.		ILLINOIS	FED. AID PROJECT	

**LEGEND**

- CONTRACTION JOINT PER STD. 420001
- ~ LONGITUDINAL JOINT PER STD. 420001  
THE LONGITUDINAL METAL JOINT TYPE C MAY BE USED FOR SEPERATE LANE POURS, THE LONGITUDINAL JOINT WILL NOT BE SAWED WITH SEPERATE LANE POURS.
- 555.555 PROPOSED SURFACE ELEVATION



⊕ STA. 10+000 NORTH RANGE ST. =  
⊕ STA. 3+572.700 IL. RTE. 33

⊕ STA. 10+000 SOUTH RANGE ST. =  
⊕ STA. 3+572.100 IL. RTE. 33

REVISIONS	
NAME	DATE

ILLINOIS DEPARTMENT OF TRANSPORTATION  
**INTERSECTION DETAIL  
NORTH RANGE STREET**  
SCALE AS SHOWN      DRAWN BY EDW  
DATE FEBRUARY 6, 2009      CHECKED BY LWJ

PLOT DATE = 2/5/2009  
FILE NAME = H:\4420\Contract 74349\SH1\_110\_int\_RangeN.dgn

H. M. & G. NO. 4420