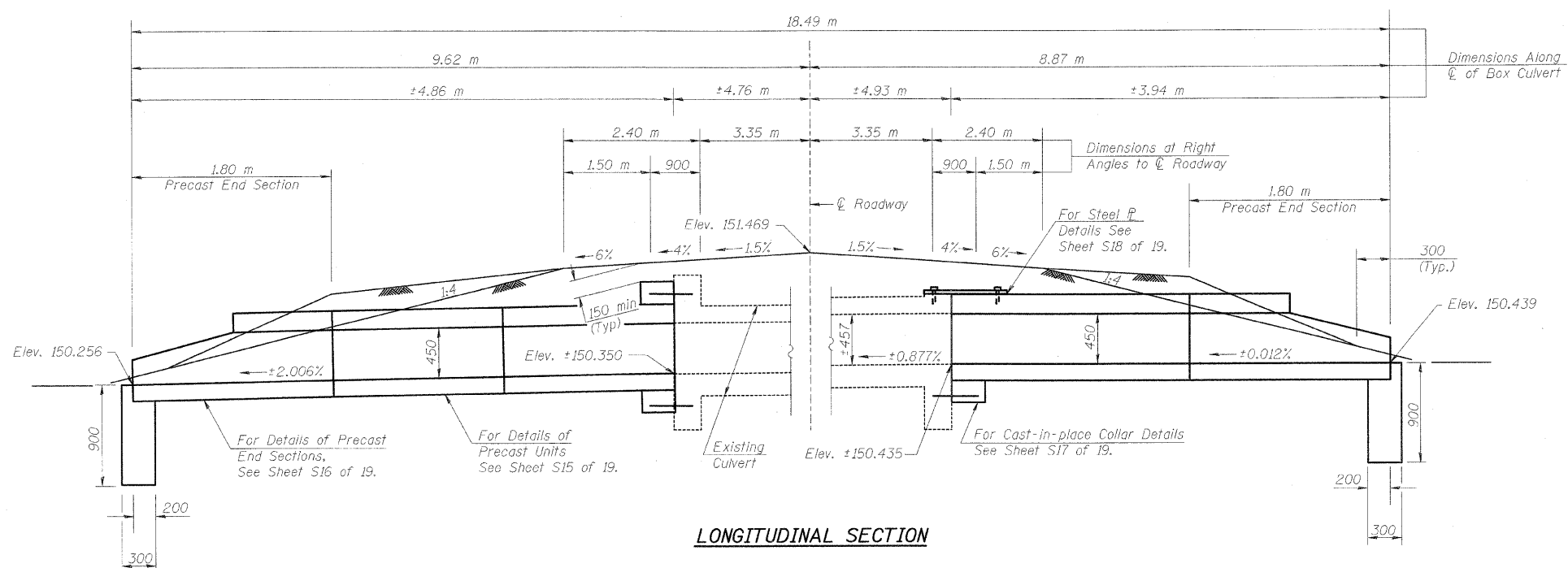


F.A.P. RTE.	SECTION	COUNTY	TOTAL SHEETS	SHEET NO.
781	2ZRS-1	CRAWFORD	191	130
STA.	TO STA.			
FED. ROAD DIST. NO.	ILLINOIS	FED. AID PROJECT		

Existing Structure: The structure is a single barrel 914 mm x 457 mm box culvert at a skew of 0°52'01" right forward. The culvert has an overall length of 9.69 m. The contractor shall extend the culvert on each end for the dimensions shown.

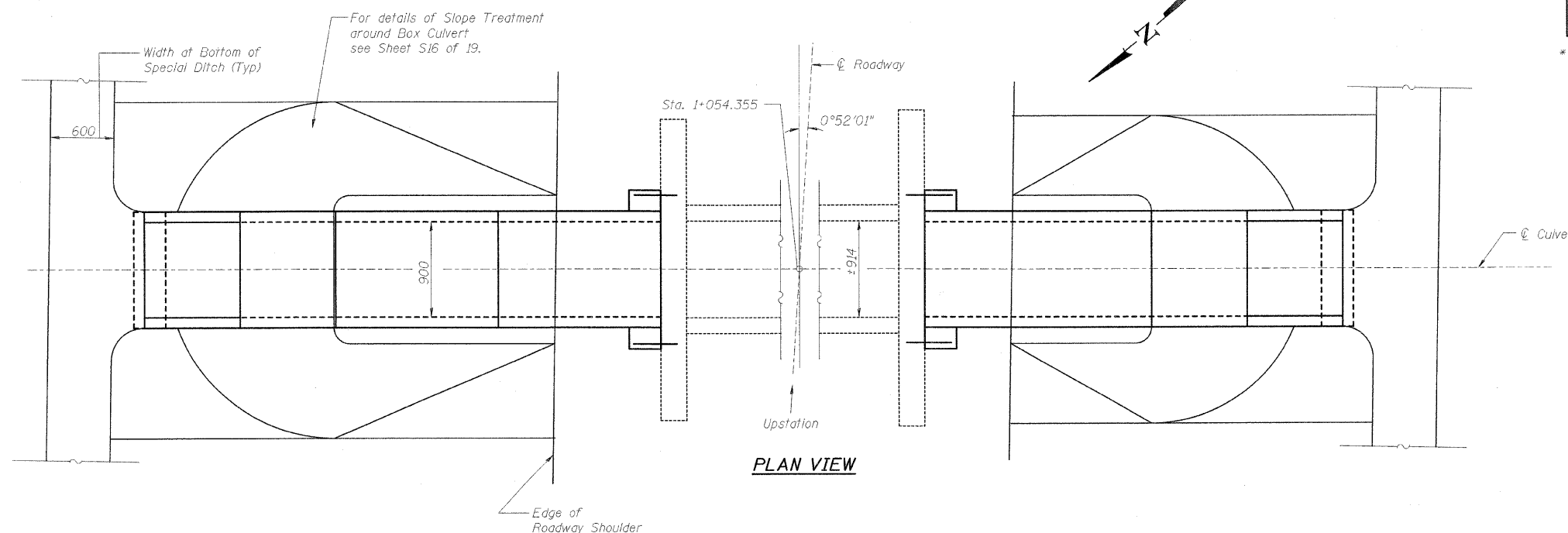


LONGITUDINAL SECTION

BILL OF MATERIAL - BOX CULVERT NO. 1

Item	Unit	Total
M5030350 Concrete Structures	cu. m.	0.5
M5080205 Reinforcement Bars, Epoxy Coated	kg	90
* Precast Concrete Box Culvert (900x450)	m	5.2
* 5401001 Box Culvert End Section, Culvert No. 1	Each	2
M5403220 Expansion Bolts (M20x250)	Each	21
M2810707 Stone Riprap, Class A4	sq. m.	See Plans
M5050405 Furnishing & Erecting Structural Steel	kg	130

* Non-standard size.



PLAN VIEW

REVISIONS		ILLINOIS DEPARTMENT OF TRANSPORTATION BOX CULVERT EXTENSIONS GENERAL PLAN & ELEVATION BOX CULV. NO. 1, STA. 1+054.355
NAME	DATE	
LWJ	2-02-09	SCALE NONE DATE DECEMBER 10, 2006 DRAWN BY MLB CHECKED BY MTH

LIN NO. 9803

PLOT DATE = 2/5/2009
FILE NAME = H:\1420\Contract 74349\SH1.130.LS-02.dgn