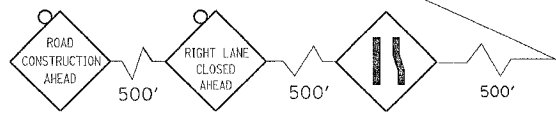
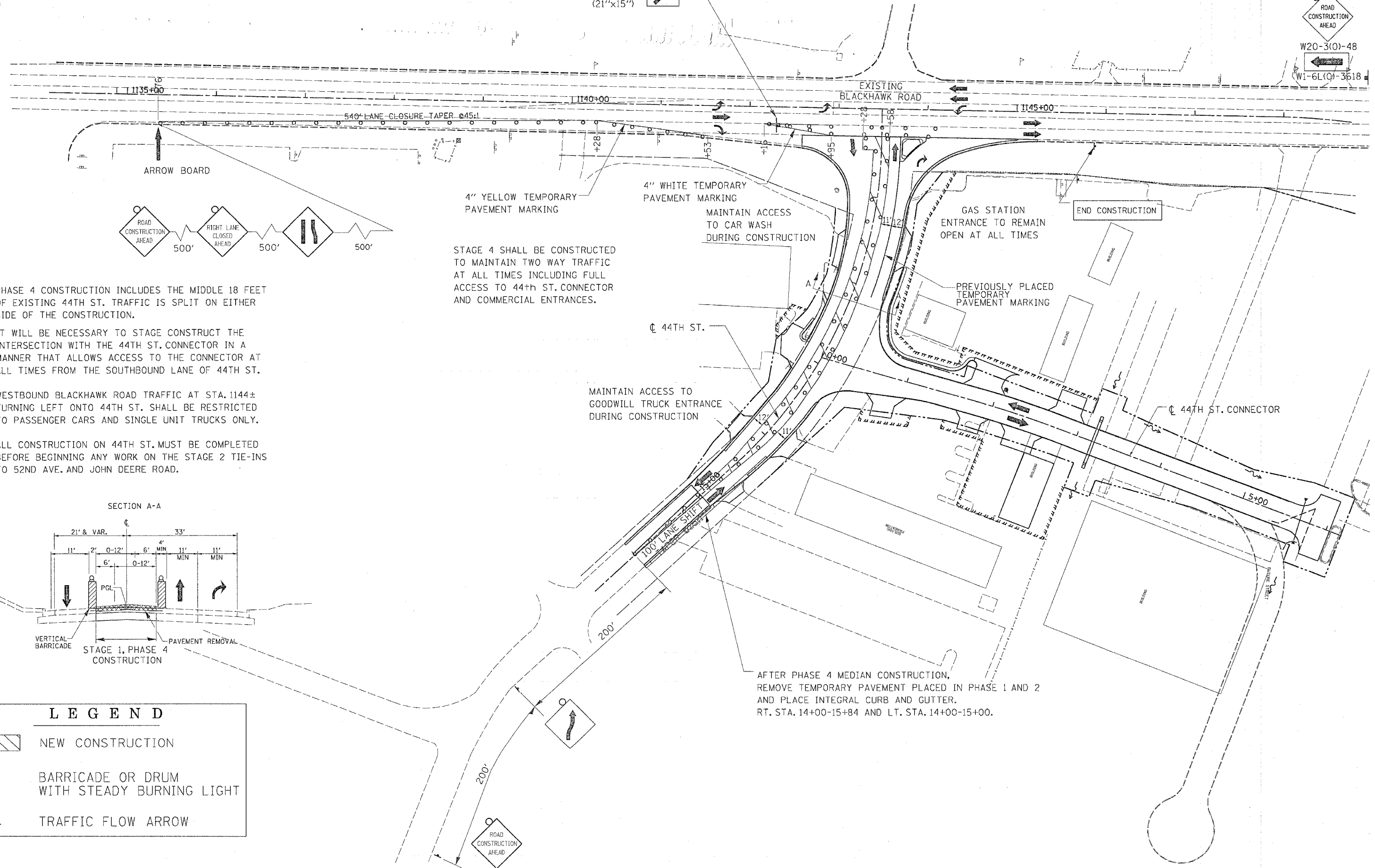


F.A.P. RTE.	SECTION	COUNTY	TOTAL SHEETS	SHEET NO.
595	1-3-K	ROCK ISLAND	476	67
STA.		TO STA.		
FED. ROAD DIST. NO.		ILLINOIS	FED. AID PROJECT	



R 3-1100R (24"x24")
M6-2R (21"x15")
RIGHT TURN LANE
PLACE SIGN PER DISTRICT STANDARD 94.2



NOTE: PHASE 4 CONSTRUCTION INCLUDES THE MIDDLE 18 FEET OF EXISTING 44TH ST. TRAFFIC IS SPLIT ON EITHER SIDE OF THE CONSTRUCTION.

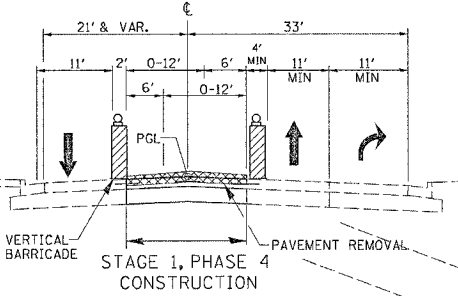
IT WILL BE NECESSARY TO STAGE CONSTRUCT THE INTERSECTION WITH THE 44TH ST. CONNECTOR IN A MANNER THAT ALLOWS ACCESS TO THE CONNECTOR AT ALL TIMES FROM THE SOUTHBOUND LANE OF 44TH ST.

WESTBOUND BLACKHAWK ROAD TRAFFIC AT STA. 1144± TURNING LEFT ONTO 44TH ST. SHALL BE RESTRICTED TO PASSENGER CARS AND SINGLE UNIT TRUCKS ONLY.

ALL CONSTRUCTION ON 44TH ST. MUST BE COMPLETED BEFORE BEGINNING ANY WORK ON THE STAGE 2 TIE-INS TO 52ND AVE. AND JOHN DEERE ROAD.

STAGE 4 SHALL BE CONSTRUCTED TO MAINTAIN TWO WAY TRAFFIC AT ALL TIMES INCLUDING FULL ACCESS TO 44th ST. CONNECTOR AND COMMERCIAL ENTRANCES.

SECTION A-A



LEGEND

- NEW CONSTRUCTION
- BARRICADE OR DRUM WITH STEADY BURNING LIGHT
- TRAFFIC FLOW ARROW

AFTER PHASE 4 MEDIAN CONSTRUCTION, REMOVE TEMPORARY PAVEMENT PLACED IN PHASE 1 AND 2 AND PLACE INTEGRAL CURB AND GUTTER. RT. STA. 14+00-15+84 AND LT. STA. 14+00-15+00.