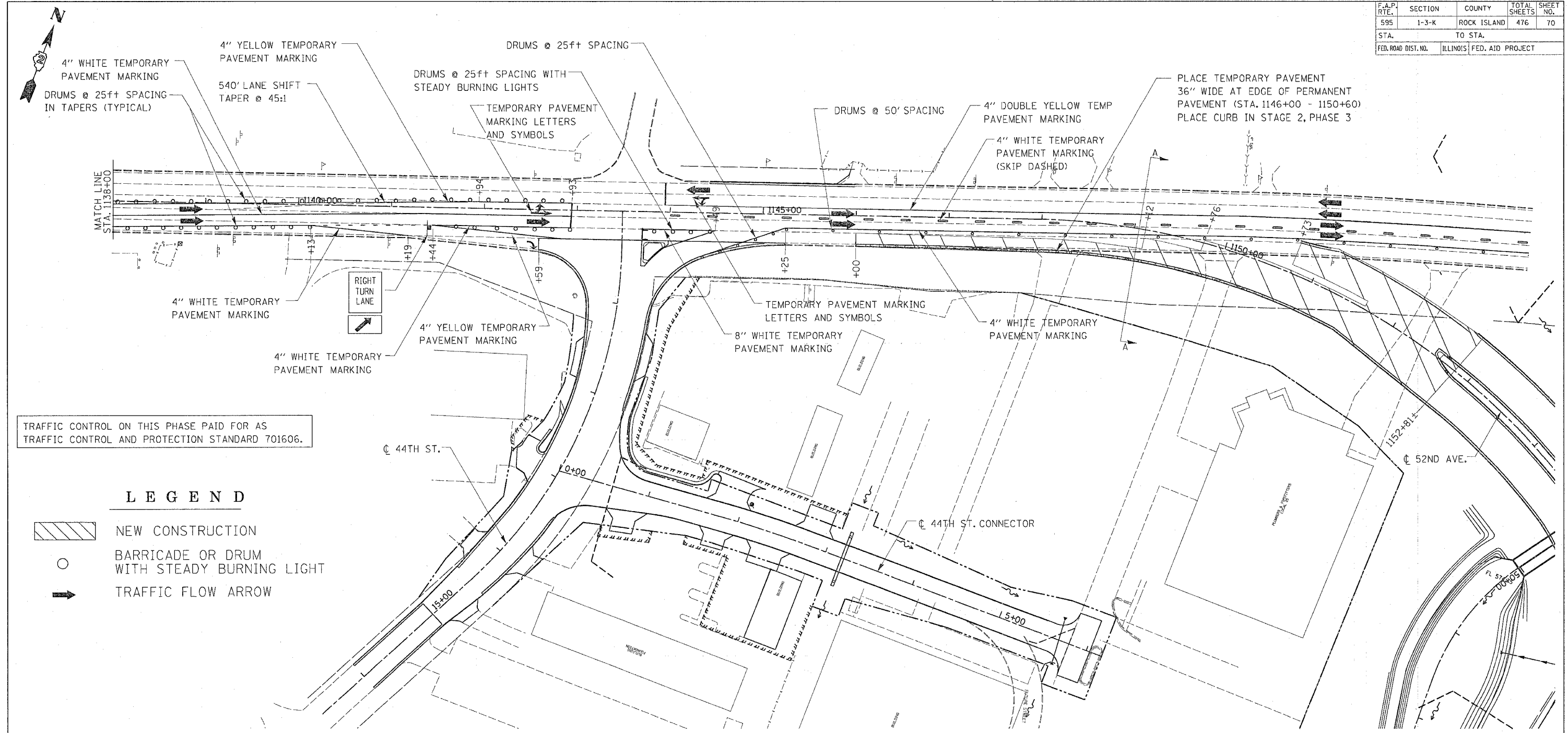
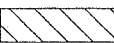




F.A.P. RTE.	SECTION	COUNTY	TOTAL SHEETS	SHEET NO.
595	1-3-K	ROCK ISLAND	476	70
STA.		TO STA.		
FED. ROAD DIST. NO.		ILLINOIS FED. AID PROJECT		



TRAFFIC CONTROL ON THIS PHASE PAID FOR AS TRAFFIC CONTROL AND PROTECTION STANDARD 701606.

**LEGEND**

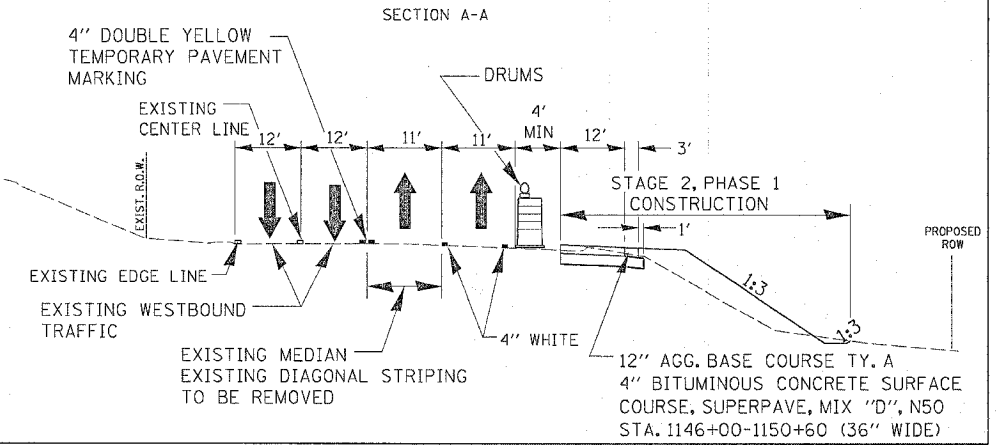
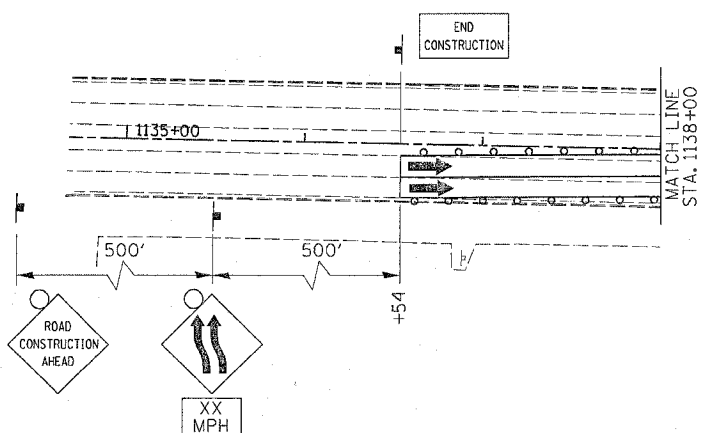
-  NEW CONSTRUCTION
-  BARRICADE OR DRUM WITH STEADY BURNING LIGHT
-  TRAFFIC FLOW ARROW

**NOTE:**

**STAGE 2 GENERAL**

DURING STAGE 2, CONSTRUCTION WILL BE COMPLETED ON 52ND AVE. AND JOHN DEERE/BLACKHAWK RD. EXCEPT FOR THE MEDIAN FROM STA. 1148+44 ± - 1151+63 ± AND VALLEY VIEW DR. IT IS ANTICIPATED THAT THE MILAN BELTWAY SOUTH OF THE ROCK RIVER AS WELL AS THE ROCK RIVER BRIDGE WILL BE OPEN TO TRAFFIC FOR PHASE 3 OF THE STAGE 2 WORK.

PHASE 1 THIS PHASE INVOLVES CONSTRUCTION OF THE JOHN DEERE RD. TIE-INS SHADED ON THE DETAIL SHEETS, AS WELL AS TEMPORARY PAVEMENT. TWO-LANE, TWO-WAY TRAFFIC WILL BE MAINTAINED ON JOHN DEERE RD. AT 44TH ST., THE EASTBOUND AND WESTBOUND LEFT TURN LANES ARE ELIMINATED AND BOTH BECOME SHARED THRU PLUS LEFT TURN LANE. SIGNAL PHASING AT 44TH ST. WILL REMAIN THE SAME WITH AN ADVANCE WESTBOUND MOVEMENT. WESTBOUND 52ND AVE. IS OPEN BETWEEN 7TH ST. AND THE TRINITY DRIVE.



**STAGE 2 BLACKHAWK ROAD/JOHN DEERE EXPRESSWAY PHASE 1 CONSTRUCTION PLAN**