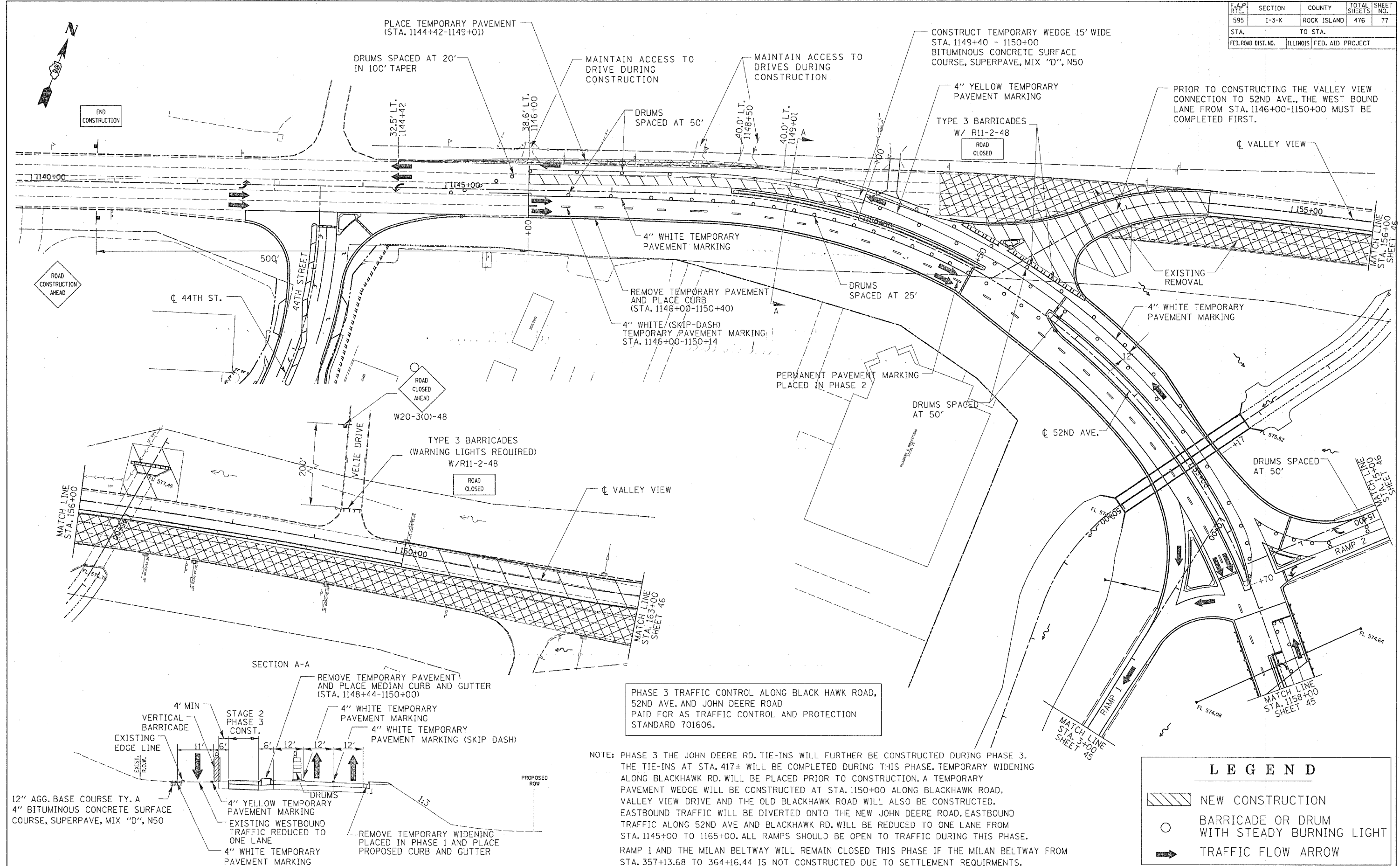
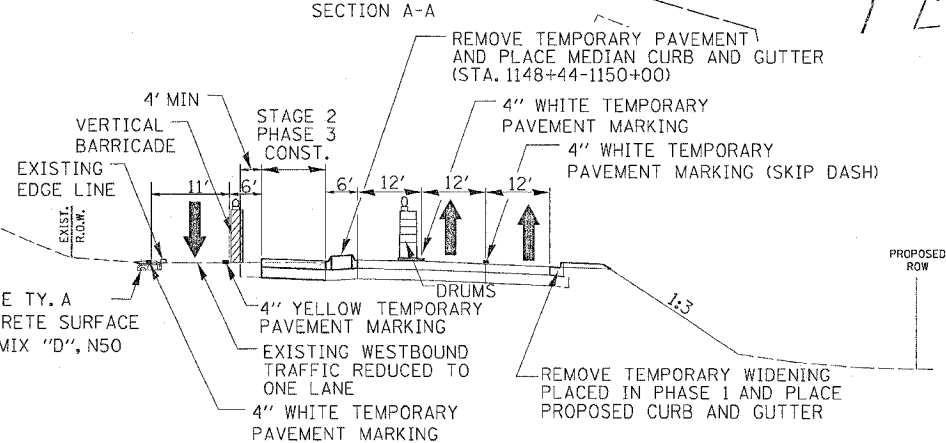


F.A.P. RTE.	SECTION	COUNTY	TOTAL SHEETS	SHEET NO.
595	1-3-K	ROCK ISLAND	476	77
STA. 1140+00		TO STA. 1155+00		
FED. ROAD DIST. NO.		ILLINOIS FED. AID PROJECT		



PHASE 3 TRAFFIC CONTROL ALONG BLACK HAWK ROAD, 52ND AVE. AND JOHN DEERE ROAD PAID FOR AS TRAFFIC CONTROL AND PROTECTION STANDARD 701606.

NOTE: PHASE 3 THE JOHN DEERE RD. TIE-INS WILL FURTHER BE CONSTRUCTED DURING PHASE 3. THE TIE-INS AT STA. 417± WILL BE COMPLETED DURING THIS PHASE. TEMPORARY WIDENING ALONG BLACKHAWK RD. WILL BE PLACED PRIOR TO CONSTRUCTION. A TEMPORARY PAVEMENT WEDGE WILL BE CONSTRUCTED AT STA. 1150+00 ALONG BLACKHAWK ROAD. VALLEY VIEW DRIVE AND THE OLD BLACKHAWK ROAD WILL ALSO BE CONSTRUCTED. EASTBOUND TRAFFIC WILL BE DIVERTED ONTO THE NEW JOHN DEERE ROAD. EASTBOUND TRAFFIC ALONG 52ND AVE AND BLACKHAWK RD. WILL BE REDUCED TO ONE LANE FROM STA. 1145+00 TO 1165+00. ALL RAMPS SHOULD BE OPEN TO TRAFFIC DURING THIS PHASE. RAMP 1 AND THE MILAN BELTWAY WILL REMAIN CLOSED THIS PHASE IF THE MILAN BELTWAY FROM STA. 357+13.68 TO 364+16.44 IS NOT CONSTRUCTED DUE TO SETTLEMENT REQUIREMENTS.



LEGEND	
	NEW CONSTRUCTION
	BARRICADE OR DRUM WITH STEADY BURNING LIGHT
	TRAFFIC FLOW ARROW

STAGE 2 BLACKHAWK ROAD/JOHN DEERE EXPRESSWAY PHASE 3 CONSTRUCTION PLAN