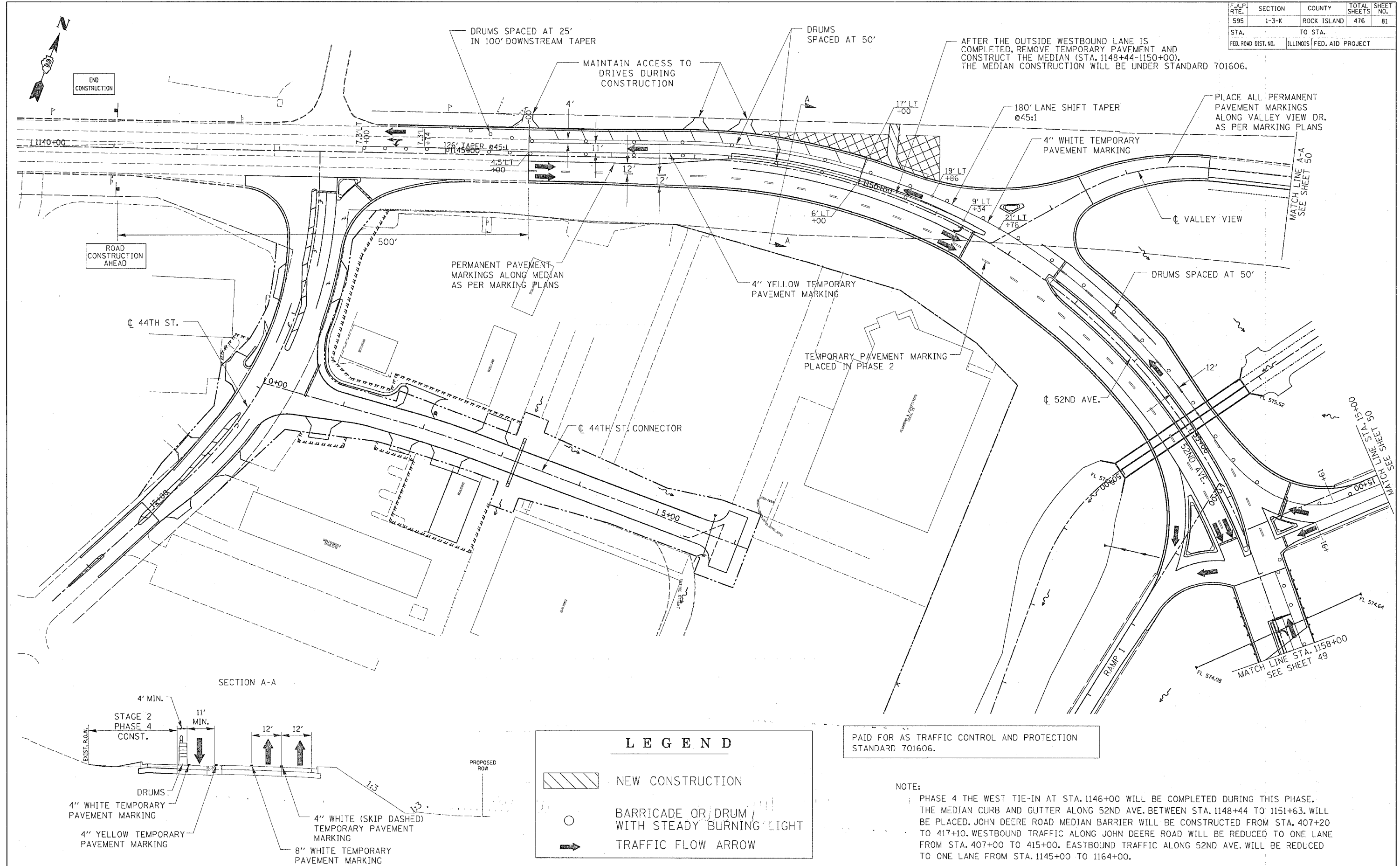


F.A.P. RTE.	SECTION	COUNTY	TOTAL SHEETS	SHEET NO.
595	1-3-K	ROCK ISLAND	476	81
STA.		TO STA.		
FED. ROAD DIST. NO.		ILLINOIS FED. AID PROJECT		



END CONSTRUCTION

ROAD CONSTRUCTION AHEAD

DRUMS SPACED AT 25' IN 100' DOWNSTREAM TAPER

DRUMS SPACED AT 50'

AFTER THE OUTSIDE WESTBOUND LANE IS COMPLETED, REMOVE TEMPORARY PAVEMENT AND CONSTRUCT THE MEDIAN (STA. 1148+44-1150+00). THE MEDIAN CONSTRUCTION WILL BE UNDER STANDARD 701606.

PLACE ALL PERMANENT PAVEMENT MARKINGS ALONG VALLEY VIEW DR. AS PER MARKING PLANS

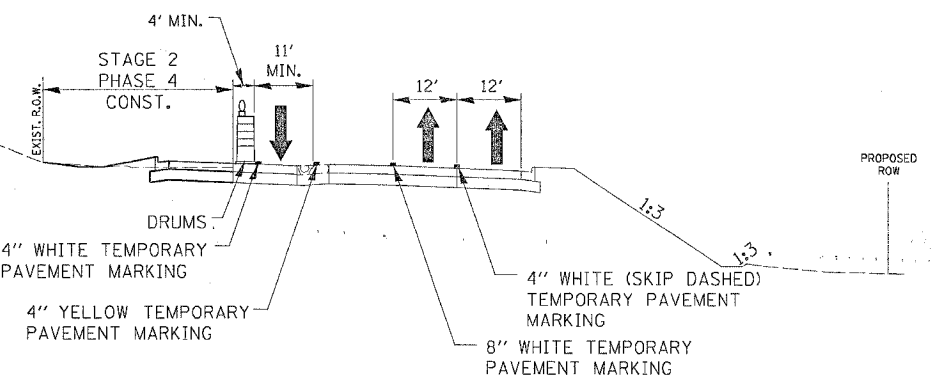
PERMANENT PAVEMENT MARKINGS ALONG MEDIAN AS PER MARKING PLANS

4" YELLOW TEMPORARY PAVEMENT MARKING

TEMPORARY PAVEMENT MARKING PLACED IN PHASE 2

DRUMS SPACED AT 50'

SECTION A-A



LEGEND

- NEW CONSTRUCTION
- BARRICADE OR DRUM WITH STEADY BURNING LIGHT
- TRAFFIC FLOW ARROW

PAID FOR AS TRAFFIC CONTROL AND PROTECTION STANDARD 701606.

NOTE:
 PHASE 4 THE WEST TIE-IN AT STA. 1146+00 WILL BE COMPLETED DURING THIS PHASE. THE MEDIAN CURB AND GUTTER ALONG 52ND AVE. BETWEEN STA. 1148+44 TO 1151+63. WILL BE PLACED. JOHN DEERE ROAD MEDIAN BARRIER WILL BE CONSTRUCTED FROM STA. 407+20 TO 417+10. WESTBOUND TRAFFIC ALONG JOHN DEERE ROAD WILL BE REDUCED TO ONE LANE FROM STA. 407+00 TO 415+00. EASTBOUND TRAFFIC ALONG 52ND AVE. WILL BE REDUCED TO ONE LANE FROM STA. 1145+00 TO 1164+00.

STAGE 2 BLACKHAWK ROAD/JOHN DEERE EXPRESSWAY PHASE 4 CONSTRUCTION PLAN