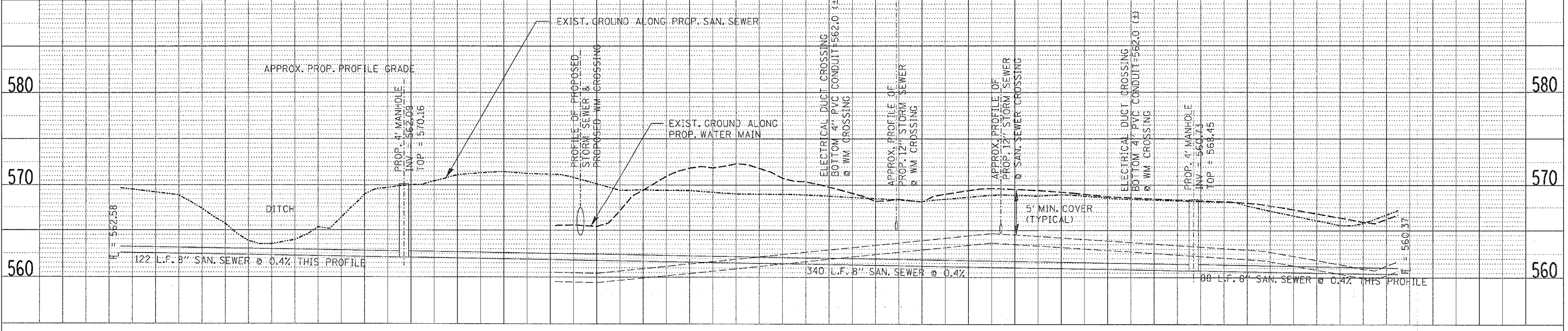
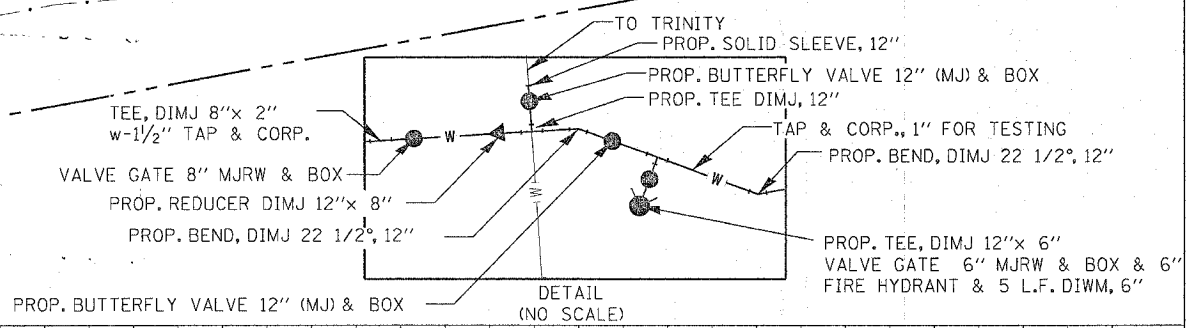
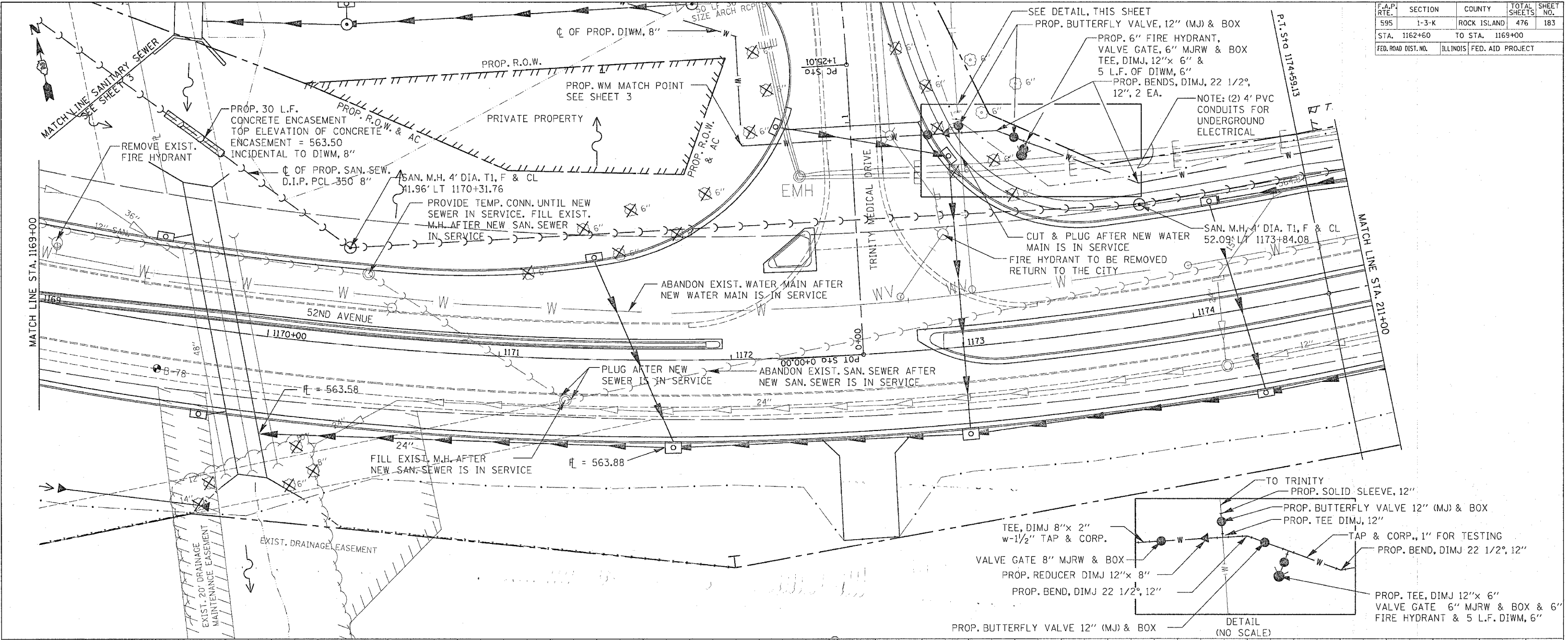


F.A.P. RTE.	SECTION	COUNTY	TOTAL SHEETS	SHEET NO.
595	1-3-K	ROCK ISLAND	476	183
STA. 1162+60		TO STA. 1169+00		
FED. ROAD DIST. NO.		ILLINOIS		FED. AID PROJECT

DATE	BY	REVISION

DATE	BY	REVISION



52ND AVENUE - STA. 1169+00 TO STA. 1174+59.13 BK - STA. 210+82.69 AH TO 211+00