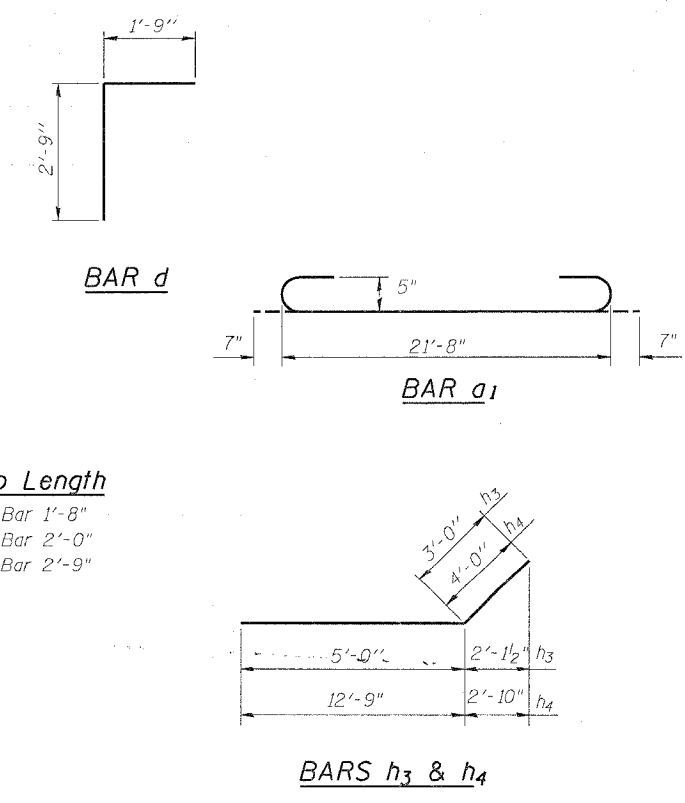
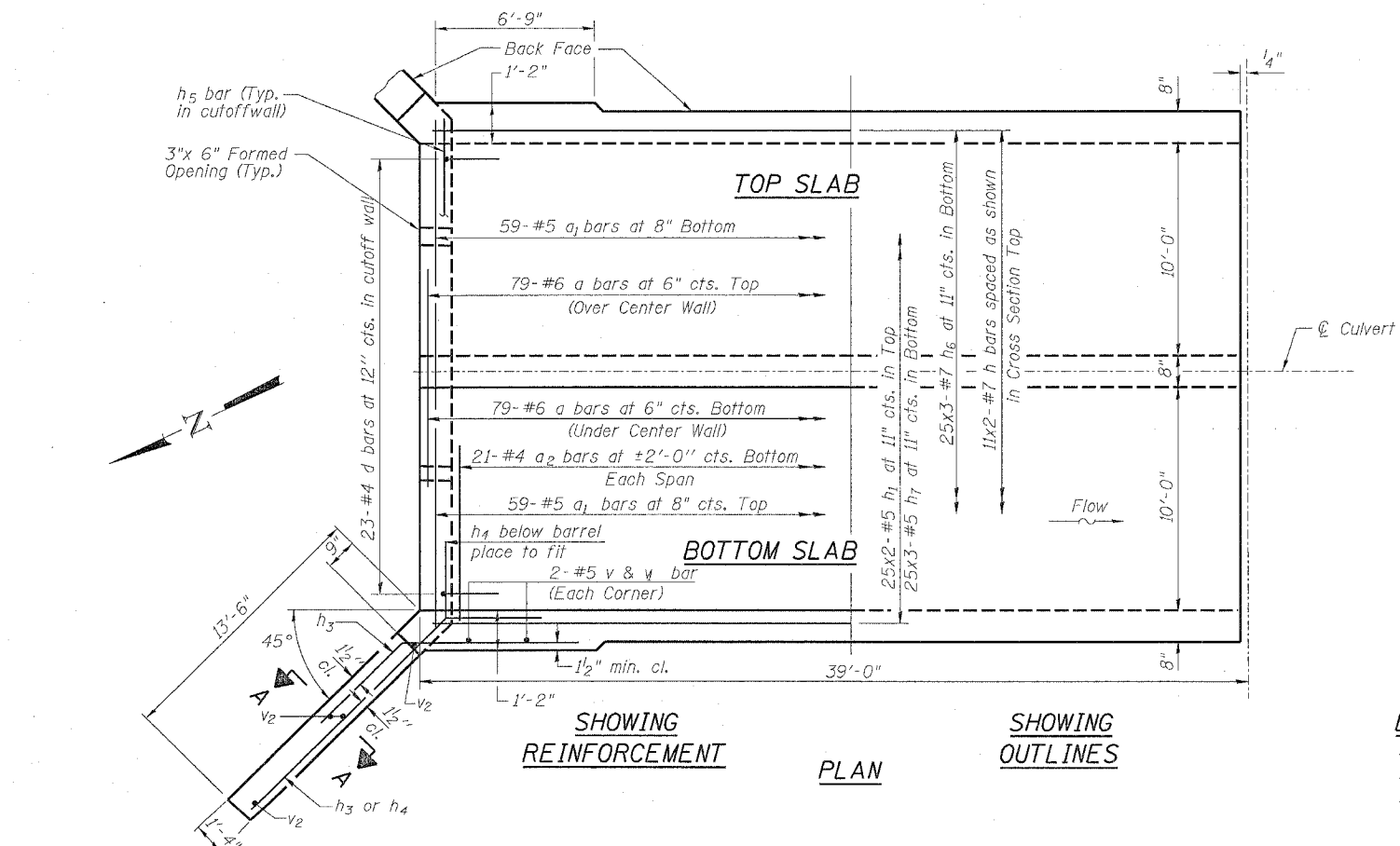
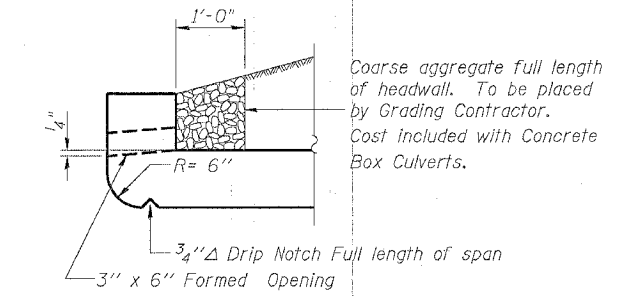
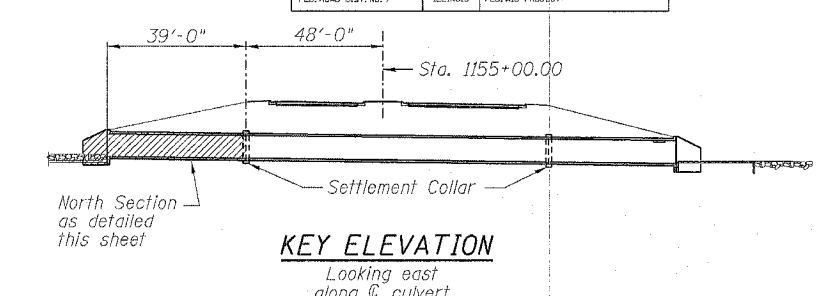
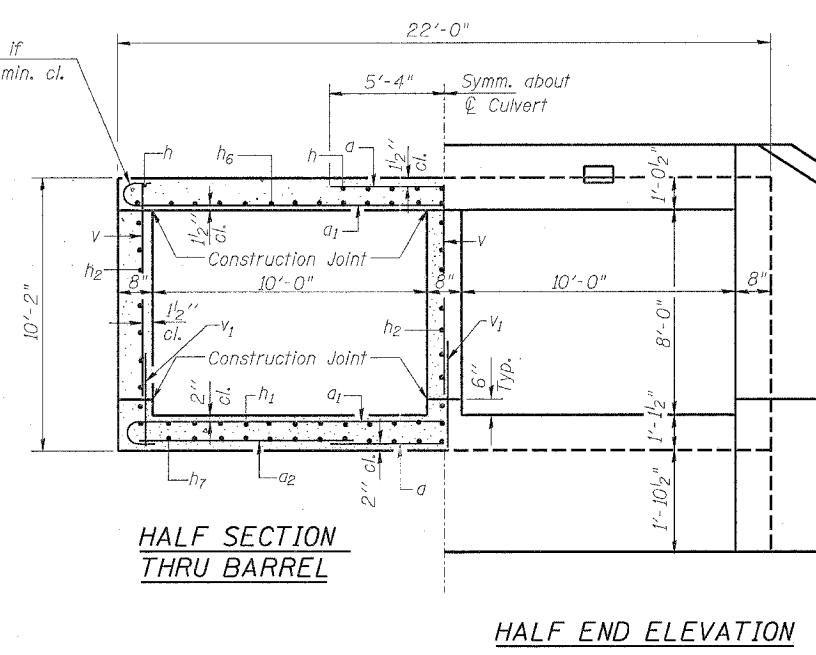
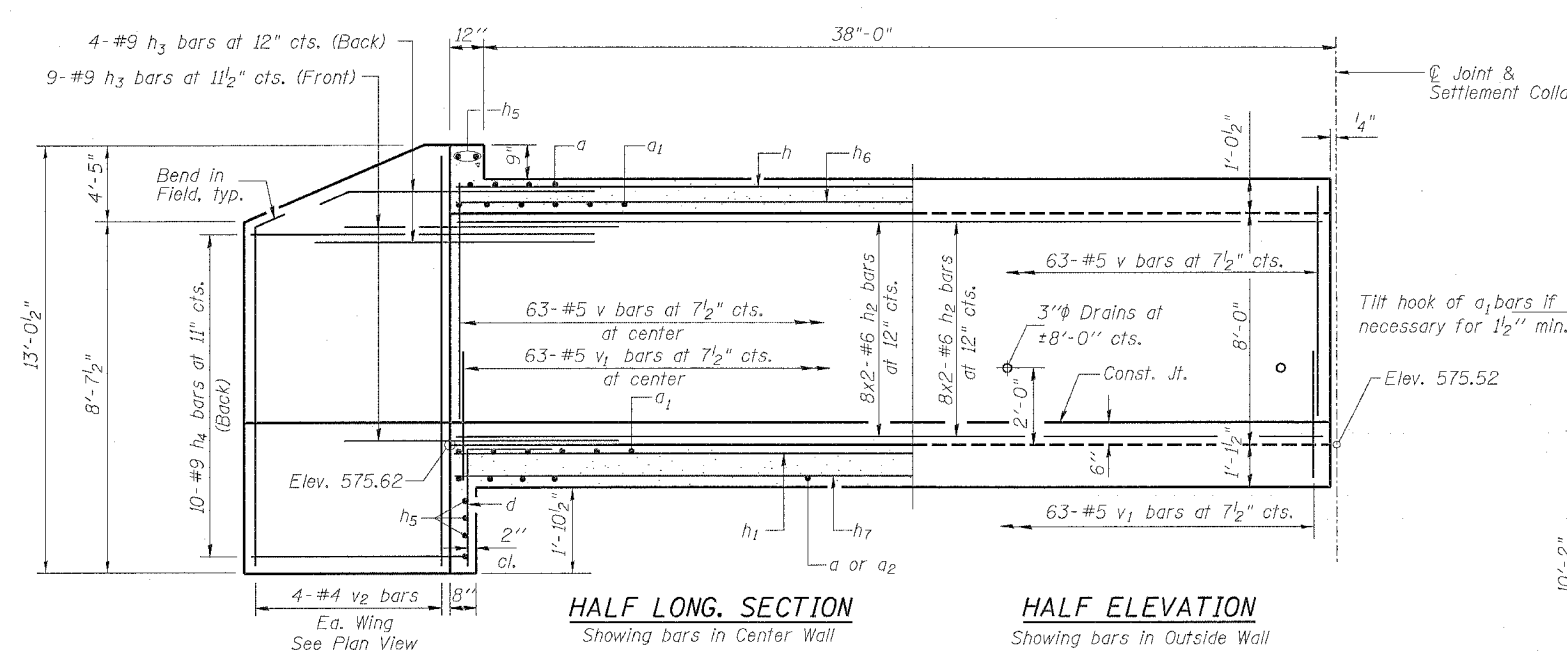


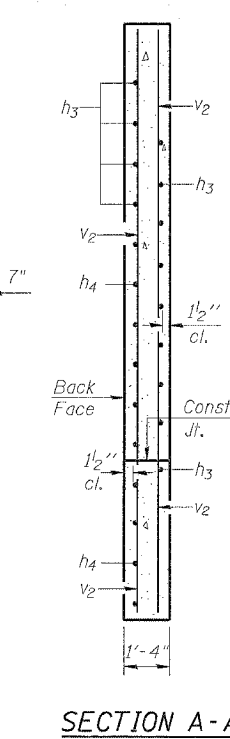
STATE OF ILLINOIS
DEPARTMENT OF TRANSPORTATION

ROUTE NO.	SECTION	COUNTY	SHEET NO.	SHEET	SHEET NO.
F.A.P. 595	I-3-K	Rock Island	476	275	7 SHEETS
FED. ROAD DIST. NO. 7	ILLINOIS	FED. AID PROJECT			



BILL OF MATERIAL NORTH SECTION

Bar	No.	Size	Length	Shape
a	158	#6	10'-8"	—
a_1	118	#5	22'-10"	—
a_2	42	#4	6'-10"	—
d	23	#4	4'-6"	—
h	22	#7	20'-8"	—
h_1	50	#5	20'-1"	—
h_2	48	#6	20'-3"	—
h_3	26	#9	8'-0"	—
h_4	20	#9	16'-9"	—
h_5	5	#6	21'-8"	—
h_6	75	#7	14'-9"	—
h_7	75	#5	14'-0"	—
v	193	#5	8'-2"	—
v_1	193	#5	3'-4"	—
v_2	8	#4	12'-6"	—
Concrete Box Culverts			Cu. Yd.	110.9
Reinforcement Bars			Pound	16,790



CULVERT DETAILS AND SECTION

52ND AVENUE EXTENSION
OVER AN UNNAMED STREAM
FAU ROUTE 5822 SECTION I-3
ROCK ISLAND COUNTY
STATION 1155+00
STRUCTURE NO. 081-2035

DESIGNED	JDC
CHECKED	BDF
DRAWN	RAP
CHECKED	BDF

DB-H-0 10-31-02