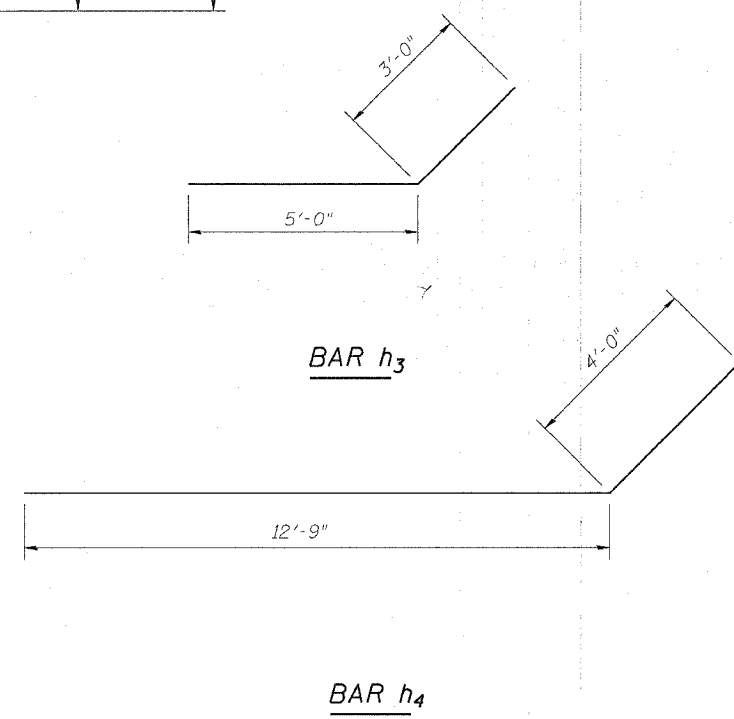
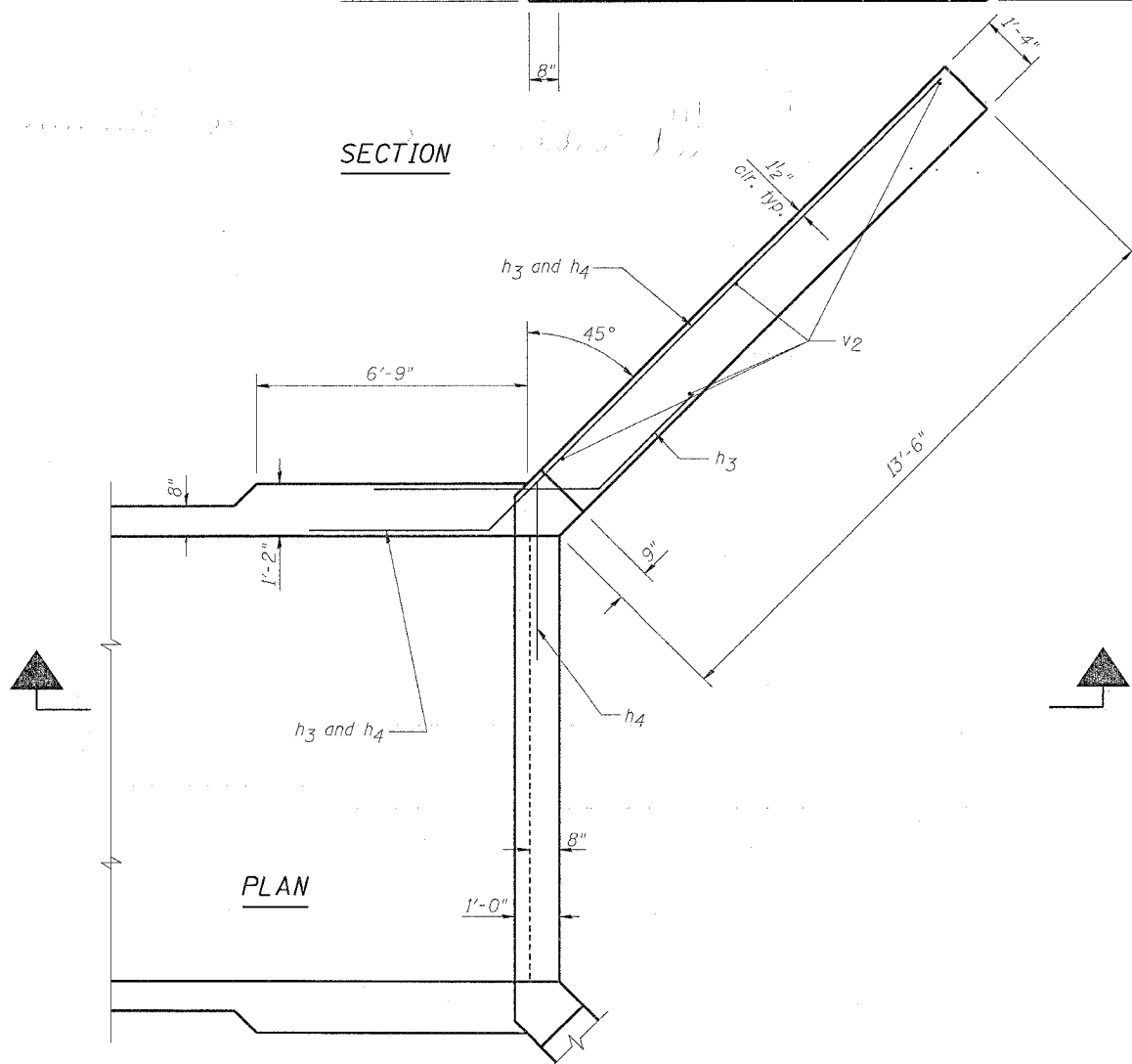
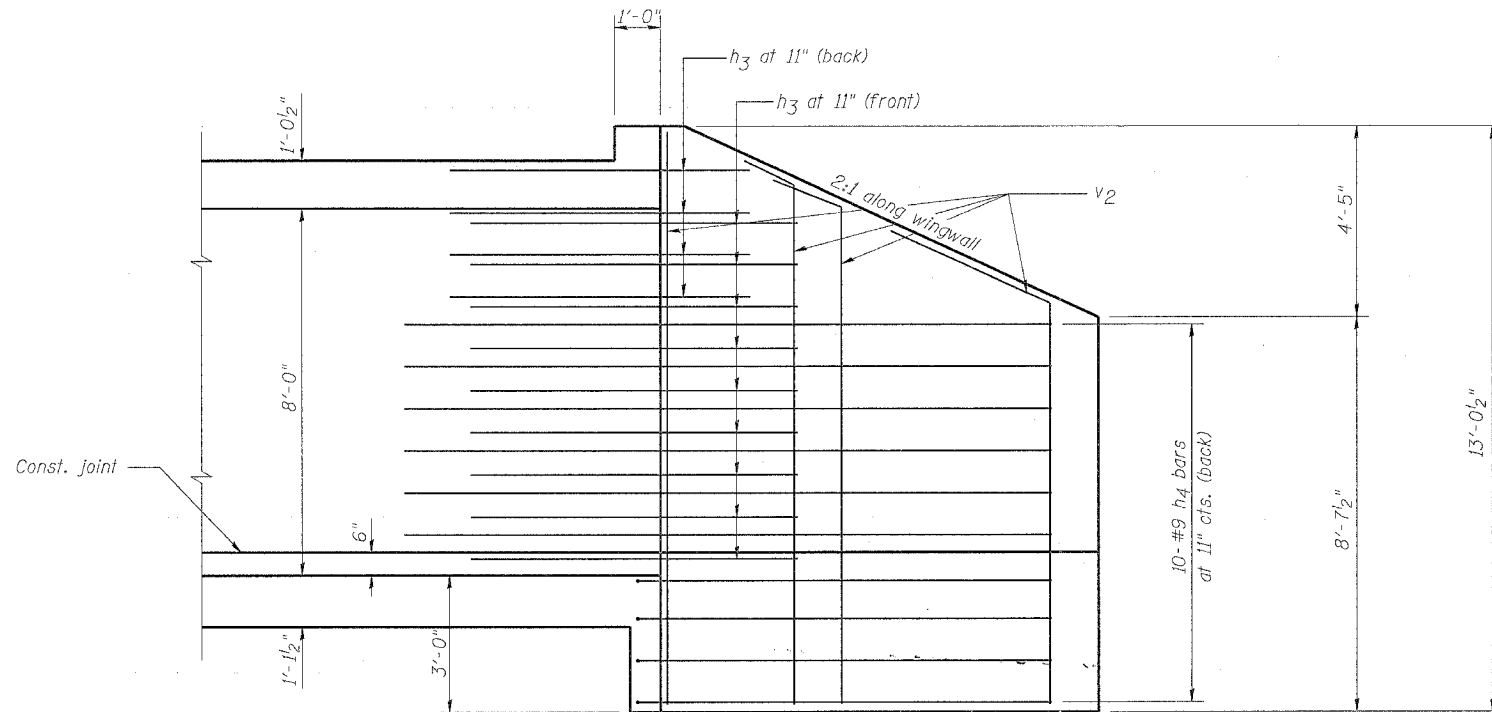


STATE OF ILLINOIS  
DEPARTMENT OF TRANSPORTATION

ROUTE NO.	SECTION	COUNTY	POST MILES	SHEET NO.
F.A.P. 595	1-3-K	Rock Island	476	279
FED. ROAD DIST. NO. 7	ILLINOIS	FED. AID PROJECT-		

SHEET NO. 6  
7 SHEETS



DESIGNED	JDC
CHECKED	BDF
DRAWN	JDC
CHECKED	BDF

WINGWALL REINFORCEMENT DETAILS

52ND AVENUE EXTENSION  
OVER AN UNNAMED STREAM  
FAU ROUTE 5822 SECTION 1-3  
ROCK ISLAND COUNTY  
STATION 1155+00  
STRUCTURE NO. 081-2035