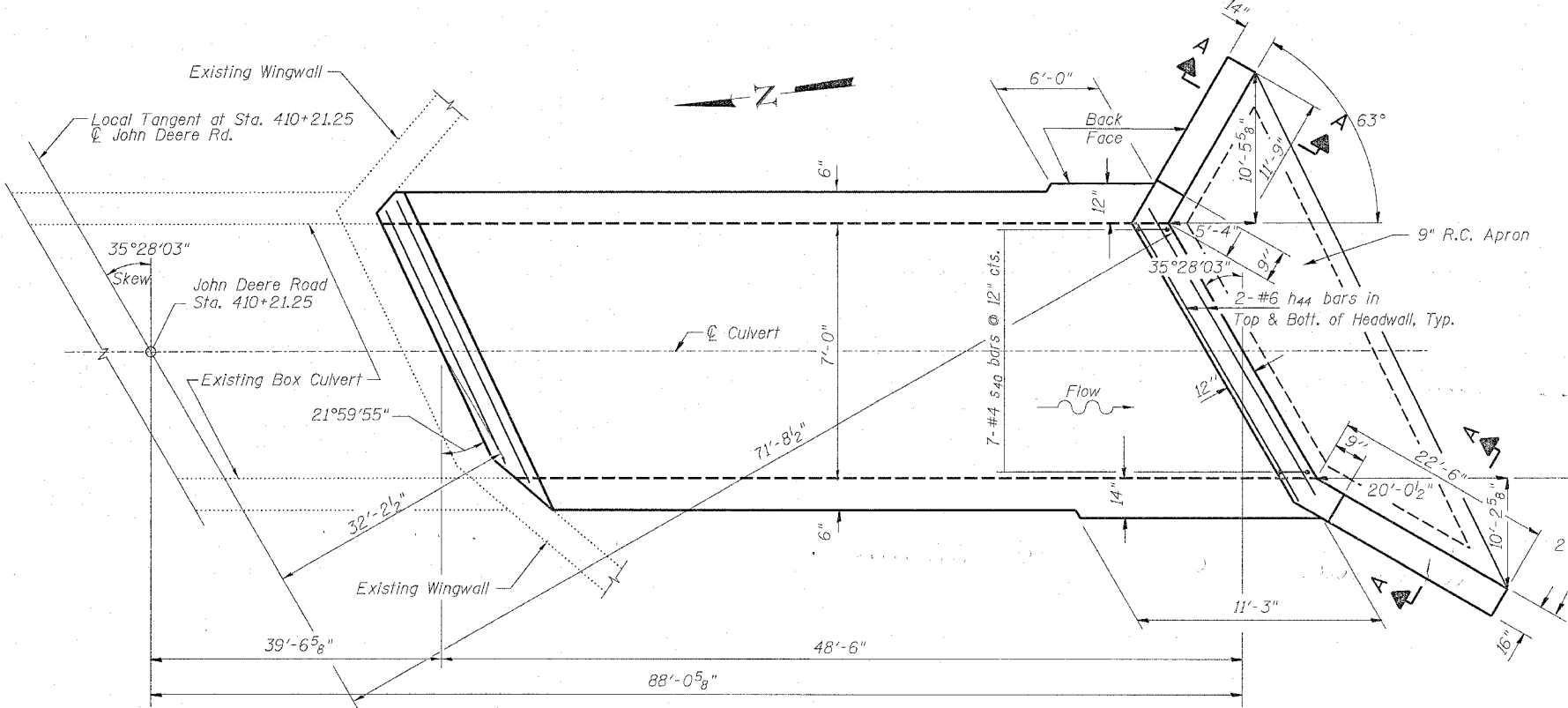
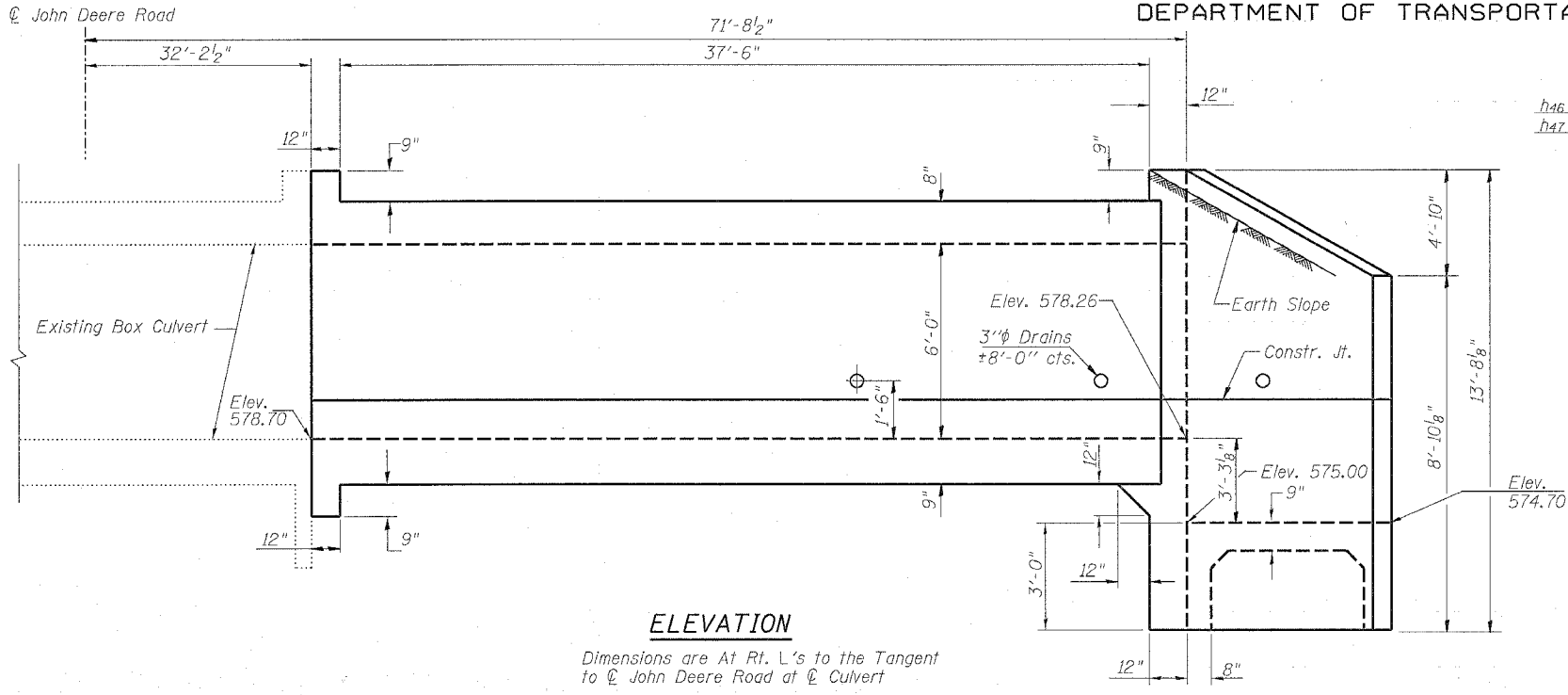


STATE OF ILLINOIS
DEPARTMENT OF TRANSPORTATION

ROUTE NO.	SECTION	COUNTY	FEET	SHEET	SHEET NO. 4 5 SHEETS
F.A.P. 595	I-3-K	Rock Island	476	284	
FED. ROAD DIST. NO. 7	BALTIMOR	FED. AID PROJECT			

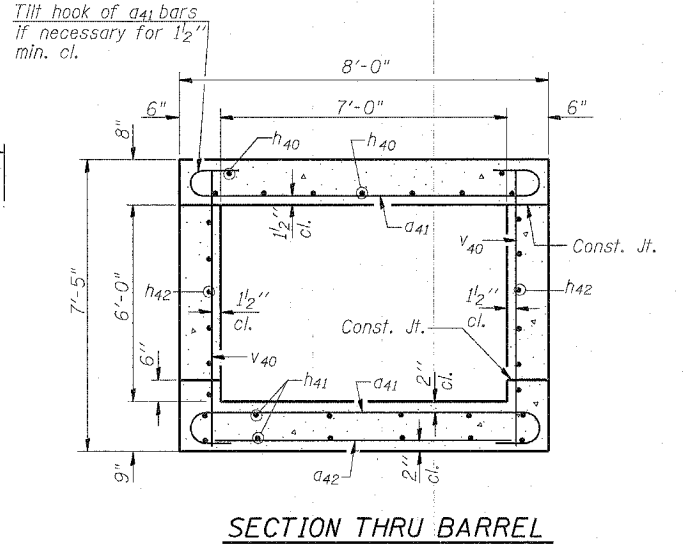
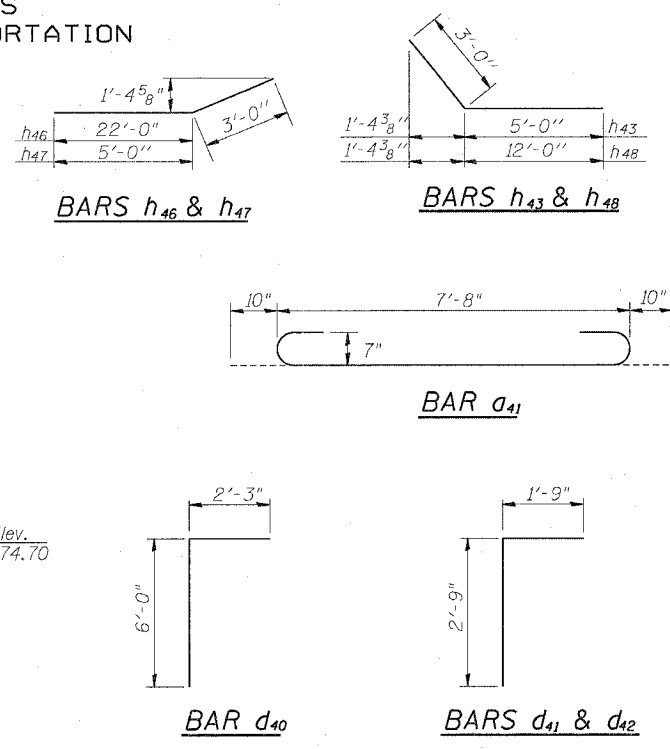


DESIGNED	JDC
CHECKED	BDF
DRAWN	RAP
CHECKED	BDF

NOTES

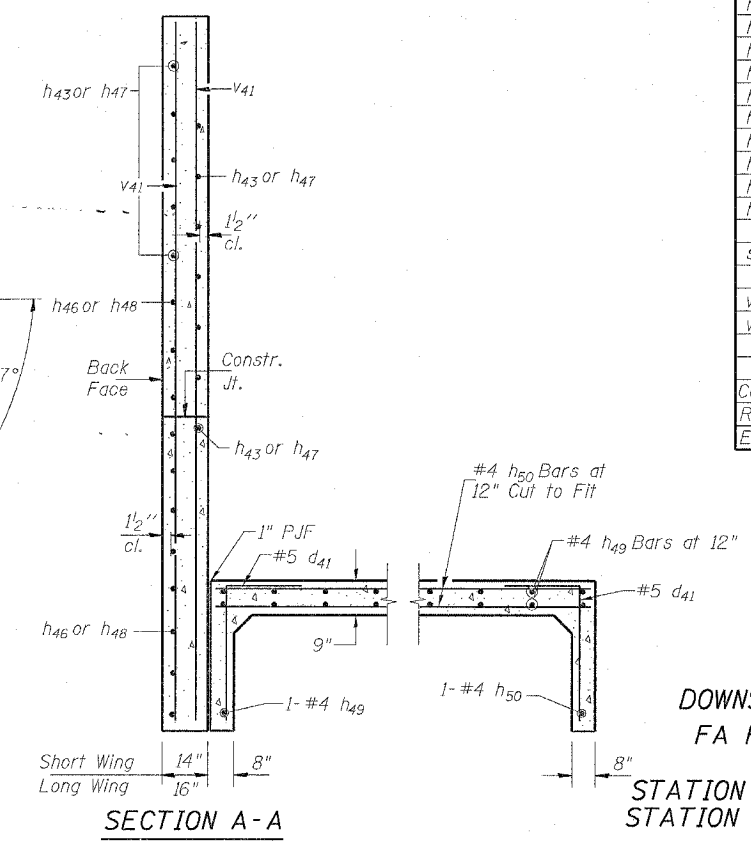
A distance of half the length of the wingwall but not less than six feet of the barrel shall be poured monolithically with the wingwalls.
 Reinforcement Bars shall conform to the requirements of AASHTO M-31, M-42 or M-53, Grade 60.
 Bars indicated thus 12 x 4-#5 etc. indicates 12 lines of bars with 4 lengths per line.
 All construction joints shall be bonded.
 Precast Culvert alternate is not allowed.

DESIGN STRESSES
 $f_y = 60,000 \text{ psi}$
 $f'_c = 3,500 \text{ psi}$
LOADING HS 20-44 & ALT.



BILL OF MATERIAL

Bar	No.	Size	Length	Shape
d41	180	#7	9'-4"	U
d42	26	#4	7'-3"	U
d40	13	#5	8'-3"	U
d41	71	#4	4'-6"	U
d42	13	#5	4'-6"	U
h40	18	#6	25'-7"	U
h41	24	#5	25'-7"	U
h42	24	#5	25'-7"	U
h43	12	#7	8'-0"	U
h44	14	#6	9'-3"	U
h46	11	#9	25'-0"	U
h47	12	#9	8'-0"	U
h48	11	#7	15'-0"	U
h49	66	#4	9'-11"	U
h50	24	#4	32'-6"	U
s40	7	#4	4'-6"	□
V40	135	#4	7'-0"	U
V41	8	#4	13'-2"	U
Concrete Box Culverts	Cu. Yd.	65.7		
Reinforcement Bars	Pound	9,600		
Expansion Bolts 3/4" ϕ	Each	16		



DOWNSTREAM EXTENSION DETAILS
 FA ROUTE 595 SECTION I-3-K
 ROCK ISLAND COUNTY
 STATION 410+21.25 (JOHN DEERE ROAD)
 STATION 167+88.19 (VALLEY VIEW DRIVE)