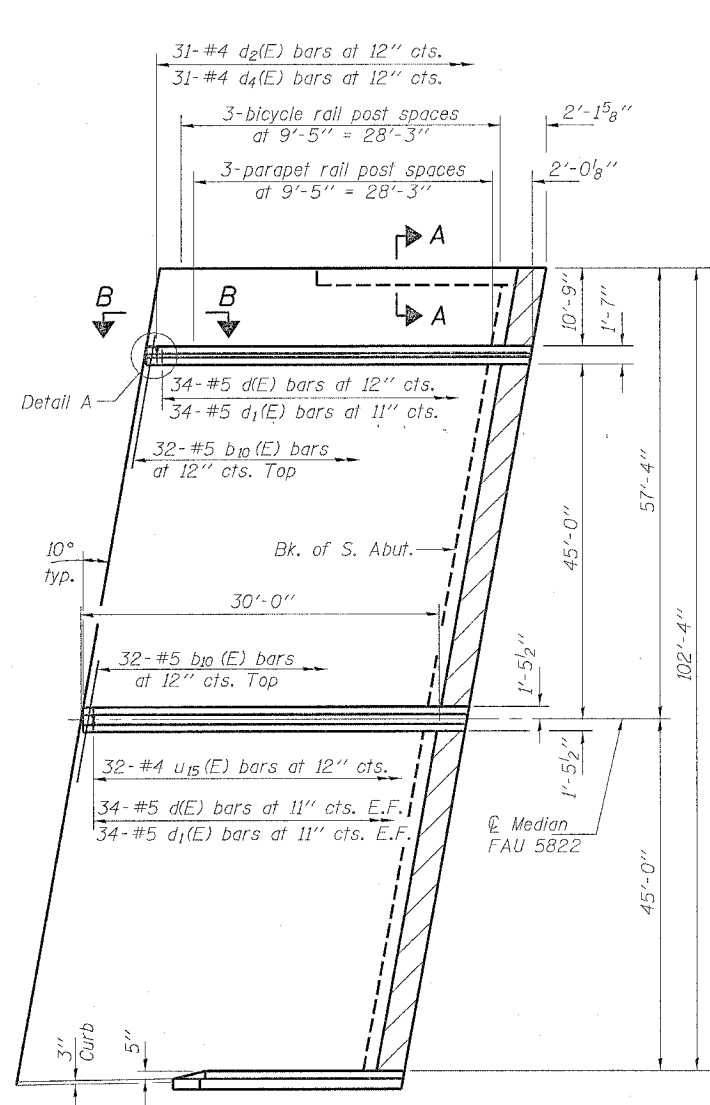


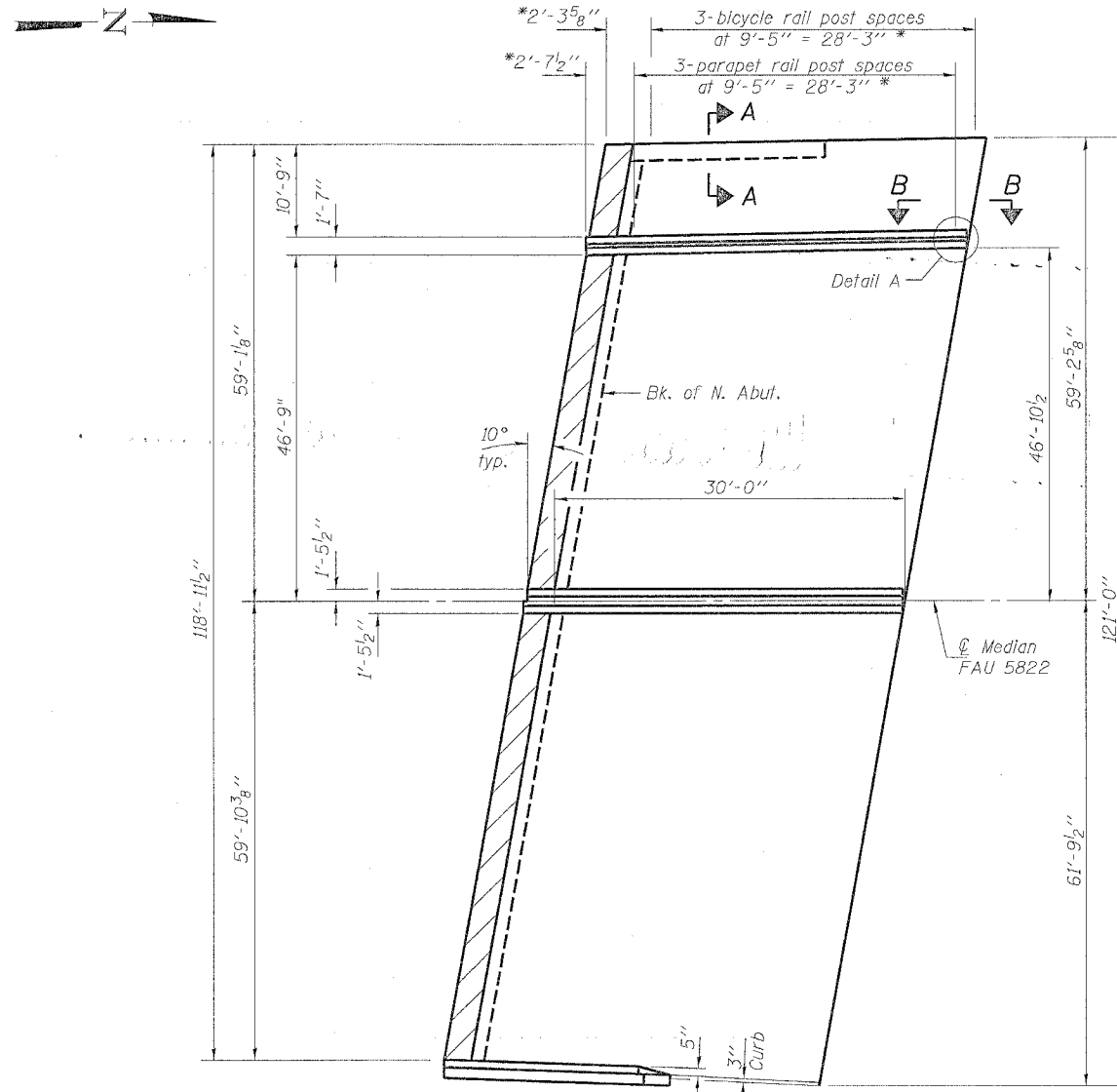
STATE OF ILLINOIS  
DEPARTMENT OF TRANSPORTATION

| ROUTE NO.             | SECTION  | COUNTY            | LENG.<br>STATIONING | SHEET<br>NO. | SHEET NO. |
|-----------------------|----------|-------------------|---------------------|--------------|-----------|
| FAP<br>595            | I-3-K    | Rock Island       | 476                 | 289A         | SHEETS    |
| FED. ROAD DIST. NO. 7 | ILLINOIS | FED. AID PROJECT- |                     |              |           |

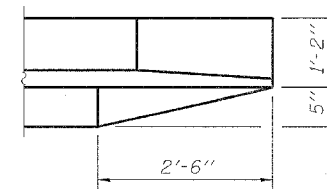


**PLAN VIEW**

(Dimensions are at right L's to @ Median unless noted otherwise).  
(Reinforcement shown for South bridge approach pavement. North approach pavement similar).

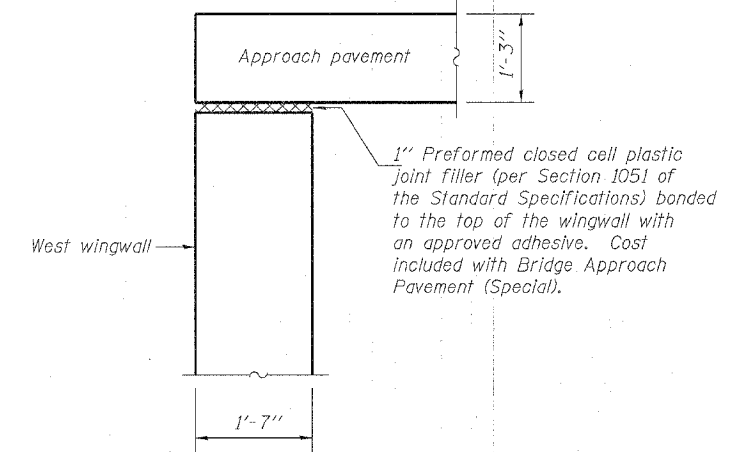


\* Measured along the flare.

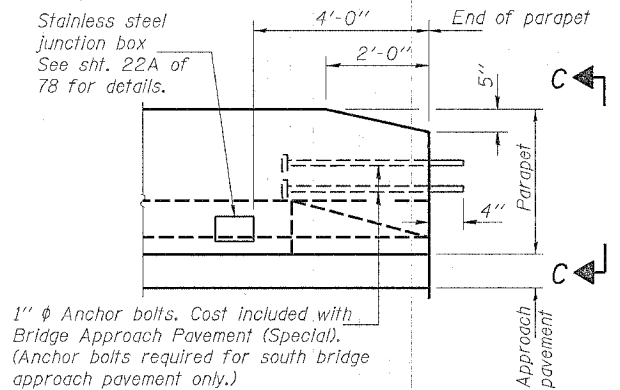


**DETAIL A**

(North bridge approach pavement shown;  
South bridge approach pavement similar.)

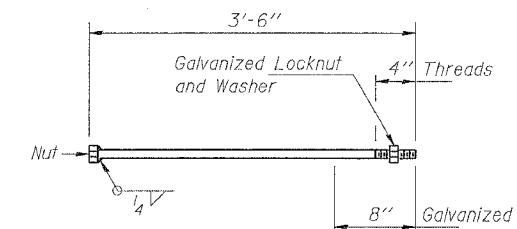


**SECTION A-A**

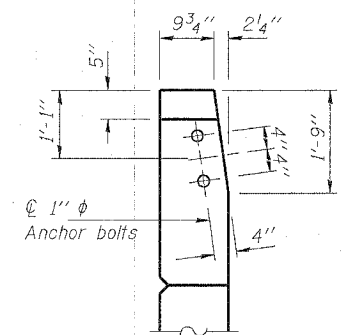


**SECTION B-B**

(South bridge approach pavement shown;  
North bridge approach pavement similar.)



**1" Ø ANCHOR BOLT**



**VIEW C-C**

Notes: See Standard 42Q401 for additional bridge approach pavement details not shown on sheets 66 & 67 of 78. For quantity of bridge approach pavement (Special), see roadway plans.  
Work this sheet with sheet 67 of 78.  
See expansion joint details on sheet 24 thru 30 of 78 for end treatment of concrete parapets at expansion joints.  
See sheet 32 of 78 for railing details.

|          |                                    |
|----------|------------------------------------|
| DESIGNED | EXAMINED                           |
| CHECKED  | ENGINEER OF BRIDGE DESIGN          |
| DRAWN    | PASSED                             |
| CHECKED  | ENGINEER OF BRIDGES AND STRUCTURES |