

BENCHMARK:
RAILROAD SPIKE IN POWER POLE
STA. 458+88.4, 72.2' LT
ELEVATION = 627.54

STA. 457+20.7, 40.9' LT
PRC FLARED END SECTION 24"
E = 615.5

STA. 457+10, 16' LT
MANHOLE, TY A, 5' DIA., TY 12 FR & GR FLAT TOP
RIM ELEV = 662.13
E W = 616.00
E E = 616.10

STA. 457+04.5, 11' RT
MANHOLE, TY A, 5' DIA., TY 1 FR, CL FLAT TOP
RIM ELEV = 662.16
E W = 616.60
E S (EX) = 617.44 (EST.)
E N = 618.90

STA. 457+10, 14' RT
INLET, TY A, TY 12 FR & GR
RIM ELEV = 622.13
E = 619.05

F.A.P. RTE.	SECTION	COUNTY	TOTAL SHEETS	SHEET NO.
840	(139Z-1)I	KANKAKEE	24	8
STA. 454+00		TO STA. 460+00		
FED. ROAD DIST. NO.	ILLINOIS	FED. AID PROJECT		

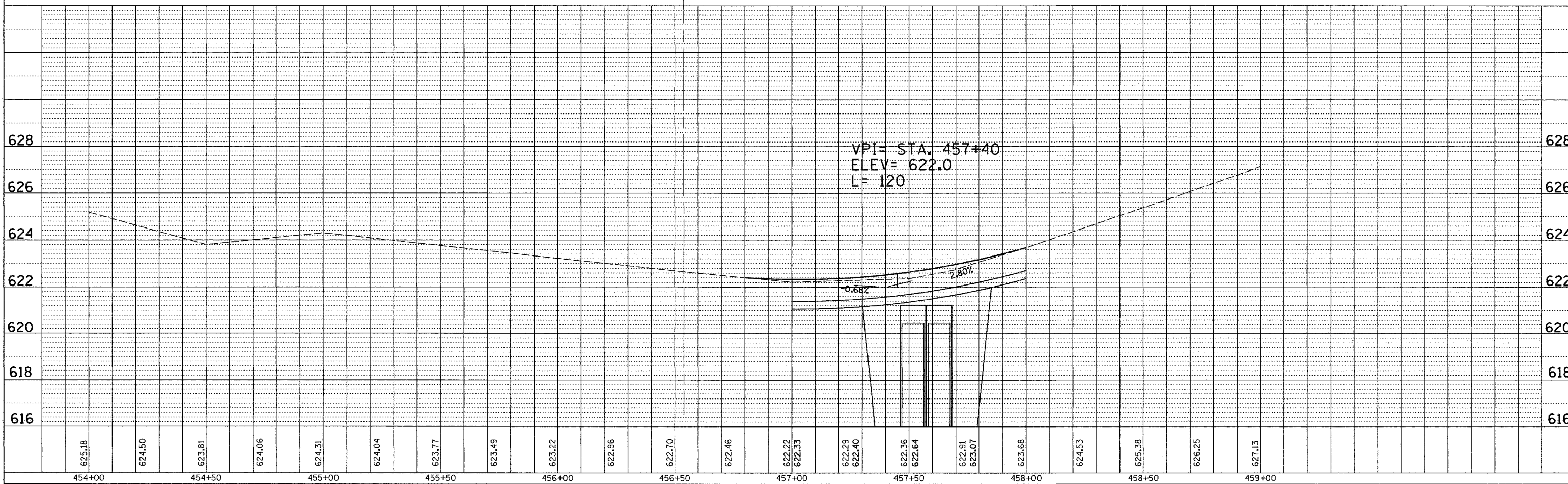
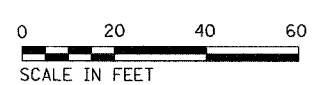
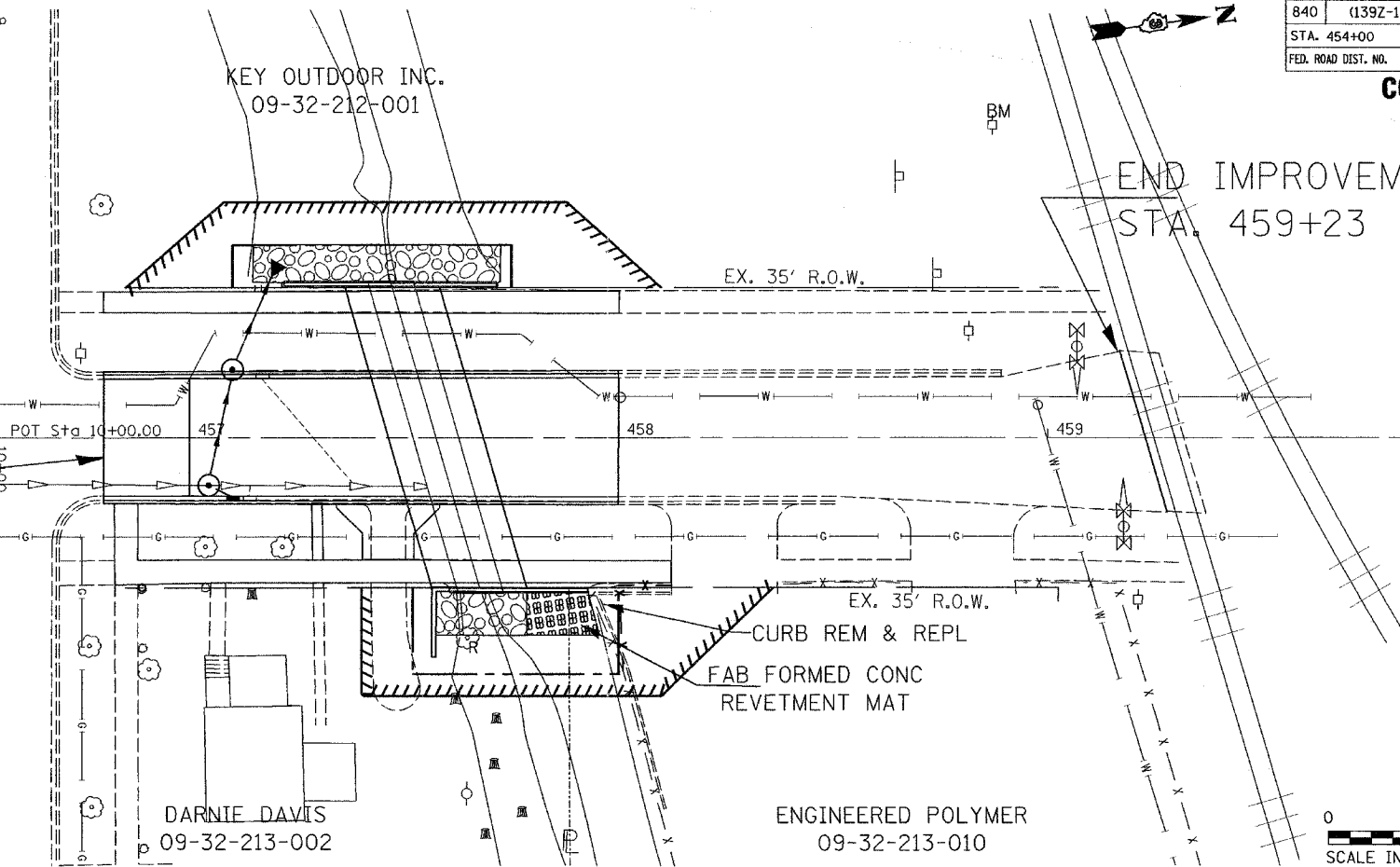
CONTRACT# 66131

MATCHLINE STA. 454 + 00

MATCHLINE STA. 460 + 00

END IMPROVEMENT
STA. 459+23

BEGIN IMPROVEMENT
STA. 456+80



PLAN	SURVEYED	PLOTTED	CHECKED	DATE

PROFILE	SURVEYED	PLOTTED	CHECKED	DATE

June 18, 2004
ep05999/sheets.dgn