

F.A. RTE.	SECTION	COUNTY	TOTAL SHEETS	SHEET NO.
	PARK ROADS 2016-02	JO DAVIESS	8	1
		ILLINOIS	CONTRACT NO. 46403	

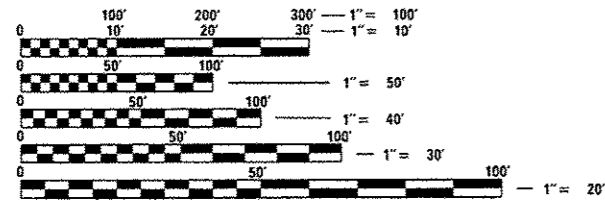
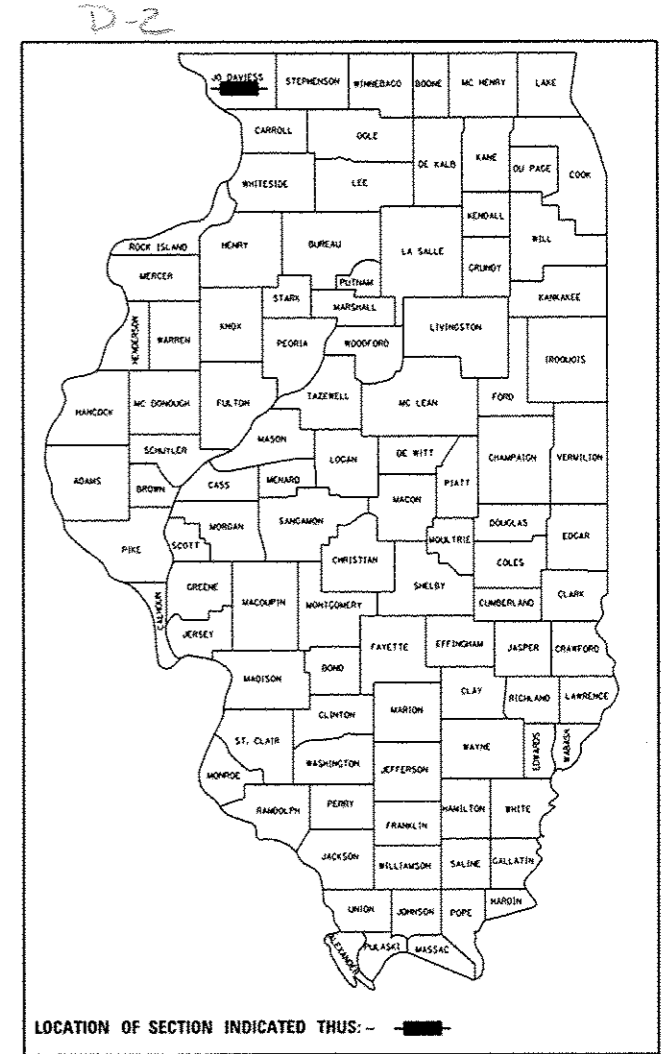
STATE OF ILLINOIS
DEPARTMENT OF TRANSPORTATION
DIVISION OF HIGHWAYS
I.D.O.T./I.H.P.A. STATEWIDE
APPLE RIVER FORT
STATE HISTORICAL SITE
SECTION PARK ROADS 2016-02
PARK ROAD IMPROVEMENTS
JO DAVIESS COUNTY
ROUTE: PARK ROADS
C-30-005-16

STATE STANDARDS

- 280001-07
- 542401-02
- 701006-05
- 701301-04
- 701901-05

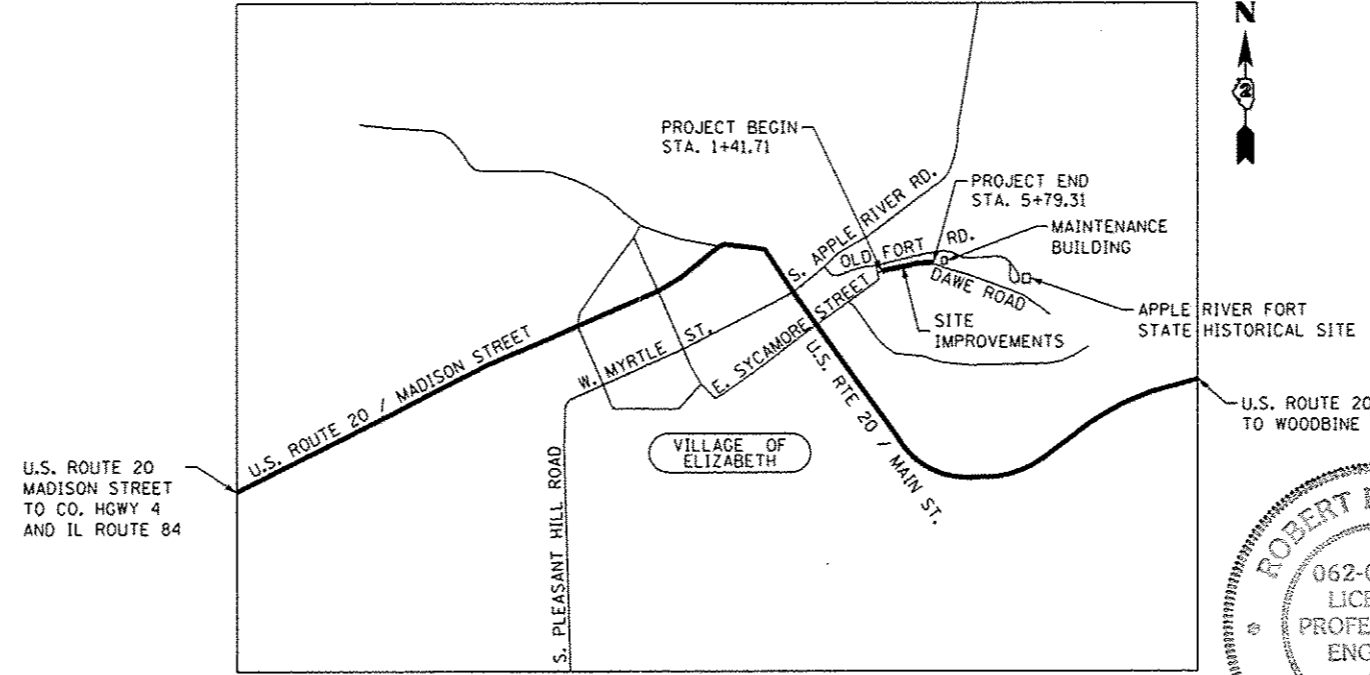
INDEX OF SHEETS

- 1 COVER SHEET
- 2 TYPICAL SECTIONS AND GENERAL NOTES
- 3 SUMMARY OF QUANTITIES
- 4 SCHEDULE OF QUANTITIES
- 5 EXISTING SITE AND DEMOLITION PLAN
- 6 PLAN / PROFILE - DAWE ROAD
- 7 CROSS SECTIONS (STA. 1+60 to 4+00)
- 8 CROSS SECTIONS (STA. 5+00 to 5+40)



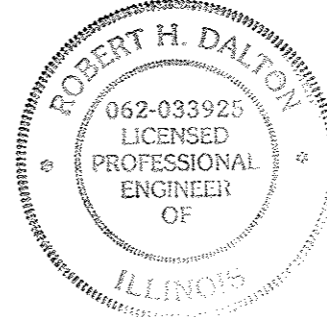
FULL SIZE PLANS HAVE BEEN PREPARED USING STANDARD ENGINEERING SCALES. REDUCED SIZED PLANS WILL NOT CONFORM TO STANDARD SCALES. IN MAKING MEASUREMENTS ON REDUCED PLANS, THE ABOVE SCALES MAY BE USED.

J.U.L.I.E.
 JOINT UTILITY LOCATION INFORMATION FOR EXCAVATION
 1-800-892-0123
 OR 811



PROJECT ENGINEER : VINCE MADONIA (217) 782-4074

GROSS LENGTH = 437.60 FT. = 0.083 MILE
 NET LENGTH = 437.60 FT. = 0.083 MILE



Robert H. Dalton 2/5/16
 ROBERT H. DALTON, P.E. DATE

STATE OF ILLINOIS
 DEPARTMENT OF TRANSPORTATION
 DIVISION OF HIGHWAYS

SUBMITTED *Feb 29 2016*

[Signature]
 DEPUTY DIRECTOR OF HIGHWAYS, REGION ENGINEER

March 18 2016
Mameon N. Addis, P.E.
 ENGINEER OF DESIGN AND ENVIRONMENT

March 18 2016
Omer Osman, P.E.
 DIRECTOR OF HIGHWAYS, CHIEF ENGINEER

**PRINTED BY THE AUTHORITY
 OF THE STATE OF ILLINOIS**

100% STATE

CONSTR. CODE

CODE NO.	ITEM	UNIT	TOTAL QUANTITY	ROADWAY
				0005 S.N.
28000500	INLET AND PIPE PROTECTION	EACH	1	1
35101400	AGGREGATE BASE COURSE, TYPE B	TON	62	62
40600275	BITUMINOUS MATERIALS (PRIME COAT)	POUND	1112	1112
40603000	HOT-MIX ASPHALT BINDER COURSE, IL-12.5, N50	TON	43	43
40603310	HOT-MIX ASPHALT SURFACE COURSE, MIX "C", N50	TON	42	42
48101500	AGGREGATE SHOULDERS, TYPE B 6"	SQ YD	181	181
54205053	PIPE CULVERTS, SPECIAL 18"	FOOT	20	20
54213453	END SECTIONS 18"	EACH	1	1
67100100	MOBILIZATION	LSUM	1	1
X2020410	EARTH EXCAVATION (SPECIAL)	CU YD	33	33
Z0013798	CONSTRUCTION LAYOUT	LSUM	1	1

* SPECIALTY ITEMS

PAVING SCHEDULE				
	AGG	HMA BC	HMA SC	AGG
	BASE	IL-12.5	MIX "C"	SHLDR
LOCATION	TYB	N50	N50	TYA, 6"
	TON	TON	TON	SQ YD
1+41.71 RT to 5+56.83 RT				91.4
1+41.93 LT to 5+42.92 LT				89.5
1+41.95 to 5+79.31	61.9	43.0	42.0	
TOTAL =	61.9	43.0	42.0	180.9

REMOVAL SCHEDULE				
	EARTH	EARTH		EARTHWORK
	EXCAVATION	EXCAVATION		BALANCE WASTE
LOCATION	(SPECIAL)	ADJUSTED FOR	EMBANKMENT	(+) OR SHORTAGE (-)
	CU YD	SHRINKAGE	CU YD	CU YD
1+41.95 to 5+79.31	18	6	21	-15
TOTAL =	18	6	21	-15

MISCELLANEOUS ITEMS					
	INLET	PIPE	END		CONSTRUCTION
	& PIPE	CULVERTS	SECTIONS		LAYOUT
LOCATION	PROTECTION	SPECIAL 18"	18"	MOBILIZATION	LSUM
	EACH	FOOT	EACH	LSUM	LSUM
ENTIRE SITE				1	1
4+20.70, 11.75' LT	1		1		
4+20.70, 11.75' LT to 4+22.32, 8.19' LT		20			
TOTAL =	1	20	1	1	1

PROPOSED CURVE C1
 P.I. STA. = 1+60.72
 P.I. COORDINATE
 N = 2058532.3105
 E = 2282522.7705
 $\Delta = 13^\circ 36' 06''$ (RT)
 D = 38° 11' 50"
 R = 150.00'
 T = 17.89'
 L = 35.61'
 E = 1.06'
 P.C. STA. = 1+42.83
 P.T. STA. = 1+78.44

CONTROL POINT #1
 IRON PIN WITH CAP
 N = 2058566.2000
 E = 2282974.5900
 ELEV. = 795.16

CONTROL POINT #2
 MAG NAIL
 N = 2058591.3100
 E = 2282918.3300
 ELEV. = 788.24

CONTROL POINT #3
 MAG NAIL
 N = 2058523.8400
 E = 2282478.1400
 ELEV. = 793.07

CONTROL POINT #4
 SPIKE NAIL
 N = 2058573.8400
 E = 2282853.0300
 ELEV. = 783.45

STATION 1+00
 N = 2058507.8029
 E = 2282467.2134

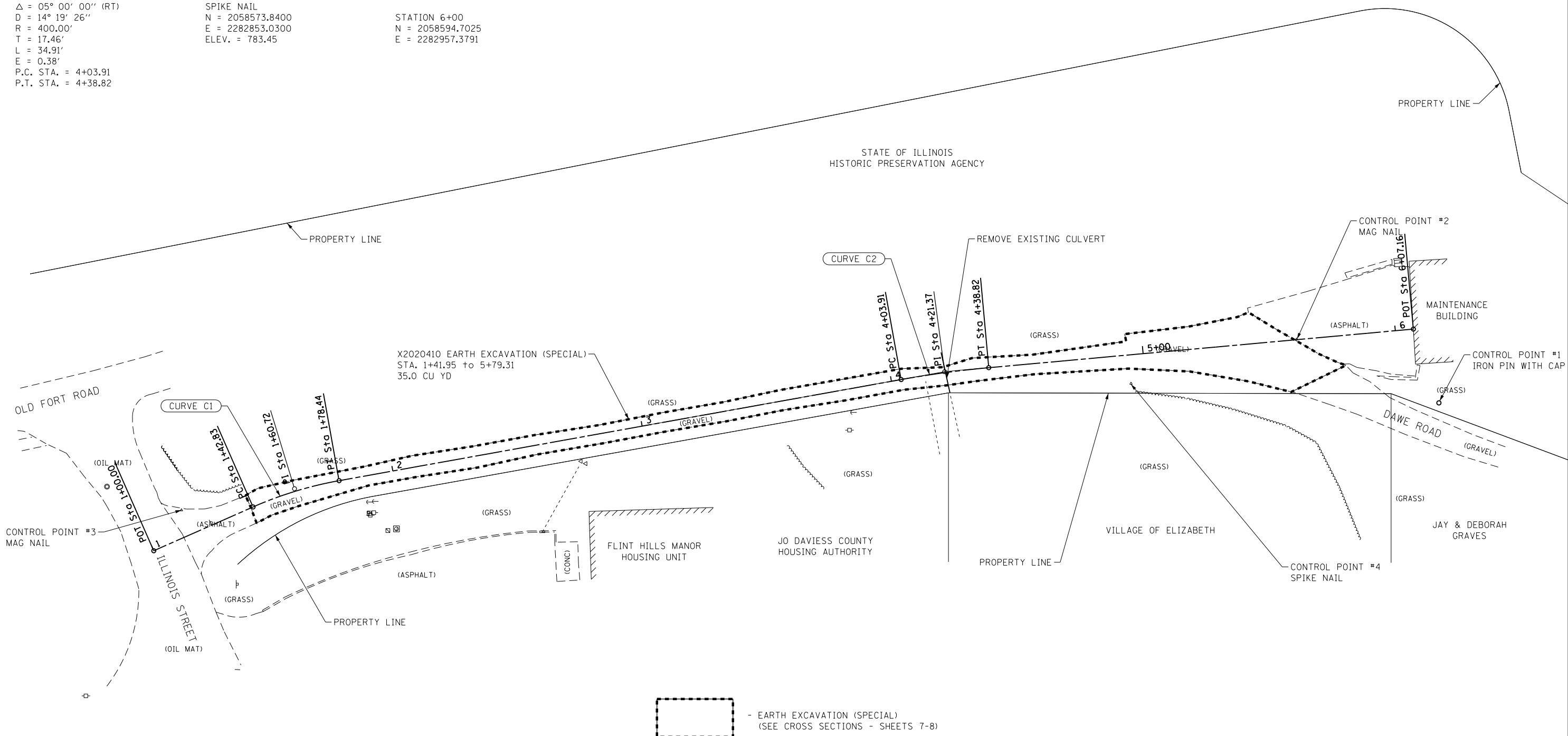
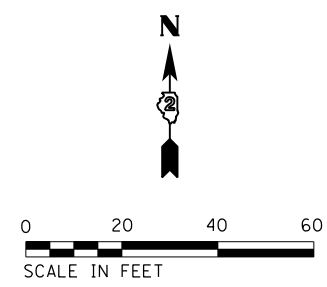
STATION 2+00
 N = 2058539.2969
 E = 2282561.5926

STATION 3+00
 N = 2058557.0085
 E = 2282660.0116

STATION 4+00
 N = 2058574.7200
 E = 2282758.4306

STATION 5+00
 N = 2058585.6362
 E = 2282857.7910

STATION 6+00
 N = 2058594.7025
 E = 2282957.3791



FILE NAME = C-DEMO.dgn	USER NAME = SteveK	DESIGNED - R.H.D./D.R.C.	REVISED - S.D.K. 2/5/16
Default	PLOT SCALE = 40.0000' / in.	DRAWN - D.R.C.	REVISED -
	PLOT DATE = 2/5/2016	CHECKED - R.H.D.	REVISED -
		DATE - DEC. 23, 2015	REVISED -

**STATE OF ILLINOIS
 DEPARTMENT OF TRANSPORTATION**

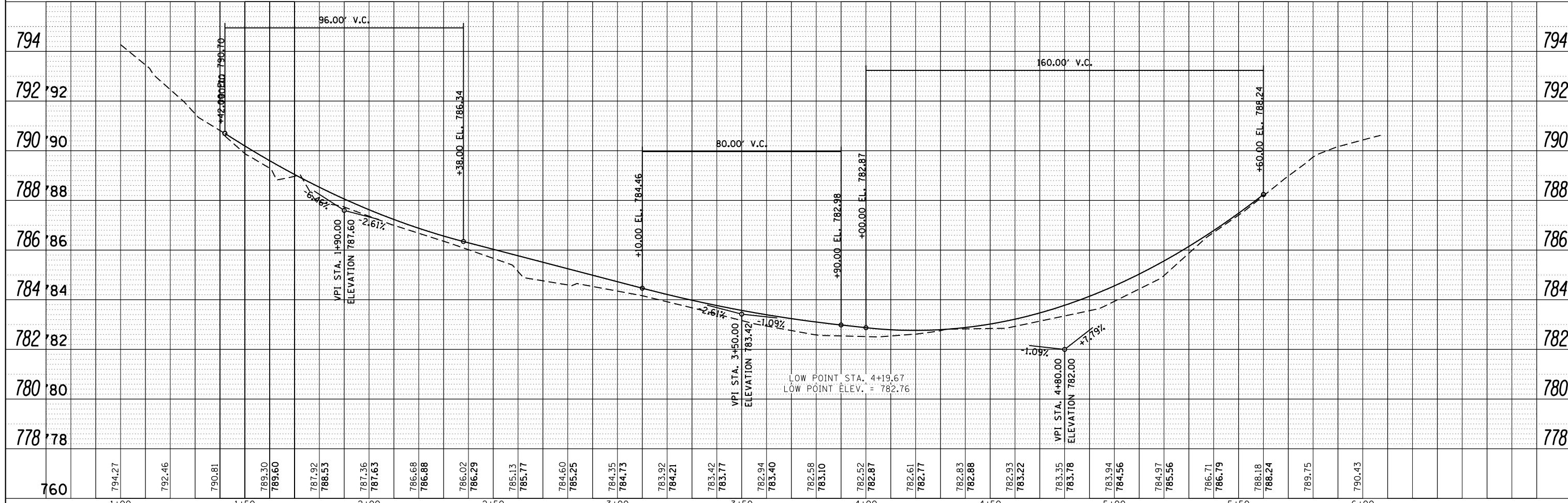
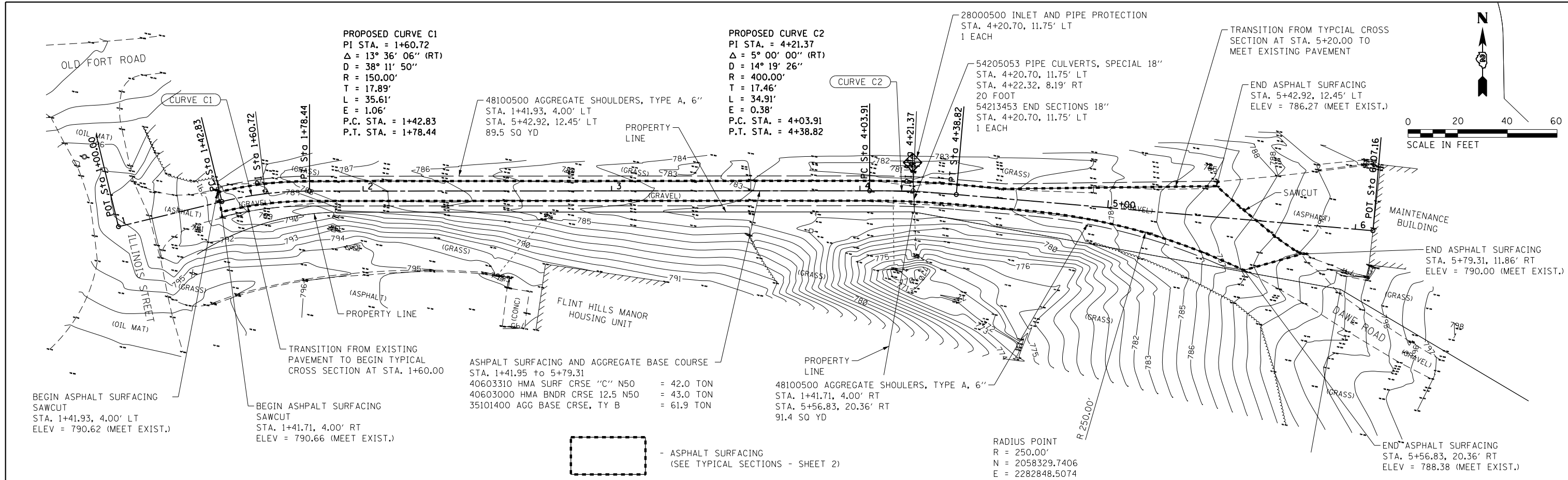
**EXISTING SITE AND DEMOLITION PLAN
 APPLE RIVER FORT STATE HISTORICAL SITE**

SCALE: 1" = 20' SHEET 5 OF 8 SHEETS STA. 1+00.00 TO STA. 6+07.16

F.A. RTE.	SECTION	COUNTY	TOTAL SHEETS	SHEET NO.
	PARK ROADS 2016-02	JO DAVIESS	8	5
CONTRACT NO. 46403			ILLINOIS FED. AID PROJECT	

PLAN	SURVEYED	BY	DATE
	NOTED		
	ALIGNED		
	CHECKED		
	FILED		
	NO.		

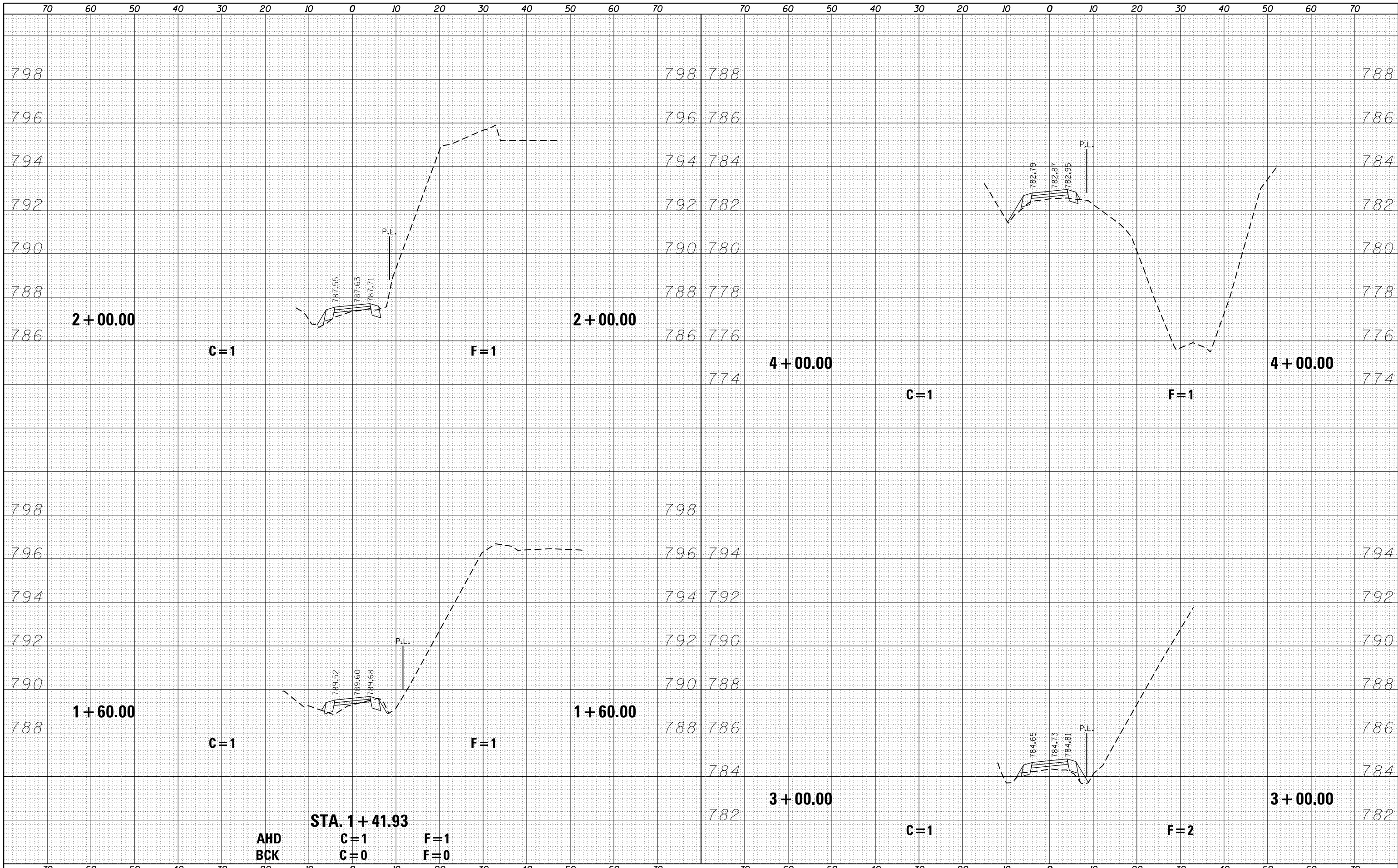
PROFILE	SURVEYED	BY	DATE
	NOTED		
	GRADES		
	CHECKED		
	STRUCTURE		
	NOTATIONS		
	CHFD		
	NO.		



FILE NAME = C-PLAN_PROF.dgn	USER NAME = SteveK	DESIGNED - R.H.D./D.R.C.	REVISED - S.D.K. 2/5/16	STATE OF ILLINOIS DEPARTMENT OF TRANSPORTATION	PLAN /PROFILE - DAWE ROAD APPLE RIVER FORT STATE HISTORIC SITE	F.A. RTÉ.	SECTION	COUNTY	TOTAL SHEETS	SHEET NO.
Default	PLOT SCALE = 40.0000' / in.	CHECKED - R.H.D.	REVISED -			PARK ROADS 2016-02	JO DAVIESS	8	6	
	PLOT DATE = 2/5/2016	DATE - DEC. 23, 2015	REVISED -			CONTRACT NO. 46403				
SCALE: 1" = 20'						SHEET 6 OF 8 SHEETS		STA. 1+00.00 TO STA. 6+07.16		ILLINOIS FED. AID PROJECT

DATE	
BY	
FINAL SURVEY	
PLOTTED	
TEMPLATE	
NOTE BOOK	
AREAS CHECKED	
NO.	

DATE	
BY	
ORIGINAL SURVEY	
PLOTTED	
TEMPLATE	
NOTE BOOK	
AREAS CHECKED	
NO.	



FILE NAME = C-XSCTNS.dgn
Default

USER NAME = SteveK	DESIGNED - R.H.D./D.R.C.	REVISED - S.D.K. 2/5/16
	DRAWN - D.R.C.	REVISED -
PLOT SCALE = 20.0000' / in.	CHECKED - R.H.D.	REVISED -
PLOT DATE = 2/5/2016	DATE - DEC. 23, 2015	REVISED -

**STATE OF ILLINOIS
DEPARTMENT OF TRANSPORTATION**

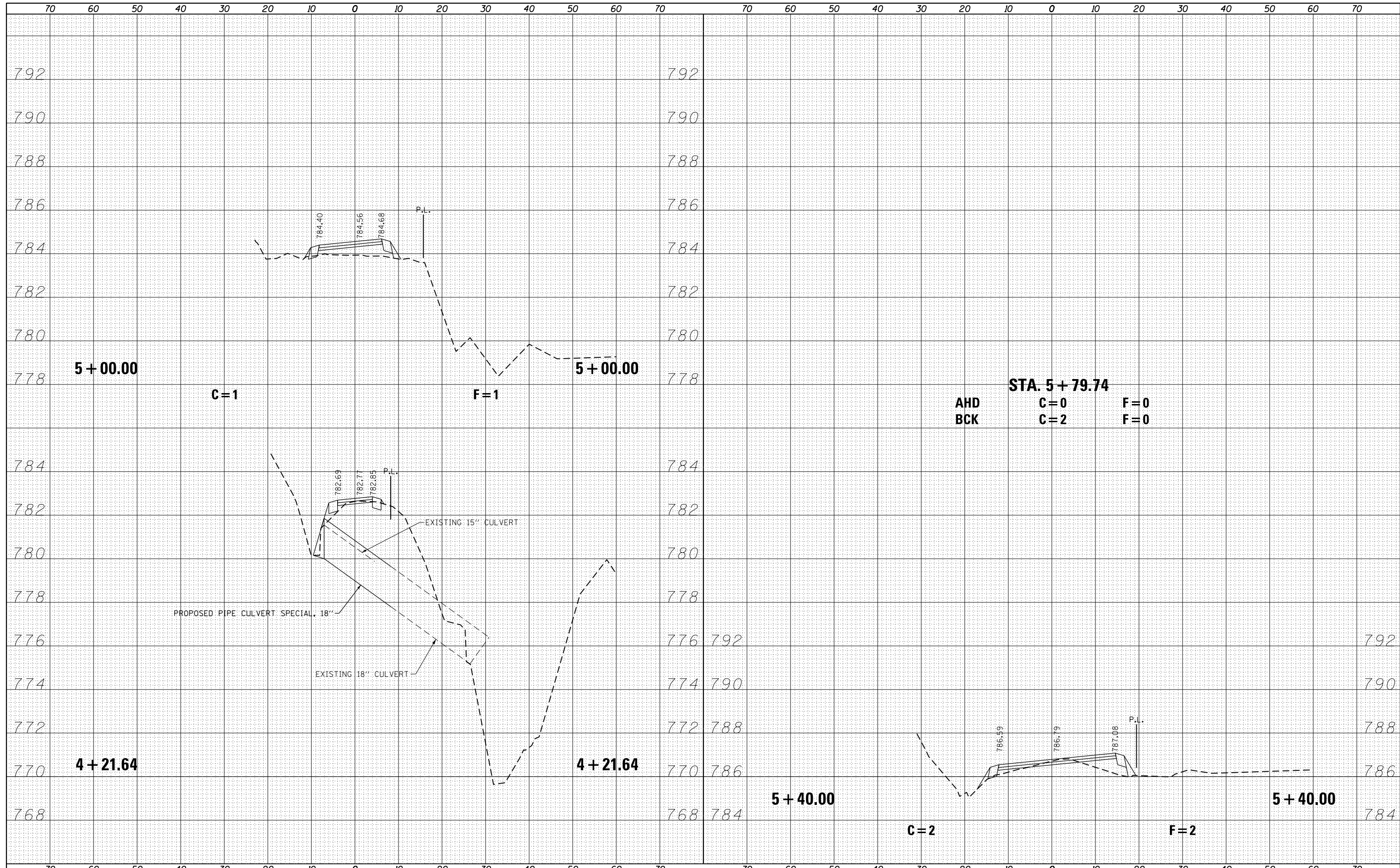
**CROSS SECTIONS
APPLE RIVER FORT STATE HISTORICAL SITE**

SCALE: 1" = 10' SHEET 7 OF 8 SHEETS STA. 1+60.00 TO STA. 4+00.00

F.A. RTE.	SECTION	COUNTY	TOTAL SHEETS	SHEET NO.
	PARK ROADS 2016-02	JO DAVIESS	8	7
			CONTRACT NO. 46403	
ILLINOIS FED. AID PROJECT				

DATE	
BY	
FINAL SURVEY	
SURVEYED	
PLOTTED	
TEMPLATE	
NOTE BOOK	
AREAS CHECKED	
NO.	

DATE	
BY	
ORIGINAL SURVEY	
SURVEYED	
PLOTTED	
TEMPLATE	
NOTE BOOK	
AREAS CHECKED	
NO.	



FILE NAME = C-XSCTNS.dgn
 Default

USER NAME = SteveK	DESIGNED - R.H.D./D.R.C.	REVISED - S.D.K. 2/5/16
	DRAWN - D.R.C.	REVISED -
PLOT SCALE = 20.0000' / in.	CHECKED - R.H.D.	REVISED -
PLOT DATE = 2/5/2016	DATE - DEC. 23, 2015	REVISED -

**STATE OF ILLINOIS
 DEPARTMENT OF TRANSPORTATION**

**CROSS SECTIONS
 APPLE RIVER FORT STATE HISTORICAL SITE**

SCALE: 1" = 10' SHEET 8 OF 8 SHEETS STA. 5+00.00 TO STA. 5+40.00

F.A. RTE.	SECTION	COUNTY	TOTAL SHEETS	SHEET NO.
	PARK ROADS 2016-02	JO DAVIESS	8	8
			CONTRACT NO. 46403	
ILLINOIS FED. AID PROJECT				