

STATE OF ILLINOIS
DEPARTMENT OF TRANSPORTATION
DIVISION OF HIGHWAYS

F.A.P. RTE.	SECTION	COUNTY	TOTAL SHEETS	SHEET NO.
305	2015-009I	McHENRY	19	1
ILLINOIS CONTRACT NO. 62A63				

D-91-276-15

FOR INDEX OF SHEETS, SEE SHEET NO. 2

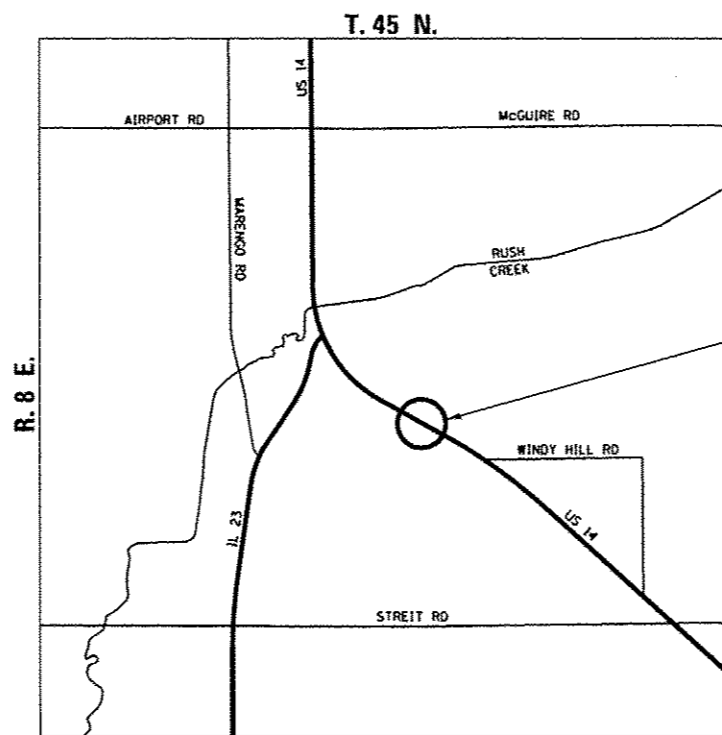
PROJECT LOCATED IN UNINCORPORATED McHENRY COUNTY
JUST SOUTH OF THE CITY OF HARVARD

**PROPOSED
HIGHWAY PLANS**

FAP ROUTE 305 (US 14) OVER DITCH (0.4 MILES EAST OF IL 23)
SECTION 2015-009I
CULVERT REMOVAL
McHENRY COUNTY
C-91-276-15

TRAFFIC DATA

POSTED SPEED: 45 MPH
DESIGN SPEED: 50 MPH
FUNCTIONAL CLASSIFICATION:
OTHER PRINCIPAL ARTERIAL
ADT = 6,150 (2013)



PROJECT LOCATION
STRUCTURE NO. 056-0267

JAMIL BOU-SAAB
062-047537
REGISTERED
PROFESSIONAL
ENGINEER
OF
ILLINOIS

Jamil Bou-Saab

JAMIL BOU-SAAB
LICENSED PROFESSIONAL ENGINEER
ILLINOIS NO. 062-047537 EXPIRES 11-30-17

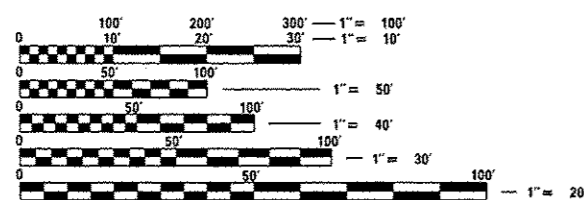
STATE OF ILLINOIS
DEPARTMENT OF TRANSPORTATION
DIVISION OF HIGHWAYS

SUBMITTED *January 26, 2016*

John Fortman
DEPUTY DIRECTOR OF HIGHWAYS, REGION ENGINEER

Muhammad Adz P.E.
ENGINEER OF DESIGN AND ENVIRONMENT

Imad Osman P.E.
DIRECTOR OF HIGHWAYS, CHIEF ENGINEER



FULL SIZE PLANS HAVE BEEN PREPARED USING STANDARD ENGINEERING SCALES. REDUCED SIZED PLANS WILL NOT CONFORM TO STANDARD SCALES. IN MAKING MEASUREMENTS ON REDUCED PLANS, THE ABOVE SCALES MAY BE USED.

J.U.L.I.E.
JOINT UTILITY LOCATION INFORMATION FOR EXCAVATION
1-800-892-0123
OR 811

PROJECT MANAGER: ISSAM RAYYAN, P.E. (847) 705-4178
PROJECT ENGINEER: JEAN A. MIDY, P.E. (847) 221-3056

CONTRACT NO. 62A63



PRINTED BY THE AUTHORITY
OF THE STATE OF ILLINOIS

1/14/2016 11:41:31 AM C:\Users\jrayyan\Documents\2015-009I\2015-009I-001.dgn

P:\AL 31 and US 14 Culvert Removals 07-154-005\Design\Civil\CA00 Sheets\01L30514-ht-5001.rvt.dgn
 500 1

SP	SI	CODE NO.	ITEM	UNIT	TOTAL QUANTITY	100% STATE
						ROADWAY 0005 SN 056-0267
		20100110	TREE REMOVAL (6 TO 15 UNITS DIAMETER)	UNIT	8	8
		20100210	TREE REMOVAL (OVER 15 UNITS DIAMETER)	UNIT	16	16
		20200100	EARTH EXCAVATION	CU YD	700	700
		20201200	REMOVAL AND DISPOSAL OF UNSUITABLE MATERIAL	CU YD	25	25
		20400800	FURNISHED EXCAVATION	CU YD	35	35
		21101505	TOPSOIL EXCAVATION AND PLACEMENT	CU YD	140	140
		21101625	TOPSOIL FURNISH AND PLACE, 6"	SO YD	1060	1060
		21400100	GRADING AND SHAPING DITCHES	FOOT	800	800
		25100125	MULCH, METHOD 3	ACRE	0.22	0.22
		25100630	EROSION CONTROL BLANKET	SO YD	1060	1060
		28000250	TEMPORARY EROSION CONTROL SEEDING	POUND	25	25
		28000305	TEMPORARY DITCH CHECKS	FOOT	24	24
		28000400	PERIMETER EROSION BARRIER	FOOT	815	815
		28100103	STONE RIPRAP, CLASS A2	SO YD	6	6

14

X SPECIALTY ITEM
 * SPECIAL PROVISION ITEM



USER NAME * JuanS	DESIGNED - DPA	REVISED -
PLOT SCALE * NTS	DRAWN - JPS	REVISED -
PLOT DATE * 1/21/2016	CHECKED - TWS	REVISED -
	DATE - 11/30/15	REVISED -

STATE OF ILLINOIS
DEPARTMENT OF TRANSPORTATION

US 14 OVER DITCH CULVERT REMOVAL	
SUMMARY OF QUANTITIES	
SCALE: NTS	SHEET 1 OF 3 SHEETS STA. TO STA.

F.A.P. RTE.	SECTION	COUNTY	TOTAL SHEETS	SHEET NO.
305	2015-0091	McHENRY	19	3
CONTRACT NO. 62A63				
ILLINOIS FED. AID PROJECT				

SP	SI	CODE NO.	ITEM	UNIT	TOTAL QUANTITY	100% STATE
						ROADWAY
						0005
						SN 056-0267
*		30300112	AGGREGATE SUBGRADE IMPROVEMENT 12"	SO YD	188	188
		31101900	SUBBASE GRANULAR MATERIAL, TYPE C	TON	6	6
*		40600275	BITUMINOUS MATERIALS (PRIME COAT)	POUND	34	34
		40600290	BITUMINOUS MATERIALS (TACK COAT)	POUND	34	34
		40701921	HOT-MIX ASPHALT PAVEMENT (FULL-DEPTH), 12"	SO YD	148	148
		44000100	PAVEMENT REMOVAL	SO YD	181	181
		44213200	SAW CUTS	FOOT	64	64
		48101500	AGGREGATE SHOULDERS, TYPE B 6"	SO YD	212	212
		48203029	HOT-MIX ASPHALT SHOULDERS, 8"	SO YD	34	34
		50100100	REMOVAL OF EXISTING STRUCTURES	EACH	1	1
		54213669	PRECAST REINFORCED CONCRETE FLARED END SECTIONS 24"	EACH	2	2
		542A1069	PIPE CULVERTS, CLASS A, TYPE 2 24"	FOOT	90	90
		63200310	GUARDRAIL REMOVAL	FOOT	375	375
		64200116	SHOULDER RUMBLE STRIPS, 16 INCH	FOOT	102	102

X SPECIALTY ITEM
 • SPECIAL PROVISION ITEM

I:\MAIL 31 and US 14 Culvert Removals\12-184-005\Design\Civil\121614\14-500-14.dgn
 S00 2



USER NAME - DavidL	DESIGNED - OPA	REVISED -
PLOT SCALE - NTS	DRAWN - JPS	REVISED -
PLOT DATE - 1/29/2016	CHECKED - TWB	REVISED -
	DATE - 01/29/16	REVISED -

STATE OF ILLINOIS
 DEPARTMENT OF TRANSPORTATION

US 14 OVER DITCH CULVERT REMOVAL
 SUMMARY OF QUANTITIES

SCALE: NTS SHEET 2 OF 3 SHEETS STA. TO STA.

F.A.P. RTE.	SECTION	COUNTY	TOTAL SHEETS	SHEET NO.
305	2015-0091	McHENRY	19	4
CONTRACT NO. 62A63			ILLINOIS FED. AID PROJECT	

SP	SI	CODE NO.	ITEM	UNIT	TOTAL QUANTITY	100% STATE
						ROADWAY 0005 SN 056-0267
		67100100	MOBILIZATION	L SUM	1	1
		70106800	CHANGEABLE MESSAGE SIGN	CAL MO	2	2
	*	72400500	RELOCATE SIGN PANEL ASSEMBLY - TYPE A	EACH	1	1
	*	72400710	RELOCATE SIGN PANEL - TYPE 1	SO FT	9	9
	* *	78000200	THERMOPLASTIC PAVEMENT MARKING - LINE 4"	FOOT	204	204
	* *	78100100	RAISED REFLECTIVE PAVEMENT MARKER	EACH	2	2
	* *	85000200	MAINTENANCE OF EXISTING TRAFFIC SIGNAL INSTALLATION	EACH	1	1
	*	X2020110	GRADING AND SHAPING SHOULDERS	UNIT	4	4
	*	X2501700	SEEDING, CLASS 3 (MODIFIED)	ACRE	0.22	0.22
	*	X7010216	TRAFFIC CONTROL AND PROTECTION, (SPECIAL)	L SUM	1	1
	*	Z0013798	CONSTRUCTION LAYOUT	L SUM	1	1
	*	Z0023602	GRANULAR CULVERT BACKFILL	CU YD	365	365
		Z0058668	GRADING AND SHAPING FORESLOPES	SQ YD	1060	1060
		Z0073510	TEMPORARY TRAFFIC SIGNAL TIMING	EACH	1	1

X SPECIALTY ITEM
 * SPECIAL PROVISION ITEM

P:\U_31 and US 14 Culvert Removals\02-154-005\Design\Civil\0400 Sheets\01\01\2014-01-502.M.dgn
 500 3

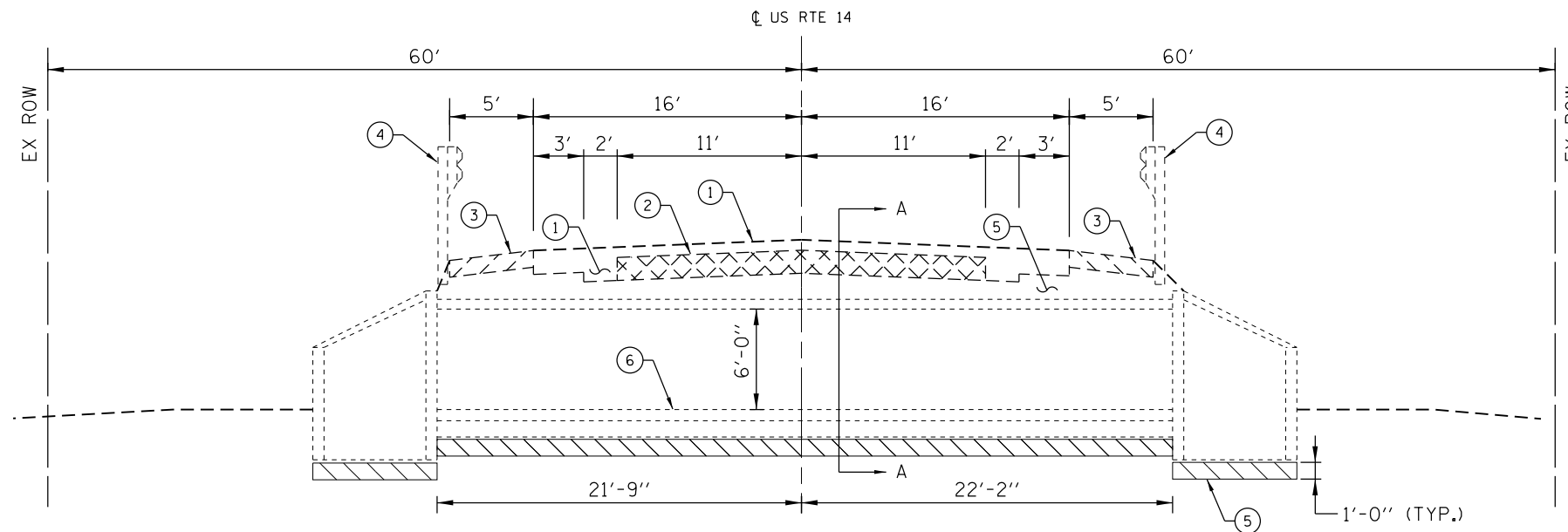


USER NAME : JueoS	DESIGNED - DPA	REVISED -
PLOT SCALE : NTS	DRAWN - JPS	REVISED -
PLOT DATE : 1/21/2016	CHECKED - TWB	REVISED -
	DATE - 11/30/15	REVISED -

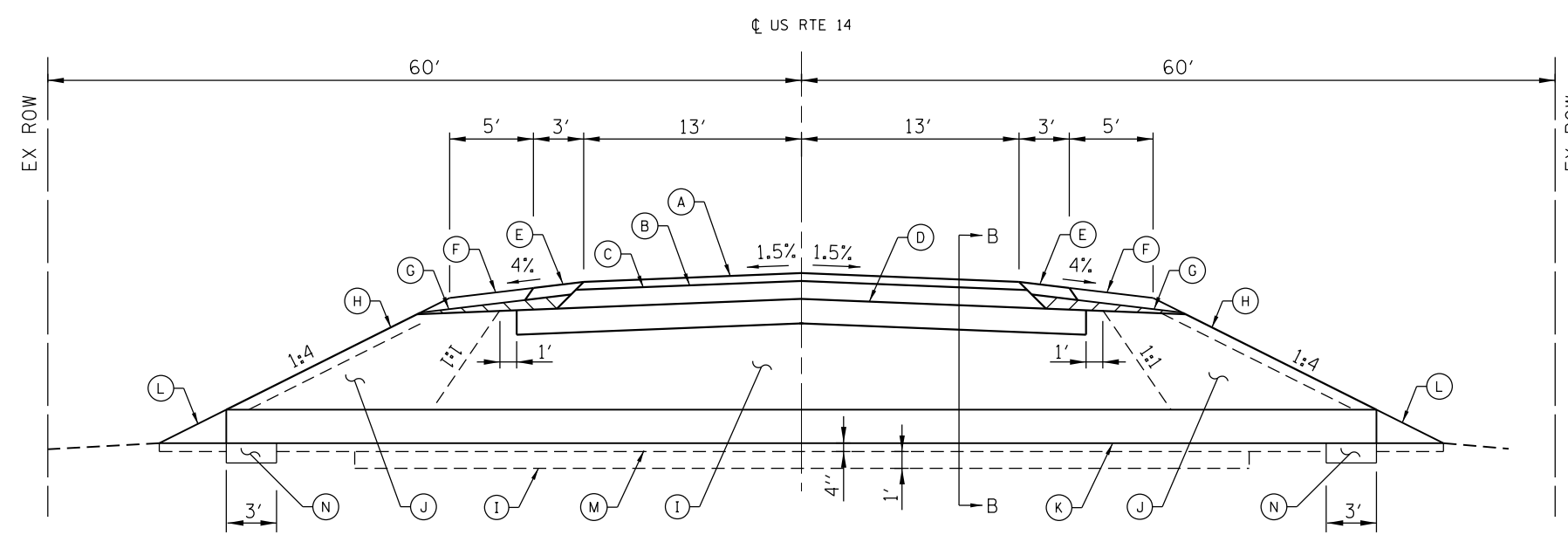
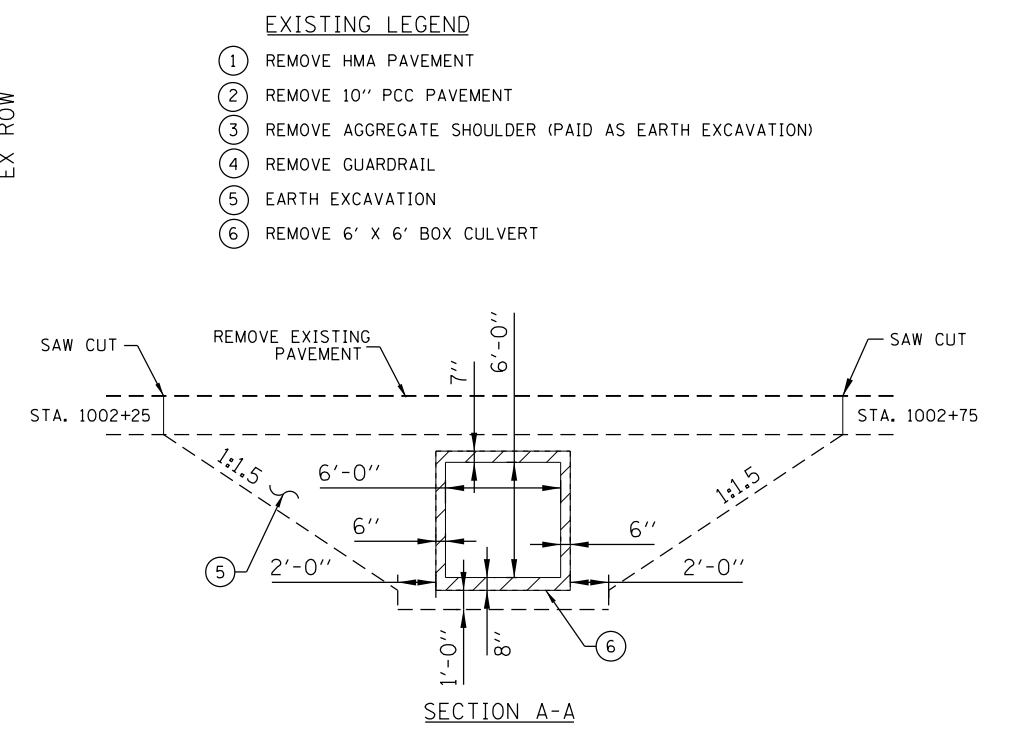
STATE OF ILLINOIS
 DEPARTMENT OF TRANSPORTATION

US 14 OVER DITCH CULVERT REMOVAL	
SUMMARY OF QUANTITIES	
SCALE: NTS	SHEET 3 OF 3 SHEETS STA. TO STA.

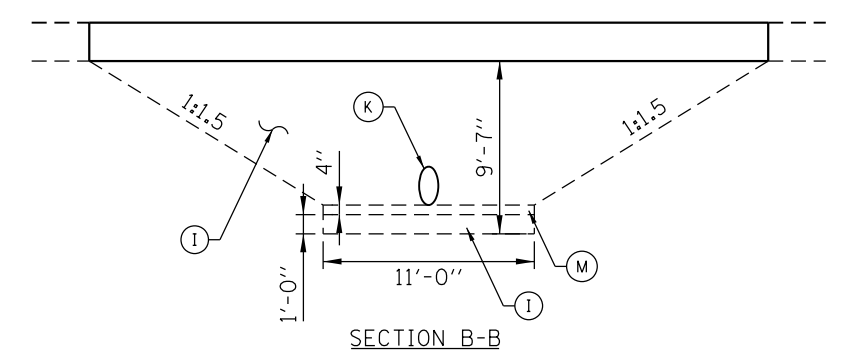
F.A.P. RTE.	SECTION	COUNTY	TOTAL SHEETS	SHEET NO.
305	2015-0091	McHENRY	19	5
CONTRACT NO. 62A63				
ILLINOIS FED. AID PROJECT				



EXISTING ROADWAY TYPICAL SECTION
AT EXISTING REINFORCED CONCRETE BOX CULVERT



PROPOSED ROADWAY TYPICAL SECTION
WITH PROPOSED 24" PIPE CULVERT



- PROPOSED LEGEND**
- Ⓐ HMA SURFACE COURSE, "MIX D", N50 (2")
 - Ⓑ BITUMINOUS MATERIALS (PRIME COAT)
 - Ⓒ HMA BINDER COURSE, IL-19.0, N50 (10")
 - Ⓓ AGGREGATE SUBGRADE IMPROVEMENT, 12"
 - Ⓔ HMA SHOULDERS, 8"
 - Ⓕ AGGREGATE SHOULDERS, TYPE B 6"
 - Ⓖ SUBBASE GRANULAR MATERIAL, TYPE C
 - Ⓗ TOPSOIL, 6"
 - Ⓘ GRANULAR CULVERT BACKFILL
 - Ⓝ EMBANKMENT OR FURNISHED EXCAVATION
 - Ⓚ PIPE CULVERT, CLASS A, TYPE 2, 24"
 - Ⓛ PRECAST REINFORCED CONCRETE FLARED END SECTIONS, 24"
 - Ⓜ AGGREGATE BEDDING FOR PIPE CULVERT, 4" (INCLUDED IN COST OF PIPE CULVERT)
 - Ⓝ WELL COMPACTED IMPERVIOUS MATERIAL (INCLUDED IN COST OF PIPE CULVERT)

HOT-MIX ASPHALT REQUIREMENTS

APPLICATION	MIXTURE TYPE	AIR VOIDS @ NDES	QUALITY MANAGEMENT PROGRAM (QMP)
US 14 TRAVEL LANES HMA FULL DEPTH PAVEMENT, 12"	2" HMA SURFACE COURSE, "MIX D", N50, IL-9.5	4% @ 50 GYR	QC/OA
	10" HMA BINDER COURSE IL-19.0, N50	4% @ 50 GYR	QC/OA
HMA SHOULDERS, 8 INCH	6" HMA BINDER IL-19.0	4% @ 50 GYR	QC/OA
	2" HMA SURFACE COURSE, "MIX D", N50, IL-9.5	4% @ 50 GYR	QC/OA

QMP DESIGNATIONS: QUALITY CONTROL/QUALITY ASSURANCE (QC/OA); QUALITY CONTROL FOR PERFORMANCE (QCP); PAY FOR PERFORMANCE (PFP)

NOTES:

1. THE UNIT WEIGHT USED TO CALCULATE ALL HMA MIXTURE QUANTITIES IS 112 LBS/SOYD/IN.
2. FOR NON-POLYMERIZED HMA THE "AC TYPE" SHALL BE "PG 64 -22" UNLESS MODIFIED BY DISTRICT ONE SPECIAL PROVISIONS.
3. FOR USE OF RECYCLED MATERIALS SEE DISTRICT ONE SPECIAL PROVISIONS.
4. QUALITY MANAGEMENT PROGRAM (QMP) IDENTIFIES THE PARTICULAR QUALITY CONTROL SPECIFICATION THAT APPLIES TO THE HMA MIXTURE.

M:\11_31 and US 14 Culvert Removals\112-154-005\Design\Civil\CADD Sheets\11213US14-shr-typical_14-1.dgn



USER NAME = DavidL	DESIGNED - DPA	REVISED - _____
PLOT SCALE = NTS	DRAWN - JPS	REVISED - _____
PLOT DATE = 1/29/2016	CHECKED - TWB	REVISED - _____
	DATE - 01/29/16	REVISED - _____

**STATE OF ILLINOIS
DEPARTMENT OF TRANSPORTATION**

US 14 OVER DITCH CULVERT REMOVAL TYPICAL SECTIONS	
SCALE: NTS	SHEET 1 OF 1 SHEETS
STA. _____	TO STA. _____

F.A.P. RTE.	SECTION	COUNTY	TOTAL SHEETS	SHEET NO.
305	2015-009I	McHENRY	19	6
CONTRACT NO. 62A63				
ILLINOIS FED. AID PROJECT				

US 14 EARTHWORK SCHEDULE

A	B	C	D	E	F	G	H	I	J
FROM STA	TO STA	EARTH EXCAVATION (CU YD)	AGGREGATE SHOULDER REMOVAL (CU YD)	STRUCTURE EXCAVATION (CU YD)	UNSUITABLE MATERIAL (CU YD)	15% ADJUSTMENT FOR SHRINKAGE (CU YD)	FILL EMBANKMENT (CU YD)	EARTHWORK BALANCE WASTE (+) SHORTAGE (-) (CU YD)	GRANULAR CULVERT BACKFILL (CU YD)
1002+00.00	1002+30.00	1.28	5.56		0.13	0.98	7.44	-6.47	
1002+30.00	1002+44.50	105.64	2.69	124.11	10.56	80.81	39.34	41.47	108.64
1002+44.50	1002+46.50	14.52	0.37	32.25	1.45	11.11	10.15	0.96	28.79
1002+46.50	1002+50.00	0.13	0.65	49.58	0.01	0.10	22.92	-22.82	39.34
1002+50.00	1002+53.50	0.13	0.65	50.58	0.01	0.10	23.75	-23.65	40.65
1002+53.50	1002+55.50	15.19	0.37	33.52	1.52	11.62	11.43	0.19	30.54
1002+55.50	1002+70.00	110.33	2.69	129.18	11.03	84.41	57.33	27.08	115.87
1002+70.00	1003+00.00	4.39	5.56		0.44	3.36	47.17	-43.81	
1003+00.00	1003+25.00	4.44	4.63		0.44	3.40	12.18	-8.78	
GRAND TOTAL		255	25	420	25	195	230	-35	365

LEGEND

COLUMNS A AND B: LOCATION ON PLANS

COLUMN C: CUT QUANTITIES FROM CROSS SECTIONS

COLUMN D: AGGREGATE SHOULDER REMOVAL QUANTITIES FROM CROSS SECTIONS; TO BE PAID AS "EARTH EXCAVATION"

COLUMN E: STRUCTURE EXCAVATION QUANTITIES FROM CROSS SECTIONS; TO BE PAID AS "EARTH EXCAVATION"

COLUMN F: = C X 0.1

CUT MATERIAL THAT IS DETERMINED TO BE EITHER UNSTABLE OR UNSUITABLE FOR USE IN EMBANKMENT. ASSUME 10% OF EARTH EXCAVATION.

COLUMN G: = (C - F) X 0.85

EARTH EXCAVATION THAT IS TO BE USED AS FILL MATERIAL IN THE EMBANKMENT. A SHRINKAGE FACTOR OF 15% IS USED.

COLUMN H: FILL QUANTITIES FROM CROSS SECTIONS

COLUMN I: = G - H

POSITIVE QUANTITY = EXTRA EXCAVATION. NEGATIVE QUANTITY = FURNISHED EXCAVATION NEEDED.

COLUMN J: GRANULAR CULVERT BACKFILL QUANTITIES FROM CROSS SECTIONS

M:\11_31 and US 14 Culvert Removals (12-154-005)\Design\Civil\CADD Sheets\11.31US14-shr-schedule.14.dgn



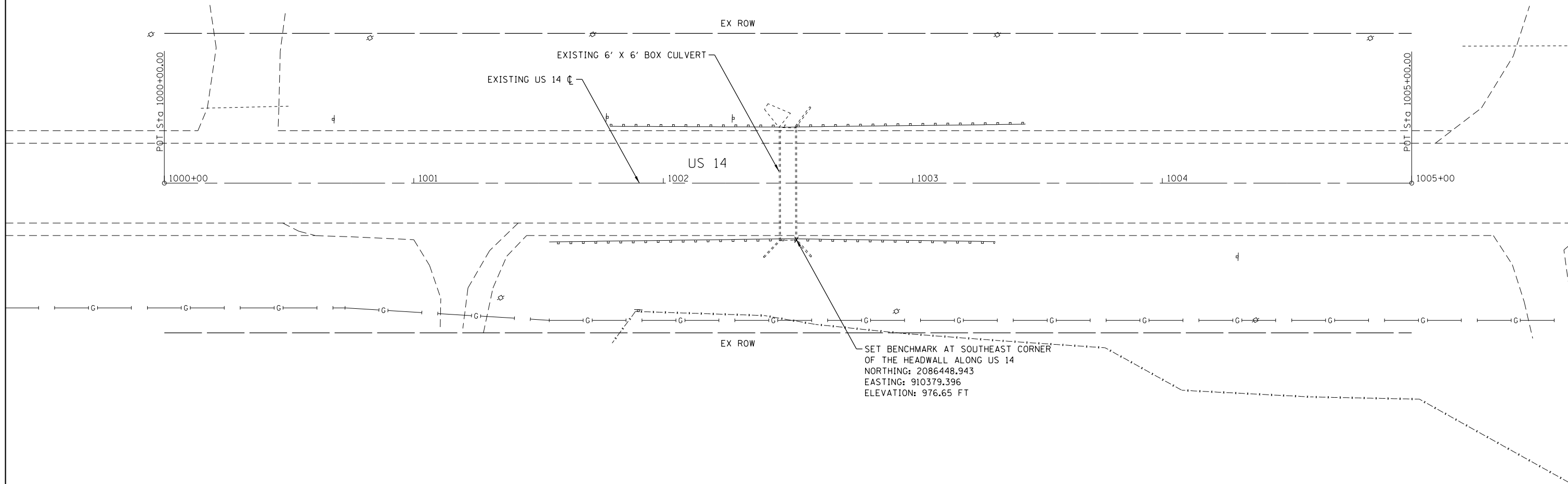
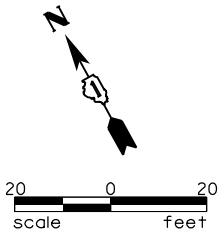
USER NAME = JuanS	DESIGNED - DPA	REVISED -
	DRAWN - JPS	REVISED -
PLOT SCALE = NTS	CHECKED - TWB	REVISED -
PLOT DATE = 1/21/2016	DATE - 11/30/15	REVISED -

**STATE OF ILLINOIS
DEPARTMENT OF TRANSPORTATION**

**US 14 OVER DITCH CULVERT REMOVAL
SCHEDULE OF QUANTITIES**

SCALE: NTS SHEET 1 OF 1 SHEETS STA. TO STA.

F.A.P. RTE.	SECTION	COUNTY	TOTAL SHEETS	SHEET NO.
305	2015-009I	McHENRY	19	7
ILLINOIS FED. AID PROJECT			CONTRACT NO. 62A63	



US 14 ALIGNMENT DATA

DESCRIPTION	NORTHING	EASTING	STATION
POINT OF TANGENT	2086591.6603	910168.8355	1000+00.00
POINT OF TANGENT	2086349.4971	910606.2797	1005+00.00

M:\11_31 and US 14 Culvert Removals (12-154-005)\Design\Civil\CADD Sheets\1131US14-shr-align_14.dgn

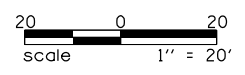
	USER NAME = JuanS	DESIGNED - DPA	REVISED -
	PLOT SCALE = 1"=20'	DRAWN - JPS	REVISED -
	PLOT DATE = 1/21/2016	CHECKED - TWB	REVISED -
		DATE - 11/30/15	REVISED -

**STATE OF ILLINOIS
DEPARTMENT OF TRANSPORTATION**

**US 14 OVER DITCH CULVERT REMOVAL
ALIGNMENT, TIES AND BENCHMARKS**

SCALE: 1"=20' SHEET 1 OF 1 SHEETS STA. TO STA.

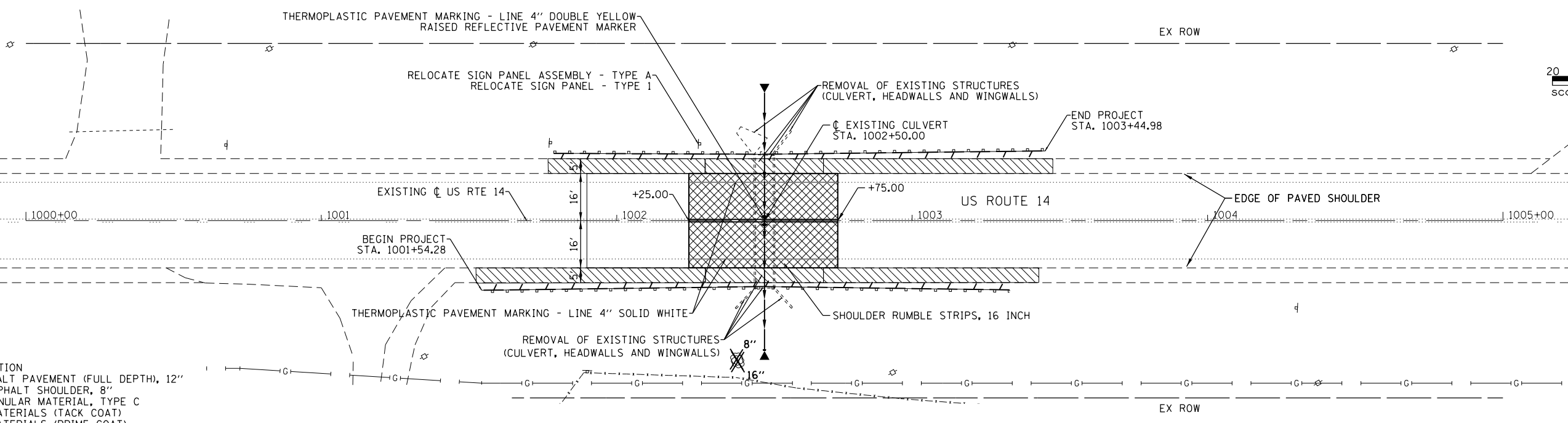
F.A.P. RTE.	SECTION	COUNTY	TOTAL SHEETS	SHEET NO.
305	2015-009I	McHENRY	19	8
CONTRACT NO. 62A63				
ILLINOIS FED. AID PROJECT				



DATE	
BY	
PLAN	
NO. BOOK	
NO.	
SURVEYED	
PLOTTED	
ALIGNMENT CHECKED	
ASD FILE NAME	

DATE	
BY	
PROFILE	
NO. BOOK	
NO.	
SURVEYED	
PLOTTED	
GRADES CHECKED	
ASD FILE NAME	

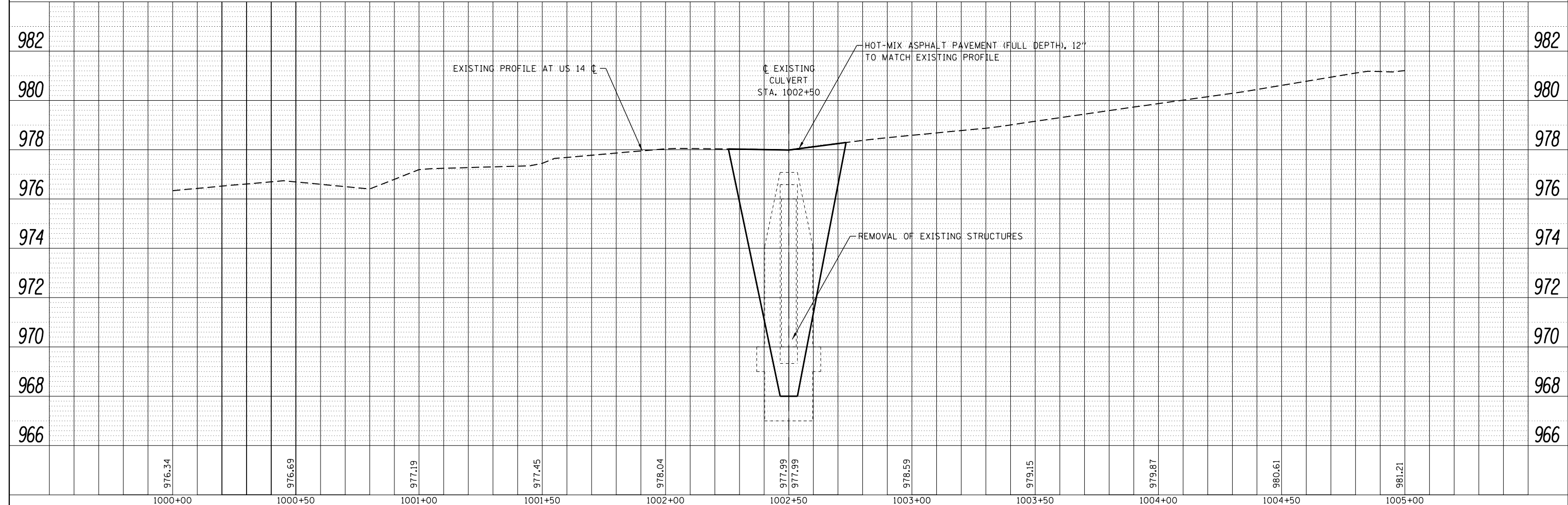
M:\11_31 and US 14 Culvert Removals (12:154-0028)\Design\Civil\CADD Sheets\12:154-0028-11.dwg
 Default



LEGEND

- EARTH EXCAVATION
- HOT-MIX ASPHALT PAVEMENT (FULL DEPTH), 12"
- & HOT-MIX ASPHALT SHOULDER, 8"
- SUBGRADE GRANULAR MATERIAL, TYPE C
- BITUMINOUS MATERIALS (TACK COAT)
- BITUMINOUS MATERIALS (PRIME COAT)
- GRANULAR CULVERT BACKFILL

- TREE REMOVAL (WITH IN DIA.)
- GUARDRAIL REMOVAL



	1000+00	1000+50	1001+00	1001+50	1002+00	1002+50	1003+00	1003+50	1004+00	1004+50	1005+00
	976.34	976.69	977.19	977.45	978.04	977.99 977.99	978.59	979.15	979.87	980.61	981.21

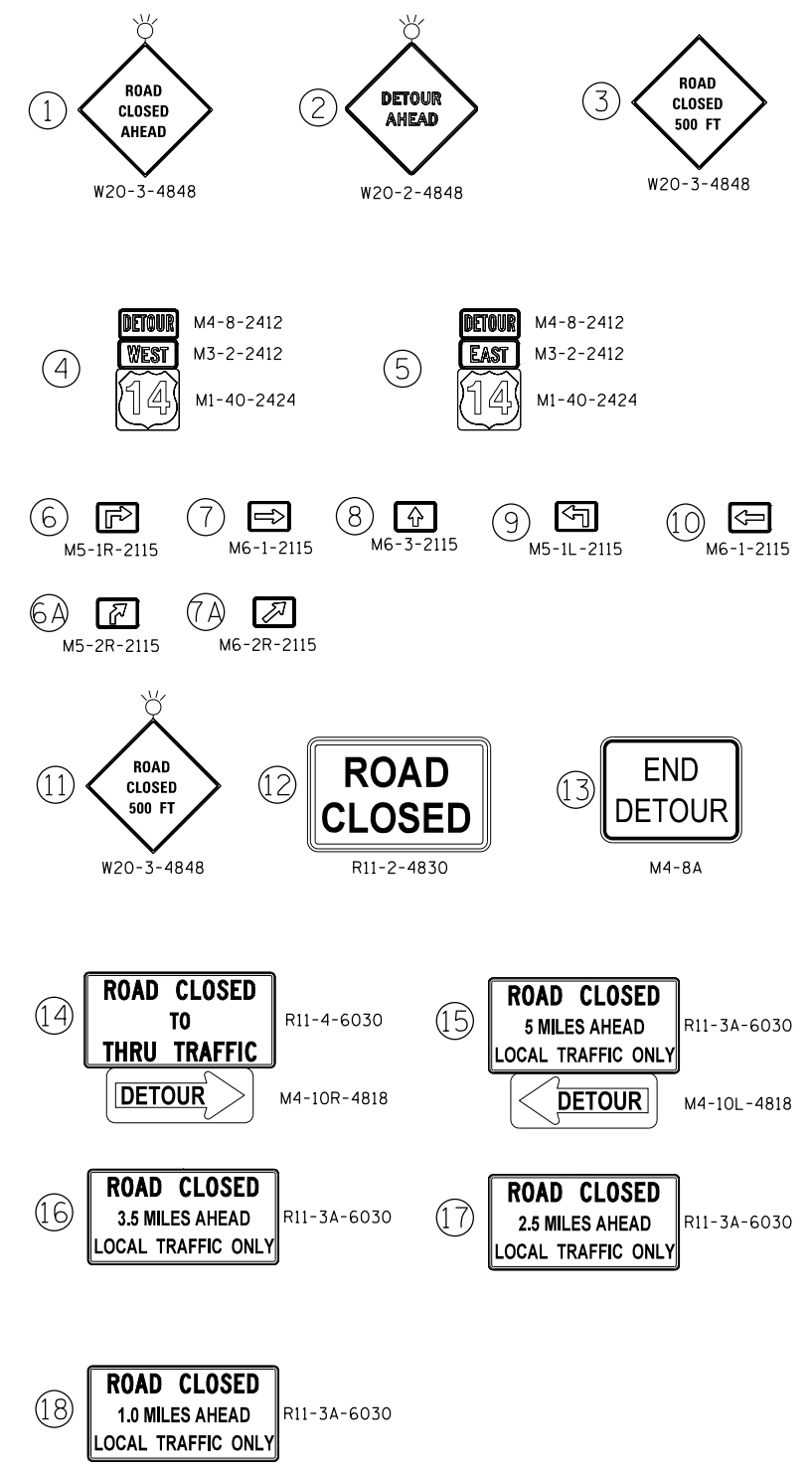
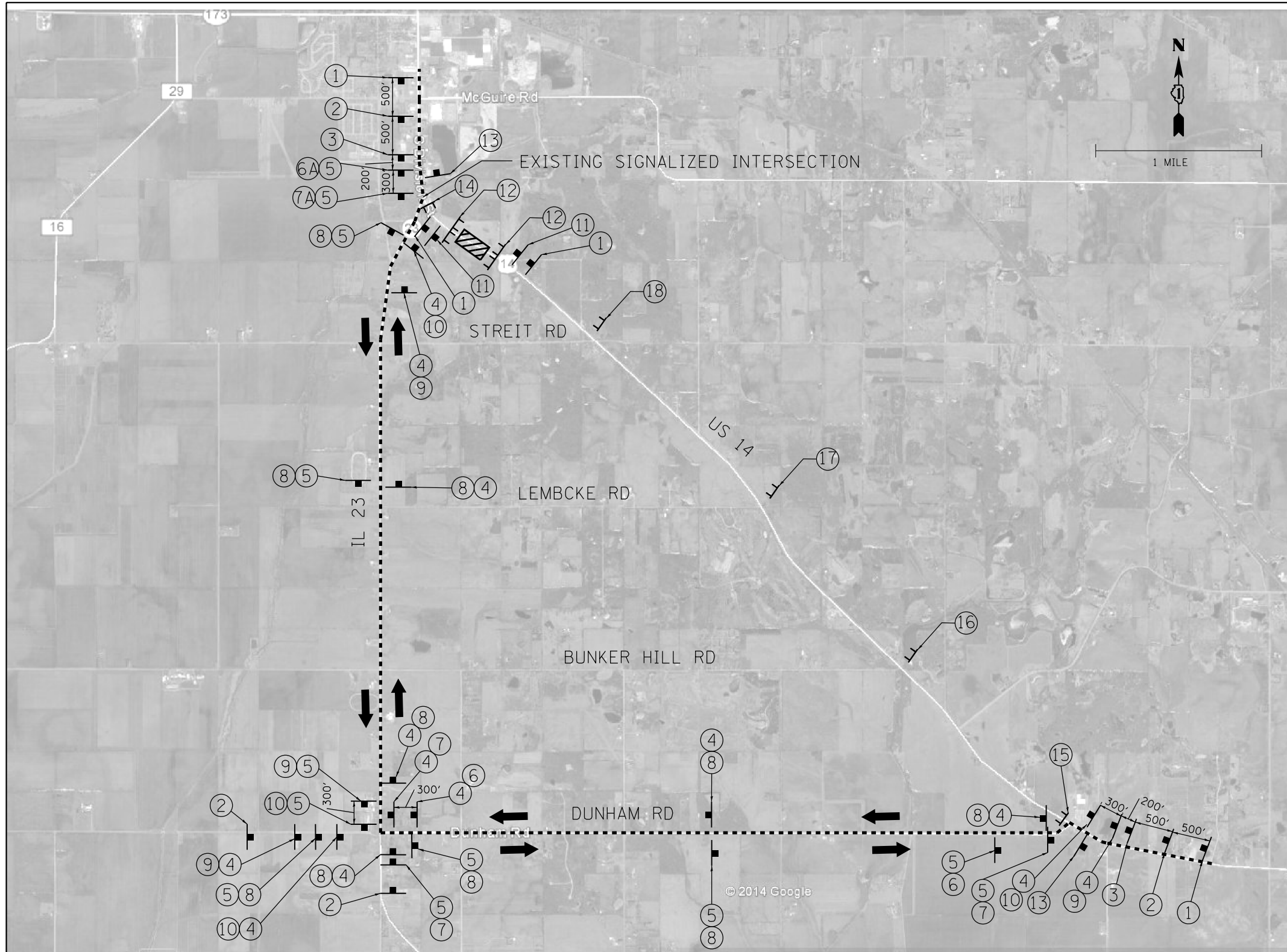


USER NAME = DavidL	DESIGNED - DPA	REVISED -
	DRAWN - JPS	REVISED -
PLOT SCALE = 1"=20'	CHECKED - TWB	REVISED -
PLOT DATE = 1/29/2016	DATE - 01/29/16	REVISED -

**STATE OF ILLINOIS
DEPARTMENT OF TRANSPORTATION**

US 14 OVER DITCH CULVERT REMOVAL PLAN AND PROFILE & PAVEMENT MARKINGS	
SCALE: 1"=20'	SHEET 1 OF 1 SHEETS STA. TO STA.

F.A.P. RTE. 305	SECTION 2015-009I	COUNTY MCHEMRY	TOTAL SHEETS 19	SHEET NO. 9
CONTRACT NO. 62A63				
ILLINOIS FED. AID PROJECT				



NOTES

1. PLACEMENT AND SPACING OF SIGNS AND BARRICADES SHALL BE IN ACCORDANCE WITH TC-21 (DETOUR SIGNING FOR CLOSING STATE HIGHWAYS).
2. THE COST OF SUPPLYING, ERECTING AND MAINTAINING BARRICADES, WARNING LIGHTS AND ALL SIGNS, INCLUDING SIGN PANEL OVERLAYS, SHALL BE INCLUDED IN THE CONTRACT COST OF TRAFFIC CONTROL AND PROTECTION (SPECIAL).
3. ACCESS TO ALL PRIVATE ENTRANCES SHALL BE MAINTAINED.
4. ALL SIGNALIZED INTERSECTIONS ALONG THE DETOUR ROUTE SHALL IMPLEMENT TEMPORARY TRAFFIC SIGNAL TIMING.

LEGEND

- DETOUR ROUTE
- ▨ CONSTRUCTION ZONE
- 1 TYPE III BARRICADE WITH TWO FLASHING LIGHTS

M:\IL_31 and US 14 Culvert Removals (12-154-0025)\Design\Civil\CADD Sheets\IL31US14-shr-detour-14.dgn



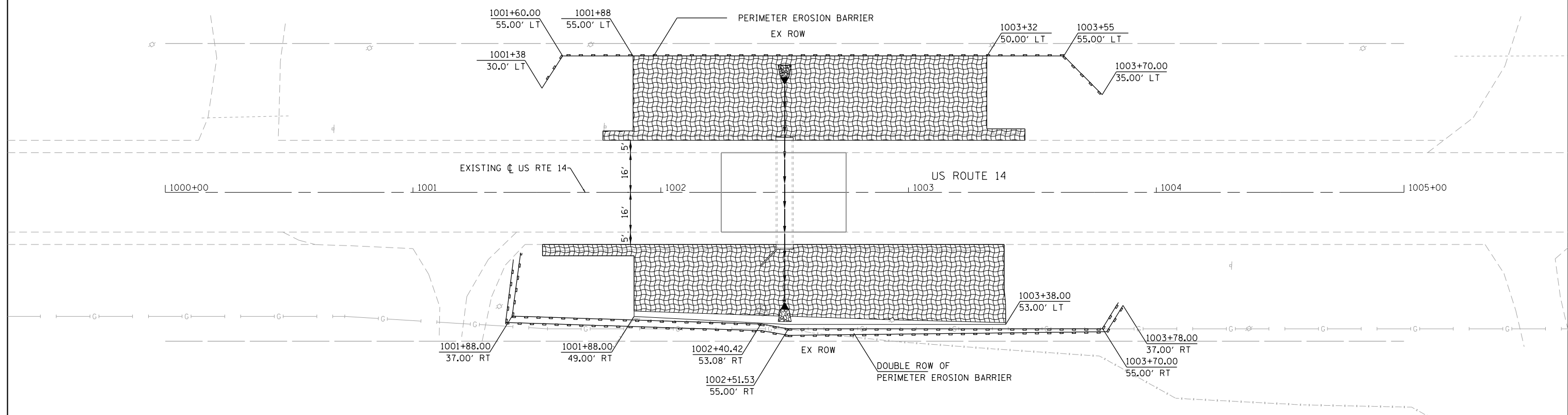
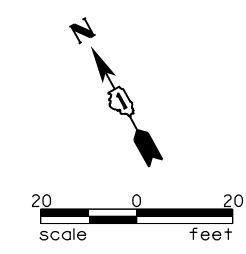
USER NAME = JuanS	DESIGNED - DPA	REVISED -
	DRAWN - JPS	REVISED -
PLOT SCALE = NTS	CHECKED - TWB	REVISED -
PLOT DATE = 1/21/2016	DATE - 11/30/15	REVISED -

**STATE OF ILLINOIS
DEPARTMENT OF TRANSPORTATION**

**US 14 OVER DITCH CULVERT REMOVAL
TRAFFIC CONTROL DETOUR PLAN**

SCALE: NTS SHEET 1 OF 1 SHEETS STA. TO STA.

F.A.P. RTE.	SECTION	COUNTY	TOTAL SHEETS	SHEET NO.
305	2015-009I	McHENRY	19	10
				CONTRACT NO. 62A63
ILLINOIS FED. AID PROJECT				



TEMPORARY EROSION CONTROL NOTES

1. THE CONTRACTOR SHALL INSTALL PERIMETER EROSION BARRIER PRIOR TO STRIPPING OF VEGETATION.
2. RUNOFF FROM EXCAVATION AREAS SHALL LEAVE THE SITE THROUGH SEDIMENT CONTROL DEVICES. THE CONTRACTOR SHALL ADJUST HIS OPERATION AND IMPLEMENT EROSION CONTROL MEASURES ACCORDINGLY.
3. THE CONTRACTOR SHALL SURROUND ANY NECESSARY EARTH STOCKPILES WITH PERIMETER EROSION BARRIER. COST OF PERIMETER EROSION BARRIER FOR STOCKPILES SHALL BE INCLUDED IN COST OF EARTH EXCAVATION.
4. THE CONTRACTOR SHALL MAINTAIN ALL EROSION CONTROL DEVICES AT ALL TIMES. EROSION CONTROL DEVICES SHALL BE INSPECTED EVERY SEVEN CALENDAR DAYS OR WITHIN 24 HOURS AFTER A 1/2 INCH RAINFALL OR SNOWFALL.
5. THE CONTRACTOR SHALL SEED ALL DISTURBED AREAS AS SOON AS PRACTICAL AFTER CONSTRUCTION ACTIVITIES IN THAT AREA HAVE BEEN CONCLUDED. AREAS THAT HAVE STEEP SLOPES OR WILL NOT RECEIVE PERMANENT LANDSCAPING SHALL BE TEMPORARILY SEEDED. ALL FLATTER AREAS OR AREAS WHERE NO FURTHER WORK IS TO OCCUR FOR ONE MONTH OR MORE SHALL BE SEEDED AND COVERED WITH AN EROSION CONTROL BLANKET WITHIN SEVEN (7) CALENDAR DAYS.

NOTE TO REVIEWER:
 ADJACENT WETLAND BOUNDARY
 WILL BE SHOWN WHEN DELINEATION
 IS PROVIDED BY IDOT

LEGEND

- TOPSOIL EXCAVATION AND PLACEMENT SUPPLEMENTED BY FURNISH AND PLACE, 6" TOPSOIL SEEDING, CLASS 3 (MODIFIED) MULCH, METHOD 3
- STONE RIPRAP, CLASS A2
- PERIMETER EROSION BARRIER

M:\11_31 and US 14 Culvert Removals (12-154-0025)\Design\Civil\CADD Sheets\1131US14-sht-eros.14.dgn



USER NAME = JuanS	DESIGNED - DPA	REVISED -
PLOT SCALE = 1"=20'	DRAWN - JPS	REVISED -
PLOT DATE = 1/21/2016	CHECKED - TWB	REVISED -
	DATE - 11/30/15	REVISED -

**STATE OF ILLINOIS
 DEPARTMENT OF TRANSPORTATION**

**US 14 OVER DITCH CULVERT REMOVAL
 EROSION AND SEDIMENT CONTROL PLAN**

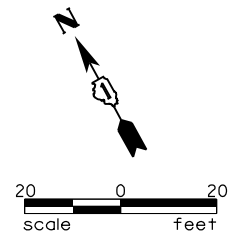
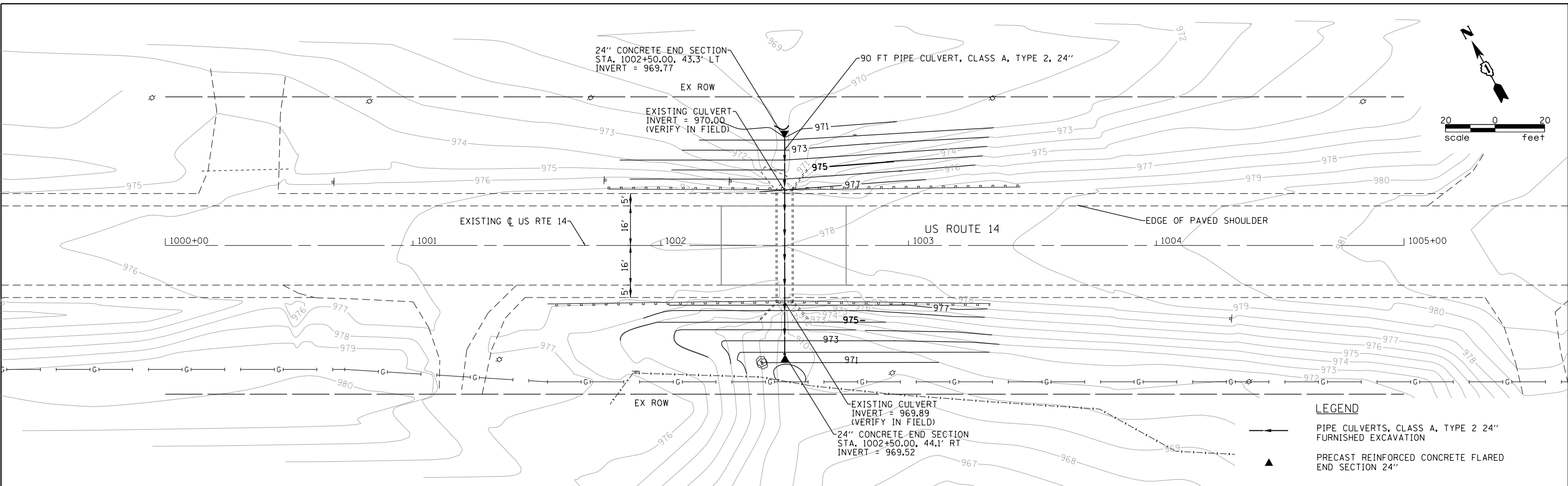
SCALE: 1"=20' SHEET 1 OF 1 SHEETS STA. TO STA.

F.A.P. RTE.	SECTION	COUNTY	TOTAL SHEETS	SHEET NO.
305	2015-009I	McHENRY	19	11
CONTRACT NO. 62A63				
ILLINOIS FED. AID PROJECT				

PLAN	SURVEYED	DATE
	PLOTTED	
	GRADES CHECKED	
	ALIGNMENT CHECKED	
	BY	
	DATE	
	NOTE BOOK NO.	
	CADD FILE NAME	

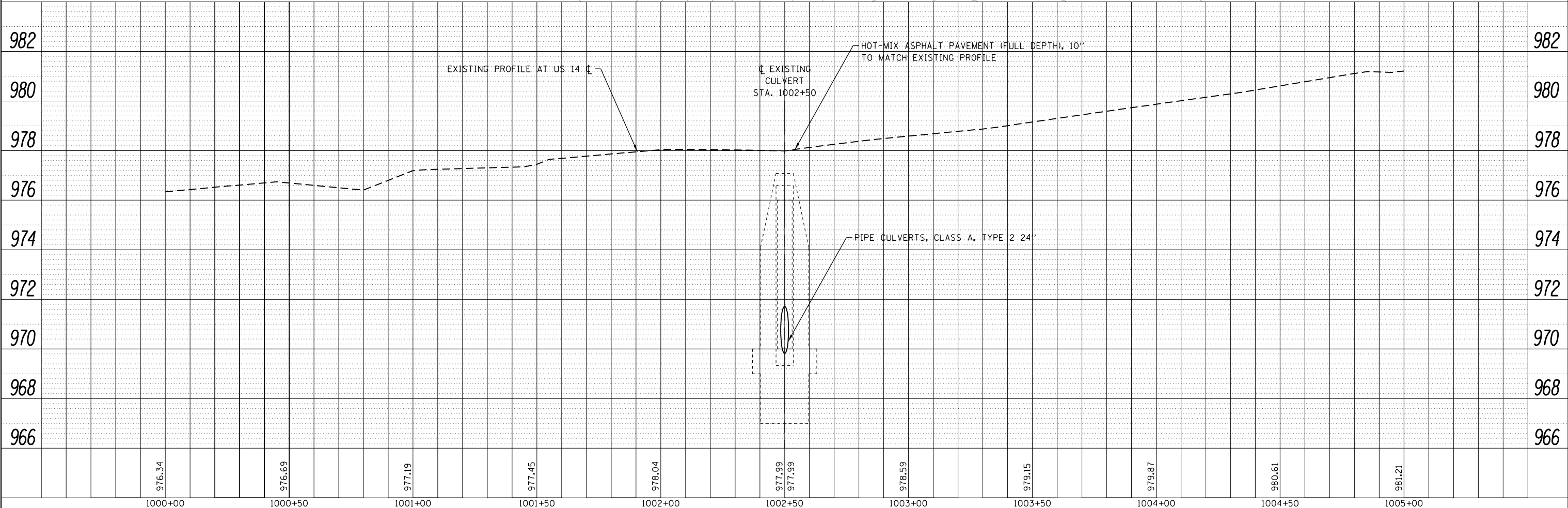
PROFILE	SURVEYED	DATE
	PLOTTED	
	GRADES CHECKED	
	ALIGNMENT CHECKED	
	BY	
	DATE	
	NOTE BOOK NO.	
	CADD FILE NAME	

M:\11_31 and US 14 Culvert Removals\112-154-0091\Design\Civil\CADD Sheets\112-154-0091-01.dwg
 Default



LEGEND

—	PIPE CULVERTS, CLASS A, TYPE 2 24"
▲	FURNISHED EXCAVATION
▲	PRECAST REINFORCED CONCRETE FLARED END SECTION 24"



1000+00	1000+50	1001+00	1001+50	1002+00	1002+50	1003+00	1003+50	1004+00	1004+50	1005+00
976.34	976.69	977.19	977.45	978.04	977.99 977.99	978.59	979.15	979.87	980.61	981.21



USER NAME = JuanS	DESIGNED - DPA	REVISED -
	DRAWN - JPS	REVISED -
PLOT SCALE = 1"=20'	CHECKED - TWB	REVISED -
PLOT DATE = 1/21/2016	DATE - 11/30/15	REVISED -

**STATE OF ILLINOIS
DEPARTMENT OF TRANSPORTATION**

US 14 OVER DITCH CULVERT REMOVAL DRAINAGE AND UTILITY PLAN	
SCALE: 1"=20'	SHEET 1 OF 1 SHEETS STA. TO STA.

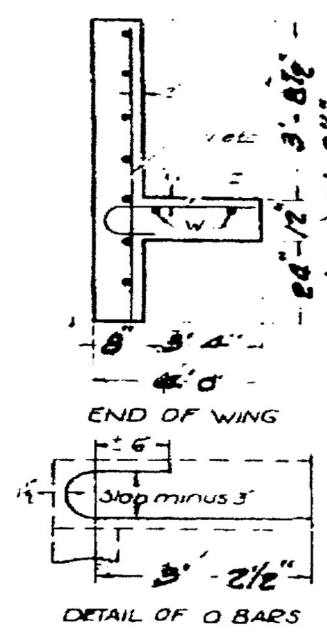
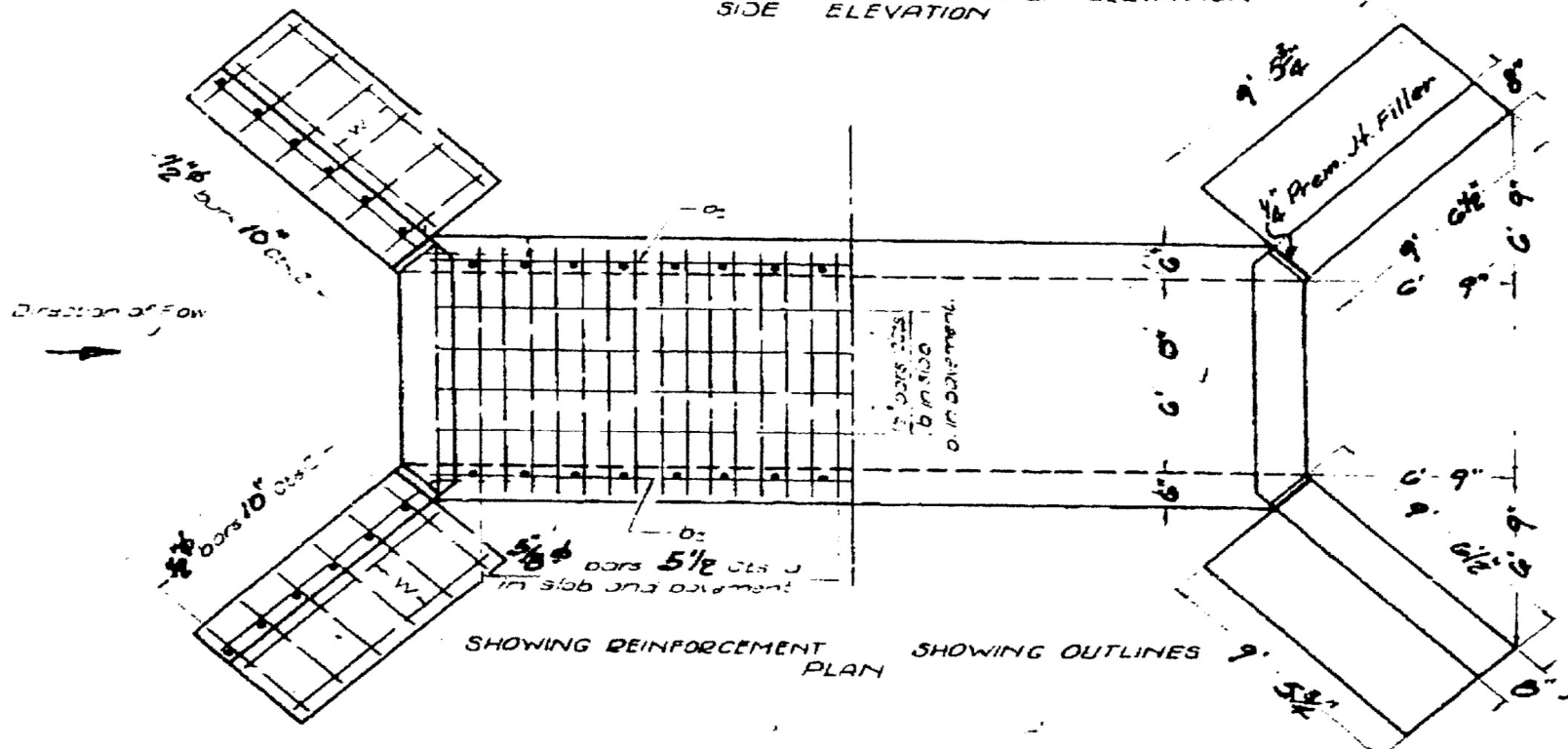
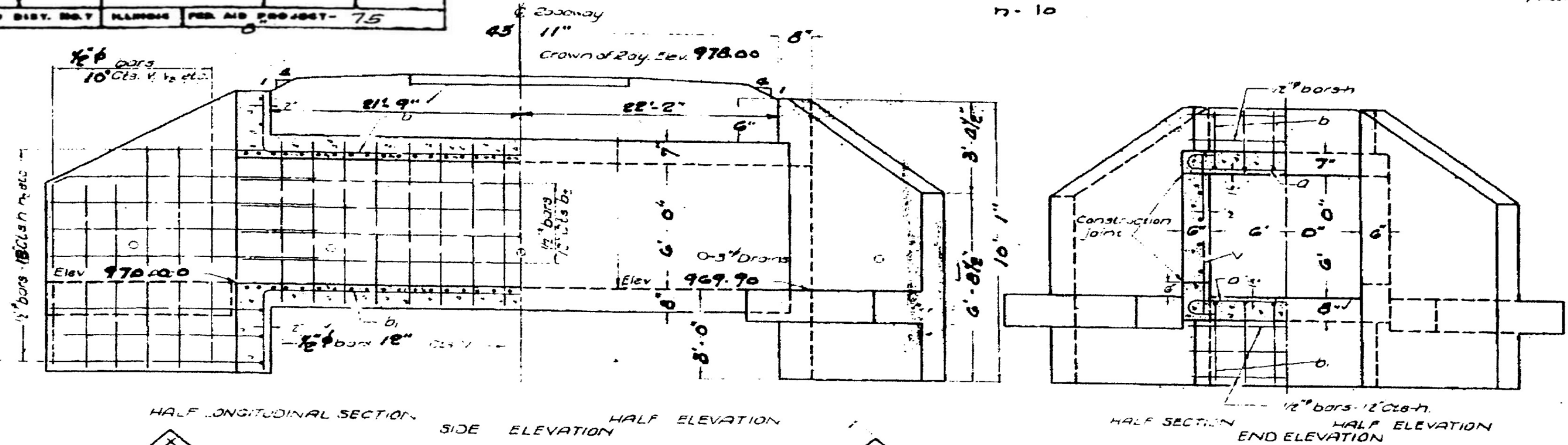
F.A.P. RTE. 305	SECTION 2015-0091	COUNTY McHENRY	TOTAL SHEETS 19	SHEET NO. 12
CONTRACT NO. 62A63			ILLINOIS FED. AID PROJECT	

ROAD DISTRICT	SECTION	COUNTY	TOTAL SHEETS	SHEET NO.
19	29R	McHenry	61	55
FED. ROAD DIST. NO. 7 ILLINOIS FED. AID PROJECT - 75				

STATE OF ILLINOIS
DEPARTMENT OF PUBLIC WORKS & BUILDINGS
DIVISION OF HIGHWAYS

$f_c = 20000$
 $f_s = 1200$
 $n = 10$

SHEET NO. 1
/ SHEETS



BILL OF MATERIAL

Bars	Number	Size	Length
a	190	5/8"	8'-6"
b	12	1/2"	23'-6"
b1	18	5/8"	17'-6"
b2	24	1/2"	22'-6"
c	6	1/2"	6'-6"
d	24	1/2"	8'-8"
e	80	1/2"	7'-0"
f	18	1/2"	9'-3"
g	12	1/2"	8'-6"
h	12	1/2"	7'-8"
i	12	1/2"	6'-6"
j	6	1/2"	4'-3"
k	24	1/2"	4'-6"
Class X Concrete Cyds.			38.1
Reinforcing Steel Lbs			3550

COMPUTED	—
CHECKED	— C.R. Nichols
DRAWN	— H.L. Ekin
CHECKED	— J.A. Taylor
SPECIAL	—
ABRANGED	—
CHECKED	—

EXAMINED 1-25-14
 DRAWN
 CHECKED
 APPROVED
 CIVIL ENGINEER

NOTES:
 Class X concrete shall be used throughout.
 All reinforcing steel shall be wired securely in place before the concrete is poured.
 Premolded Jt. Filler shall conform to Act 115.67 or 115.68 of the Stat. Specifications.

056-0267
 SPECIAL CULVERT DESIGN
 STA. 82+10
 S.B.I. RTE 19
 SEC. 29R - McHENRY CO.

Standard 1550

EXISTING CULVERT PLANS FOR REFERENCE

M:\11_31 and US 14 Culvert Removals (12-154-9025)\Design\Civil\CADD Sheets\11L31US14-ent-details_14.dgn

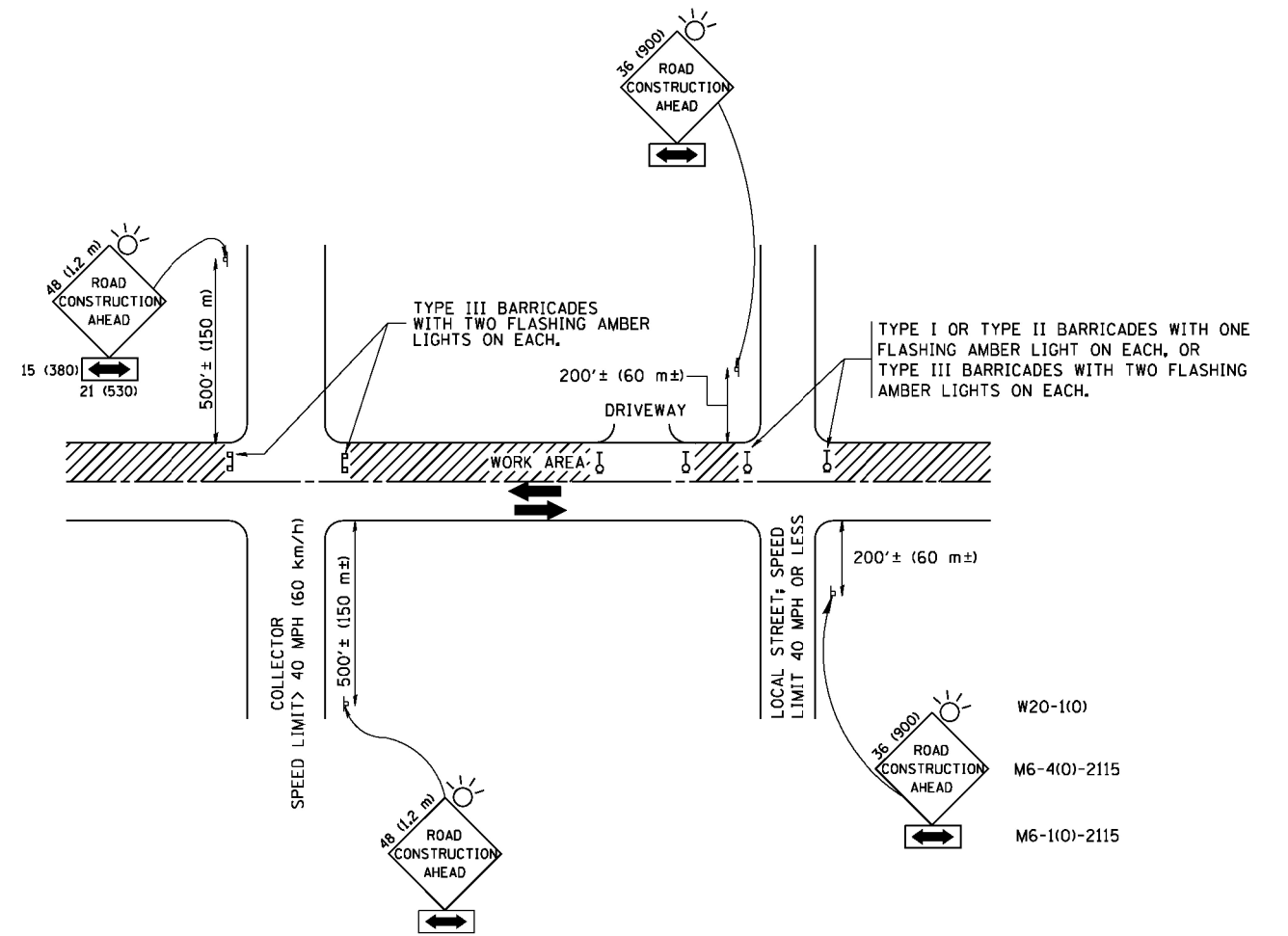


USER NAME	DESIGNED	REVISED
DESIGNED	DRAWN	REVISED
PLLOT SCALE	CHECKED	REVISED
DATE	DATE	REVISED

STATE OF ILLINOIS
DEPARTMENT OF TRANSPORTATION

US 14 OVER DITCH CULVERT REMOVAL	
EXISTING CULVERT PLAN	
SCALE: NTS	SHEET 1 OF 1 SHEETS
STA.	TO STA.

F.A.P. RTE.	SECTION	COUNTY	TOTAL SHEETS	SHEET NO.
305	2015-0091	McHENRY	19	13
CONTRACT NO. 62A63				
ILLINOIS FED. AID PROJECT				



TRAFFIC CONTROL AND PROTECTION FOR SIDE ROADS, INTERSECTIONS, AND DRIVEWAYS

NOTES:

- A. FOR NO LANE RESTRICTION ON THE SIDE ROAD OR DRIVEWAYS
 1. SIDE ROAD WITH A SPEED LIMIT OF 40 MPH (60 km/h) OR LESS AS SHOWN ON THE DRAWING AND AS DIRECTED BY THE ENGINEER:
 - a) ONE ROAD CONSTRUCTION AHEAD SIGN 36 x 36 (900x900) WITH A FLASHER AND FLAG MOUNTED ON IT APPROXIMATELY 200' (60 m) IN ADVANCE OF THE MAIN ROUTE.
 - b) THE CLOSED PORTION OF THE MAIN ROUTE SHALL BE PROTECTED BY BLOCKING WITH TYPE I, TYPE II OR TYPE III BARRICADES, 1/3 OF THE CROSS SECTION OF THE CLOSED PORTION.
 2. SIDE ROAD WITH A SPEED LIMIT GREATER THAN 40 MPH (60 km/h) AS SHOWN ON THE DRAWING AND AS DIRECTED BY THE ENGINEER:
 - a) ONE ROAD CONSTRUCTION AHEAD SIGN 48 x 48 (1.2 m x 1.2 m) WITH A FLASHER MOUNTED ON IT APPROXIMATELY 500' (150 m) IN ADVANCE OF THE MAIN ROUTE.
 - b) THE CLOSED PORTION OF THE MAIN ROUTE SHALL BE PROTECTED BY BLOCKING WITH TYPE III BARRICADES, 1/2 OF THE CROSS SECTION OF THE CLOSED PORTION.
- 3. WHEN THE SIDE ROAD LIES BETWEEN THE BEGINNING OF THE MAINLINE SIGNING AND THE WORK ZONE, A SINGLE HEADED ARROW (M6-1) SHALL BE USED IN LIEU OF THE DOUBLE HEADED ARROW (M6-4).
- B. FOR A LANE CLOSURE ON A SIDE ROAD OR DRIVEWAY:

USE APPLICABLE PORTIONS OF THE TYPICAL APPLICATION OF TRAFFIC CONTROL DEVICES (STD. 701501, STD. 701606 OR THE APPROPRIATE STANDARD). THE SPACING OF SIGNS AND BARRICADES SHALL BE ADJUSTED FOR FIELD CONDITIONS AS DIRECTED BY THE ENGINEER. THE DIRECTIONAL ARROW SHALL BE COVERED OR REMOVED WHEN NO LONGER CONSISTENT WITH THE SIDE ROAD LANE CLOSURE.
- C. ADVANCE WARNING SIGNS ARE TO BE OMITTED ON DRIVEWAY UNLESS OTHERWISE NOTED.
- D. THE TRAFFIC CONTROL AND PROTECTION FOR SIDE ROADS, INTERSECTIONS, AND DRIVEWAYS SHALL BE INCIDENTAL TO THE COST OF SPECIFIED TRAFFIC CONTROL STANDARDS OR ITEMS.

All dimensions are in millimeters (inches) unless otherwise shown.

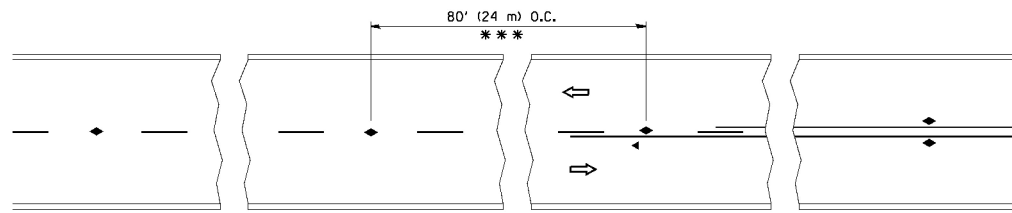
FILE NAME = W:\distatd\22x34\c10.dgn	USER NAME = geglanoht	DESIGNED - LHA	REVISED - J. OBERLE 10-16-95
		DRAWN -	REVISED - A. HOUSEH 03-06-96
	PLOT SCALE = 50.000' / IN.	CHECKED -	REVISED - A. HOUSEH 10-15-96
	PLOT DATE = 1/4/2008	DATE - 06-89	REVISED - T. RAMMACHER 01-06-00

STATE OF ILLINOIS
DEPARTMENT OF TRANSPORTATION

TRAFFIC CONTROL AND PROTECTION FOR
SIDE ROADS, INTERSECTIONS, AND DRIVEWAYS

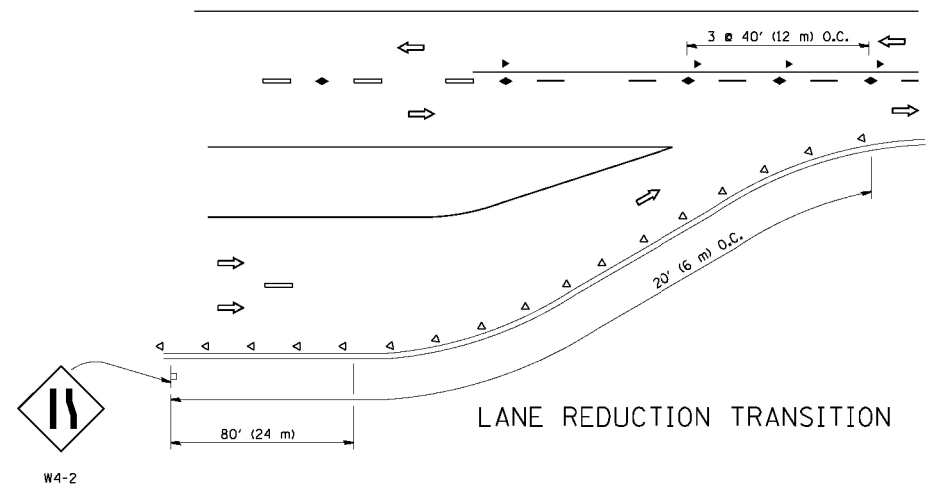
SCALE: NONE SHEET NO. 1 OF 1 SHEETS STA. TO STA.

F.A.P. RTE.	SECTION	COUNTY	TOTAL SHEETS	SHEET NO.
305	2015-0091	McHENRY	19	14
TC-10			CONTRACT NO. 62A63	
FED. ROAD DIST. NO. 1 ILLINOIS FED. AID PROJECT				

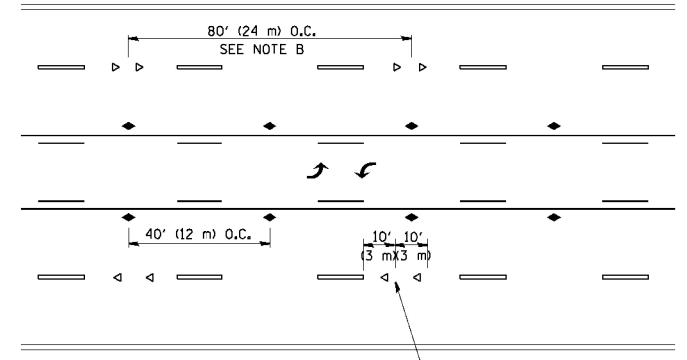


*** REDUCE TO 40' (12 m) O.C. ON CURVES WITH POSTED OR ADVISORY SPEED 45 M.P.H. (70 km/h) OR LESS.

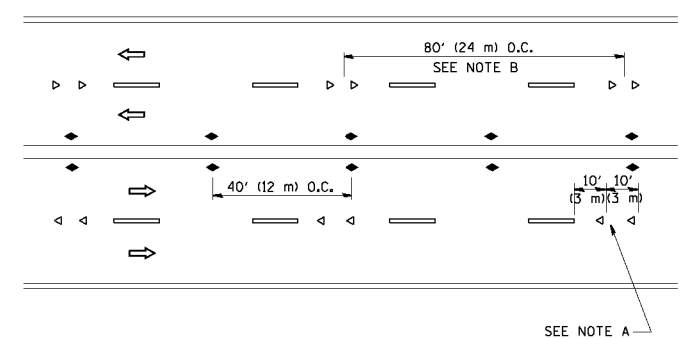
TWO-LANE/TWO-WAY



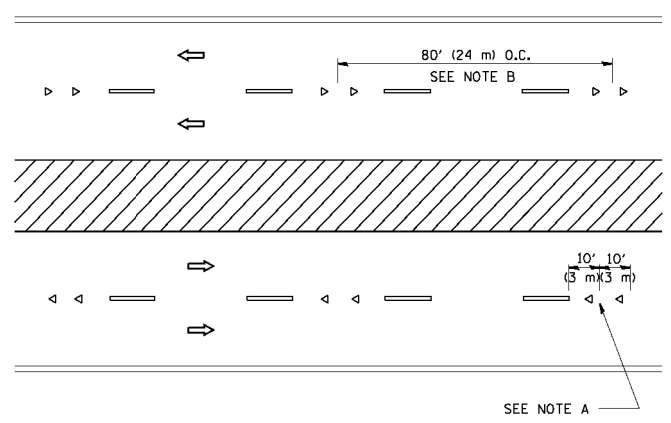
LANE REDUCTION TRANSITION



TWO-WAY LEFT TURN



MULTI-LANE/UNDIVIDED



MULTI-LANE/DIVIDED

GENERAL NOTES

1. MARKERS USED WITH DASHED LINES SHALL BE CENTERED IN THE GAP BETWEEN SEGMENTS.
2. MARKERS USED ADJACENT TO SOLID LINES SHALL BE OFFSET 2 TO 3 (50 TO 75) TOWARD TRAFFIC AS SHOWN.
3. MARKERS THROUGH TANGENTS LESS THAN 500' (150 m) IN LENGTH BETWEEN CURVES SHALL BE INSTALLED AT THE LESSER OF THE TWO CURVE SPACINGS.

SYMBOLS

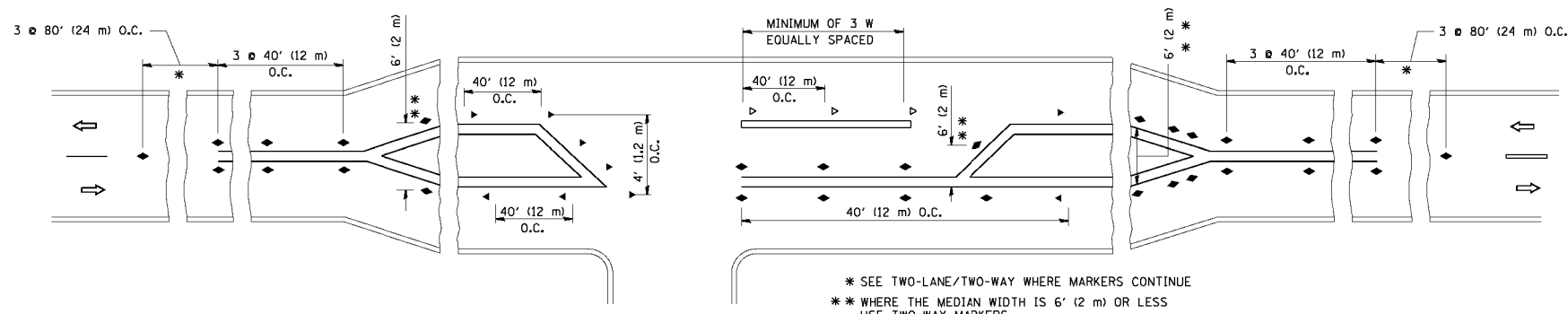
- YELLOW STRIPE
- WHITE STRIPE
- ◀ ONE-WAY AMBER MARKER
- ◁ ONE-WAY CRYSTAL MARKER (W/O)
- ◆ TWO-WAY AMBER MARKER

LANE MARKER NOTES

- A. USE DOUBLE LANE LINE MARKERS SPACED AS SHOWN.
- B. REDUCE TO 40' (12 m) O.C. ON CURVES WHERE ADVISORY SPEEDS ARE 10 M.P.H. (20 km/h) LOWER THAN POSTED SPEEDS.

DESIGN NOTES

1. DOUBLE LANE LINE MARKERS SHALL BE USED UNLESS SPECIFIED OTHERWISE.
2. EXCEPT AS SHOWN ON THE LANE REDUCTION TRANSITION AND FREEWAY EXIT RAMP DETAIL, MARKERS ARE NOT TO BE SPECIFIED ON RIGHT EDGE LINES.
3. THE EXACT MARKER LIMITS, SPACING, AND COLOR SHALL BE INCLUDED IN THE PLANS WHEN STANDARD SPECIFICATIONS ARE NOT BEING USED.
4. MARKERS SHOULD NOT BE USED ALONGSIDE CURBS EXCEPT FOR EXTREMELY SHORT SECTIONS OF CURBS WHERE NOT MORE THAN TWO MARKERS WOULD BE INVOLVED.

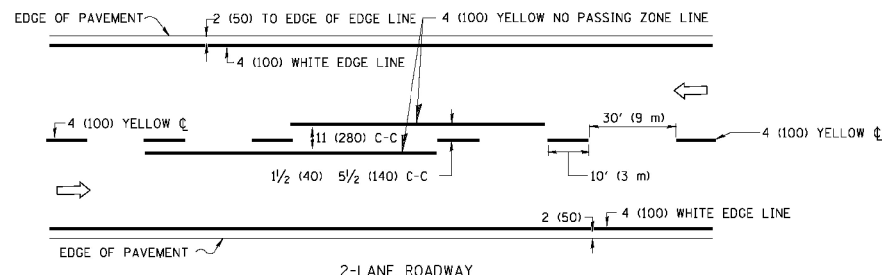


* SEE TWO-LANE/TWO-WAY WHERE MARKERS CONTINUE
 ** WHERE THE MEDIAN WIDTH IS 6' (2 m) OR LESS USE TWO-WAY MARKERS.

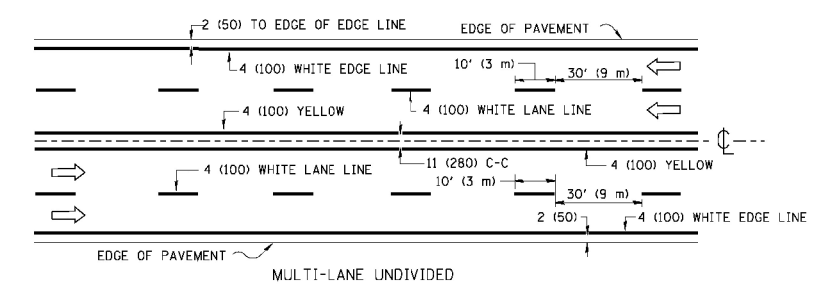
LEFT TURN

All dimensions are in inches (millimeters) unless otherwise shown.

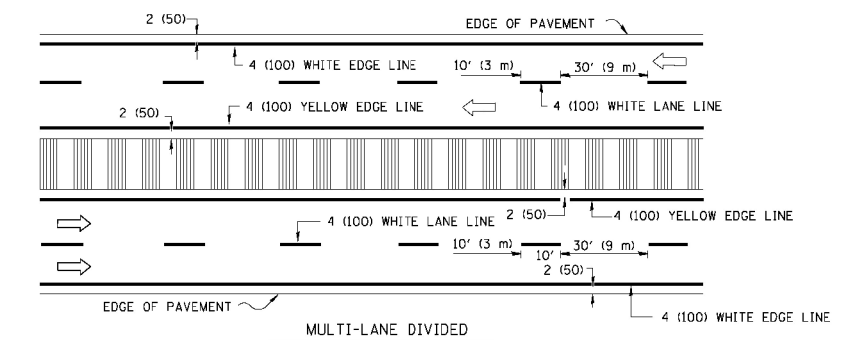
FILE NAME =	USER NAME = l1eysa	DESIGNED -	REVISED - T. RAMMACHER 09-19-94	STATE OF ILLINOIS DEPARTMENT OF TRANSPORTATION	TYPICAL APPLICATIONS			F.A.P. RTE.	SECTION	COUNTY	TOTAL SHEETS	SHEET NO.
0:\p\work\pwi\dot\l1eysa\0108315\tcl1.dgn		DRAWN -	REVISED - T. RAMMACHER 03-12-99		RAISED REFLECTIVE PAVEMENT MARKERS (SNOW-PLOW RESISTANT)			305	2015-009I	McHENRY	19	15
		CHECKED -	REVISED - T. RAMMACHER 01-06-00		SCALE: NONE	SHEET NO. 1 OF 1 SHEETS	STA.	TO STA.	TC-11		CONTRACT NO. 62A63	
		DATE -	REVISED - C. JUCIUS 09-09-09		FED. ROAD DIST. NO. 1 ILLINOIS FED. AID PROJECT							



2-LANE ROADWAY



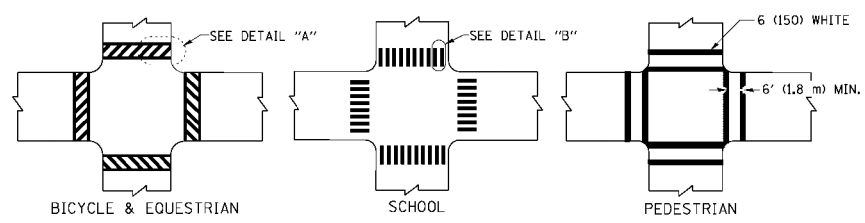
MULTI-LANE UNDIVIDED



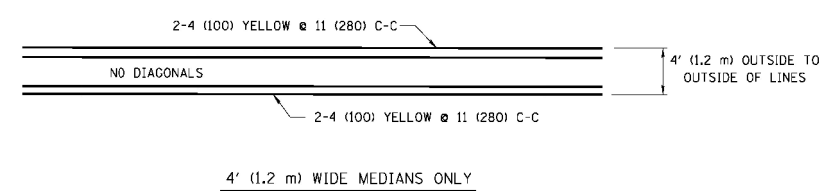
MULTI-LANE DIVIDED WITH MOUNTABLE MEDIAN

NOTE: MEDIANS WITH BARRIER CURB DO NOT REQUIRE AN EDGE LINE

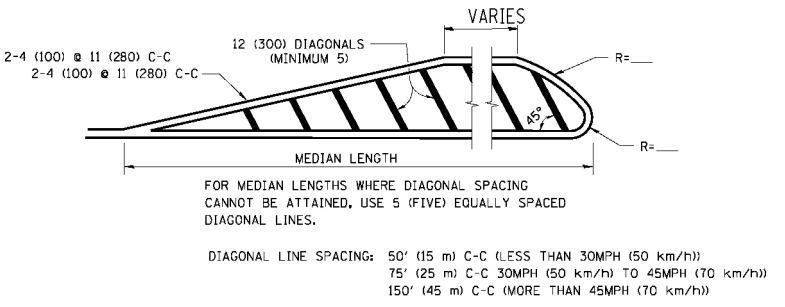
TYPICAL LANE AND EDGE LINE MARKING



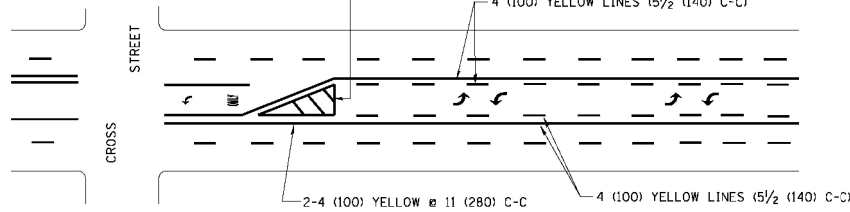
TYPICAL CROSSWALK MARKING



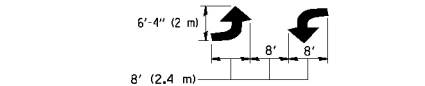
4' (1.2 m) WIDE MEDIANS ONLY



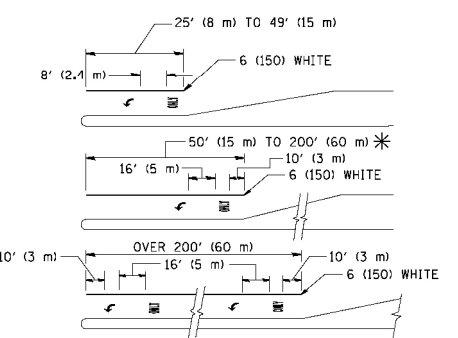
MEDIANS OVER 4' (1.2 m) WIDE



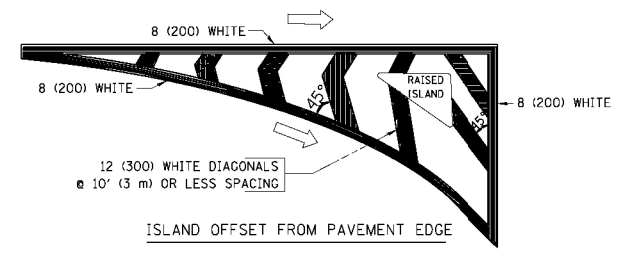
TYPICAL PAINTED MEDIAN MARKING



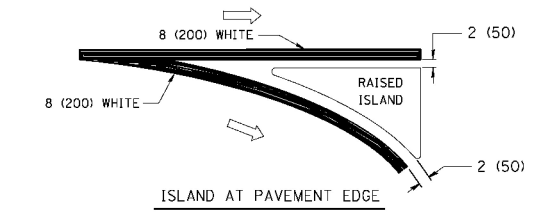
MEDIAN WITH TWO-WAY LEFT TURN LANE



TYPICAL TURN LANE MARKING



ISLAND OFFSET FROM PAVEMENT EDGE



ISLAND AT PAVEMENT EDGE

TYPICAL ISLAND MARKING

TYPE OF MARKING	WIDTH OF LINE	PATTERN	COLOR	SPACING / REMARKS
CENTERLINE ON 2 LANE PAVEMENT	4 (100)	SKIP-DASH	YELLOW	10' (3 m) LINE WITH 30' (9 m) SPACE
CENTERLINE ON MULTI-LANE UNDIVIDED PAVEMENT	2 @ 4 (100)	SOLID	YELLOW	11 (280) C-C
NO PASSING ZONE LINES: FOR ONE DIRECTION	4 (100)	SOLID	YELLOW	5 1/2 (140) C-C FROM SKIP-DASH CENTERLINE
NO PASSING ZONE LINES: FOR BOTH DIRECTIONS	2 @ 4 (100)	SOLID	YELLOW	11 (280) C-C OMIT SKIP-DASH CENTERLINE BETWEEN
LANE LINES	4 (100)	SKIP-DASH	WHITE	10' (3 m) LINE WITH 30' (9 m) SPACE
LANE LINES (EXTENSIONS OF CENTER, LANE OR TURN LANE MARKINGS)	5 (125) ON FREEWAYS	SKIP-DASH	WHITE	10' (3 m) LINE WITH 30' (9 m) SPACE
DOTTED LINES (EXTENSIONS OF CENTER, LANE OR TURN LANE MARKINGS)	SAME AS LINE BEING EXTENDED	SKIP-DASH	SAME AS LINE BEING EXTENDED	2' (600) LINE WITH 6' (1.8 m) SPACE
EDGE LINES	4 (100)	SOLID	YELLOW-LEFT WHITE-RIGHT	OUTLINE MOUNTABLE MEDIANS IN YELLOW; EDGE LINES ARE NOT USED NEXT TO BARRIER CURB
TURN LANE MARKINGS	6 (150) LINE; FULL SIZE LETTERS & SYMBOLS (8' (2.4m))	SOLID	WHITE	SEE TYPICAL TURN LANE MARKING DETAIL
TWO WAY LEFT TURN MARKING	2 @ 4 (100) EACH DIRECTION	SKIP-DASH AND SOLID	YELLOW	10' (3 m) LINE WITH 30' (9 m) SPACE FOR SKIP-DASH; 5 1/2 (140) C-C BETWEEN SOLID LINE AND SKIP-DASH LINE
TWO WAY LEFT TURN MARKING	8' (2.4m) LEFT ARROW	IN PAIRS	WHITE	SEE TYPICAL TWO-WAY LEFT TURN MARKING DETAIL
CROSSWALK LINES (PEDESTRIAN)	2 @ 6 (150)	SOLID	WHITE	NOT LESS THAN 6' (1.8 m) APART
CROSSWALK LINES (BIKE & EQUESTRIAN)	12 (300) @ 45°	SOLID	WHITE	2' (600) APART
CROSSWALK LINES (SCHOOL)	12 (300) @ 90°	SOLID	WHITE	2' (600) APART SEE TYPICAL CROSSWALK MARKING DETAILS.
STOP LINES	24 (600)	SOLID	WHITE	PLACE 4' (1.2 m) IN ADVANCE OF AND PARALLEL TO CROSSWALK, IF PRESENT. OTHERWISE, PLACE AT DESIRED STOPPING POINT, PARALLEL TO CROSSROAD CENTERLINE, WHERE POSSIBLE
PAINTED MEDIANS	2 @ 4 (100) WITH 12 (300) DIAGONALS @ 45°	SOLID	YELLOW; TWO WAY TRAFFIC WHITE; ONE WAY TRAFFIC	11 (280) C-C FOR THE DOUBLE LINE SEE TYPICAL PAINTED MEDIAN MARKING.
NO DIAGONALS USED FOR 4' (1.2 m) WIDE MEDIANS				
GORE MARKING AND CHANNELIZING LINES	8 (200) WITH 12 (300) DIAGONALS @ 45°	SOLID	WHITE	DIAGONALS: 15' (4.5 m) C-C (LESS THAN 30MPH (50 km/h)) 20' (6 m) C-C (30 MPH (50 km/h) TO 45MPH (70 km/h)) 30' (9 m) C-C (OVER 45MPH (70 km/h))
RAILROAD CROSSING	24 (600) TRANSVERSE LINES; "RR" 15 6' (1.8 m) LETTERS; 16 (400) LINE FOR "X"	SOLID	WHITE	SEE STATE STANDARD 780001 AREA OF: "R"=3.6 SQ. FT. (0.33 m ²) EACH "X"=54.0 SQ. FT. (5.0 m ²)
SHOULDER DIAGONALS	12 (300) @ 45°	SOLID	WHITE - RIGHT YELLOW - LEFT	50' (15 m) C-C (LESS THAN 30MPH (50 km/h)) 75' (25 m) C-C (30 MPH (50 km/h) TO 45MPH (70 km/h)) 150' (45 m) C-C (OVER 45MPH (70 km/h))

FOR FURTHER DETAILS ON PAVEMENT MARKING REFER TO STANDARD SPECIFICATIONS FOR ROAD AND BRIDGE CONSTRUCTION AND STATE STANDARD 780001.

All dimensions are in inches (millimeters) unless otherwise shown.

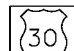
FILE NAME =	USER NAME = drivakosgn	DESIGNED - EVERS	REVISED - T. RAMMACHER 10-27-94
es:\pwork\pwork\drivakosgn\d0108315\tp3.dgn		DRAWN -	REVISED - C. JUCIUS 09-09-09
	PLOT SCALE = 50.000' / IN.	CHECKED -	REVISED -
	PLOT DATE = 9/9/2009	DATE - 03-19-90	REVISED -


STATE OF ILLINOIS
DEPARTMENT OF TRANSPORTATION


DISTRICT ONE			
TYPICAL PAVEMENT MARKINGS			
SCALE: NONE	SHEET NO. 1 OF 1 SHEETS	STA.	TO STA.

F.A.P. RTE.	SECTION	COUNTY	TOTAL SHEETS	SHEET NO.
305	2015-009I	McHENRY	19	16
TC-13		CONTRACT NO. 62A63		
FED. ROAD DIST. NO. 1 ILLINOIS FED. AID PROJECT				



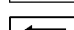
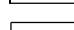

ROUTE MARKERS

 FOR U.S. ROUTES
M1-40-2424



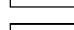
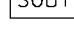
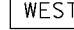
 FOR ILLINOIS ROUTES
M1-50-2424

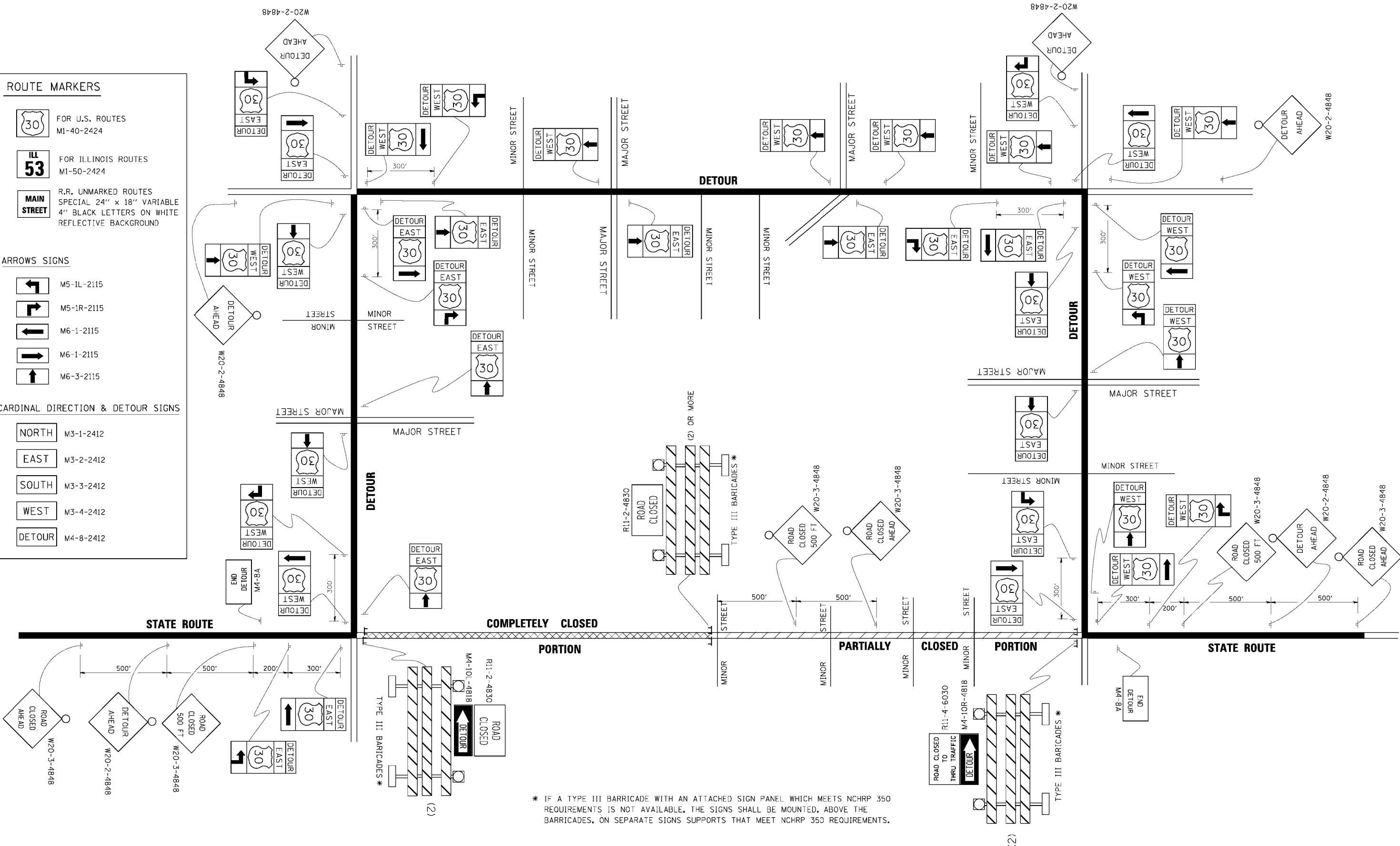
 R.R., UNMARKED ROUTES
SPECIAL 24" x 18" VARIABLE
4" BLACK LETTERS ON WHITE
REFLECTIVE BACKGROUND

ARROWS SIGNS

-  M5-1L-2115
-  M5-1R-2115
-  M6-1-2115
-  M6-1-2115
-  M6-3-2115

CARDINAL DIRECTION & DETOUR SIGNS

-  NORTH M3-1-2412
-  EAST M3-2-2412
-  SOUTH M3-3-2412
-  WEST M3-4-2412
-  DETOUR M4-8-2412



* IF A TYPE III BARRICADE WITH AN ATTACHED SIGN PANEL WHICH MEETS NCHRP 350 REQUIREMENTS IS NOT AVAILABLE, THE SIGNS SHALL BE MOUNTED, ABOVE THE BARRICADES, ON SEPARATE SIGNS SUPPORTS THAT MEET NCHRP 350 REQUIREMENTS.

FILE NAME =	USER NAME =
es:\pwwork\p\WIDOT\DRIVAKDSGN\0108315\1221.dgn	drivakosgn
PLOT SCALE = 49.9999' / IN.	PLOT DATE = 9/14/2009

DESIGNED -	REVISED - 10-18-02
DRAWN -	REVISED - R. BORO 09-14-09
CHECKED -	REVISED -
DATE -	REVISED -

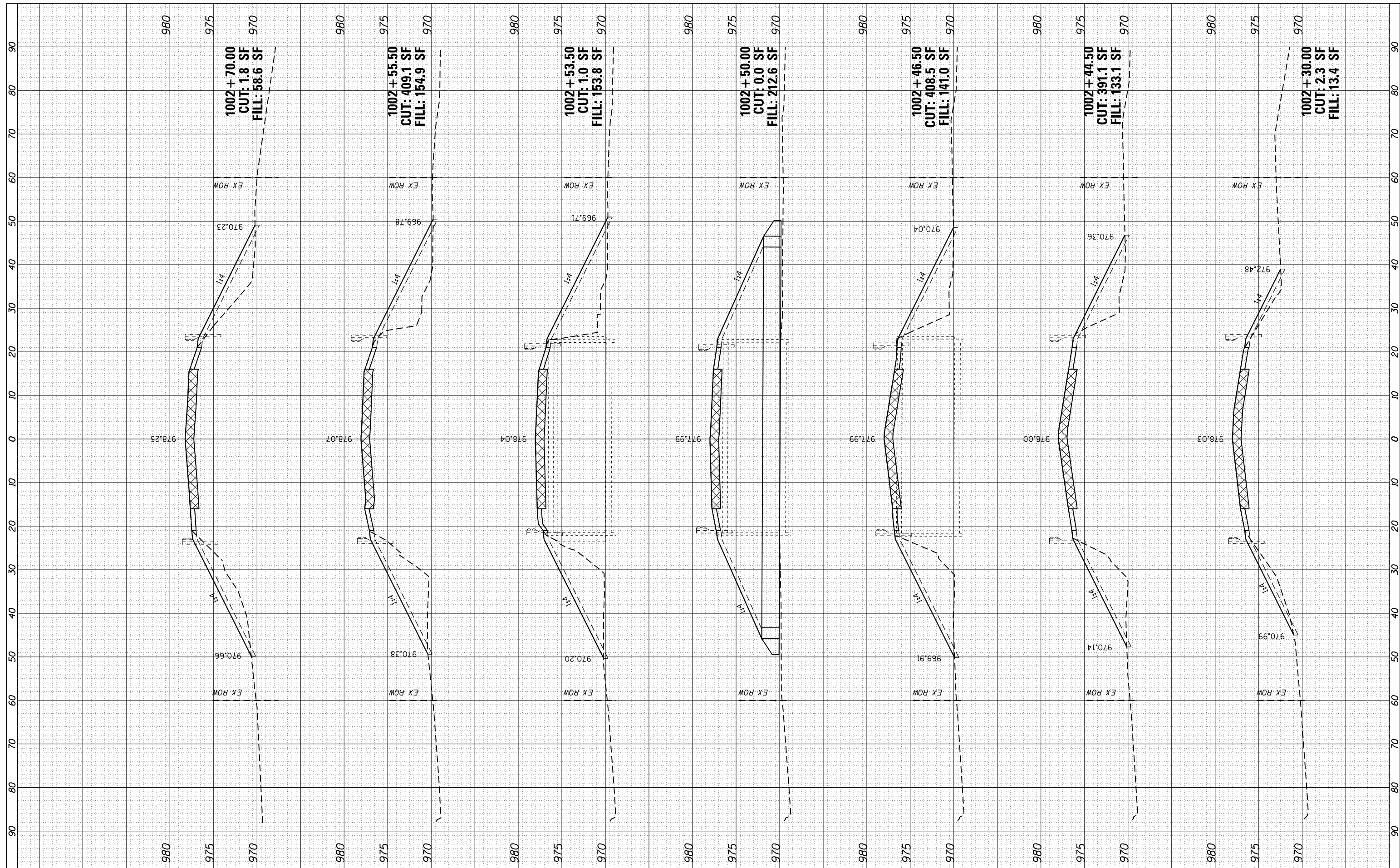
**STATE OF ILLINOIS
DEPARTMENT OF TRANSPORTATION**

DETOUR SIGNING FOR CLOSING STATE HIGHWAYS			
SCALE: NONE	SHEET NO. 1 OF 1 SHEETS	STA.	TO STA.

F.A.P. RTE.	SECTION	COUNTY	TOTAL SHEETS	SHEET NO.
305	2015-009I	McHENRY	19	17
TC-21		CONTRACT NO. 62A63		
FED. ROAD DIST. NO. 1 ILLINOIS FED. AID PROJECT				

FINAL SURVEY NO.	SURVEYED PLOTTED TEMPLATE AREAS CHECKED	BY	DATE

ORIGINAL SURVEY NO.	SURVEYED PLOTTED TEMPLATE AREAS CHECKED	BY	DATE



USER NAME	= juanS
DESIGNED	- DPA
DRAWN	- JPS
CHECKED	- TWB
DATE	- 11/30/15
PLOT SCALE	= 20.0000' / in.
PLOT DATE	= 1/21/2016

REVISED	-
REVISED	-
REVISED	-
REVISED	-

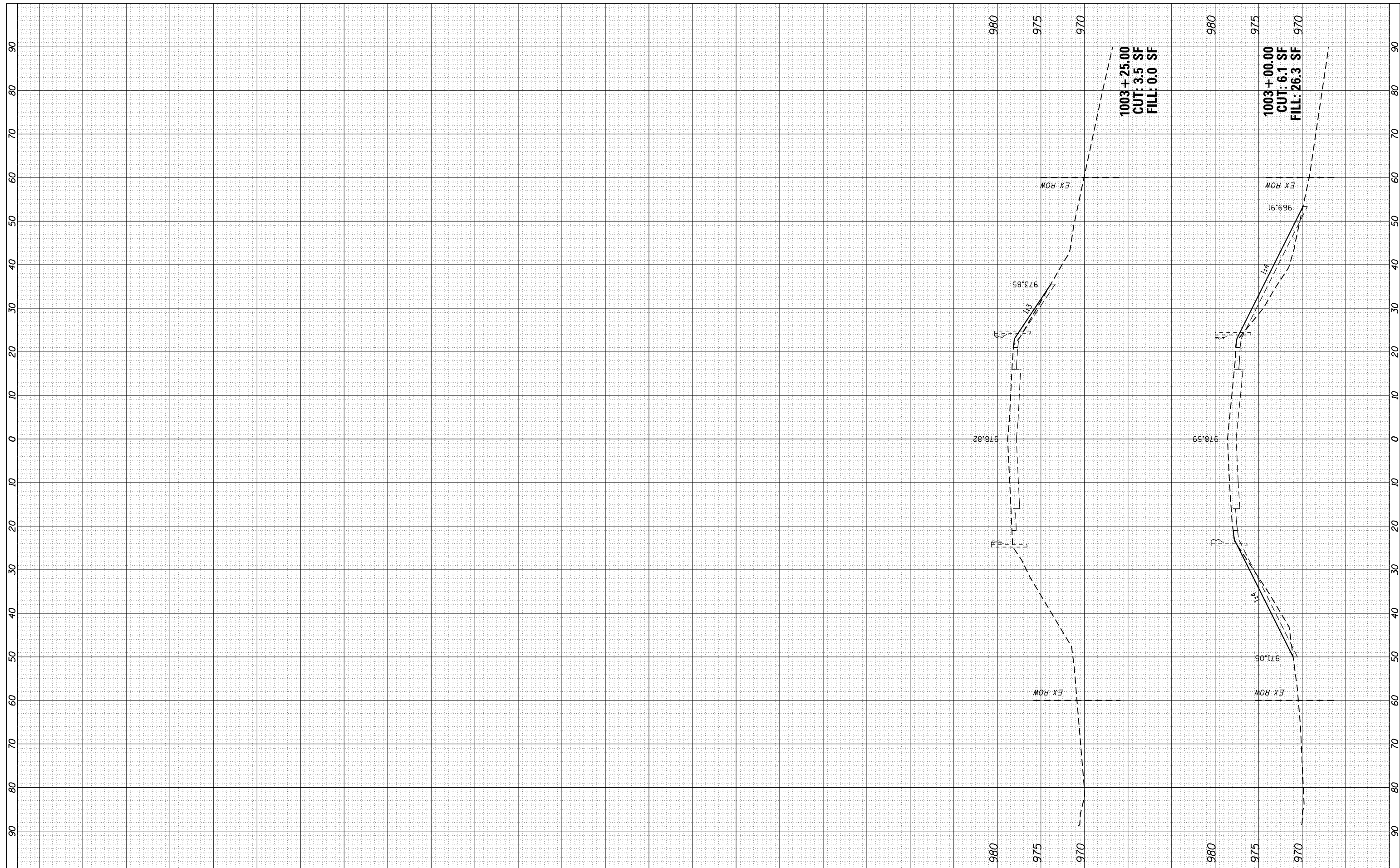
**STATE OF ILLINOIS
DEPARTMENT OF TRANSPORTATION**

US 14 OVER DITCH CULVERT REMOVAL CROSS SECTIONS	
SCALE: 1"=10'	SHEET 1 OF 2 SHEETS
STA. 1002+30.00 TO STA. 1002+70.00	

F.A.P. RTE. 305	SECTION 2015-009I	COUNTY McHENRY	TOTAL SHEETS 19	SHEET NO. 18
			CONTRACT NO. 62A63	
ILLINOIS FED. AID PROJECT				

FINAL SURVEY NO.	SURVEYED PLOTTED TEMPLATE AREAS CHECKED	BY	DATE

ORIGINAL SURVEY NO.	SURVEYED PLOTTED TEMPLATE AREAS CHECKED	BY	DATE



USER NAME = juanS	DESIGNED - DPA	REVISED -
PLOT SCALE = 20.0000' / in.	DRAWN - JPS	REVISED -
PLOT DATE = 1/21/2016	CHECKED - TWB	REVISED -
	DATE - 11/30/15	REVISED -

STATE OF ILLINOIS
DEPARTMENT OF TRANSPORTATION

US 14 OVER DITCH CULVERT REMOVAL	
CROSS SECTIONS	
SCALE: 1"=10'	SHEET 2 OF 2 SHEETS
STA. 1003+00.00 TO STA. 1003+25.00	

F.A.P. RTE. 305	SECTION 2015-009I	COUNTY McHENRY	TOTAL SHEETS 19	SHEET NO. 19
			CONTRACT NO. 62A63	
ILLINOIS FED. AID PROJECT				