

1. COVER SHEET
2. JOB SPECIFIC NOTES & COMMITMENTS
3. SUMMARY OF QUANTITIES
4. LINE DIAGRAM
5. TYPICAL SECTION
6. SCHEDULE OF QUANTITIES
- 7-8. TYPICAL PAVEMENT MARKINGS STANDARD 780001-D4

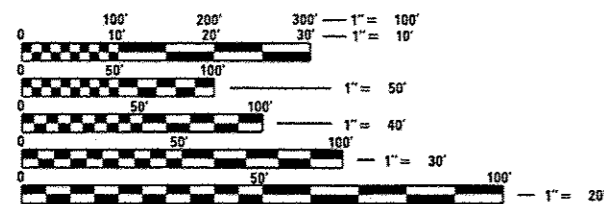
STATE OF ILLINOIS
DEPARTMENT OF TRANSPORTATION
DIVISION OF HIGHWAYS
PROPOSED
HIGHWAY PLANS

F.A.S. ROUTE 380 (IL 8)
SECTION (44,45)RS-3; 46RS-4

PAVEMENT PRESERVATION
KNOX COUNTY
C-94-102-15

HIGHWAY STANDARDS

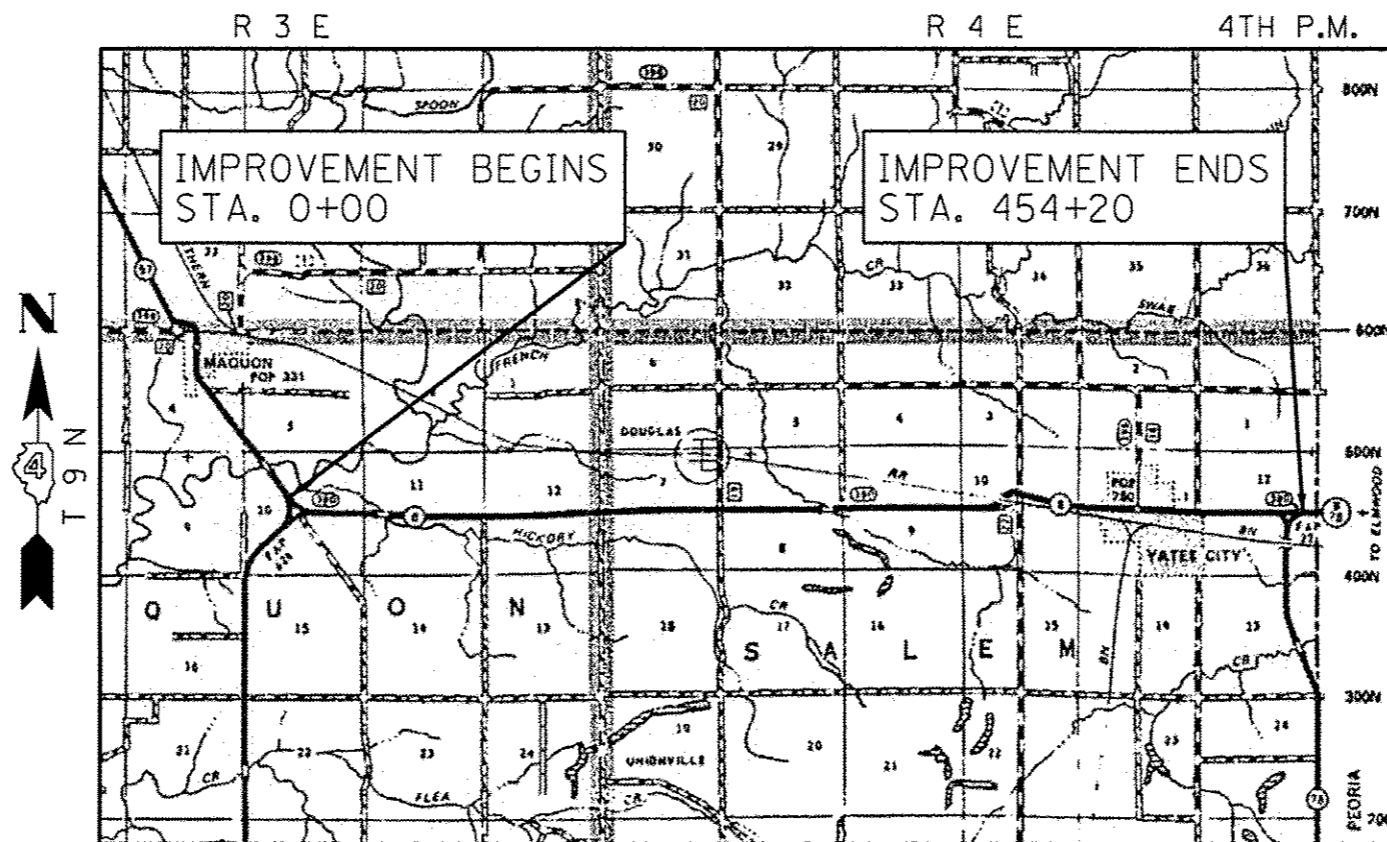
- 701301-4
- 701306-3
- 701311-3
- 701901-5



FULL SIZE PLANS HAVE BEEN PREPARED USING STANDARD ENGINEERING SCALES. REDUCED SIZED PLANS WILL NOT CONFORM TO STANDARD SCALES. IN MAKING MEASUREMENTS ON REDUCED PLANS, THE ABOVE SCALES MAY BE USED.

J.U.L.I.E.
JOINT UTILITY LOCATION INFORMATION FOR EXCAVATION
1-800-892-0123
OR 811

PROJECT ENGINEER CHRIS MAUSHARD 309-671-3453
PROJECT MANAGER RAYMOND SAMARA/SOBHI LABABIDI 309-671-3460
CATALOG NO. 035316-00D
CONTRACT NO. 68C80

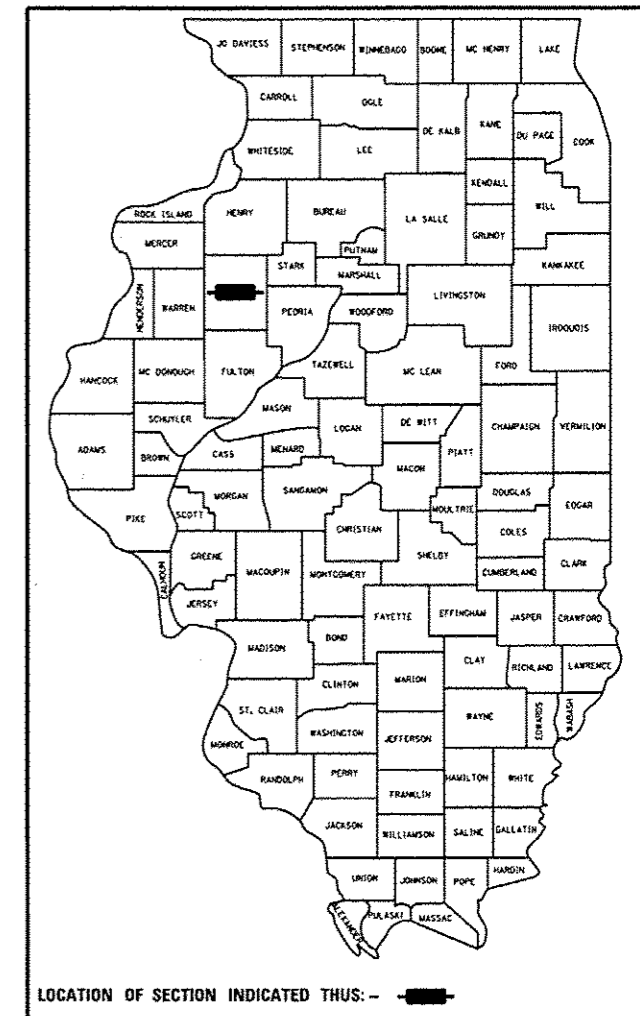


MAP SCALE : = 1 MILE

GROSS LENGTH = 45420 FT. = 8.6 MILE
NET LENGTH = 45210 FT. = 8.56 MILE

F.A.S. RTE.	SECTION	COUNTY	TOTAL SHEETS	SHEET NO.
380	(44,45)RS-3;46RS-4	KNOX	8	1
FED. ROAD DIST. NO.	ILLINOIS	CONTRACT NO. 68C80		

D-94-062-15



DESCRIPTION:
CAPE SEAL ON IL 8 FROM IL97 TO IL78
IN KNOX COUNTY

STATE OF ILLINOIS
DEPARTMENT OF TRANSPORTATION
DIVISION OF HIGHWAYS

SUBMITTED February 4, 2016

James C. James
DEPUTY DIRECTOR OF HIGHWAYS, REGION ENGINEER

Maureen M. Addis, P.E.
ENGINEER OF DESIGN AND ENVIRONMENT

Aliou Osman, P.E.
DIRECTOR OF HIGHWAYS, CHIEF ENGINEER

PRINTED BY THE AUTHORITY
OF THE STATE OF ILLINOIS

NO PASSING ZONE VERIFICATION

THE RESIDENT SHALL CONTACT OPERATIONS TO VERIFY THE LOCATION OF NO PASSING ZONES PRIOR TO PLACEMENT OF CENTERLINE STRIPING.

SURFACE TESTS APPLICATION

SMOOTHNESS TESTS ON THE COMPLETED SURFACE WILL NOT BE REQUIRED; BUT THE ENGINEER RESERVES THE RIGHT TO REQUIRE CORRECTIVE MEASURES WHEN OBVIOUS SURFACE VARIATIONS ARE PRESENT.

CAPE SEAL TREATMENT

THE MATERIALS FOR THE A-1 SURFACE SHALL BE (CRUSHED) CA 20. (CRUSHED) CA 16 MAY BE USED IF APPROVED BY THE ENGINEER.

THE MICRO-SURFACING APPLICATION SHALL BE SINGLE PASS, TYPE II, 24 LB./SQ. YD.

THE AGGREGATE FOR THE MICROSURFACING SHALL MEET THE FRICTION AGGREGATE REQUIREMENTS FOR THE MIXTURE C IN ARTICLE 1004.03 (d)

EXISTING PAVEMENT MARKINGS

THE EXISTING PAVEMENT MARKINGS AND RAISED REFLECTIVE PAVEMENT MARKERS SHALL BE REMOVED PRIOR TO THE CAPE SEAL APPLICATION, THE HOLE RESULTING FROM THE REMOVAL SHALL BE FILLED WITH COLD MIXED MATERIAL (UPM). THIS WORK SHALL BE INCLUDED IN THE COST OF THE "RAISED REFLECTIVE PAVEMENT MARKER REMOVAL"

STATIONING

THE EXISTING ROADWAY STATIONS SHALL BE COVERED PRIOR TO THE CAPE SEAL APPLICATIONS.

THE COVER SHALL BE REMOVED AFTER WORK IS COMPLETED. THIS WORK SHALL BE INCLUDED IN THE COST OF THE "CAPE SEAL".

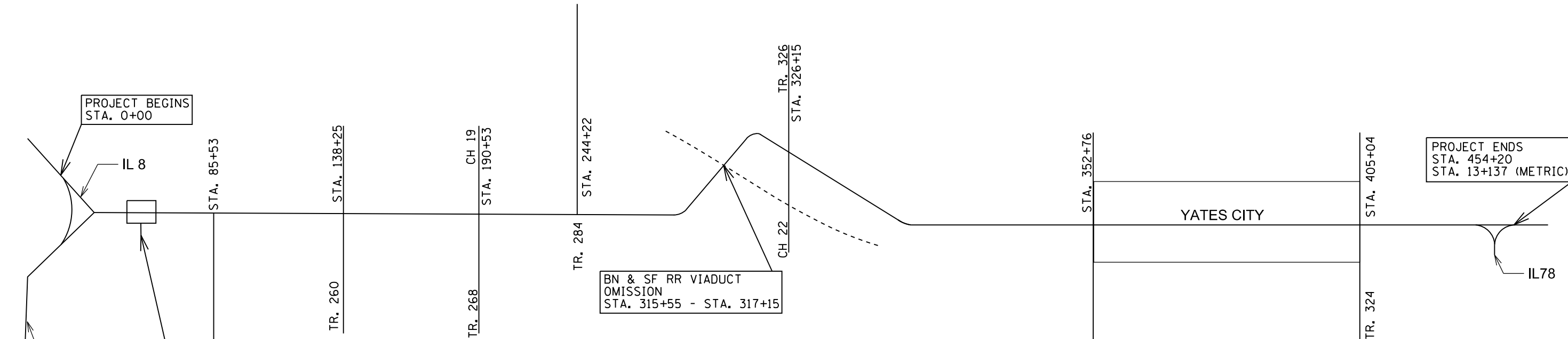
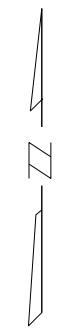
COMMITMENTS:

NO COMMITMENTS HAVE BEEN MADE FOR THIS PROJECT.

FILE NAME : D46BC80-CADD.dgn	USER NAME : k011hbr	DESIGNED -	REVISED -	STATE OF ILLINOIS DEPARTMENT OF TRANSPORTATION	JOB SPECIFIC NOTES & COMMITMENTS	F.A.S. RTE.	SECTION	COUNTY	TOTAL SHEETS	SHEET NO.
	PLOT SCALE : 647.0568 / in.	DRAWN -	REVISED -			380	144,451RS-3; 46RS-4	KNOX	8	2
Default	PLOT DATE : 2/4/2016	CHECKED -	REVISED -	SCALE:	SHEET 1 OF 1 SHEETS	STA.	TO STA.	ILLINOIS STATE AID PROJECT CONTRACT NO. 68C80		

CODE NO.	ITEM	UNIT	TOTAL QUANTITY	CONST. CODE
				RURAL
				100% STATE 0005
67100100	MOBILIZATION	L SUM	1	1
70100460	TRAFFIC CONTROL AND PROTECTION, STANDARD 701306	L SUM	1	1
70300100	SHORT-TERM PAVEMENT MARKING	FOOT	4521	4521
70300220	TEMPORARY PAVEMENT MARKING - LINE 4"	FOOT	135385	135385
70301000	WRK ZONE PAVEMENT MARKING REMOVAL	SO FT	1507	1507
* 78009004	MODIFIED URETHANE PAVEMENT MARKING - LINE 4"	FOOT	135385	135385
* 78100100	RAISED REFLECTIVE PAVEMENT MARKER	EACH	565	565
78300200	RAISED REFLECTIVE PAVEMENT MARKER REMOVAL	EACH	360	360
X0326219	BUMP REMOVAL	EACH	35	35
X7810400	TEMPORARY RAISED PAVEMENT MARKER	EACH	2261	2261
Z0064265	CAPE SEAL	SO YD	130607	130607

* SPECIALTY ITEM



BRIDGE OMISSION
SN. 048-0017
STA. 40+23 - STA. 40+73

PROJECT BEGINS
STA. 0+00

PROJECT ENDS
STA. 454+20
STA. 13+137 (METRIC)

BN & SF RR VIADUCT
OMISSION
STA. 315+55 - STA. 317+15

FILE NAME = D468C80-CADD.dgn	USER NAME = keithbr	DESIGNED -	REVISED -
		DRAWN -	REVISED -
	PLOT SCALE = 647.0588' / in.	CHECKED -	REVISED -
	PLOT DATE = 2/4/2016	DATE -	REVISED -

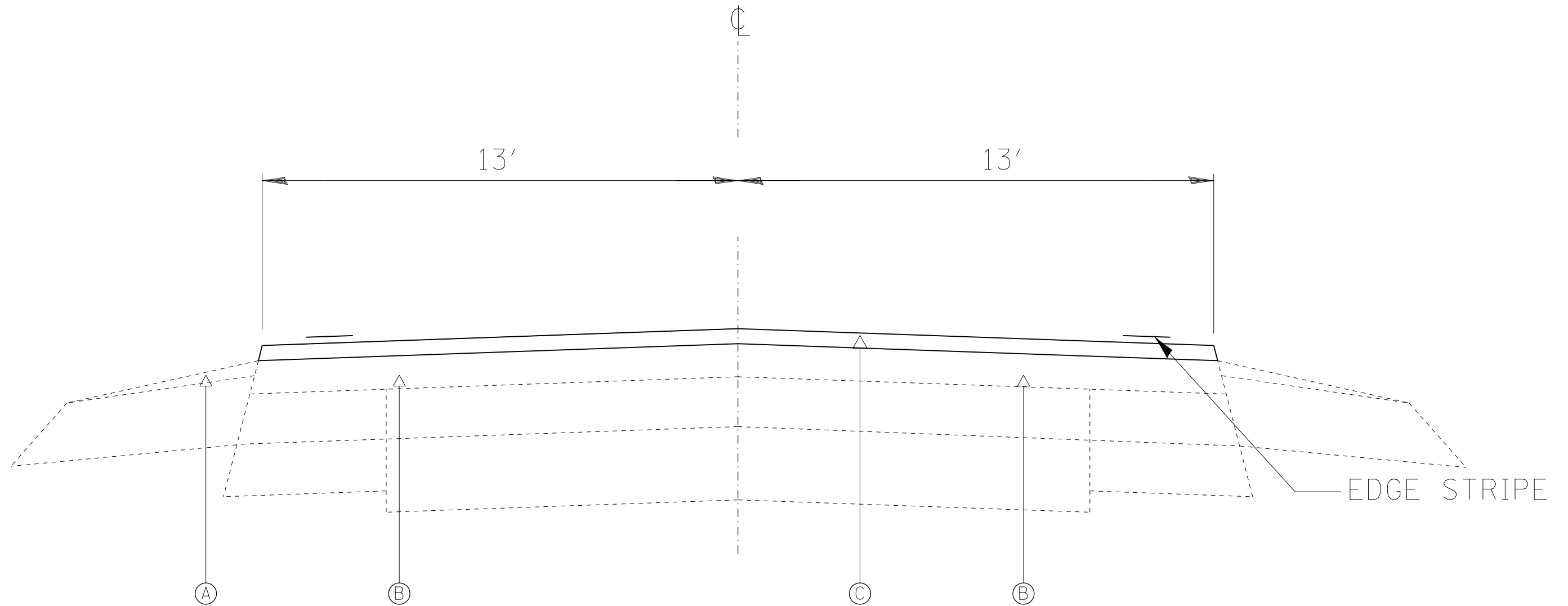
**STATE OF ILLINOIS
DEPARTMENT OF TRANSPORTATION**

LINE DIAGRAM			
SCALE:	SHEET	OF	SHEETS
	STA.	TO	STA.

F.A.S. RTE.	SECTION	COUNTY	TOTAL SHEETS	SHEET NO.
380	(44,45)RS-3; 46RS-4	KNOX	8	4
CONTRACT NO. 68C80				
ILLINOIS FED. AID PROJECT				

LEGEND

- Ⓐ EXISTING AGGREGATE SHOULDER
- Ⓑ EXISTING PAVEMENT & OVERLAY
- Ⓒ PROPOSED CAPE SEAL



STA 0+00 TO STA 454+20

FILE NAME = D468C80-CADD.dgn	USER NAME = keithbr	DESIGNED -	REVISED -	STATE OF ILLINOIS DEPARTMENT OF TRANSPORTATION	TYPICAL SECTION			F.A.S. RTE.	SECTION	COUNTY	TOTAL SHEETS	SHEET NO.
	PLOT SCALE = 647.0588' / in.	CHECKED -	REVISED -					380	(44,45)RS-3; 46RS-4	KNOX	8	5
Default	PLOT DATE = 2/4/2016	DATE -	REVISED -		SCALE: SHEET 1 OF 1 SHEETS STA. TO STA.			CONTRACT NO. 68C80				
							ILLINOIS STATE AID PROJECT					

MODIFIED URITHANE PAVEMENT MARKING - LINE 4"/ TEMPORARY PAVEMENT MARKING - LINE 4"							
LOCATION			LT EDGE	LT NP	CL	RT NP	RT EDGE
			SOLID WHITE	SOLID YELLOW	SKIP DASH	SOLID YELLOW	SOLID WHITE
STA.	TO	STA.	FT	FT	FT	FT	FT
0+00	-	64+36	6436		1609		6436
64+36	-	73+81	945		236	945	945
73+81	-	83+89	1008	1008	252		1008
83+89	-	85+85	196	196		196	196
85+85	-	91+87	601	601	159		601
91+87	-	94+03	216		58		216
94+03	-	100+42	639	639	159		639
100+42	-	102+48	206	206		206	206
102+48	-	110+29	781		195	781	781
110+29	-	122+39	1210	1210		1210	1210
122+39	-	133+10	1071	1071	267		1071
133+10	-	142+82	972	972		972	972
142+82	-	150+95	813	813	203		813
150+95	-	151+58	63	63		63	63
151+58	-	160+56	898		224	898	898
160+56	-	170+80	1024	1024		1024	1024
170+80	-	178+93	813		203		813
178+93	-	180+57	164	164		164	164
180+57	-	187+91	734		183	734	734
187+91	-	193+51	560	560		560	560
193+51	-	204+86	1135		283	1135	1135
204+86	-	213+83	897	897	224		897
213+83	-	250+85	3702		925		3702
250+85	-	259+40	855		213	855	855
259+40	-	266+85	745	745	186		745
266+85	-	268+89	204		52		204
268+89	-	272+60	371		91	371	371
272+60	-	276+40	380		95		380
276+40	-	279+99	359	359	89		359
279+99	-	281+47	148	148		148	148
281+47	-	287+76	629		157	629	629
287+76	-	289+29	153		38		153
289+29	-	297+21	792	792	198		792
297+21	-	299+79	258		64		258
299+79	-	309+93	1014		253	1014	1014
309+93	-	325+24	1531	1531		1531	1531
325+24	-	333+80	856	856	213		856
333+80	-	396+89	6309		1577		6309
396+89	-	404+55	766		191	766	766
404+55	-	406+71	216	216		216	216
406+71	-	416+16	945	945	236		945
416+16	-	422+98	682		170	682	682
422+98	-	425+77	279	279		279	279
425+77	-	436+65	1088	1088	272		1088
436+65	-	454+20	1755	1755		1755	1755
TOTAL			45419	18138	9275	17134	45419

SHORT TERM PAVEMENT MARKING				
STA.	TO	STA.	LENGTH*	
			FT	
0+00	-	454+20	4521	
TOTAL			4521	

WORK ZONE PAVEMENT MARKING REMOVAL				
STA.	TO	STA.	LENGTH*	AREA
			FT	SQFT
0+00	-	454+20	4521	1507
TOTAL				1507

TEMPORARY RAISED PAVEMENT MARKER				
STA.	TO	STA.	LENGTH*	EACH
			FT	
0+00	-	454+20	45210	2261
TOTAL				2261

RAISED REFLECTIVE PAVEMENT MARKER				
STA.	TO	STA.	LENGTH*	EACH
			FT	
0+00	-	454+20	45210	565
TOTAL				565

RAISED REFLECTIVE PAVEMENT MARKER REMOVAL				
STA.	TO	STA.	LENGTH*	EACH
			FT	
0+00	-	454+20	45210	360
TOTAL				360

CAPE SEAL					
STA.	TO	STA.	LENGTH*	WIDTH	AREA
			FT	FT	SQYD
0+00	-	454+20	45210	26	130607
TOTAL					130607

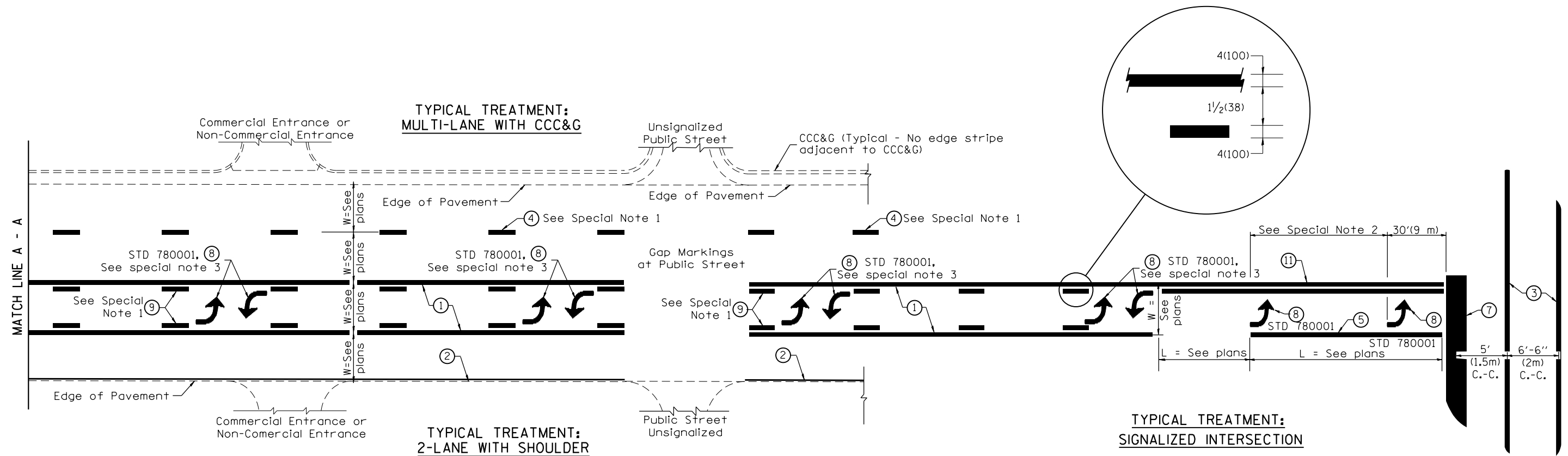
* NET LENGTH 45210 FT, SEE OMISSIONS SHEET 4

MOBILIZATION	
LOCATION	L. SUM
JOBSITE	1
TOTAL	1

BUMP REMOVAL	
LOCATION	EACH
JOBSITE	35
TOTAL	35

TRAFFIC CONTROL AND PROTECTION, STANDARD 701306	
LOCATION	L. SUM
JOBSITE	1
TOTAL	1

DESIGNER NOTES:
1. Include State Standard 780001 (Typical Pavement Markings)



FLUSH PAVED MEDIAN: TWO-WAY LEFT TURN LANE WITH ONE-WAY LEFT TURN LANE AT SIGNALIZED INTERSECTION

TYPICAL PAVEMENT MARKING LEGEND

(Note: This is a District Standard Legend. Some elements may not apply to specific project.)

- ① 4(100) Solid (Yellow)
- ② 4(100) Solid (White)
- ③ 2-6(150) Crosswalk @ 6'-6" (2m)min C.-C. (White)
2-8(200) Crosswalk @ 6'-6" (2m)min C.-C. (White) (When traffic signals are present.)
- ④ 6(150) Skip-Dash (White) (See Special Note 1)
- ⑤ 8(200) Solid (White)
- ⑥ 12(300) Diagonal (White) (Item ⑥ is shown on Std. 780001)
- ⑦ 24(600) Stop Bar (White)
- ⑧ Letters & Arrows (See Std. 780001 and Special Notes 2 & 3)
- ⑨ 4(100) Skip-Dash (Yellow) (See Special Note 1)
- ⑩ 12(300) Diagonal (Yellow) (See Table A) (See Table A)
- ⑪ 4(100) Double Solid (Yellow) (See Table A)

SPECIAL NOTES

1. Skip-Dash markings will be centered between both ends of city blocks and shall be placed in alignment transversely across the pavement.
2. The following shall apply to arrows located in one-way left turn lanes:
 - A. A minimum of two (2) arrows is required.
 - B. The maximum spacing between arrows is 80' (24 m).
 - C. Arrows shall be evenly spaced if three (3) or more are required.
3. The following shall apply to arrow pairs located in two-way left turn lanes:
 - A. A minimum of two (2) arrow pairs is required.
 - B. The maximum spacing between arrow pairs is 200' (61 m).
 - C. Arrow pairs shall be evenly spaced if three (3) or more are required.
 - D. The spacing between Bi Directional Left Turn Arrows is 33' (10 m).

GENERAL NOTES

1. Refer to State Standard 780001 for additional Pavement Markings including letters & arrows.
2. See Plans for Pavement Markings adjacent to curbed islands and medians, and through lane reductions.

01-01-97	RENUM. F-8.03, NEW REVISION BOX	T.P.	10-16-06	REVISED TO 2007 SPEC.
02-07-97	ADD BI DIRECTIONAL DIMENSION	J.A.		
10-97	CORRECT BI DIRECTIONAL DIMENSION	J.A.		
08-02	ADD CROSSWALK DMNS. WITH T.S.	M.A.		

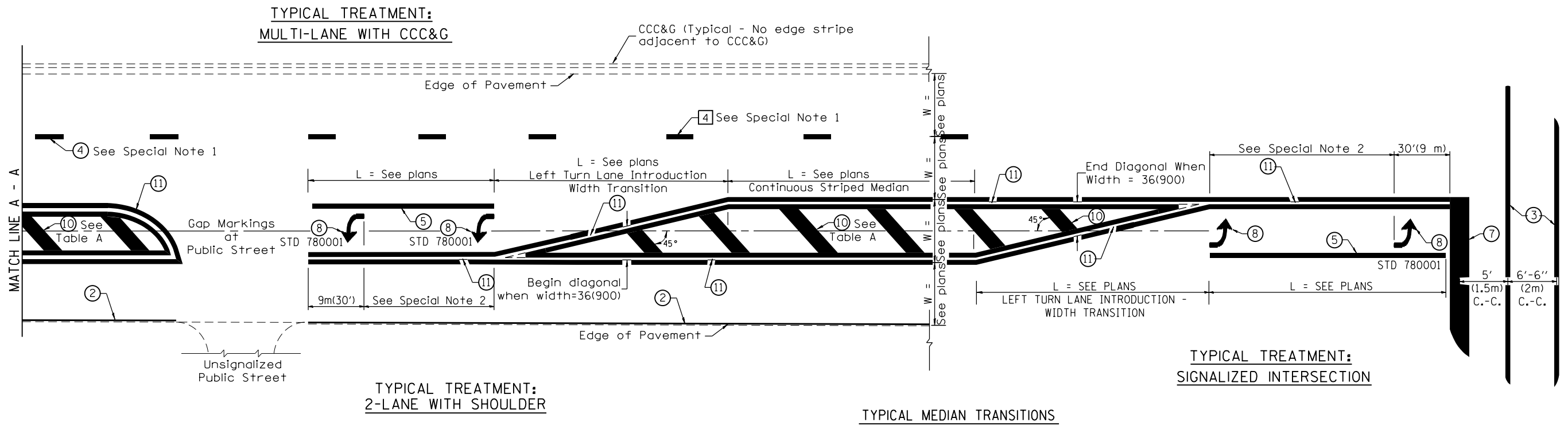
**STATE OF ILLINOIS
DEPARTMENT OF TRANSPORTATION**

NOT TO SCALE

TYPICAL PAVEMENT MARKINGS

SHT. 1 OF 2
CADD STD. 780001-D4

F.A.S. RTE.	SECTION	COUNTY	TOTAL SHEETS	SHEET NO.
380	(44,45)RS-3; 46RS-4	KNOX	8	7
CONTRACT NO. 68C80				
FED. ROAD DIST. NO. ILLINOIS FED. AID PROJECT				

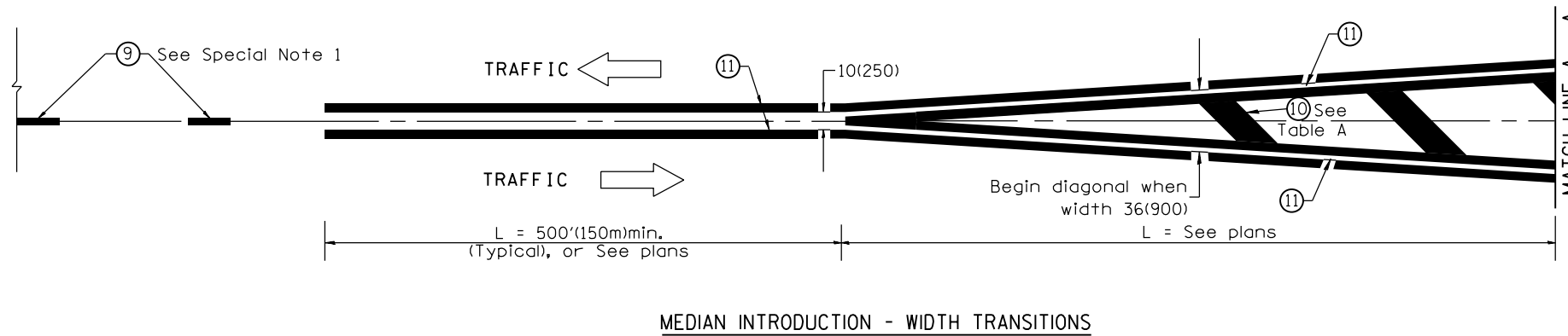


FLUSH PAVED MEDIAN: RESTRICTED LEFT TURN LANE

TABLE A

RECOMMENDED SPACING BETWEEN DIAGONAL LINES

SPEED LIMIT RANGE	INTERSECTION CHANNELIZATION (Includes Width Transitions for Median and Left Turn Lane Introductions)	
	CONTINUOUS	
Less Than 30 mph (50 km/h)	50' (15m)	15' (5m)
30 - 45 mph (50 - 70 km/h)	75' (23m)	20' (6m)
Over 45 mph (70 km/h)	150' (46m)	30' (9m)



All dimensions are in inches (millimeters) unless otherwise noted.