

STATE OF ILLINOIS
DEPARTMENT OF TRANSPORTATION
DIVISION OF HIGHWAYS

F.A.P. RTE.	SECTION	COUNTY	TOTAL SHEETS	SHEET NO.
730	D5 CM PATCHING 2016-2	McLean	6	1
		ILLINOIS	CONTRACT NO. 70B60	

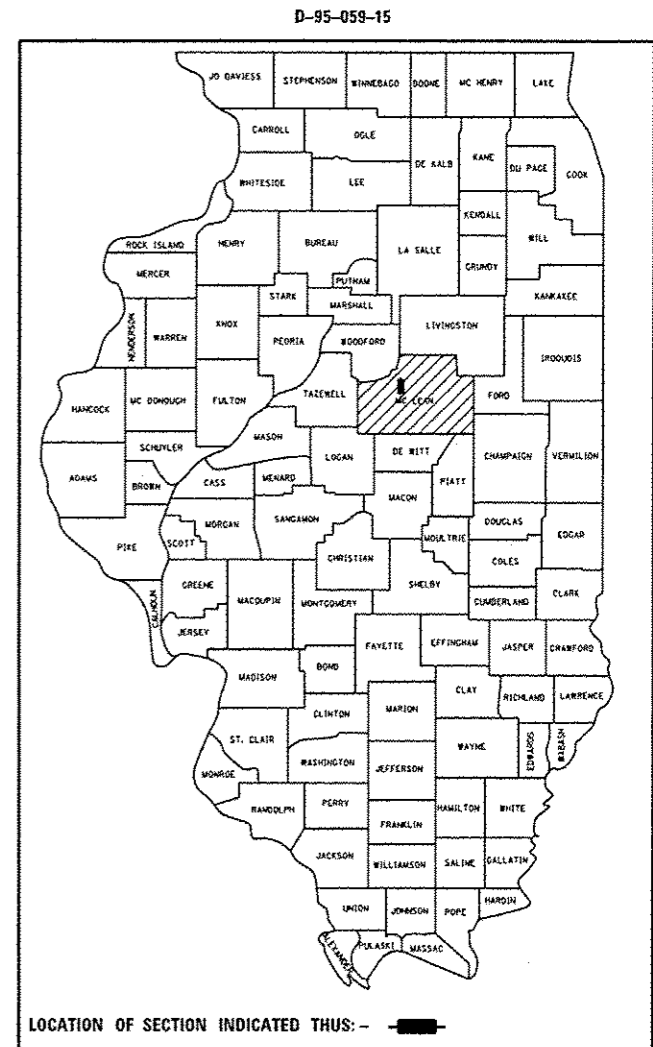
FOR INDEX OF SHEETS, SEE SHEET NO. 2
FOR DETAILED LOCATION MAP, SEE SHEET NO. 3
FOR SUMMARY OF QUANTITIES, SEE SHEET NO. 4

PROPOSED HIGHWAY PLANS

FAP ROUTE 730 / (US BUS. 51)
SECTION: D5 CM PATCHING 2016-2

PATCHING
MCLEAN COUNTY

C-95-059-15



CURRENT TRAFFIC DATA

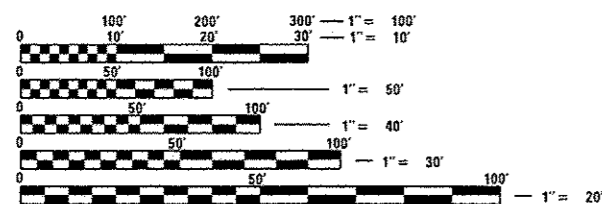
FAP 730 / US BUS. 51

	LEG "A"	LEG "B"
2014 ADT =	13,200	7,100
PV =	11,900	6,075
SU =	800	500
MU =	500	525

LEG "A" = RAAB RD. TO FAI-55
LEG "B" = FAI-55 TO NORTHTOWN RD.

DESIGN DESIGNATION

OTHER PRINCIPLE ARTERIAL



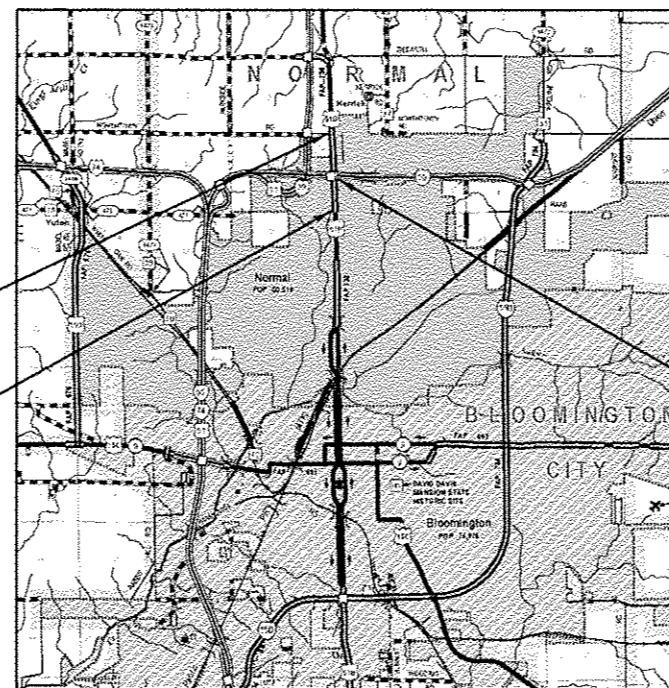
FULL SIZE PLANS HAVE BEEN PREPARED USING STANDARD ENGINEERING SCALES. REDUCED SIZED PLANS WILL NOT CONFORM TO STANDARD SCALES. IN MAKING MEASUREMENTS ON REDUCED PLANS, THE ABOVE SCALES MAY BE USED.

J.U.L.I.E.
JOINT UTILITY LOCATION INFORMATION FOR EXCAVATION
1-800-892-0123
OR 811

TOWNSHIP: NORMAL

PROJECT ENGINEER: JASON STULTS
SQUAD LEADER: GREG EAGLIN
DESIGNER: MATTHEW MURPHY
PHONE: 217-465-4181
CONTRACT NO. 70B60

I-39 TO RAAB ROAD NORTH OF NORMAL



SECTION D5 CM PATCHING 2016-2
ENDS: STA. 95+00.00

SECTION D5 CM PATCHING 2016-2
BEGINS: STA. 23+00.00

SEE SHEET NO. 3 FOR
DETAILED LOCATION MAP

T24N

STA. 50+98.71
S.N. 057-0024 I-55 NB
S.N. 057-0025 I-55 SB

R2E

SCALE



GROSS LENGTH = 7,200.00 FT. = 1.364 MILE
NET LENGTH = 7,200.00 FT. = 1.364 MILE

STATE OF ILLINOIS
DEPARTMENT OF TRANSPORTATION
DIVISION OF HIGHWAYS

SUBMITTED *January 22, 2016*

Tom C. [Signature]
DEPUTY DIRECTOR OF HIGHWAYS, REGION ENGINEER

Maureen M. Addis, P.E.
ENGINEER OF DESIGN AND ENVIRONMENT

March 10, 2016

Omer Osman, P.E.
DIRECTOR OF HIGHWAYS, CHIEF ENGINEER

PRINTED BY THE AUTHORITY
OF THE STATE OF ILLINOIS

INDEX OF SHEETS

SHEET NO.	DESCRIPTION
1	COVER SHEET
2	INDEX OF SHEETS
2	LIST OF STANDARDS
2	GENERAL NOTES
3	DETAILED LOCATION MAP
4	SUMMARY OF QUANTITIES
5	EXISTING TYPICAL CROSS SECTIONS
6	SCHEDULE OF QUANTITIES

LIST OF STANDARDS

STANDARD NO.	NAME OF STANDARD
000001-06	STANDARD SYMBOLS, ABBREVIATIONS AND PATTERNS
001001-02	AREAS OF REINFORCEMENT BARS
001006	DECIMAL OF AN INCH AND OF A FOOT
420001-08	PAVEMENT JOINTS
420701-03	PAVEMENT WELDED WIRE REINFORCEMENT
442101-07	CLASS B PATCHES
701411-09	LANE CLOSURE, MULTILANE, AT ENTRANCE OR EXIT RAMP, FOR SPEEDS ≥ 45 MPH
701426-08	LANE CLOSURE, MULTILANE, INTERMITTENT OR MOVING OPER., FOR SPEEDS ≥ 45 MPH
701601-09	URBAN LANE CLOSURE, MULTILANE, 1W OR 2W WITH NONTRAVERSABLE MEDIAN
701602-07	URBAN LANE CLOSURE, MULTILANE, 2W WITH BIDIRECTIONAL LEFT TURN LANE
701701-10	URBAN LANE CLOSURE, MULTILANE INTERSECTION
701901-05	TRAFFIC CONTROL DEVICES

GENERAL NOTES

G.N.-100
ENGLISH UNITS OF MEASUREMENT SHALL GOVERN OVER AND SUPERSEDE ANY METRIC UNITS SHOWN IN THIS CONTRACT. WHERE INCLUDED, METRIC UNITS ARE FOR INFORMATION ONLY.

G.N.-100A
ELECTRONIC FILES AND / OR ELECTRONIC SURVEY INFORMATION INCLUDING CADD FILES WILL NOT BE AVAILABLE TO THE CONTRACTOR.

G.N.- 442B - PATCHING SCHEDULES
THE PATCHING SCHEDULES INCLUDED IN THE PLANS REPRESENT THE BEST INFORMATION AVAILABLE AT THE TIME OF COMPLETION OF THE PLANS FOR LETTING. VARIATIONS IN LOCATION AND SIZES OF BOTH FULL-DEPTH AND PARTIAL-DEPTH PATCHES MAY OCCUR.

G.N.-1004.01
COARSE AGGREGATE GRADATION CA-10 MAY BE USED WHENEVER COARSE AGGREGATE CA-8 IS SPECIFIED IN THE STANDARD SPECIFICATIONS.

COMMITMENTS:

THERE ARE NO COMMITMENTS FOR THIS CONTRACT.

FILE NAME *	USER NAME = Murphy*	DESIGNED - GAE	REVISED -	STATE OF ILLINOIS DEPARTMENT OF TRANSPORTATION	INDEX OF SHEETS / LIST OF STANDARDS GENERAL NOTES	F.A.P. RTE.	SECTION	COUNTY	TOTAL SHEETS	SHEET NO.
pw\1\10846810\INTEG.sit\name.gvp\PI\DOT\0	utants\DOT Offices\District 5\Projects\057	DRAWN Data\Basis\GAE72362-ast-genote.g	REVISED -			730	05 CM PATCHING 2016-2	MCLEAN	6	2
	PLOT SCALE = 48,000' / in.	CHECKED -	REVISED -			CONTRACT NO. 70B60				
MODEL NAME	PLOT DATE = 1/25/2016	DATE -	REVISED -			SCALE:	SHEET 1 OF 1 SHEETS STA. TO STA.	ILLINOIS FED. AID PROJECT		

FAP ROUTE 730 / (US BUS. 51)

FROM RAAB RD. TO NORTHTOWN RD.

MCLEAN COUNTY / URBAN MULTILANE



CURRENT TRAFFIC DATA

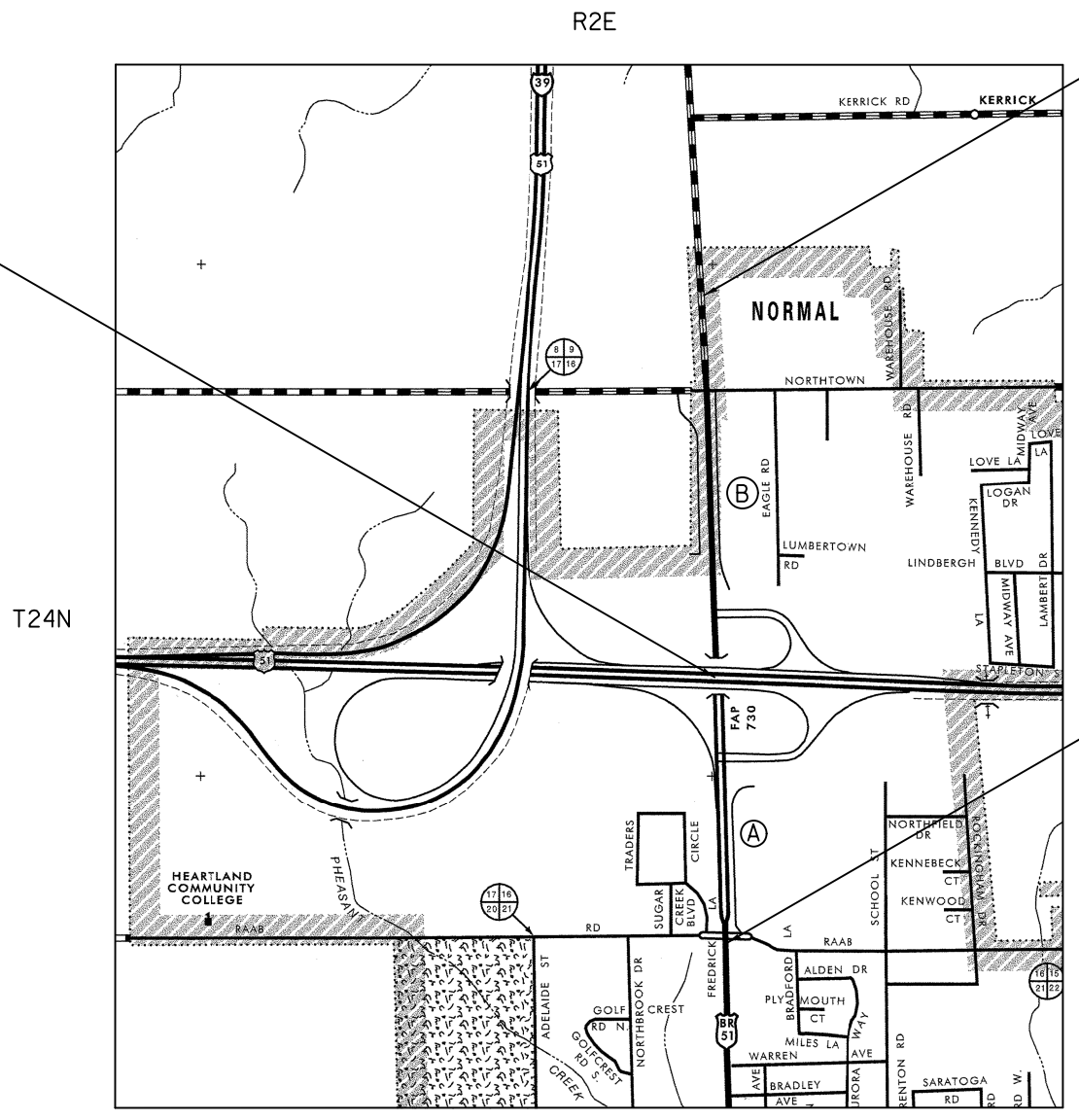
FAP 730 / US BUS. 51

	LEG "A"	LEG "B"
2014 ADT =	13,200	7,100
PV =	11,900	6,075
SU =	800	500
MU =	500	525
LEG "A" =	RAAB RD. TO FAI-55	
LEG "B" =	FAI-55 TO NORTHTOWN RD.	

STA. 50+98.71
S.N. 057-0024 I-55 NB
S.N. 057-0025 I-55 SB

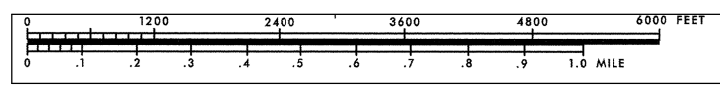
SECTION D5 CM PATCHING 2016-2
ENDS: STA. 95+00.00

SECTION D5 CM PATCHING 2016-2
BEGINS: STA. 23+00.00



TOWNSHIP: NORMAL

SCALE



GROSS LENGTH OF PROJECT = 7,200.00 FT = 1.364 MILES
NET LENGTH OF PROJECT = 7,200.00 FT = 1.364 MILES

FILE NAME =	USER NAME = Murphy	DESIGNED - GAE	REVISED -	STATE OF ILLINOIS DEPARTMENT OF TRANSPORTATION	DETAILED LOCATION MAP			F.A.P. RTE.	SECTION	COUNTY	TOTAL SHEETS	SHEET NO.
pw:\IL\084EBIDINTEG.illinois.gov\PIWIDOT\Documents\DOT Offices\District 5\Projects\0572016\Design\GAE\0860-sh-1-locmap.dwg	DRAWN BY = GAE	CHECKED -	REVISED -					730	D5 CM PATCHING 2016-2	MCLEAN	6	3
\$MODELNAME\$	PLOT SCALE = 40.0000' / in.	DATE -	REVISED -		CONTRACT NO. 70B60			ILLINOIS FED. AID PROJECT				
	PLOT DATE = 1/25/2016	DATE -	REVISED -		SCALE:	SHEET 1	OF 1	SHEETS	STA.	TO STA.		

SUMMARY OF QUANTITIES

LOCATION OF WORK: FAP 730
 (US BUS. 51)
 MULTILANE
 URBAN
 COUNTY: MCLEAN
 STA. 23+00.00
 TO
 STA. 95+00.00

FUNDING BREAKOUT: 100% STATE
 CONSTRUCTION TYPE CODE: 0005

CODE NO.	ITEM	UNIT	QUANTITY
44200050	WELDED WIRE REINFORCEMENT	SQ YD	326.0
44200970	CLASS B PATCHES, TYPE II, 10 INCH	SQ YD	368.0
44200974	CLASS B PATCHES, TYPE III, 10 INCH	SQ YD	32.0
44200976	CLASS B PATCHES, TYPE IV, 10 INCH	SQ YD	294.0
44201299	DOWEL BARS, 1-1/2"	EACH	1176.0
44213200	SAW CUTS	FOOT	3558.0
44213204	TIE BARS, 3/4"	EACH	190.0
67100100	MOBILIZATION	L SUM	1.0
70100420	TRAFFIC CONTROL AND PROTECTION, STANDARD 701411	EACH	2.0
70102630	TRAFFIC CONTROL AND PROTECTION, STANDARD 701601	L SUM	1.0
70102632	TRAFFIC CONTROL AND PROTECTION, STANDARD 701602	L SUM	1.0
70102635	TRAFFIC CONTROL AND PROTECTION, STANDARD 701701	L SUM	1.0
70103815	TRAFFIC CONTROL SURVEILLANCE	CAL DA	8.0
X7015005	CHANGEABLE MESSAGE SIGN	CAL DA	12.0

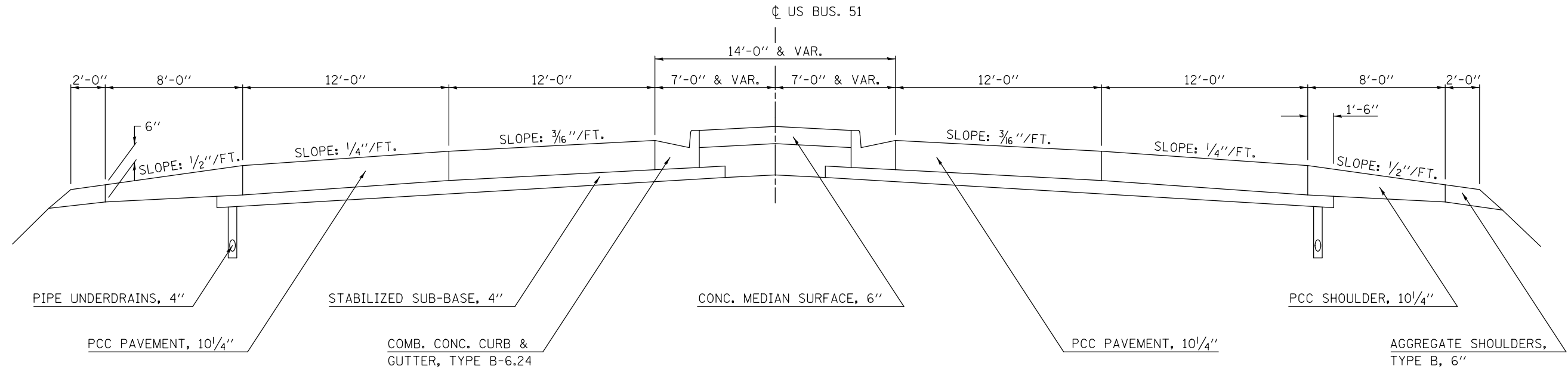
14

• SPECIALTY ITEMS

(A) EXISTING TYPICAL CROSS SECTION

FAP 730 (US BUS. 51)

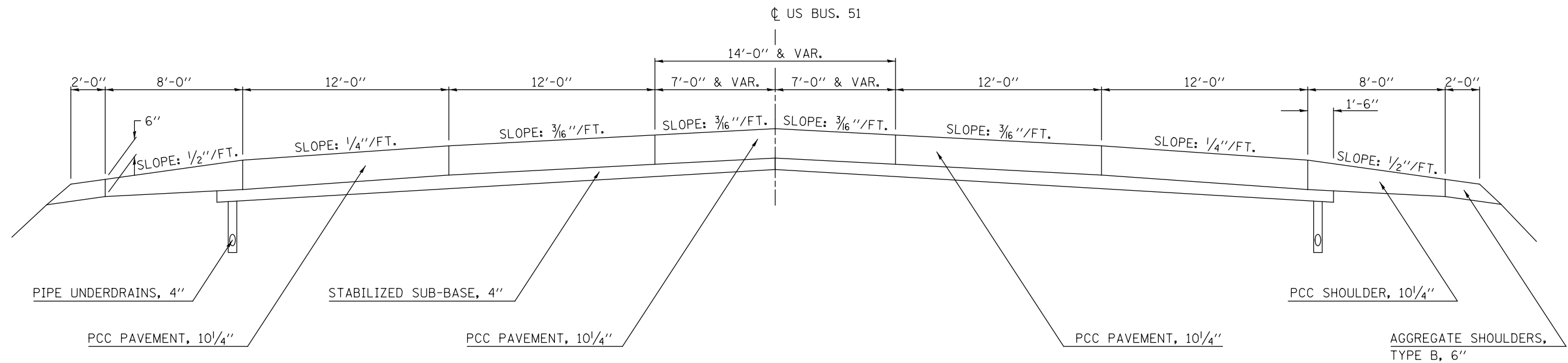
STATION TO STATION
23+00.00 83+81.00 (B)



(B) EXISTING TYPICAL CROSS SECTION

FAP 730 (US BUS. 51)

STATION TO STATION
(A) 83+81.00 95+00.00



FILE NAME =	USER NAME = Murphy	DESIGNED -	REVISED -	STATE OF ILLINOIS DEPARTMENT OF TRANSPORTATION	TYPICAL CROSS SECTIONS			F.A.P. RTE.	SECTION	COUNTY	TOTAL SHEETS	SHEET NO.
p:\11084EBID\INTEG.illinois.gov\PIWIDOT\Documents\IDOT Offices\District 5\Projects\0572\BROWND\Design\05720860-shr-typical.dwg	DESIGNED -	REVISED -	730					D5 CM PATCHING 2016-2	MCLEAN	6	5	
PLOT SCALE = 40.0000' / in.	CHECKED -	REVISED -	CONTRACT NO. 70B60									
MODELNAME	DATE -	REVISED -	SCALE:		SHEET 1	OF 1	SHEETS	STA.	TO STA.	ILLINOIS FED. AID PROJECT		

SCHEDULE OF QUANTITIES

FAP ROUTE 730 / (US BUS. 51)

CLASS B PATCHING SCHEDULE, 10" FAP 730 (US BUS 51)

LOCATION	STATION	LENGTH (FT)	WIDTH (FT)	44200970 TYPE II, 10" (SQ YD)	44200974 TYPE III, 10" (SQ YD)	44200976 TYPE IV, 10" (SQ YD)	44201299 DOWEL BARS, 1 1/2" (EACH)	44213200 SAW CUTS (FT)	44213204 TIE BARS 3/4" (EACH)	44200050 WELDED WIRE REINFORCEMENT (SQ YD)
N.B. P.L.	23+00.00	30.00	12.00			40.00	12.00	108.00	30.00	40.00
N.B. P.L.	24+00.00	30.00	12.00			40.00	12.00	108.00	15.00	40.00
N.B. D.L.	24+00.00	30.00	12.00			40.00	12.00	108.00	15.00	40.00
N.B. R.T.L.	24+50.00	30.00	12.00			40.00	30.00	126.00	30.00	40.00
N.B. P.L.	30+00.00	6.00	12.00	8.00			20.00	54.00		
N.B. D.L.	48+61.00	6.00	12.00	8.00			20.00	54.00		
N.B. P.L.	48+61.00	6.00	12.00	8.00			20.00	54.00		
N.B. D.L.	74+00.00	6.00	12.00	8.00			20.00	54.00		
N.B. D.L.	74+20.00	6.00	12.00	8.00			20.00	54.00		
N.B. P.L.	74+20.00	6.00	12.00	8.00			20.00	54.00		
N.B. D.L.	74+40.00	6.00	12.00	8.00			20.00	54.00		
N.B. P.L.	74+40.00	6.00	12.00	8.00			20.00	54.00		
N.B. D.L.	74+80.00	6.00	12.00	8.00			20.00	54.00		
N.B. P.L.	74+80.00	6.00	12.00	8.00			20.00	54.00		
N.B. D.L.	75+15.00	6.00	12.00	8.00			20.00	54.00		
N.B. P.L.	75+15.00	6.00	12.00	8.00			20.00	54.00		
N.B. D.L.	75+75.00	6.00	12.00	8.00			20.00	54.00		
N.B. D.L.	76+15.00	6.00	12.00	8.00			20.00	54.00		
N.B. D.L.	76+30.00	6.00	12.00	8.00			20.00	54.00		
N.B. D.L.	76+75.00	6.00	12.00	8.00			20.00	54.00		
N.B. D.L.	76+95.00	6.00	12.00	8.00			20.00	54.00		
N.B. D.L.	77+15.00	6.00	12.00	8.00			20.00	54.00		
N.B. P.L.	77+15.00	6.00	12.00	8.00			20.00	54.00		
N.B. D.L.	77+30.00	6.00	12.00	8.00			20.00	54.00		
N.B. P.L.	77+30.00	6.00	12.00	8.00			20.00	54.00		
N.B. D.L.	77+60.00	6.00	12.00	8.00			20.00	54.00		
N.B. D.L.	77+75.00	6.00	12.00	8.00			20.00	54.00		
N.B. D.L.	78+35.00	6.00	12.00	8.00			20.00	54.00		
N.B. D.L.	78+50.00	6.00	12.00	8.00			20.00	54.00		
N.B. D.L.	80+00.00	6.00	12.00	8.00			20.00	54.00		
N.B. D.L.	80+50.00	6.00	12.00	8.00			20.00	54.00		
N.B. D.L.	81+50.00	6.00	12.00	8.00			20.00	54.00		
N.B. P.L.	81+50.00	6.00	12.00	8.00			20.00	54.00		
N.B. D.L.	81+80.00	6.00	12.00	8.00			20.00	54.00		
N.B. P.L.	81+80.00	6.00	12.00	8.00			20.00	54.00		
N.B. D.L.	82+00.00	6.00	12.00	8.00			20.00	54.00		
N.B. P.L.	82+00.00	6.00	12.00	8.00			20.00	54.00		
N.B. D.L.	84+50.00	6.00	12.00	8.00			20.00	54.00		
N.B. P.L.	84+50.00	6.00	12.00	8.00			20.00	54.00		
N.B. D.L.	85+00.00	6.00	12.00	8.00			20.00	54.00		
N.B. D.L.	85+60.00	6.00	12.00	8.00			20.00	54.00		
N.B. D.L.	87+00.00	6.00	12.00	8.00			20.00	54.00		
N.B. D.L.	90+00.00	6.00	12.00	8.00			20.00	54.00		
N.B. D.L.	91+00.00	6.00	12.00	8.00			20.00	54.00		
SUB-TOTAL 1=				320.00 (SQ YD)	0.00 (SQ YD)	160.00 (SQ YD)	866.00 (EACH)	2610.00 (FT)	90.00 (EACH)	160.00 (SQ YD)

CLASS B PATCHING SCHEDULE, 10" (CONTINUED) FAP 730 (US BUS 51)

LOCATION	STATION	LENGTH (FT)	WIDTH (FT)	44200970 TYPE II, 10" (SQ YD)	44200974 TYPE III, 10" (SQ YD)	44200976 TYPE IV, 10" (SQ YD)	44201299 DOWEL BARS, 1 1/2" (EACH)	44213200 SAW CUTS (FT)	44213204 TIE BARS 3/4" (EACH)	44200050 WELDED WIRE REINFORCEMENT (SQ YD)
S.B. D.L.	23+00.00	6.00	12.00	8.00			20.00	54.00		
S.B. P.L.	26+00.00	20.00	12.00			26.70	30.00	96.00	20.00	26.70
S.B. D.L.	26+00.00	6.00	12.00	8.00			20.00	54.00		
S.B. R.T.L.	26+50.00	20.00	12.00			26.70	30.00	96.00	20.00	26.70
S.B. D.L.	26+50.00	20.00	12.00			26.70	30.00	96.00	20.00	26.70
S.B. RAMP	36+40.00	20.00	12.00			26.70	30.00	96.00	20.00	26.70
MISC	MISC	6.00	12.00	8.00			20.00	54.00		
MISC	MISC	6.00	12.00	8.00			20.00	54.00		
MISC	MISC	6.00	12.00	8.00			20.00	54.00		
MISC	MISC	6.00	12.00	8.00			20.00	54.00		
MISC	MISC	12.00	12.00		16.00		20.00	72.00		16.00
MISC	MISC	12.00	12.00		16.00		20.00	72.00		16.00
MISC	MISC	20.00	12.00			26.70	30.00	96.00	20.00	26.70
SUB-TOTAL =				48.00	32.00	133.50	310.00	948.00	100.00	165.50
SUB-TOTAL 1=				320.00	0.00	160.00	866.00	2610.00	90.00	160.00
TOTAL =				368.00	32.00	293.50	1176.00	3558.00	190.00	325.50
USE =				368.00 (SQ YD)	32.00 (SQ YD)	294.00 (SQ YD)	1176.00 (EACH)	3558.00 (FT)	190.00 (EACH)	326.00 (SQ YD)

NOTES:

THE STATIONS LISTED FOR THE PATCHES ARE APPROXIMATE LOCATIONS. THE ACTUAL LOCATION AND SIZE SHALL BE FIELD VERIFIED AS SPECIFIED IN G.N.-442B.

- D.L. = DRIVING LANE
- P.L. = PASSING LANE
- R.T.L. = RIGHT TURN LANE