

STATE OF ILLINOIS
DEPARTMENT OF TRANSPORTATION
DIVISION OF HIGHWAYS

**PROPOSED
HIGHWAY PLANS**

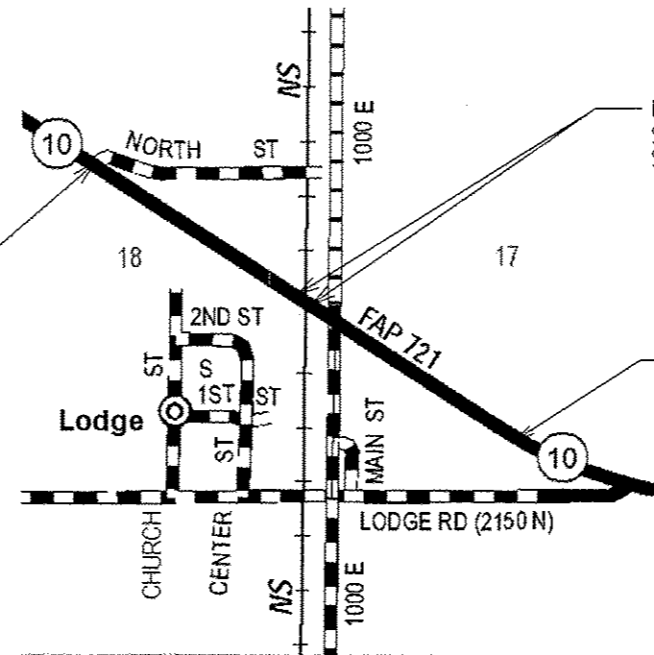
F.A.P. ROUTE 721 (IL 10)
SECTION: D5 CM PATCHING 2016-3

PATCHING
PIATT COUNTY

C-95-060-15

North St. to West of Lodge Rd. in Lodge

R6E



F.A.P. RTE.	SECTION	COUNTY	TOTAL SHEETS	SHEET NO.
721	D5 CM PATCHING 2016-3	PIATT	6	1
		ILLINOIS	CONTRACT NO. 70B61	

D-95-060-15



LOCATION OF SECTION INDICATED THUS: - [shaded area] -

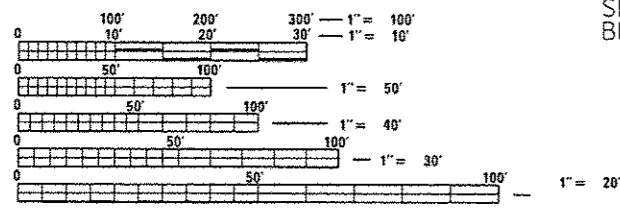
CURRENT TRAFFIC DATA

E.A.P. 721 / IL 10

2015 ADT	=1800
PV	=1425
SU	=265
MU	=110

Design Designation
Minor Arterial

TOWNSHIP : SANGAMON

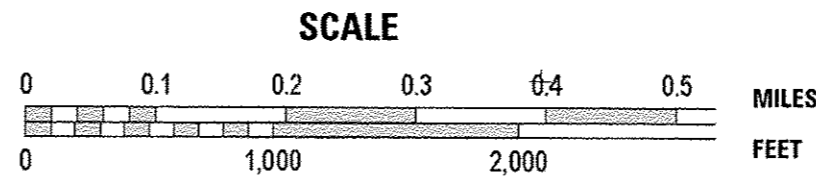


FULL SIZE PLANS HAVE BEEN PREPARED USING STANDARD ENGINEERING SCALES. REDUCED SIZED PLANS WILL NOT CONFORM TO STANDARD SCALES. IN MAKING MEASUREMENTS ON REDUCED PLANS, THE ABOVE SCALES MAY BE USED.

J.U.L.I.E.
JOINT UTILITY LOCATION INFORMATION FOR EXCAVATION
1-800-892-0123
OR 811

PROJECT ENGINEER: JASON STULTS
SQUAD LEADER : GREG EAGLIN
DESIGNER: MATTHEW MURPHY
PHONE: 217-465-4181

CONTRACT NO. 70B61



GROSS LENGTH = 2117.5 FT. = 0.401 MILE
NET LENGTH = 2040.5 FT. = 0.386 MILE

STATE OF ILLINOIS
DEPARTMENT OF TRANSPORTATION
DIVISION OF HIGHWAYS

SUBMITTED January 22, 2016

James A. James
DEPUTY DIRECTOR OF HIGHWAYS, REGION ENGINEER

Maureen M. Addis, PE
ENGINEER OF DESIGN AND ENVIRONMENT

March 18, 2016

Amor Esman, PE
DIRECTOR OF HIGHWAYS, CHIEF ENGINEER

**PRINTED BY THE AUTHORITY
OF THE STATE OF ILLINOIS**

INDEX OF SHEETS

SHEET NO.	DESCRIPTION
1	COVER SHEET
2	INDEX OF SHEETS
2	LIST OF STANDARDS
2	GENERAL NOTES
3	DETAILED LOCATION MAP
4	SUMMARY OF QUANTITIES
5	EXISTING TYPICAL CROSS SECTIONS
6	SCHEDULE OF QUANTITIES

LIST OF STANDARDS

STANDARD NO.	NAME OF STANDARD
000001-06	STANDARD SYMBOLS, ABBREVIATIONS AND PATTERNS
001001-02	AREAS OF REINFORCEMENT BARS
001006	DECIMAL OF AN INCH AND OF A FOOT
420001-08	PAVEMENT JOINTS
420701-03	PAVEMENT WELDED WIRE REINFORCEMENT
442101-07	CLASS B PATCHES
701201-04	LANE CLOSURE, 2 LANE, 2 WAY, DAY ONLY, FOR SPEEDS \geq 45 MPH
701301-04	LANE CLOSURE, 2 LANE, 2 WAY, SHORT TIME OPERATIONS
701901-05	TRAFFIC CONTROL DEVICES

GENERAL NOTES

G.N.-100
ENGLISH UNITS OF MEASUREMENT SHALL GOVERN OVER AND SUPERSEDE ANY METRIC UNITS SHOWN IN THIS CONTRACT, WHERE INCLUDED, METRIC UNITS ARE FOR INFORMATION ONLY.

G.N.-100A
ELECTRONIC FILES AND / OR ELECTRONIC SURVEY INFORMATION INCLUDING CADD FILES WILL NOT BE AVAILABLE TO THE CONTRACTOR.

G.N.- 442B - PATCHING SCHEDULES
THE PATCHING SCHEDULES INCLUDED IN THE PLANS REPRESENT THE BEST INFORMATION AVAILABLE AT THE TIME OF COMPLETION OF THE PLANS FOR LETTING. VARIATIONS IN LOCATION AND SIZES OF BOTH FULL-DEPTH AND PARTIAL-DEPTH PATCHES MAY OCCUR.

G.N.-1004.01
COARSE AGGREGATE GRADATION CA-10 MAY BE USED WHENEVER COARSE AGGREGATE CA-6 IS SPECIFIED IN THE STANDARD SPECIFICATIONS.

COMMITMENTS:

THERE ARE NO COMMITMENTS FOR THIS CONTRACT.

FILE NAME *	USER NAME = Murphym	DESIGNED -	REVISED -	STATE OF ILLINOIS DEPARTMENT OF TRANSPORTATION	INDEX OF SHEETS, LIST OF STANDARDS GENERAL NOTES	F.A.P. /	SECTION	COUNTY	TOTAL SHEET	
g:\IL\88458\INTEG\illinois.gov\PI\DOT\Documents\DOT Offices\District 5\Projects\DS7\DRAWING\data\Design\DS72861-shr-gennote.d	PLLOT SCALE = 48.2882' / in.	CHECKED -	REVISED -			721	D5 CM PATCHING 2016-3	PIATT	6	2
MODEL NAME	PLOT DATE = 1/25/2016	DATE -	REVISED -			SCALE: 20		SHEET 1 OF 1 SHEETS		STA. TO STA.
						ILLINOIS FED. AID PROJECT				
						CONTRACT NO. TQB61				

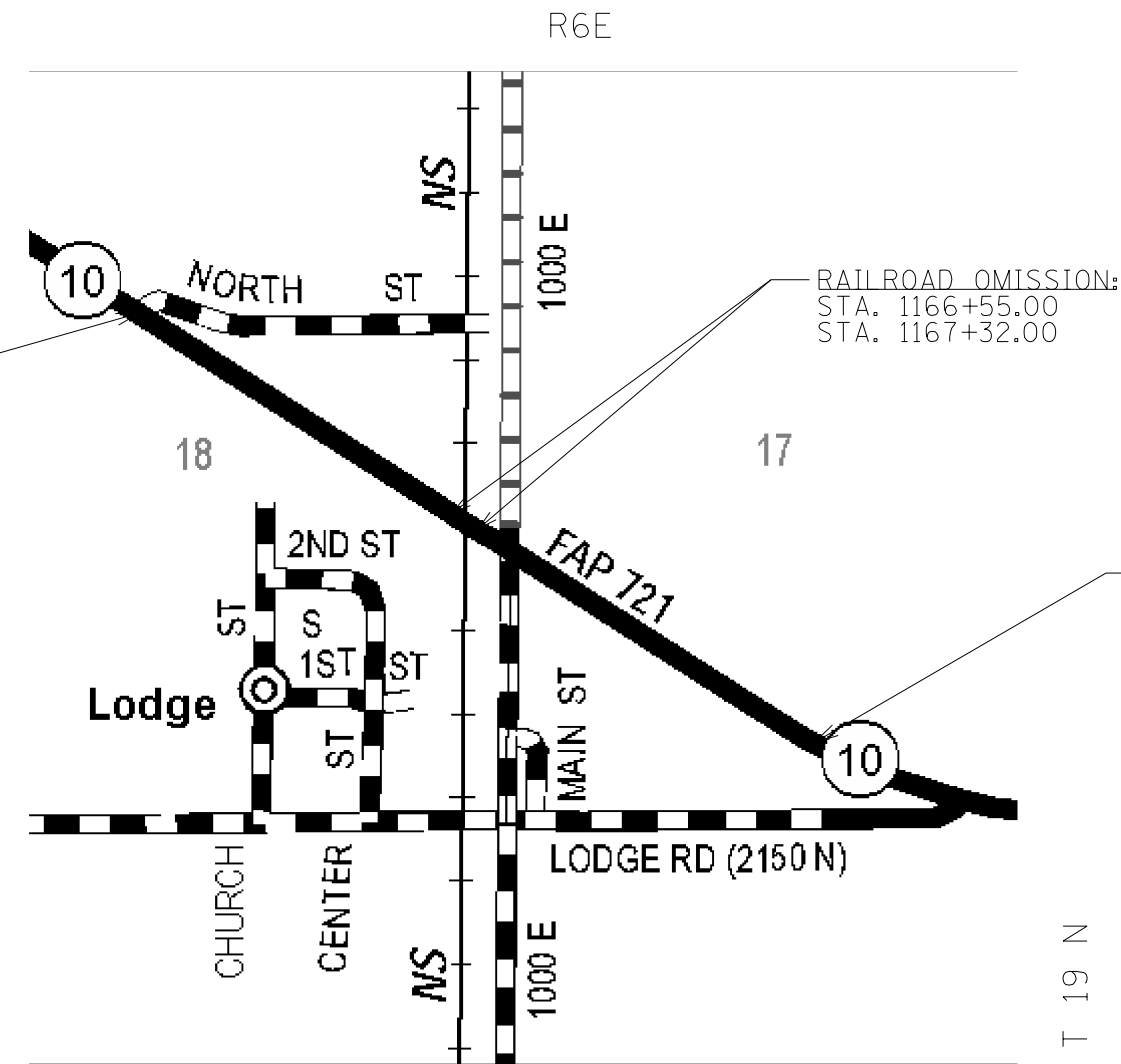
FAP ROUTE 721 / (IL. 10)
FROM NORTH STREET TO WEST OF LODGE ROAD
PIATT COUNTY / SANGAMON TOWNSHIP

CURRENT TRAFFIC DATA

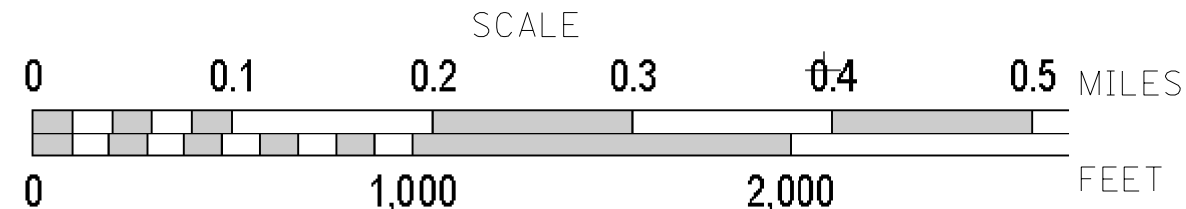
FAP 721/IL 10
 2015 ADT = 1800
 PU = 1425
 SU = 265
 MU = 110
 CLASS = MINOR ARTERIAL



SECTION D5 CM PATCHING 2016-3
 BEGINS: STA. 1155+82.50



SECTION D5 CM PATCHING 2016-3
 ENDS: STA. 1177+00.00



GROSS LENGTH OF PROJECT = 2117.50 FT = 0.401 MILES
NET LENGTH OF PROJECT = 2040.50 FT = 0.386 MILES

FILE NAME =	USER NAME = Murphy	DESIGNED -	REVISED -	STATE OF ILLINOIS DEPARTMENT OF TRANSPORTATION	DETAILED LOCATION MAP		F.A.P. RTE.	SECTION	COUNTY	TOTAL SHEETS	SHEET NO.
pw:\IL\084EBIDINTEG.illinois.gov\PIWIDOT\Documents\DOT Offices\District 5\Projects\057\DRAWING\Design\0570861-sht-locmap.dgn	DESIGNED -	REVISED -	721				D5 CM PATCHING 2016-3	PIATT	6	3	
MODELNAME	PLOT SCALE = 40.0000' / in.	CHECKED -	REVISED -		SHEET 1 OF 1 SHEETS		STA.	TO STA.	CONTRACT NO. 70B61		
	PLOT DATE = 1/25/2016	DATE -	REVISED -		ILLINOIS FED. AID PROJECT						

SUMMARY OF QUANTITIES

LOCATION OF WORK: FAP 721
 (IL. 10)
 2-LANE RURAL
 COUNTY: PIATT
 STA. 1155+82.50
 TO
 STA. 1177+00.00

FUNDING BREAKOUT: 100% STATE
 CONSTRUCTION TYPE CODE: 0005

CODE NO.	ITEM	UNIT	QUANTITY
44200050	WELDED WIRE REINFORCEMENT	SQ YD	78.0
44200934	CLASS B PATCHES, TYPE II, 8 INCH	SQ YD	593.0
44200942	CLASS B PATCHES, TYPE III, 8 INCH	SQ YD	24.0
44200944	CLASS B PATCHES, TYPE IV, 8 INCH	SQ YD	54.0
44201299	DOWEL BARS, 1-1/2"	EACH	1510.0
44213200	SAW CUTS	FOOT	3166.0
44213204	TIE BARS, 3/4"	EACH	20.0
67100100	MOBILIZATION	L SUM	1.0
70100450	TRAFFIC CONTROL AND PROTECTION, STANDARD 701201	L SUM	1.0

• SPECIALTY ITEMS

FILE NAME =	USER NAME = Murphy	DESIGNED -	REVISED -	STATE OF ILLINOIS DEPARTMENT OF TRANSPORTATION	SUMMARY OF QUANTITIES	F.A.P. RTE.	SECTION	COUNTY	TOTAL SHEETS	SHEET NO.
g:\11\0846810\NTE0\Illinois.gov\PI\DOT\Documents\DOT Offices\District SN\Projects\057	Documents\DOT Offices\District SN\Projects\057	DRAWN	REVISED			721	D5 CM PATCHING 2016-3	PIATT	6	4
MODELNAME	PLOT SCALE = 48.0000' / 1" =	CHECKED -	REVISED -		SCALE: 20	SHEET 1 OF 1 SHEETS		STA.	TO STA.	CONTRACT NO. 70B61
	PLOT DATE = 1/29/2016	DATE -	REVISED -		ILLINOIS FED. AID PROJECT					

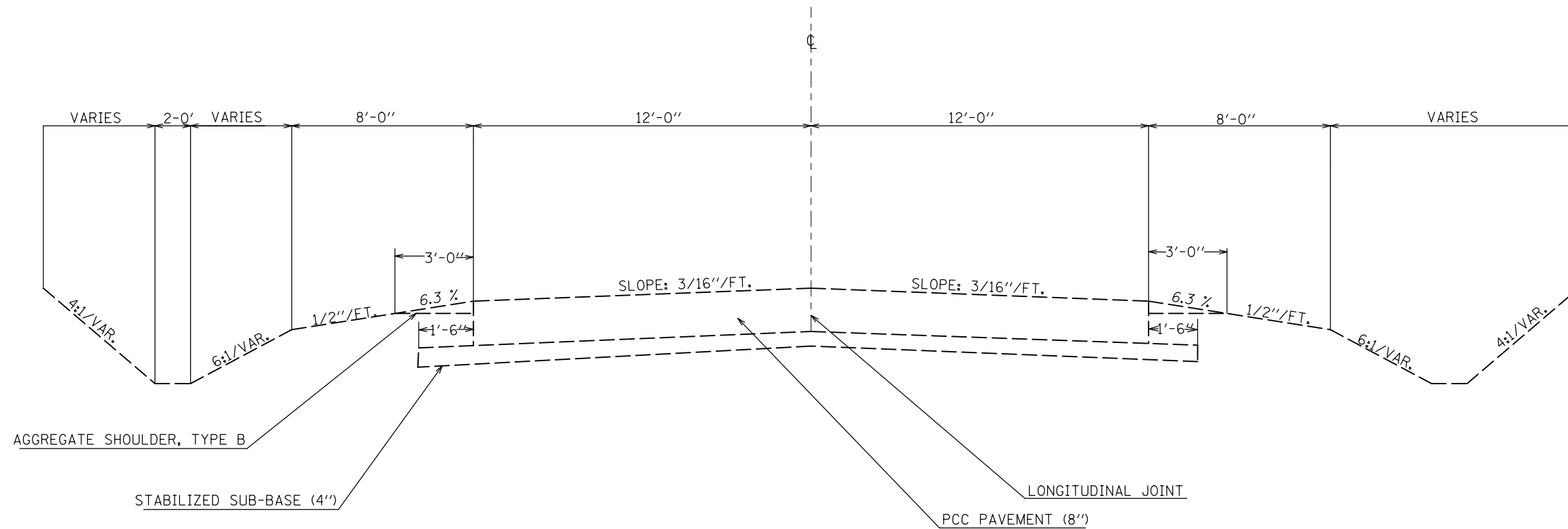
EXISTING TYPICAL CROSS SECTION

FAP 721 (IL. 10)

STATION TO STATION

1155 + 82.50 1166 + 55.00

1167 + 32.00 1177 + 00.00



FILE NAME =	USER NAME = Murphy	DESIGNED -	REVISED -
p:\IL\084EBIDINTEG\illinois.gov\PI\DOT\Documents\DOT Offices\District 5\Projects\057\DRAWING\Design\0570861-sht-typical.dgn		CHECKED -	REVISED -
MODELNAME	PLOT DATE = 1/25/2016	DATE -	REVISED -

STATE OF ILLINOIS
DEPARTMENT OF TRANSPORTATION

EXISTING TYPICAL CROSS SECTION

SCALE: SHEET 1 OF 1 SHEETS STA. TO STA.

F.A.P. RTE.	SECTION	COUNTY	TOTAL SHEETS	SHEET NO.
721	D5 CM PATCHING 2016-3	PIATT	6	5
CONTRACT NO. 70B61			ILLINOIS FED. AID PROJECT	

SCHEDULE OF QUANTITIES

CLASS B PATCHING SCHEDULE, 8" FAP 721 (IL. 10)

LOCATION	STATION	LENGTH (FT)	WIDTH (FT)	44200934 TYPE II, 8" (SQ YD)	44200942 TYPE III, 8" (SQ YD)	44200944 TYPE IV, 8" (SQ YD)	44201299 DOWEL BARS, 1 1/2" (EACH)	44213200 SAW CUTS (FT)	44213204 TIE BARS 3/4" (EACH)	44200050 WELDED WIRE REINFORCEMENT (SQ YD)
E.B.	1156+00.00	6.00	12.00	8.00			20.00	42.00		
E.B.	1159+00.00	6.00	12.00	8.00			20.00	42.00		
E.B.	1159+85.00	6.00	12.00	8.00			20.00	42.00		
E.B.	1160+00.00	6.00	12.00	8.00			20.00	42.00		
E.B.	1160+70.00	6.00	12.00	8.00			20.00	42.00		
E.B.	1161+40.00	6.00	12.00	8.00			20.00	42.00		
E.B.	1161+60.00	6.00	12.00	8.00			20.00	42.00		
E.B.	1163+90.00	6.00	12.00	8.00			20.00	42.00		
E.B.	1164+05.00	6.00	12.00	8.00			20.00	42.00		
E.B.	1164+90.00	20.00	12.00			26.70	30.00	56.00	10.00	26.70
E.B.	1165+45.00	6.00	12.00	8.00			20.00	42.00		
E.B.	1167+45.00	6.00	12.00	8.00			20.00	42.00		
E.B.	1167+75.00	6.00	12.00	8.00			20.00	42.00		
E.B.	1167+85.00	6.00	12.00	8.00			20.00	42.00		
E.B.	1168+10.00	6.00	12.00	8.00			20.00	42.00		
E.B.	1168+40.00	8.00	12.00	10.70			20.00	44.00		
E.B.	1169+30.00	6.00	12.00	8.00			20.00	42.00		
E.B.	1170+30.00	6.00	12.00	8.00			20.00	42.00		
E.B.	1170+75.00	6.00	12.00	8.00			20.00	42.00		
E.B.	1171+05.00	6.00	12.00	8.00			20.00	42.00		
E.B.	1171+50.00	6.00	12.00	8.00			20.00	42.00		
E.B.	1172+20.00	6.00	12.00	8.00			20.00	42.00		
E.B.	1172+42.00	6.00	12.00	8.00			20.00	42.00		
E.B.	1172+75.00	6.00	12.00	8.00			20.00	42.00		
E.B.	1172+90.00	6.00	12.00	8.00			20.00	42.00		
E.B.	1173+55.00	6.00	12.00	8.00			20.00	42.00		
E.B.	1174+25.00	6.00	12.00	8.00			20.00	42.00		
E.B.	1174+40.00	6.00	12.00	8.00			20.00	42.00		
E.B.	1174+55.00	6.00	12.00	8.00			20.00	42.00		
E.B.	1174+65.00	6.00	12.00	8.00			20.00	42.00		
E.B.	1175+10.00	6.00	12.00	8.00			20.00	42.00		
E.B.	1175+55.00	20.00	12.00			26.70	30.00	56.00	10.00	26.70
E.B.	1175+70.00	6.00	12.00	8.00			20.00	42.00		
E.B.	1176+55.00	6.00	12.00	8.00			20.00	42.00		
SUB-TOTAL 1=				258.70 (SQ YD)	0.00 (SQ YD)	53.40 (SQ YD)	700.00 (EACH)	1458.00 (FT)	20.00 (EACH)	53.40 (SQ YD)

NOTES:

THE STATIONS LISTED FOR THE PATCHES ARE APPROXIMATE LOCATIONS. THE ACTUAL LOCATION AND SIZE SHALL BE FIELD VERIFIED AS SPECIFIED IN G.N.-442B.

E.B. = EAST BOUND LANE
W.B. = WEST BOUND LANE

CLASS B PATCHING SCHEDULE, 8" (CONTINUED) FAP 721 (IL. 10)

LOCATION	STATION	LENGTH (FT)	WIDTH (FT)	44200934 TYPE II, 8" (SQ YD)	44200942 TYPE III, 8" (SQ YD)	44200944 TYPE IV, 8" (SQ YD)	44201299 DOWEL BARS, 1 1/2" (EACH)	44213200 SAW CUTS (FT)	44213204 TIE BARS 3/4" (EACH)	44200050 WELDED WIRE REINFORCEMENT (SQ YD)
W.B.	1156+00.00	6.00	12.00	8.00			20.00	42.00		
W.B.	1156+15.00	6.00	12.00	8.00			20.00	42.00		
W.B.	1159+00.00	6.00	12.00	8.00			20.00	42.00		
W.B.	1160+00.00	6.00	12.00	8.00			20.00	42.00		
W.B.	1160+70.00	6.00	12.00	8.00			20.00	42.00		
W.B.	1161+40.00	6.00	12.00	8.00			20.00	42.00		
W.B.	1162+10.00	8.00	12.00	10.70			20.00	44.00		
W.B.	1164+05.00	8.00	12.00	10.70			20.00	44.00		
W.B.	1164+90.00	10.00	12.00	13.30			20.00	46.00		
W.B.	1165+45.00	6.00	12.00	8.00			20.00	42.00		
W.B.	1166+05.00	6.00	12.00	8.00			20.00	42.00		
W.B.	1167+45.00	6.00	12.00	8.00			20.00	42.00		
W.B.	1167+75.00	6.00	12.00	8.00			20.00	42.00		
W.B.	1168+10.00	6.00	12.00	8.00			20.00	42.00		
W.B.	1168+40.00	18.00	12.00		24.00		30.00	54.00		24.00
W.B.	1169+00.00	6.00	12.00	8.00			20.00	42.00		
W.B.	1169+30.00	6.00	12.00	8.00			20.00	42.00		
W.B.	1169+60.00	6.00	12.00	8.00			20.00	42.00		
W.B.	1169+85.00	6.00	12.00	8.00			20.00	42.00		
W.B.	1169+98.00	6.00	12.00	8.00			20.00	42.00		
W.B.	1170+30.00	6.00	12.00	8.00			20.00	42.00		
W.B.	1170+60.00	6.00	12.00	8.00			20.00	42.00		
W.B.	1171+05.00	6.00	12.00	8.00			20.00	42.00		
W.B.	1171+35.00	6.00	12.00	8.00			20.00	42.00		
W.B.	1171+50.00	6.00	12.00	8.00			20.00	42.00		
W.B.	1172+20.00	6.00	12.00	8.00			20.00	42.00		
W.B.	1172+42.00	6.00	12.00	8.00			20.00	42.00		
W.B.	1172+75.00	6.00	12.00	8.00			20.00	42.00		
W.B.	1172+90.00	6.00	12.00	8.00			20.00	42.00		
W.B.	1173+45.00	8.00	12.00	10.70			20.00	44.00		
W.B.	1173+55.00	6.00	12.00	8.00			20.00	42.00		
W.B.	1174+00.00	8.00	12.00	10.70			20.00	44.00		
W.B.	1174+40.00	6.00	12.00	8.00			20.00	42.00		
W.B.	1175+10.00	8.00	12.00	10.70			20.00	44.00		
W.B.	1175+40.00	6.00	12.00	8.00			20.00	42.00		
W.B.	1175+70.00	6.00	12.00	8.00			20.00	42.00		
W.B.	1175+90.00	6.00	12.00	8.00			20.00	42.00		
W.B.	1176+10.00	8.00	12.00	10.70			20.00	44.00		
W.B.	1176+25.00	6.00	12.00	8.00			20.00	42.00		
W.B.	1176+55.00	6.00	12.00	8.00			20.00	42.00		
SUB-TOTAL 1=				333.50	24.00	0.00	810.00	1708.00	0.00	24.00
SUB-TOTAL 2=				258.70	0.00	53.40	700.00	1458.00	20.00	53.40
TOTAL =				592.20	24.00	53.40	1510.00	3166.00	20.00	77.40
USE =				593.00 (SQ YD)	24.00 (SQ YD)	54.00 (SQ YD)	1510.00 (EACH)	3166.00 (FT)	20.00 (EACH)	78.00 (SQ YD)