

STATE OF ILLINOIS
DEPARTMENT OF TRANSPORTATION
DIVISION OF HIGHWAYS

**PROPOSED
HIGHWAY PLANS**

FAP 760 & FAS 1531
SECTION D5 CM PATCHING 2016-6

PATCHING
PIATT COUNTY

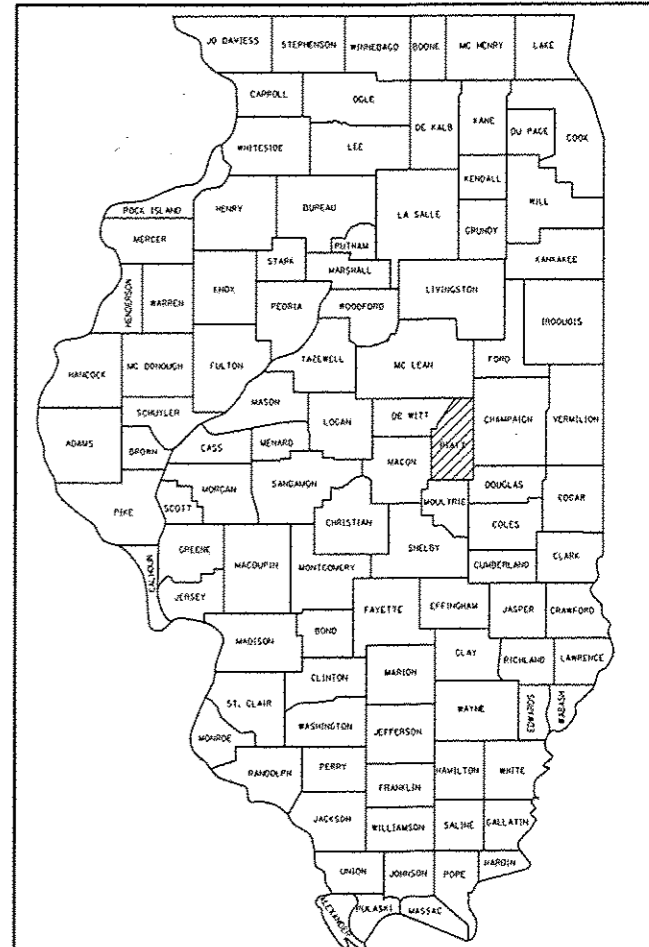
C-95-061-15

N. OF SANGAMON RIVER BR. TO 1 MI S. OF SANGAMON RIVER BR. &
CISCO TO W. OF MONTICELLO

F.A. RTE.	SECTION	COUNTY	TOTAL SHEETS	SHEET NO.
*	D5 CM PATCHING 2016-6	PIATT	5	1
		ILLINOIS	CONTRACT NO. 70B62	

*FAP 760 & FAS 1531

D-95-061-15

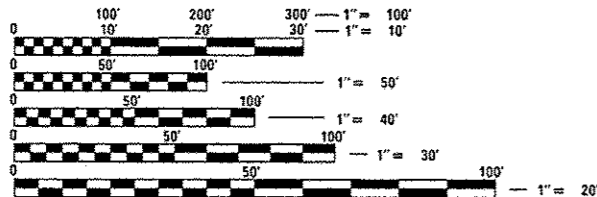


LOCATION OF SECTION INDICATED THUS: - -

FOR INDEX OF SHEETS, SEE SHEET NO. 2
FOR GENERAL NOTES, SEE SHEET NO. 2
FOR SUMMARY OF QUANTITIES, SEE SHEET NO. 3

CURRENT TRAFFIC DATA			
FAP 760		FAS 1531	
2016 =	750	2016 =	900
PV % =	81.3	PV % =	92.3
SU % =	9.3	SU % =	5.9
MU % =	9.4	MU % =	1.8

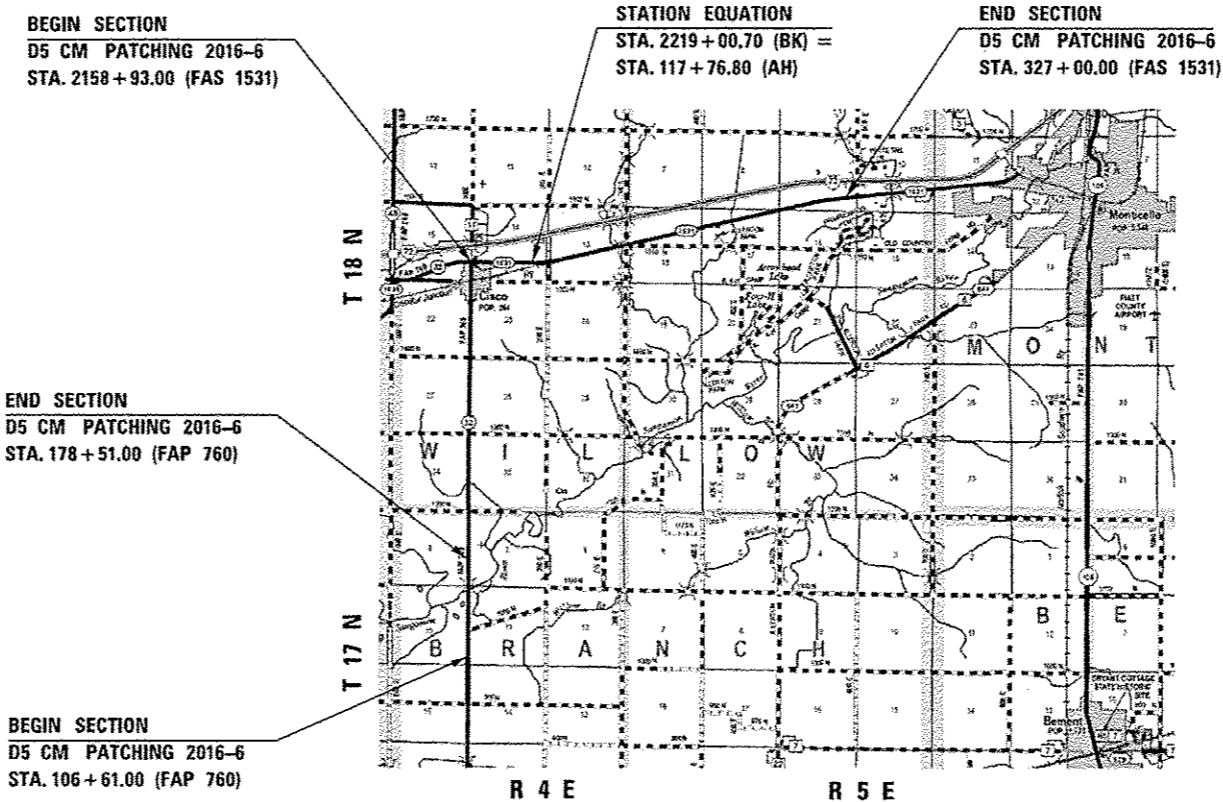
DESIGN DESIGNATION
MIN. ARTERIAL (FAP 760)
MAJ. COLL. (FAS 1531)



FULL SIZE PLANS HAVE BEEN PREPARED USING STANDARD ENGINEERING SCALES. REDUCED SIZED PLANS WILL NOT CONFORM TO STANDARD SCALES. IN MAKING MEASUREMENTS ON REDUCED PLANS, THE ABOVE SCALES MAY BE USED.

J.U.L.I.E.
JOINT UTILITY LOCATION INFORMATION FOR EXCAVATION
1-800-892-0123
OR 811 TOWNSHIPS: WILLOW & BRANCH

PROJECT ENGINEER: JASON W. STULTS
DESIGN SQUAD LEADER: RYAN T. CARROLL
PHONE: 217-465-4181
CONTRACT NO. 70B62



GROSS LENGTH = 34,120.90 FT. = 6.462 MILE
NET LENGTH = 34,120.90 FT. = 6.462 MILE

STATE OF ILLINOIS
DEPARTMENT OF TRANSPORTATION
DIVISION OF HIGHWAYS

SUBMITTED JANUARY 27, 2016
Kensil A. Barnett
DEPUTY DIRECTOR OF HIGHWAYS, REGION 3 ENGINEER *ckc*

MARCH 18, 2016
Maurice M. Addis P.E.
acting ENGINEER OF DESIGN AND ENVIRONMENT

MARCH 18, 2016
Cher Osman P.E.
DIRECTOR OF HIGHWAYS, CHIEF ENGINEER

PRINTED BY THE AUTHORITY
OF THE STATE OF ILLINOIS

INDEX OF SHEETS

SHEET NO.	DESCRIPTION
1	COVER SHEET
2	INDEX OF SHEETS & LIST OF HIGHWAY STANDARDS & GENERAL NOTES & COMMITMENTS
3	SUMMARY OF QUANTITIES
4	EXISTING TYPICAL CROSS SECTIONS
5	SCHEDULE OF QUANTITIES

LIST OF STANDARDS

STANDARD NO.	DESCRIPTION
000001-06	STANDARD SYMBOLS, ABBREVIATIONS, AND PATTERNS
001001-02	AREAS OF REINFORCEMENT BARS
001006	DECIMAL OF AN INCH AND OF A FOOT
420001-08	PAVEMENT JOINTS
420701-03	PAVEMENT WELDED WIRE REINFORCEMENT
442101-07	CLASS B PATCHES
701001-02	OFF-RD OPERATIONS, 2L, 2W, MORE THAN 15' (4.5M) AWAY
701006-05	OFF-RD OPERATIONS, 2L, 2W, 15' (4.5M) TO 24" (600 MM) FROM PAVEMENT EDGE
701201-04	LANE CLOSURE, 2L, 2W, DAY ONLY FOR SPEEDS ≥ 45 MPH
701301-04	LANE CLOSURE, 2L, 2W, SHORT TIME OPERATIONS
701901-05	TRAFFIC CONTROL DEVICES

GENERAL NOTES

G.N.-100
ENGLISH UNITS OF MEASUREMENT SHALL GOVERN OVER AND SUPERSEDE ANY METRIC UNITS SHOWN IN THIS CONTRACT, WHERE INCLUDED, METRIC UNITS ARE FOR INFORMATION ONLY.

G.N.-100A
ELECTRONIC FILES AND/OR ELECTRONIC SURVEY INFORMATION INCLUDING CADD FILES WILL NOT BE AVAILABLE TO THE CONTRACTOR.

G.N.-442B – PATCHING SCHEDULES
THE PATCHING SCHEDULES INCLUDED IN THE PLANS REPRESENT THE BEST INFORMATION AVAILABLE AT THE TIME OF COMPLETION OF THE PLANS FOR LETTING. VARIATIONS IN LOCATION AND SIZES OF BOTH FULL-DEPTH AND PARTIAL-DEPTH PATCHES MAY OCCUR.

G.N.-1004.01
COARSE AGGREGATE GRADATION CA-10 MAY BE USED WHENEVER COARSE AGGREGATE CA-6 IS SPECIFIED IN THE STANDARD SPECIFICATIONS.

COMMITMENTS

THERE ARE NO COMMITMENTS FOR THIS CONTRACT.

FILE NAME #	USER NAME # carrollrt	DESIGNED -	REVISED -	STATE OF ILLINOIS DEPARTMENT OF TRANSPORTATION	INDEX OF SHEETS, LIST OF STANDARDS, GENERAL NOTES, & COMMITMENTS	F.A. RTE.	SECTION	COUNTY	TOTAL SHEETS	SHEET NO.
p:\11\284EBID\INTEG\illinois.gov\PI\DOT\Documents\DOT Offices\District 5\Projects\057	DRAWING\Design\057862-sht-schedule	CHECKED -	REVISED -			*	D5 CM PATCHING 2016-6	PIATT	5	2
PLOT SCALE = 40.0282" / in.		DATE -	REVISED -			*FAP 760 & FAS 1531	CONTRACT NO. 70B62			
PLOT DATE = 1/29/2016						ILLINOIS FED. AID PROJECT				

SUMMARY OF QUANTITIES

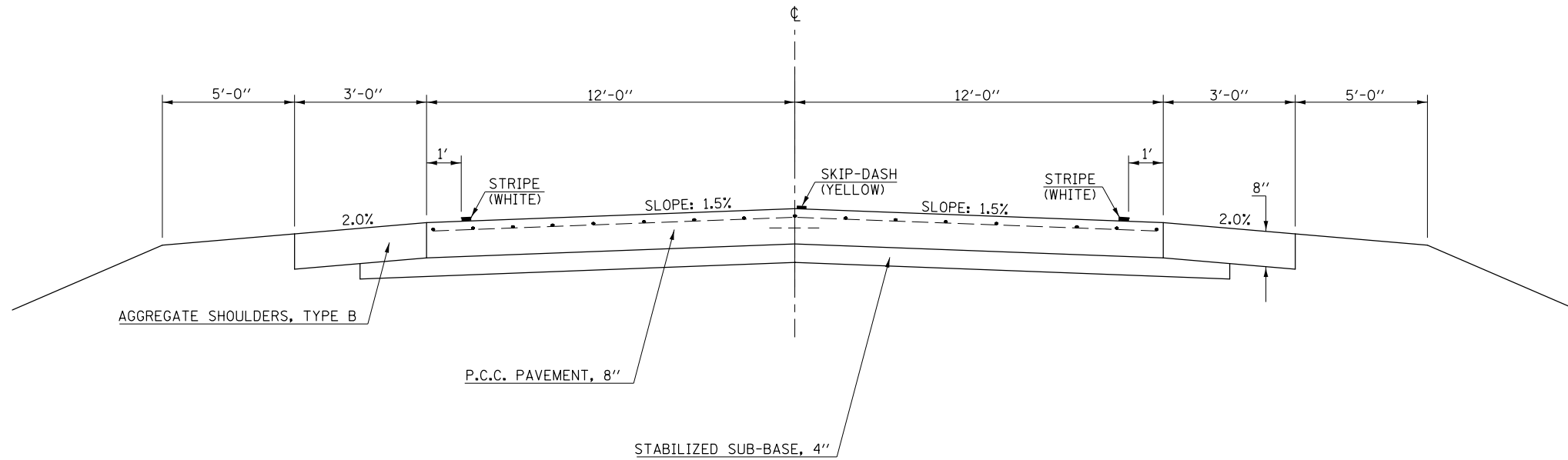
LOCATION: 2-LANE 2-WAY RURAL STA. 106+61.00 TO STA. 178+51.00 COUNTY: PIATT FUNDING BREAKOUT: 100% STATE CONSTRUCTION CODE: 0005	FAP 760 (IL 32) 2-LANE 2-WAY RURAL STA. 2158+93.00 TO STA. 327+00.00 PIATT 100% STATE 0005	FAS 1531 (OLD IL 47) 2-LANE 2-WAY RURAL STA. 2158+93.00 TO STA. 327+00.00 PIATT 100% STATE 0005
---	--	---

CODE NO.	DESCRIPTION	UNIT	TOTAL QUANTITY	QUANTITY	QUANTITY
44200050	WELDED WIRE REINFORCEMENT	SQ YD	76.0	20.0	56.0
44200934	CLASS B PATCHES, TYPE II, 8 INCH	SQ YD	368.00	368.0	
44200942	CLASS B PATCHES, TYPE III, 8 INCH	SQ YD	20.0	20.0	
44200956	CLASS B PATCHES, TYPE II, 9 INCH	SQ YD	56.0		56.0
44200962	CLASS B PATCHES, TYPE III, 9 INCH	SQ YD	16.0		16.0
44200964	CLASS B PATCHES, TYPE IV, 9 INCH	SQ YD	40.0		40.0
44201299	DOWEL BARS 1 1/2"	EACH	1,090.0	940.0	150.0
44213200	SAW CUTS	FOOT	2,319.0	1,983.0	336.0
44213204	TIE BARS 3/4"	EACH	15.0		15.0
67100100	MOBILIZATION	LSUM	1.0	0.8	0.2
70100450	TRAFFIC CONTROL AND PROTECTION, STANDARD 701201	LSUM	1.0	0.8	0.2

*SPECIALTY ITEM

① EXISTING TYPICAL CROSS SECTION

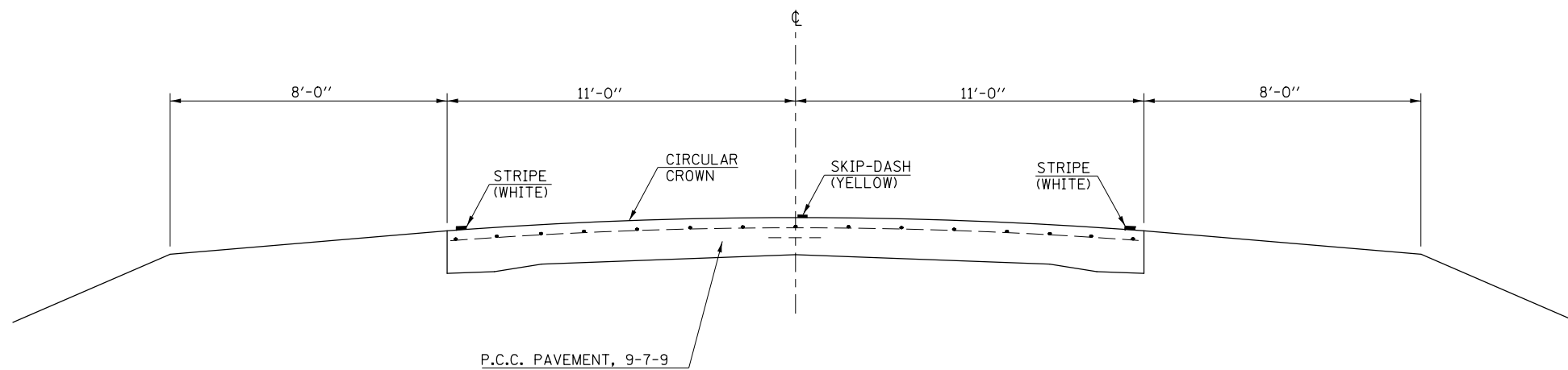
STA. 106+61 TO STA. 178+51
F.A.P. 760 (IL 32)



② EXISTING TYPICAL CROSS SECTION

STA. 2158+93.00 TO STA. 327+00.00
F.A.S. 1531 (OLD IL 47)

STATION EQUATION
2219+00.70 (BK) = 117+76.80 (AH)



FILE NAME =	USER NAME = carrollrt	DESIGNED -	REVISED -	STATE OF ILLINOIS DEPARTMENT OF TRANSPORTATION	TYPICAL CROSS SECTIONS			F.A. RTE.	SECTION	COUNTY	TOTAL SHEETS	SHEET NO.
p:\IL\084EBIDINTEG.illinois.gov\PIWIDOT\Documents\IDOT Offices\District 5\Projects\0579\BROWND\Design\05790862-shr-typicals.dwg	DRAWN	REVISIONS	DATE					•	D5 CM PATCHING 2016-6	PIATT	5	4
#MODELNAME#	PLOT SCALE = 40.0000' / in.	CHECKED -	REVISED -		SCALE:	•FAP 760 & FAS 1531	CONTRACT NO. 70B62		ILLINOIS FED. AID PROJECT			
	PLOT DATE = 1/28/2016	DATE -	REVISED -		SHEET 1 OF 1 SHEETS	STA.	TO STA.					

SCHEDULE OF QUANTITIES

CLASS B PATCHING ON FAP 760 (NORTHBOUND LANE)								
STATION	DIR.	LENGTH	WIDTH	44200934	44200942	44201299	44213200	44200050
				TYPE II	TYPE III	DOWEL	SAW CUTS	WELDED WIRE
				8.0"	8.0"	BARS		REINFORCEMENT
		FOOT	FOOT	SQ YD	SQ YD	EACH	FOOT	SQ YD
107+00.00	NB	6	12	8.0	0.0	20	42.0	0.0
107+25.00	NB	6	12	8.0	0.0	20	42.0	0.0
108+25.00	NB	6	12	8.0	0.0	20	42.0	0.0
110+85.00	NB	6	12	8.0	0.0	20	42.0	0.0
111+55.00	NB	6	12	8.0	0.0	20	42.0	0.0
111+85.00	NB	6	12	8.0	0.0	20	42.0	0.0
113+15.00	NB	6	12	8.0	0.0	20	42.0	0.0
114+50.00	NB	6	12	8.0	0.0	20	42.0	0.0
115+25.00	NB	6	12	8.0	0.0	20	42.0	0.0
115+75.00	NB	6	12	8.0	0.0	20	42.0	0.0
116+15.00	NB	6	12	8.0	0.0	20	42.0	0.0
117+85.00	NB	6	12	8.0	0.0	20	42.0	0.0
119+25.00	NB	6	12	8.0	0.0	20	42.0	0.0
119+50.00	NB	6	12	8.0	0.0	20	42.0	0.0
120+30.00	NB	6	12	8.0	0.0	20	42.0	0.0
120+70.00	NB	6	12	8.0	0.0	20	42.0	0.0
121+65.00	NB	6	12	8.0	0.0	20	42.0	0.0
124+95.00	NB	6	12	8.0	0.0	20	42.0	0.0
125+70.00	NB	6	12	8.0	0.0	20	42.0	0.0
128+65.00	NB	6	12	8.0	0.0	20	42.0	0.0
146+50.00	NB	6	12	8.0	0.0	20	42.0	0.0
147+50.00	NB	6	12	8.0	0.0	20	42.0	0.0
149+00.00	NB	6	12	8.0	0.0	20	42.0	0.0
156+80.00	NB	6	12	8.0	0.0	20	42.0	0.0
157+50.00	NB	6	12	8.0	0.0	20	42.0	0.0
158+50.00	NB	6	12	8.0	0.0	20	42.0	0.0
SUB-TOTALS =				208.0	0.0	520.0	1092.0	0.0
CLASS B PATCHING ON FAP 760 (SOUTHBOUND LANE)								
STATION	DIR.	LENGTH	WIDTH	44200934	44200942	44201299	44213200	44200050
				TYPE II	TYPE III	DOWEL	SAW CUTS	WELDED WIRE
				8.0"	8.0"	BARS		REINFORCEMENT
		FOOT	FOOT	SQ YD	SQ YD	EACH	FOOT	SQ YD
111+85.00	SB	6	12	8.0	0.0	20	42.0	0.0
112+75.00	SB	6	12	8.0	0.0	20	42.0	0.0
113+15.00	SB	6	12	8.0	0.0	20	42.0	0.0
114+50.00	SB	6	12	8.0	0.0	20	42.0	0.0
115+25.00	SB	6	12	8.0	0.0	20	42.0	0.0
115+75.00	SB	6	12	8.0	0.0	20	42.0	0.0
116+15.00	SB	6	12	8.0	0.0	20	42.0	0.0
117+85.00	SB	6	12	8.0	0.0	20	42.0	0.0
119+25.00	SB	6	12	8.0	0.0	20	42.0	0.0
119+50.00	SB	6	12	8.0	0.0	20	42.0	0.0
120+50.00	SB	6	12	8.0	0.0	20	42.0	0.0
121+50.00	SB	6	12	8.0	0.0	20	42.0	0.0
122+90.00	SB	15	12	0.0	20.0	20	51.0	20.0
124+95.00	SB	6	12	8.0	0.0	20	42.0	0.0
125+70.00	SB	6	12	8.0	0.0	20	42.0	0.0
128+65.00	SB	6	12	8.0	0.0	20	42.0	0.0
146+50.00	SB	6	12	8.0	0.0	20	42.0	0.0
147+50.00	SB	6	12	8.0	0.0	20	42.0	0.0
149+50.00	SB	6	12	8.0	0.0	20	42.0	0.0
156+80.00	SB	6	12	8.0	0.0	20	42.0	0.0
158+50.00	SB	6	12	8.0	0.0	20	42.0	0.0
SUB-TOTALS =				160.0	20.0	420.0	891.0	20.0
TOTALS =				368.0	20.0	940.0	1983.0	20.0

CLASS B PATCHING ON FAS 1531 (WESTBOUND LANE)										
STATION	DIR.	LENGTH	WIDTH	44200956	44200962	44200964	44201299	44213200	44213204	44200050
				TYPE II	TYPE III	TYPE IV	DOWEL	SAW CUTS	TIE BARS	WELDED WIRE
				9.0"	9.0"	9.0"	BARS		3/4"	REINFORCEMENT
		FOOT	FOOT	SQ YD	SQ YD	SQ YD	EACH	FOOT	EACH	SQ YD
2210+80.00	WB	10	12	13.3	0.0	0.0	20	46.0	0	0.0
2211+40.00	WB	10	12	13.3	0.0	0.0	20	46.0	0	0.0
129+30.00	WB	8	12	10.7	0.0	0.0	20	44.0	0	0.0
163+00.00	WB	30	12	0.0	0.0	40.0	30	66.0	15	40.0
198+15.00	WB	6	12	8.0	0.0	0.0	20	42.0	0	0.0
SUB-TOTALS =				45.3	0.0	40.0	110.0	244.0	15.0	40.0
CLASS B PATCHING ON FAS 1531 (EASTBOUND LANE)										
STATION	DIR.	LENGTH	WIDTH	44200956	44200962	44200964	44201299	44213200	44213204	44200050
				TYPE II	TYPE III	TYPE IV	DOWEL	SAW CUTS	TIE BARS	WELDED WIRE
				9.0"	9.0"	9.0"	BARS		3/4"	REINFORCEMENT
		FOOT	FOOT	SQ YD	SQ YD	SQ YD	EACH	FOOT	EACH	SQ YD
2211+00.00	EB	12	12	0.0	16.0	0.0	20	48.0	0	16.0
129+30.00	EB	8	12	10.7	0.0	0.0	20	44.0	0	0.0
SUB-TOTALS =				10.7	16.0	0.0	40.0	92.0	0.0	16.0
TOTALS =				56.0	16.0	40.0	150.0	336.0	15.0	56.0

CLASS B PATCHING SUMMARY									
LOCATION	44200934	44200942	44200956	44200962	44200964	44201299	44213200	44213204	44200050
	TYPE II	TYPE III	TYPE II	TYPE III	TYPE IV	DOWEL	SAW CUTS	TIE BARS	WELDED WIRE
	8"	8"	9"	9"	9"	BARS		3/4"	REINFORCEMENT
	SQ YD	SQ YD	SQ YD	SQ YD	SQ YD	EACH	FOOT	EACH	SQ YD
FAP 760	368.0	20.0				940.0	1,983.0		20.0
FAS 1531			56.0	16.0	40.0	150.0	336.0	15.0	56.0
TOTALS =	368.0	20.0	56.0	16.0	40.0	1,090.0	2,319.0	15.0	76.0