

STATE OF ILLINOIS
DEPARTMENT OF TRANSPORTATION
DIVISION OF HIGHWAYS

**PROPOSED
IMPROVEMENTS**

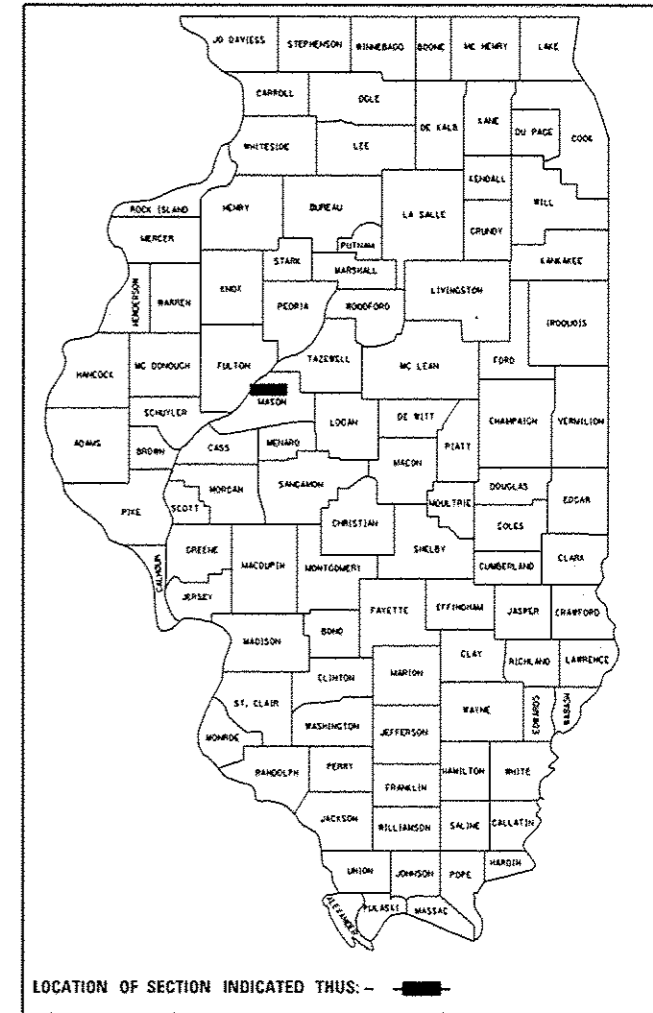
FAP 315 (US 136, IL97)
SECTION (1Z) PP
D.E. MISCELLANEOUS
CLASS C PATCHES
MASON CO.

C-96-034-16

R 9 W

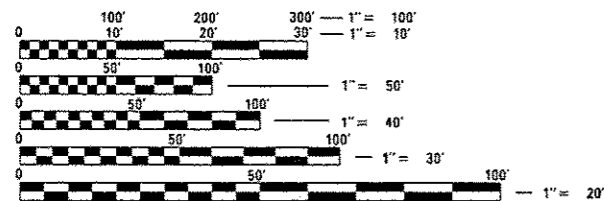
F.A.P. RTE.	SECTION	COUNTY	TOTAL SHEETS	SHEET NO.
315	(1Z) PP	MASON	4	1
		ILLINOIS	CONTRACT NO. 72121	

D-96-034-16



FOR INDEX OF SHEETS, SEE SHEET NO. 2

ADT (2015) = 7,300
MU = 275
MU = 450



FULL SIZE PLANS HAVE BEEN PREPARED USING STANDARD ENGINEERING SCALES. REDUCED SIZED PLANS WILL NOT CONFORM TO STANDARD SCALES. IN MAKING MEASUREMENTS ON REDUCED PLANS, THE ABOVE SCALES MAY BE USED.

J.U.L.I.E.
JOINT UTILITY LOCATION INFORMATION FOR EXCAVATION
1-800-892-0123
OR 811

PROJECT ENGINEER: MIKE IRWIN
PROJECT MANAGER: TIMOHTY SHARP

CONTRACT NO. 72121



BEGIN PROJECT
WATER STREET

END PROJECT
ORANGE STREET

HAVANA

NET LENGTH OF SECTION - 686.40 FOOT = 0.130 MILE

STATE OF ILLINOIS
DEPARTMENT OF TRANSPORTATION
DIVISION OF HIGHWAYS

SUBMITTED FEBRUARY 2 2016
Roger Z. Durbett
DEPUTY DIRECTOR OF HIGHWAYS, REGION ENGINEER

March 18 2016
Maureen M. Adams PE
ENGINEER OF DESIGN AND ENVIRONMENT

March 18 2016
Omer Aman PE
DIRECTOR OF HIGHWAYS, CHIEF ENGINEER

PRINTED BY THE AUTHORITY
OF THE STATE OF ILLINOIS

INDEX OF SHEETS

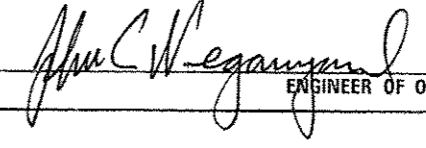
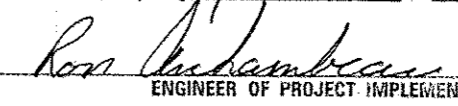
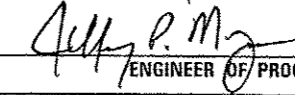
1. COVER
2. INDEX OF SHEETS, GENERAL NOTES, AND HIGHWAY STANDARDS
3. SUMMARY OF QUANTITIES
4. TYPICAL SECTIONS

HIGHWAY STANDARDS

- 442201-03 CLASS C AND D PATCHES
 701001-02 OFF-RD OPERATIONS, 2L, 2W, MORE THAN 15' (4.5 m) AWAY
 701501-06 URBAN LANE CLOSURE, 2L, 2W, UNDIVIDED
 701701-10 URBAN LANE CLOSURE, MULTILANE INTERSECTIONS
 701901-05 TRAFFIC CONTROL DEVICES

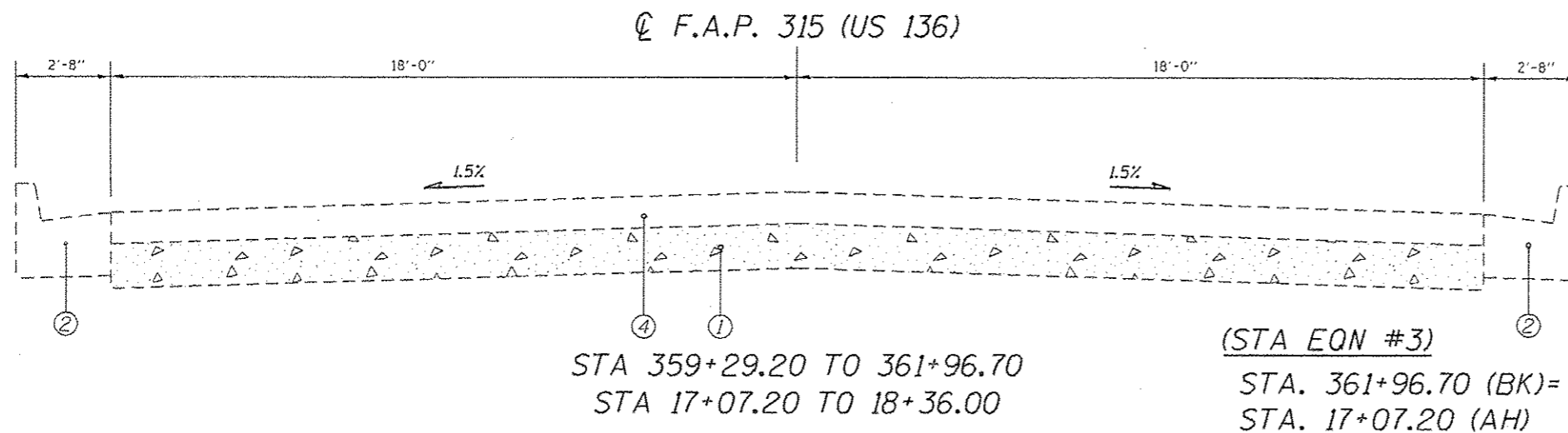
GENERAL NOTES

1. ANY REFERENCE TO THE STANDARDS THROUGHOUT THE PLANS SHALL BE INTERPRETED TO BE THE LATEST STANDARDS OF THE DEPARTMENT AS INCLUDED IN THE PLANS.

STATE OF ILLINOIS DEPARTMENT OF TRANSPORTATION DIVISION OF HIGHWAYS DISTRICT 6	
EXAMINED	JANUARY 21 st 20 16  ENGINEER OF OPERATIONS
EXAMINED	January 25 20 16  ENGINEER OF PROJECT IMPLEMENTATION
EXAMINED	January 27 20 16  ENGINEER OF PROGRAM DEVELOPMENT

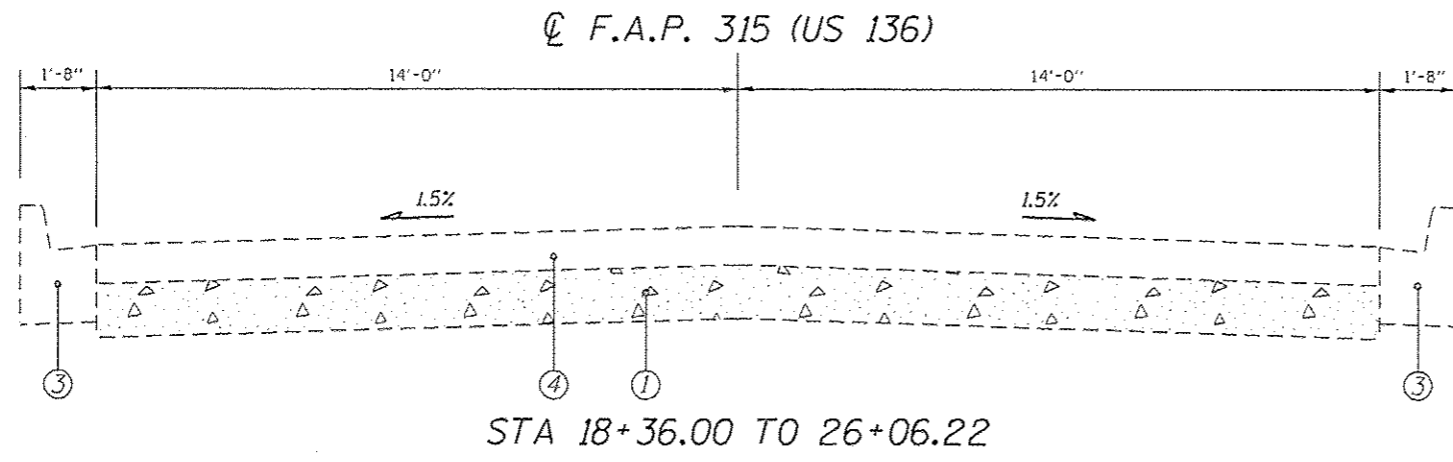
FILE NAME :	USER NAME : SharpAd	DESIGNED -	REVISED -	STATE OF ILLINOIS DEPARTMENT OF TRANSPORTATION		FAP RTE.	SECTION	COUNTY	TOTAL SHEETS	SHEET NO.
S:\CONTRACTS\CA0172121 - FAP 315 (IL97) - PATCHING - HAVANA\PLANS\havana-patching.dgn		DRAWN -	REVISED -			315	(12) PP	MASON	4	2
SHT_PLAN		CHECKED -	REVISED -							
		DATE -	REVISED -							
									CONTRACT NO. 72121	
						SCALE:	SHEET 1 OF 1 SHEETS	STA.	TO STA.	ILLINOIS FED. AID PROJECT

CODE NO.	ITEM	UNIT	TOTAL QUANTITY	CONSTR. CODE	
				ROADWAY	S. N.
			100% STATE		
44201377	CLASS C PATCHES, TY II, 12 INCH	SQ YD	50	50	
44201381	CLASS C PATCHES, TY III, 12 INCH	SQ YD	150	150	
44201383	CLASS C PATCHES, TY IV, 12 INCH	SQ YD	200	200	
67100100	MOBILIZATION	L SUM	1	1	
70102620	TRAFFIC CONTROL AND PROTECTION, STANDARD 701501	L SUM	1	1	
70102635	TRAFFIC CONTROL AND PROTECTION, STANDARD 701701	L SUM	1	1	



LEGEND

①	EXIST. BRICK OR P.C.C. PAVEMENT 7"
②	EXIST. COMBINATION CONCRETE CURB AND GUTTER, TY B-6.24
③	EXIST. COMBINATION CONCRETE CURB AND GUTTER, TY B-6.12
④	EXIST. H.M.A SURFACE 5"



FILE NAME :	USER NAME :	DESIGNED :	REVISED :	STATE OF ILLINOIS DEPARTMENT OF TRANSPORTATION	SCALE:	SHEET 1 OF 1 SHEETS	STA.	TO STA.	FA R.T.E.	SECTION	COUNTY	TOTAL SHEETS	SHEET NO.
S:\CONTRMAINT_CAD\72121 - FAP 315 (IL97)-PATCHING - HAVANA\PLANS\havana-patching.dgn	Sharptd	DRAWN -	REVISED -		315	(12) PP	MASON	4	4				
PLOT SCALE = 100.0000' / 1" =		CHECKED -	REVISED -		CONTRACT NO. 72121								
PLDT DATE = 1/21/2016		DATE -	REVISED -		ILLINOIS FED. AID PROJECT								