

STATE OF ILLINOIS
DEPARTMENT OF TRANSPORTATION
DIVISION OF HIGHWAYS
**PROPOSED
HIGHWAY PLANS**

FAU ROUTE 6874 (N. 6TH STREET)
SECTION 14-00079-00-PV
JOB NO. C-94-052-15
PROJECT NO. M-5046(009)
CITY OF MONMOUTH
WARREN COUNTY

F.A.U. RTE.	SECTION	COUNTY	TOTAL SHEETS	SHEET NO.
6874	14-00079-00-PV	WARREN	15	1
		ILLINOIS	CONTRACT NO. 89690	

INDEX OF SHEETS

- 1 COVER SHEET
- 2-4 SITE CONTROL/NOTES/QUANTITIES
- 5-6 TYPICAL SECTIONS
- 7-9 PLAN AND PROFILES
- 10-11 EROSION & SEDIMENT CONTROL
- 12 TRAFFIC CONTROL PLAN
- 13-15 CROSS SECTIONS

I.D.O.T. HIGHWAY STANDARDS

280001-07	TEMPORARY EROSION CONTROL SYSTEMS
420001-08	PAVEMENT JOINTS
420101-05	24' (7.2 m) JOINTED PCC PAVEMENT
442101-07	CLASS B PATCHES
701301-04	LANE CLOSURE, 2L, 2W, SHORT TERM OPERATIONS
701901-05	TRAFFIC CONTROL DEVICES
BLR 18-6	TRAFFIC CONTROL DEVICES-DAY LABOR MAINTENANCE
BLR 21-9	TYPICAL APPLICATION OF TRAFFIC CONTROL DEVICES FOR CONSTRUCTION ON RURAL LOCAL HIGHWAYS

SCALES

OVERALL PLAN	0	100
PLAN	0	20
PROFILE (HORIZ)	0	20
PROFILE (VERT)	0	5
CROSS SECTION (HORIZ)	0	10
CROSS SECTION (VERT)	0	5

CONTACTS

LOWELL CROW
MONMOUTH CITY ADMINISTRATOR
100 E. BROADWAY AVENUE
MONMOUTH, IL 61462
309-734-2141

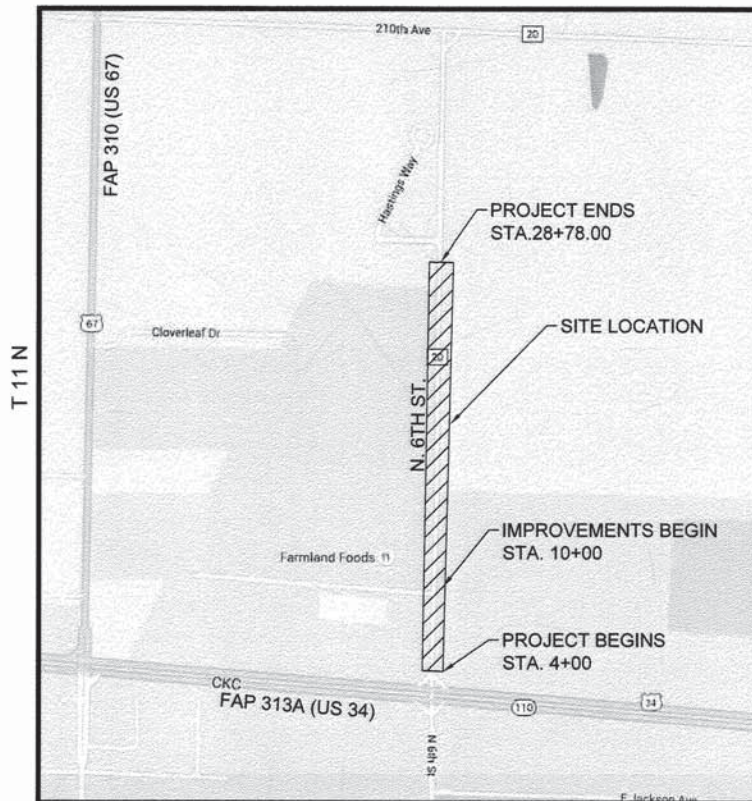


Know what's below.
Call before you dig.

J.U.L.I.E.
JOINT UTILITY LOCATION INFORMATION FOR EXCAVATION
1-800-892-0123

MISSMAN, INC. HAS ADOPTED SAFETY PROCEDURES FOR ITS EMPLOYEES WHO PROVIDE PROFESSIONAL ENGINEERING AND SURVEYING SERVICES. A COPY OF THESE PROCEDURES IS AVAILABLE FROM THE SAFETY OFFICER. MISSMAN, INC. PERSONNEL ARE NOT TRAINED IN CONTRACTOR (CONSTRUCTION) SAFETY AND COMPLIANCE PROCEDURES. THE METHODS AND MEANS TO COMPLY WITH CONSTRUCTION SITE SAFETY ARE THE SOLE RESPONSIBILITY OF THE CONTRACTOR.

CATALOG NO. 035241-00
CONTRACT NO. 89690



PROJECT LENGTHS

LENGTH OF IMPROVEMENTS = 1878 FT = 0.35 MI
GROSS LENGTH = 2478 FT = 0.47 MI

DESIGN CLASS : MAJOR COLLECTOR, DESIGN ADT = 1215
DESIGN SPEED = 40 MPH



APPROVED *[Signature]* 20 16

LOCAL AGENCY OFFICIAL

PASSED *[Signature]* February 10th 20 16

DISTRICT FOUR ENGINEER OF LOCAL ROADS & STREETS

Releasing For Bid Based on Limited Review *[Signature]* February 10th 20 16

DEPUTY DIRECTOR OF HIGHWAYS, REGION THREE ENGINEER

STATE OF ILLINOIS
DEPARTMENT OF TRANSPORTATION

PRINTED BY THE AUTHORITY OF THE STATE OF ILLINOIS

PREPARED BY



Rock Island, IL • Bettendorf, IA • Rockford, IL • DeKalb, IL
(309) 788-7644 • (563) 344-0260 • (815) 965-6400 • (815) 748-5543
www.missman.com



I hereby certify that this plan was prepared by me or under my direct personal supervision and that I am a duly licensed Professional Engineer under the laws of the State of Illinois.
[Signature] 01/19/2016
Signature Date
Kirk M. Nelson
License No. 062-057068
My license renewal date is November 30, 2017
Pages or sheets covered by this seal: SHEETS 1 - 15

GENERAL NOTES

1. ALL IMPROVEMENTS SHOWN ON THESE ENGINEERING PLANS SHALL COMPLY WITH THE ILLINOIS DEPARTMENT OF TRANSPORTATION, STANDARD SPECIFICATIONS FOR ROAD AND BRIDGE CONSTRUCTION, LATEST EDITION, AND THE STANDARDS OF THE ILLINOIS DEPARTMENT OF NATURAL RESOURCES, LATEST EDITION.
2. UNDERGROUND FACILITIES, STRUCTURES AND UTILITIES HAVE BEEN PLOTTED FROM AVAILABLE SURVEYS, RECORDS, AND FIELD INVESTIGATION. THEIR LOCATIONS MUST BE CONSIDERED APPROXIMATE ONLY. IT IS POSSIBLE THERE MAY BE OTHERS, THE EXISTENCE OF WHICH PRESENTLY NOT KNOWN OR SHOWN. IT IS THE CONTRACTOR'S RESPONSIBILITY TO DETERMINE THEIR EXISTENCE AND EXACT LOCATION AND TO AVOID DAMAGE THERETO.
3. IT SHALL BE THE RESPONSIBILITY OF THE CONTRACTOR TO PROTECT ALL EXISTING UTILITIES, INCLUDING ANY NOT SHOWN ON THESE DRAWINGS. THE CONTRACTOR SHALL VERIFY ALL EXISTING UTILITIES PRIOR TO CONSTRUCTION AND NOTIFY THE ENGINEER IF ANY CONFLICTS WITH THE DRAWINGS OCCUR. ANY DAMAGE TO EXISTING UTILITIES AND/OR PAVED STREETS CAUSED BY GRADING OPERATIONS SHALL BE REPAIRED AT THE CONTRACTOR'S EXPENSE.
4. THE CONTRACTOR SHALL EXERCISE PROPER CAUTION TO PROTECT THE EXISTING IMPROVEMENTS. THE CONTRACTOR SHALL BE RESPONSIBLE FOR REPAIRING ANY DAMAGE.
5. UNLESS NOTED OTHERWISE, THE REMOVAL & DISPOSAL OF BITUMINOUS SURFACING / SEAL COAT NOT ON A RIGID TYPE BASE REMOVED IN CONJUNCTION WITH THE BASE SHALL BE REMOVED AS EARTH EXCAVATION.

GRADING NOTES

1. ALL ELEVATIONS SHOWN ARE TO FLOWLINE FINISHED GRADE OR TOP OF PAVEMENT UNLESS OTHERWISE STATED.
2. PROVIDE POSITIVE DRAINAGE AT ALL TIMES WITHIN THE CONSTRUCTION AREAS. DO NOT ALLOW WATER TO POND ON PROPERTY.
3. PRIOR TO PLACEMENT OF ANY FILL, THE STRIPPED SITE SHALL BE SCARIFIED TO A DEPTH OF 9 INCHES AND RE-COMPACTED TO DENSITIES SPECIFIED BELOW. ANY UNSUITABLE SOILS FOUND AT THIS TIME SHALL BE DRIED AND RECOMPACTED OR REMOVED IF REQUIRED COMPACTION CANNOT BE OBTAINED.
4. ALL FILL MATERIAL SHALL CONSIST OF APPROVED, SUITABLE SOILS PLACED IN LOOSE LIFTS OF 9 INCHES OR LESS AND COMPACTED TO AT LEAST 95% OF THE MATERIAL'S MAXIMUM STANDARD PROCTOR DRY DENSITY (ASTM D-698). THE COMPACTION WILL BE FIELD TESTED BY A SOILS ENGINEERING CONSULTANT REPRESENTING THE OWNER.
5. PROJECT WILL BE COVERED BY A GENERAL PERMIT REGULATING RUNOFF FROM CONSTRUCTION SITES. IT IS THE CONTRACTOR'S RESPONSIBILITY TO PERFORM THE REQUIRED MONITORING, INSPECTION AND MAINTENANCE AS REQUIRED BY THE PERMIT.

EROSION CONTROL NOTES

1. CONSTRUCTION ENTRANCE SHALL BE MAINTAINED TO PREVENT OFF-SITE TRACKING OF SEDIMENT ONTO PUBLIC ROADWAYS. ANY SEDIMENT DEPOSITED ON PUBLIC ROADS SHALL BE REMOVED BY SHOVELING OR STREET CLEANING BEFORE THE END OF EACH WORKING DAY.
2. WATER PUMPED DURING CONSTRUCTION OPERATIONS SHALL BE FILTERED.
3. ONCE CONSTRUCTION HAS BEEN COMPLETED, OR TEMPORARILY SUSPENDED FOR LONGER THAN 21 DAYS (SUCH AS WINTER SHUTDOWN), THE CONTRACTOR SHALL SEED ALL AREAS DISTURBED WITHIN 14 DAYS OF THE LAST DISTURBANCE. EROSION CONTROL DEVICES SHALL REMAIN IN PLACE AND BE MAINTAINED UNTIL THE CONTRACTOR ESTABLISHES A GOOD STAND OF GRASS OF UNIFORM COLOR AND DENSITY TO THE SATISFACTION OF THE ENGINEER.
4. CONTRACTOR SHALL ADHERE TO THE ILLINOIS CONSTRUCTION SITE EROSION CONTROL MANUAL.
5. ALL EROSION CONTROL MEASURES MUST BE INSTALLED (WHERE POSSIBLE) PRIOR TO THE COMMENCEMENT OF ANY EARTH DISTURBING OPERATIONS. THE REMAINING EROSION CONTROL MEASURES SHALL BE INSTALLED AS SOON AS REASONABLY POSSIBLE AFTER GRADING OPERATIONS BEGIN. WHERE THE PRESENCE OF SILT FENCE WILL INTERFERE WITH ACTIVITIES, DIVERSION DITCHES AND SMALL TEMPORARY SEDIMENT TRAPS SHALL BE UTILIZED UNTIL SILT FENCE OR OTHER MEASURES MAY BE INSTALLED AND VEGETATION ESTABLISHED.
6. EROSION CONTROL MEASURES SHALL BE INSPECTED WEEKLY AND AFTER EACH PRECIPITATION EVENT AND REPLACED OR REPAIRED AS NECESSARY.
7. SILT FENCE SHALL BE CLEANED OR REPLACED WHEN SILT BUILDS UP TO WITHIN ONE FOOT OF THE TOP OF THE SILT FENCE.
8. PROJECT WILL BE COVERED BY A GENERAL PERMIT REGULATING RUNOFF FROM CONSTRUCTION SITES. IT IS THE CONTRACTOR'S RESPONSIBILITY TO PERFORM THE REQUIRED MONITORING, INSPECTION AND MAINTENANCE AS REQUIRED BY THE PERMIT.
9. CONCRETE WASHOUT DEBRIS SHALL BE HAULED OFF-SITE. WASHOUT SHALL BE FILLED IN AND SEEDED.
10. ALL AREAS DISTURBED BEYOND LIMITS SHOWN SHALL BE SEEDED WITH ADJACENT SEED MIXTURE OR IN-KIND.

DISTRICT 4 GENERAL NOTES

ENVIRONMENTAL REVIEWS

PRIOR TO THE USE OF ANY PROPOSED BORROW AREAS, USE AREAS (TEMPORARY ACCESS ROADS, DETOURS, RUN-AROUNDS, ETC.) AND/OR WASTE AREAS, THE CONTRACTOR SHALL FILE THE REQUIRED ENVIRONMENTAL RESOURCE REQUEST SURVEYS ACCORDING TO SECTION 107.22 OF THE STANDARD SPECIFICATIONS. THESE SURVEYS ARE REQUIRED IN ORDER FOR THE DEPARTMENT TO CONDUCT CULTURAL AND BIOLOGICAL RESOURCE SURVEYS FOR THE PROPOSED SITE.

PRIOR TO ANY WASTE MATERIALS BEING REMOVED FROM THE CONSTRUCTION SITE THE REQUIRED ENVIRONMENTAL RESOURCE SURVEYS WILL NEED TO BE OBTAINED AND FILED BY THE CONTRACTOR. EXCESS WASTE PRODUCTS REMOVED FROM THE CONSTRUCTION SITE SHALL BE DISPOSED OF AS IN SECTION 202.03 OF THE STANDARD SPECIFICATIONS.

ANY PROTRUDING METAL BARS SHALL BE REMOVED PRIOR TO THE DISPOSAL OF BROKEN CONCRETE AT APPROVED DISPOSAL SITES.

THE REQUIRED ENVIRONMENTAL RESOURCE DOCUMENTATION SHALL INCLUDE THE FOLLOWING:

- BDE FORM 2289 (CULTURAL AND NATURAL RESOURCE REVIEW OF BORROW AREAS)
- BDE FORM 2290 (WASTE/USE AREA REVIEW)
- A LOCATION MAP SHOWING THE SIZE LIMITS AND LOCATION OF THE USE AREA
- COLOR PHOTOGRAPHS DEPICTING THE USE AREA
- BORROW AREA ENTRY AGREEMENT FORM - D4 P10101

PLEASE NOTE THAT A MINIMUM OF FOUR WEEKS SHALL BE ALLOWED FOR THE DISTRICT TO OBTAIN THE REQUIRED WASTE SITE ENVIRONMENTAL CLEARANCES AND FIVE WEEKS FOR THE REQUIRED BORROW SITE ENVIRONMENTAL CLEARANCES.

ACCESS MUST BE MAINTAINED TO ALL EXISTING PROPERTIES DURING CONSTRUCTION, UNLESS ARRANGEMENTS ARE MADE IN WRITING BY THE CONTRACTOR WITH THE PROPERTY OWNERS WITH A COPY TO THE ENGINEER FOR SHORT TERM CLOSURES.

ALL BORROW / WASTE USE SITES MUST BE APPROVED BY THE DEPARTMENT PRIOR TO REMOVING ANY MATERIAL FROM THE PROJECT OR INITIATING ANY EARTHWORK ACTIVITIES, INCLUDING TEMPORARY STOCKPILING OUTSIDE THE LIMITS OF CONSTRUCTION.

ALL SAW CUTS SHALL BE CONSIDERED INCLUDED IN THE UNIT PRICE OF THE ASSOCIATED REMOVAL ITEM.

ADD THE FOLLOWING SENTENCE TO THE END OF PARAGRAPH 670.02 (i) AND 670.02 (e):

ALL OF THE TELEPHONE LINES PROVIDED SHALL HAVE UNPUBLISHED NUMNERS

COMMITMENTS

1. APPROVAL FROM THE ILLINOIS D.O.T. DETOUR COMMITTEE WILL BE OBTAINED PRIOR TO PROJECT GOING TO LETTING.

MIXTURE REQUIREMENTS

MIXTURE USE:	HMA SURFACE COURSE
AC/PG:	PG 64-22
AIR VOIDS:	4.0% @ N=50
MIXTURE COMPOSITION:	IL 9.5
FRICTION AGGREGATE:	MIX "C"
QUALITY MANAGEMENT PROGRAM:	QC/QA

HORIZONTAL CONTROL - NAD 83

POINT #	NORTHING	EASTING	DESCRIPTION
1	1552240.0898	2165674.9342	#5 REBAR
2	1552741.2560	2165645.9550	#5 REBAR
3	1553288.7150	2165664.2240	10" SPIKE
4	1553784.0432	2165645.5851	#5 REBAR
5	1554202.6398	2165663.8097	10" SPIKE
6	1554819.5830	2165769.9639	#5 REBAR
7	1553791.9988	2165365.4257	10" SPIKE
8	1555086.9676	2165712.3548	10" SPIKE

VERTICAL DATUM

	DESCRIPTION	ELEVATION
TBM-1	TOP BOLT ON F.H. ON W. SIDE OF N. 6TH ST., @ N.E. COR. OF FARMLAND BLDG.	751.51
TBM-2	MAGNAIL IN E. FACE OF P.P., W. SIDE OF N. 6TH ST., 4TH P.P. N. OF FARMLAND BLDG.	750.19
TBM-3	MAGNAIL IN E. FACE OF P.P., W. SIDE OF N. 6TH ST., 9TH P.P. S. OF 210TH AVE.	749.58
TBM-4	BOLT IN WORD "MUELLER" ON F.H. WEST SIDE OF N. 6TH ST. S.E. COR. OF PRARIE POINTE SUBDIVISION.	750.81
TBM-5	60d NAIL IN E. FACE OF P.P., W. SIDE OF N. 6TH ST., 5TH P.P. S. OF 210TH AVE.	747.05
TBM-6	CUT "X" ON THE E. SIDE OF THE S. LIFT STATION STRUCTURE ON W. SIDE OF N. 6TH ST.	745.12
TBM-7	PK NAIL IN EAST FACE OF P.P., W. SIDE OF N. 6TH ST., 1ST P.P. S. OF 210TH AVE.	745.12

IL DESIGN FIRM NO. 184-000843

FILE NAME = A15M026-COVER SHEET.DWG
C-2 NOTES QUANTITIES LEGEND



USER NAME = PAR

PLOT SCALE = NOT TO SCALE

PLOT DATE = 10-21-15

DESIGNED -- KMN

DRAWN -- MJB/PAR

CHECKED -- MJB

DATE -- 01-19-16

REVISED -- -

REVISED -- -

REVISED -- -

REVISED -- -

STATE OF ILLINOIS
DEPARTMENT OF TRANSPORTATION

GENERAL NOTES

SCALE: SHEET NO. 2 OF 15 SHEETS

F.A.U. RTE.	SECTION	COUNTY	TOTAL SHEETS	SHEET NO.
6874	14-0079-00-PV	WARREN	15	2
				CONTRACT NO. 89690
ILLINOIS FED. AID PROJECT				

SUMMARY OF QUANTITIES

ITEM #	CODE NO.	ITEM	UNIT	TOTAL QUANTITY	CONSTRUCTION CODE	
					80% FED 20% STATE	100% LOCAL FUNDING
1	20200100	EARTH EXCAVATION	CU YD	610	610	
2	21001000	GEOTECHNICAL FABRIC FOR GROUND STABILIZATION	SQ YD	3,000	3,000	
3	25000200	SEEDING, CLASS 2	ACRE	0.25	0.25	
4	25000400	NITROGEN FERTILIZER NUTRIENT	POUND	25	25	
5	25000500	PHOSPHORUS FERTILIZER NUTRIENT	POUND	25	25	
6	25000600	POTASSIUM FERTILIZER NUTRIENT	POUND	25	25	
7	25100115	MULCH, METHOD 2	ACRE	0.25	0.25	
8	28000305	TEMPORARY DITCH CHECKS	FOOT	50	50	
9	28000400	PERIMETER EROSION BARRIER	FOOT	1732	1732	
10	35100500	AGGREGATE BASE COURSE, TYPE A 6"	SQ YD	2,276	2,276	
11	35101100	AGGREGATE BASE COURSE, TYPE A 12"	SQ YD	28	28	
12	40200500	AGGREGATE SURFACE COURSE, TYPE A 6"	SQ YD	21	21	
13	40201000	AGGREGATE FOR TEMPORARY ACCESS	TON	60	60	
14	40600285	POLYMERIZED BITUMINOUS MATERIALS (PRIME COAT)	POUND	224	224	
15	40603310	HOT-MIX ASPHALT SURFACE COURSE, MIX "C", N50	TON	31.5	31.5	
16	42000501	PORTLAND CEMENT CONCRETE PAVEMENT, 10" (JOINTED)	SQ YD	2,050	2,050	
17	42300400	PORTLAND CEMENT CONCRETE DRIVEWAY PAVEMENT, 8 INCH	SQ YD	47	47	
18	44000200	DRIVEWAY PAVEMENT REMOVAL	SQ YD	83	83	
19	44200970	CLASS B PATCHES, TYPE II, 10 INCH	SQ YD	191.7		191.7
20	44201299	DOWEL BARS 1 1/2"	EACH	202		202
21	44213204	TIE BARS 3/4"	EACH	186		186
22	48100500	AGGREGATE SHOULDER, TYPE A 6"	SQ YD	732	732	
23	60260100	INLETS TO BE ADJUSTED	EACH	1		1
24	67000400	ENGINEER'S FIELD OFFICE, TYPE A	CAL MO	4	4	
25	67100100	MOBILIZATION	L SUM	1	1	
26	70102620	TRAFFIC CONTROL AND PROTECTION, STANDARD 701501	L SUM	1	1	
27	X4401198	HOT-MIX ASPHALT SURFACE REMOVAL, VARIABLE DEPTH	SQ YD	256	256	
28	X6026050	SANITARY MANHOLES TO BE ADJUSTED	EACH	2	2	
29	70101830	TRAFFIC CONTROL AND PROTECTION, STANDARD BLR 21	L SUM	1		1

FILE NAME = A15M026-COVER SHEET.DWG
C-2 NOTES QUANTITIES LEGEND
Missman, Inc.
Professional Engineers & Land Surveyors

USER NAME = PAR	DESIGNED -- KMN	REVISED --
PLOT SCALE = NOT TO SCALE	DRAWN -- MJB/PAR	REVISED --
PLOT DATE = 10-21-15	CHECKED -- MJB	REVISED --
	DATE -- 01-19-16	REVISED --

**STATE OF ILLINOIS
DEPARTMENT OF TRANSPORTATION**

SUMMARY OF QUANTITIES

SCALE: SHEET NO. 3 OF 15 SHEETS

IL DESIGN FIRM NO. 184-000843	
F.A.U. RTE. 6874	SECTION 14-0079-00-PV
COUNTY WARREN	TOTAL SHEETS 15
	SHEET NO. 3
CONTRACT NO. 89690	
ILLINOIS FED. AID PROJECT	

PATCHING SCHEDULE						
LOCATION				CLASS B PATCHES, TYPE II, 10"		
STATION	RT / LT	WIDTH (FT)	LENGTH (FT)	AREA (SQ YD) 44200970	DOWEL BARS 1 1/2" (EACH) 44201299	TIE BARS 3/4" (EACH) 44213204
10+57	RT	15.5	8	13.8	12	10
10+80	LT	15.5	6	10.3	12	10
11+06	RT	15.5	6	10.3	12	10
13+32	RT	15.5	6	10.3	12	10
15+50	RT	3	9	3.0		
15+80	RT	15.5	8	13.8	12	10
16+04	RT	15.5	6	10.3	12	10
16+54	RT	15.5	6	10.3	10	10
17+55	LT	15.5	6	10.3	12	10
17+68	both	30	4	13.3	20	20
17+80	both	30	4	13.3	20	20
18+33	LT	15.5	20	34.4	12	10
18+53	both	29	6	19.3	28	28
19+32	both	28	6	18.7	28	28
TOTALS:				191.7	202	186

PCC PAVEMENT							
Direction	STATION TO STATION		WIDTH (FT)	LENGTH (FT)	10" PCC	8" PCC	
	AREA (SY)	AREA (SY)					
N. 6th St. - NB & SB	20+09.32	27+78.00	24	768.7	2049.8		
Driveway	27+20.00	27+62.00				47.3	
TOTALS:						2,050	47

HMA SCHEDULE						
Direction	STATION TO STATION		WIDTH (FT)	LENGTH (FT)	HMA MIX "C" (TONS)	PRIME COAT (POUNDS)
NB & SB	27+78.00	28+78.00	24 to 21	100	27	213
SB	27+78.00	28+78.00	3 ft taper	100	4	11
TOTALS:					31.5	224

AGGREGATE SHOULDERS, TYPE A 6"					
Direction	STATION TO STATION		WIDTH (FT)	LENGTH (FT)	AREA (SY)
SB	20+09.32	27+20.00	4	710.7	316
SB	27+60.00	27+78.00	4	18.0	8
SB	27+78.00	28+78.00	3	100.0	33
NB	20+09.32	27+78.00	4	768.7	342
NB	27+78.00	28+78.00	3	100.0	33
TOTALS:					732

REMOVAL SCHEDULE						
Direction	STATION TO STATION		Width (FT)	Length (FT)	PCC DRIVEWAY REMOVAL	HMA SURFACE VAR. DEPTH
	Area (SY)	Area (SY)				
N. 6TH ST - LT	27+10.00	27+73.00	13	24 & varies	83	
N. 6TH ST - NB & SB	27+78.00	28+78.00	26 to 23	varies		256

SEEDING SCHEDULE						
STATION TO STATION	RT/LT	SEEDING, CLASS 2 (ACRE)	NUTRIENTS (POUND)			MUCHING, METHOD 2 (ACRE)
			NITROGEN	PHOSPHORUS	POTASSIUM	
20+09 to 27+20	LT	0.12	10	10	10	0.12
27+53 to 27+88	LT	0.01	1	1	1	0.01
28+14 to 28+78	LT	0.01	1	1	1	0.01
20+09 to 28+78	RT	0.14	12	12	12	0.14
TOTALS:		0.27	25	25	25	0.27

NOTE: QUANTITIES MAY NOT MATCH SUMMARY TOTALS DUE TO ROUNDING GUIDELINES.

DRAINAGE SCHEDULE			
STATION	RT/LT OFFSET	INLET TO BE ADJUSTED (EA)	SAN. M.H. TO BE ADJUSTED (EA)
15+54.66	13' RT	1	
22+31.64	8.5' LT		1
26+30.25	1.1' RT		1
TOTALS:		1	2

North 6th Street - Earthwork Table											
Station	Cut Area (Sq.ft.)	Cut Volume (Cu.yd.)	Reusable Volume (Cu.yd.)	Fill Area (Sq.ft.)	Fill Volume (Cu.yd.)	Fill Volume w/ Shrinkage (CY)	Cum. Cut Vol. (Cu.yd.)	Cum. Reusable Vol. (Cu.yd.)	Cum. Fill Vol. (Cu.yd.)	Cum. Fill Vol. w/ Shrinkage (Cu.yd.)	Earth Excavation (Cu. Yd.)
20+00.000	5.3	0	0	0	0	0.00	0	0	0	0.00	0.00
20+09.320	34.15	6.81	6.81	0.12	0.02	0.03	7.51	7.51	0.02	0.03	7.49
20+50.000	38.63	54.83	54.83	0.09	0.16	0.20	65.42	65.42	0.18	0.23	65.20
21+00.000	29.48	63.07	63.07	0.96	0.97	1.21	128.46	128.46	1.15	1.44	127.02
21+50.000	27.02	52.32	52.32	2.13	2.86	3.58	180.75	180.75	3.65	4.56	176.19
22+00.000	24.72	47.91	47.91	3.4	5.12	6.40	228.65	228.65	6.81	8.51	220.14
22+50.000	29.61	50.3	50.3	1.87	4.88	6.10	277.04	277.04	10.2	12.75	264.29
23+00.000	22.07	47.85	47.85	5.97	7.25	9.06	323.04	323.04	16.9	21.13	301.92
23+50.000	20.29	39.22	39.22	6.3	11.35	14.19	362.47	362.47	27.52	34.40	328.07
24+00.000	17.25	34.77	34.77	7.48	12.76	15.95	397.59	397.59	40.04	50.05	347.54
24+50.000	13.2	28.2	28.2	9.76	15.97	19.96	426.28	426.28	55.68	69.60	356.68
25+00.000	13.58	24.8	24.8	8.6	17	21.25	451.71	451.71	72.28	90.35	361.36
25+50.000	19.48	30.61	30.61	6.94	14.38	17.98	483.04	483.04	86.24	107.80	375.24
26+00.000	20.16	36.7	36.7	5.22	11.26	14.08	520.38	520.38	97.14	121.43	398.96
26+50.000	30.19	46.61	46.61	3.94	8.48	10.60	567.5	567.5	105.39	131.74	435.76
27+00.000	33.66	59.12	59.12	0.62	4.23	5.29	627	627	109.53	136.91	490.09
27+40.590	40.07	55.42	55.42	0.1	0.54	0.68	683.21	683.21	110.06	137.58	545.64
27+50.000	41.8	14.27	14.27	0.07	0.03	0.04	697.75	697.75	110.08	137.60	560.15
27+77.940	15.92	29.86	29.86	1.41	0.77	0.96	727.97	727.97	110.85	138.56	589.41
28+00.000	8.81	10.1	10.1	2.37	1.54	1.93	738.07	738.07	112.4	140.50	597.57
28+50.000	8.32	15.85	15.85	3.2	5.15	6.44	753.93	753.93	117.55	146.94	606.99
28+78.000	3.71	6.24	6.24	2.26	2.83	3.54	760.16	760.16	120.38	150.48	609.69
TOTAL:											610

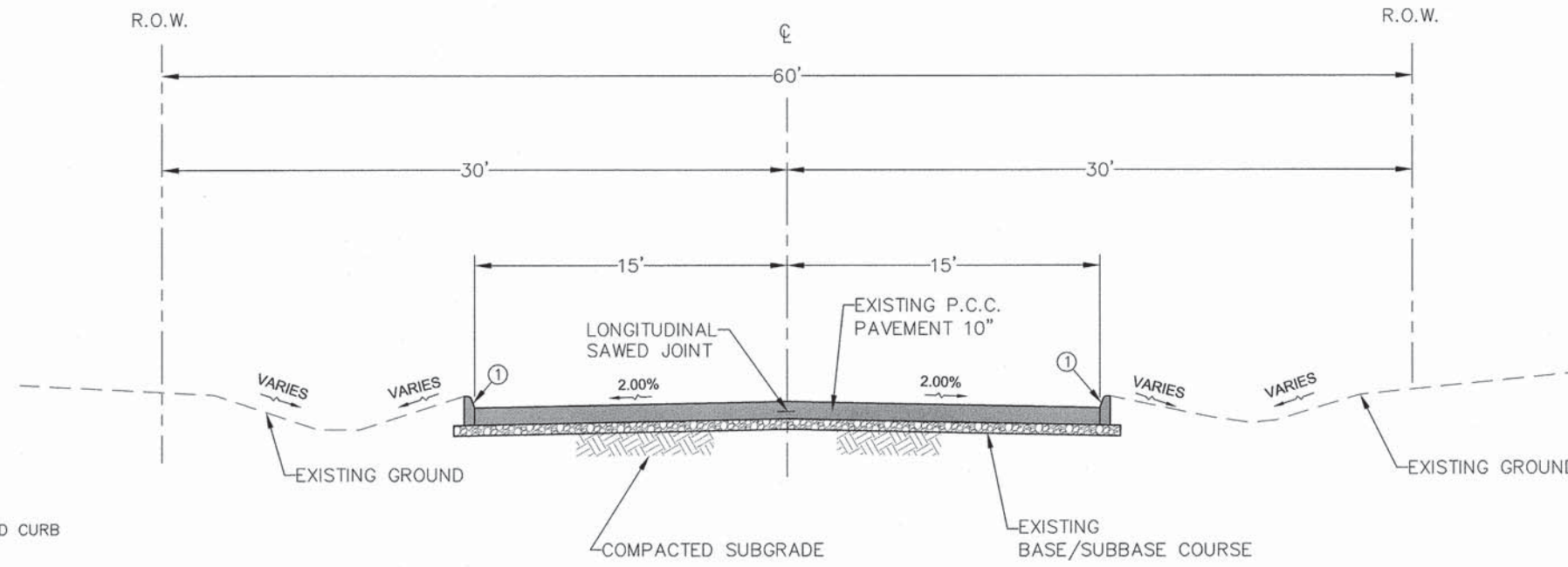
NOTE: UNLESS NOTED OTHERWISE, THE REMOVAL & DISPOSAL OF BITUMINOUS SURFACING / SEAL COAT NOT ON A RIGID TYPE BASE REMOVED IN CONJUNCTION WITH THE BASE SHALL BE REMOVED AS EARTH EXCAVATION.

GEOTECHNICAL FABRIC						
LOCATION	Direction	STATION TO STATION		WIDTH (FT)	LENGTH (FT)	AREA (SY)
6" AGGREGATE SHOULDERS	SB	20+09.32	27+19.00	4	709.7	315.4
	SB	27+61.00	27+78.00	4	17.0	7.6
	SB	27+78.00	28+78.00	3	100.0	33.3
	NB	20+09.32	27+78.00	4	768.7	341.6
	NB	27+78.00	28+78.00	3	100.0	33.3
AGGREGATE BASE COURSE - PCC PAVEMENT	NB & SB	20+09.32	27+78.00	26	768.7	2,220.6
8" PCC DRIVEWAY	LT	27+10.00	27+62.00	varies	varies	47.8
TOTAL:						3,000

AGGREGATE SCHEDULE					
LOCATION STATION TO STATION	OFFSET RT/LT	AGG. BASE COURSE TYPE A 6" (SQ YD)	AGG. BASE COURSE TYPE A 12" (SQ YD)	AGG. SRFC COURSE TYPE A 6" (SQ YD)	AGGREGATE FOR TEMP. ACCESS (TON)
20+09.32 to 27+78.00	N. 6th St. - NB	1110			
20+09.32 to 27+78.01	N. 6th St. - SB	1110			
27+20 to 27+60, driveway	12' LT	56			
27+78.00 to 28+78.00	LT - varies		28		
27+88 to 28+11, driveway	11.5' LT			21	
20+07 to 27+19	LT				60
TOTALS:		2,276	28	21	60

EROSION CONTROL SCHEDULE					
STATION TO STATION	OFFSET RT/LT	PERIM. EROSION BARRIER (FT)	DITCHES CHECKS STATIONS	DITCH CHECK LENGTH (FT)	
				RT	LT
20+00 to 27+19	27' LT	730	19+95	7	7
27+23 to 27+88	27' LT	35	24+00	7	7
28+15 to 28+78	26' LT	62	27+19 (LT)		8
20+00 to 28+92	25' RT	905	28+92	7	7
TOTALS:		1732			50

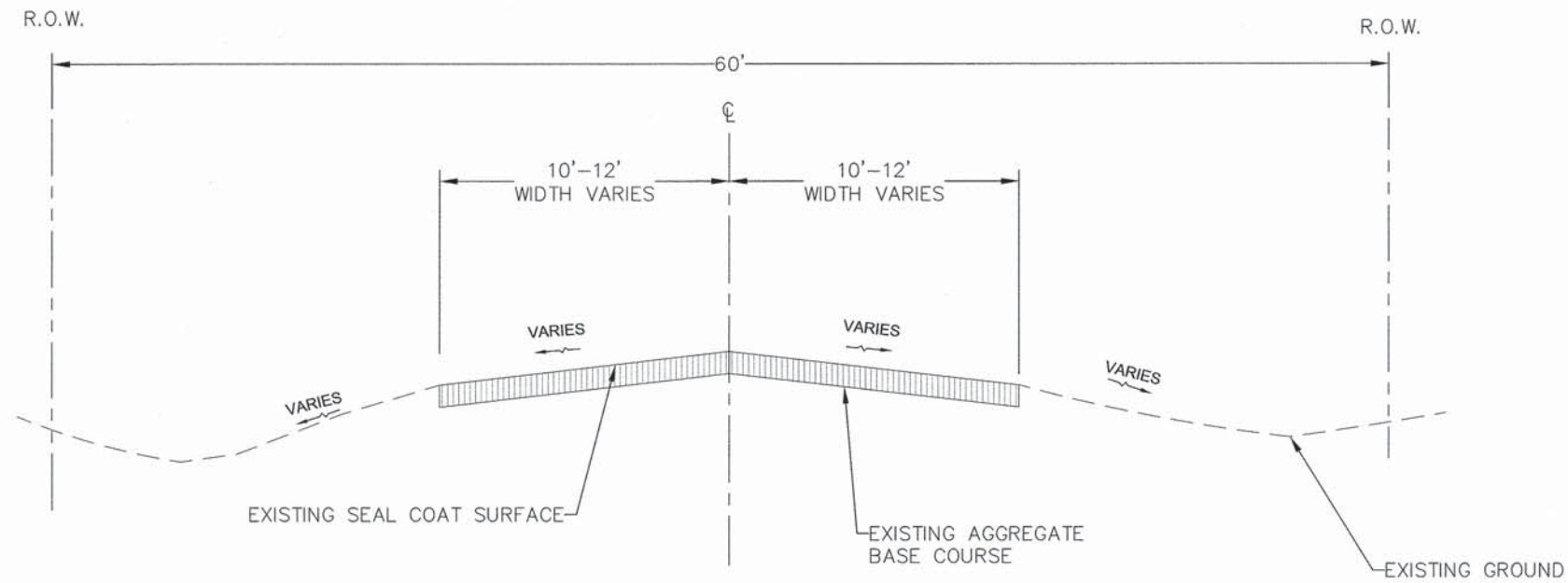
NOTE: LENGTH OF DITCH CHECKS SHALL BE IN CONFORMANCE WITH ARTICLE 280.4(a) OF THE STANDARD SPECIFICATIONS FOR ROAD AND BRIDGE CONSTRUCTION.



NOTE

① = 6 IN. STANDARD CURB

STA.10+00 TO STA.20+09.32



STA.20+09.32 TO STA.28+78

**EXISTING TYPICAL CROSS SECTIONS
N. 6TH STREET**

FILE NAME =
A15M026-COVER SHEET.DWG
C-3 TYPICAL CROSS SECTIONS



USER NAME = PAR

PLOT SCALE = NOT TO SCALE

PLOT DATE = 10-21-15

DESIGNED -- KMN

DRAWN -- MJB/PAR

CHECKED -- MJB

DATE -- 10-21-15

REVISED --

REVISED --

REVISED --

REVISED --

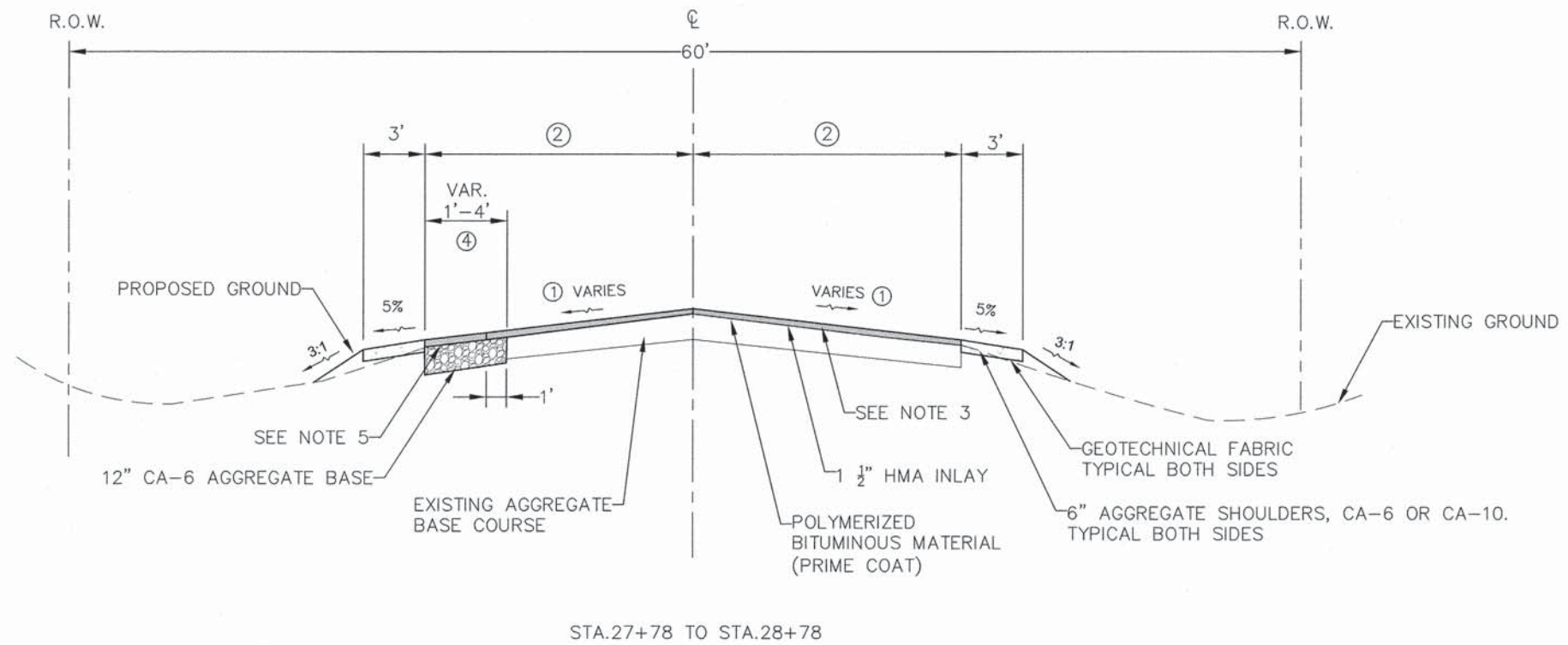
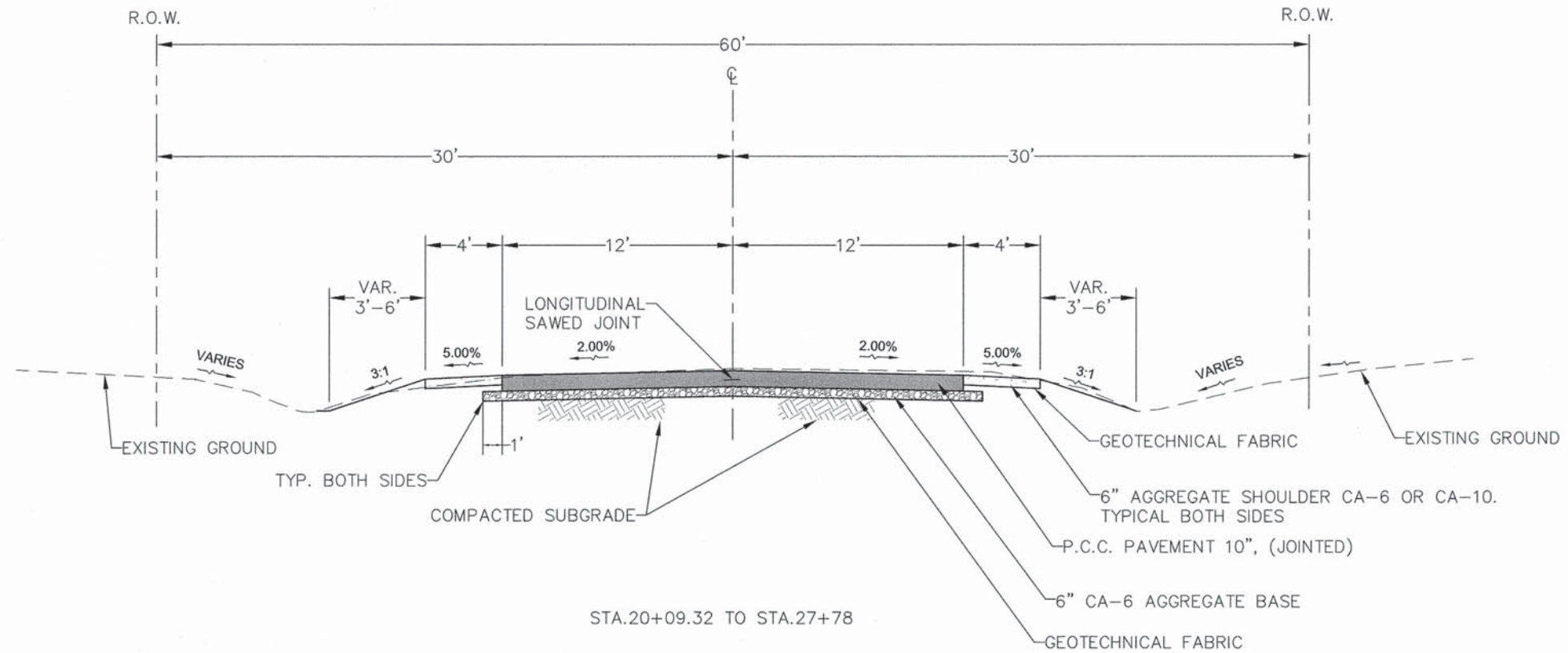
**STATE OF ILLINOIS
DEPARTMENT OF TRANSPORTATION**

EXISTING TYPICAL SECTIONS

SCALE: SHEET NO. 5 OF 15 SHEETS

IL DESIGN FIRM NO. 184-000843

F.A.U. RTE.	SECTION	COUNTY	TOTAL SHEETS	SHEET NO.
6874	14-0079-00-PV	WARREN	15	5
CONTRACT NO. 89690				
ILLINOIS FED. AID PROJECT				



NOTES

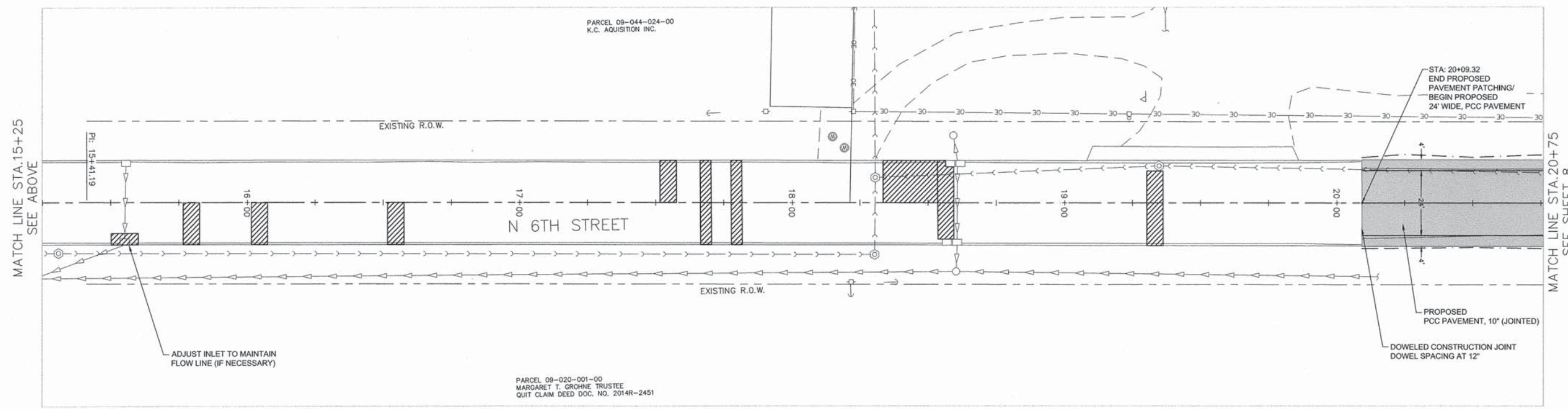
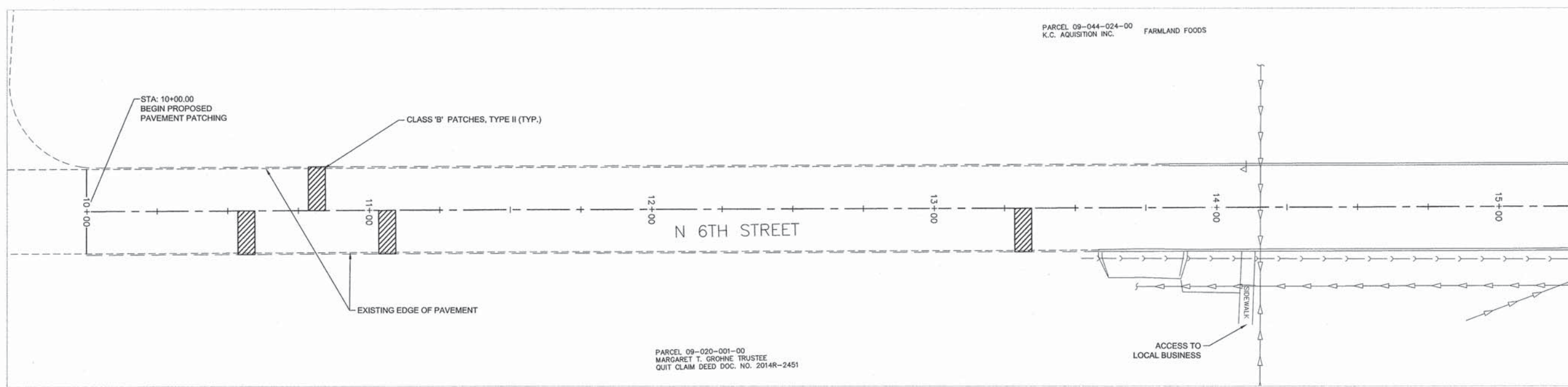
- ① = BEGIN AT STA.27+78 WITH 2% SLOPE, TRANSITION SLOPE TO MEET EXISTING SLOPE AT STA.28+78
- ② = STA.27+78 MATCH PROPOSED PCC PAVMENT, TRANSITION WIDTH TO MEET EXISTING PAVMENT AT STA.28+78
- ③ = HMA SURFACE REMOVAL, VARIABLE DEPTH MILL TO POINT THAT IS 1 1/2" BELOW PROPOSED SURFACE
- ④ = VARIABLE WIDTH PAVEMENT WEDGE BEGINNING AT STA.27+78, TAPER WIDTH TO MEET EXISTING PAVEMENT EDGE AT STA.28+78 REMOVE 1 FT EXISTING PAVEMENT EDGE IN ORDER TO PROVIDE CLEAN SURFACE FOR WIDENING
- ⑤ = PRIME COAT ON AGGREGATE BASE. SEE SPECIAL PROVISIONS FOR MATERIAL TYPES.

**PROPOSED TYPICAL CROSS SECTIONS
N. 6TH STREET**



SCALE: 1" = 20'

 PROPOSED PAVEMENT PATCH, 10"



NOTES:

1. LOCATION OF THE PATCHES ARE APPROXIMATE. THE ACTUAL LOCATIONS AND SIZE SHALL OF THE PATCHES BE DETERMINED IN THE FIELD AT THE TIME OF CONSTRUCTION.
2. PATCHING SHALL INCLUDE REPLACEMENT OF ALL CURBS REMOVED. THE COST FOR PROPOSED CURB REMOVAL AND REPLACEMENT SHALL BE INCLUDED IN THE PATCHES SQUARE YARD CONTRACT UNIT PRICE. THE PROPOSED CURB SHALL BE MEASURED FOR PAYMENT AS PART OF THE PATCH (PER SQUARE YARD).

FILE NAME = A15M026-PLAN AND PROFILE.DWG
C-6 PLAN AND PROFILE

 Missman, Inc.
Professional Engineers & Land Surveyors

USER NAME = PAR

PLOT SCALE = 1"=20'

PLOT DATE = 10-21-15

DESIGNED -- KMN

DRAWN -- MJB/PAR

CHECKED -- MJB

DATE -- 10-21-15

REVISED --

REVISED --

REVISED --

REVISED --

STATE OF ILLINOIS
DEPARTMENT OF TRANSPORTATION

N 6TH STREET PLAN

SCALE: SHEET NO. 7 OF 15 SHEETS

F.A.U. RTE.		SECTION	COUNTY	TOTAL SHEETS	SHEET NO.
6874		14-0079-00-PV	WARREN	15	7
CONTRACT NO. 89690					
ILLINOIS FED. AID PROJECT					

IL DESIGN FIRM NO. 184-000843

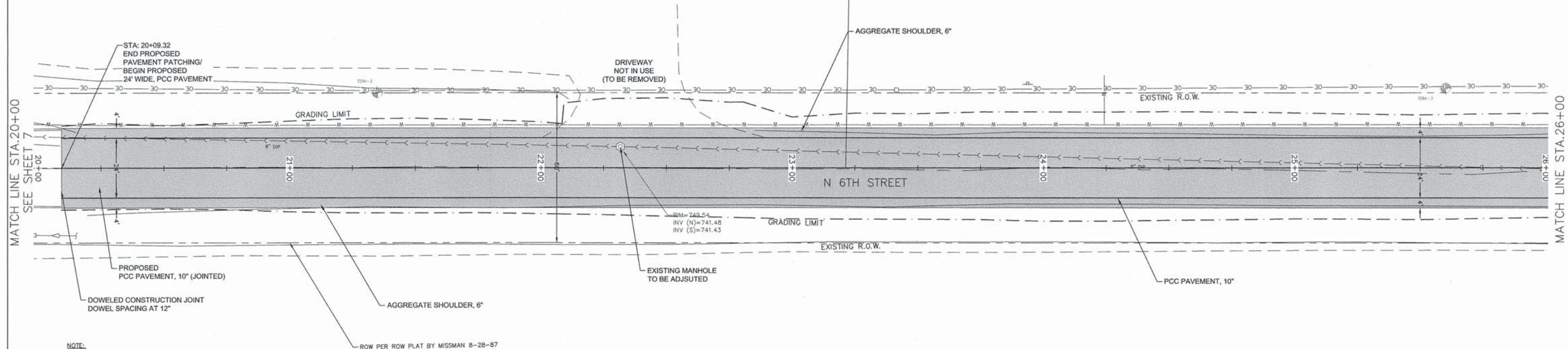


SCALE: 1" = 20'

PARCEL 09-044-097-00
MONMOUTH PROPERTY DEV, LLC
CORPORATION WARRANTY DEED DOC.NO. 2014R-0910

MATCH LINE STA. 20+00
SEE SHEET 7

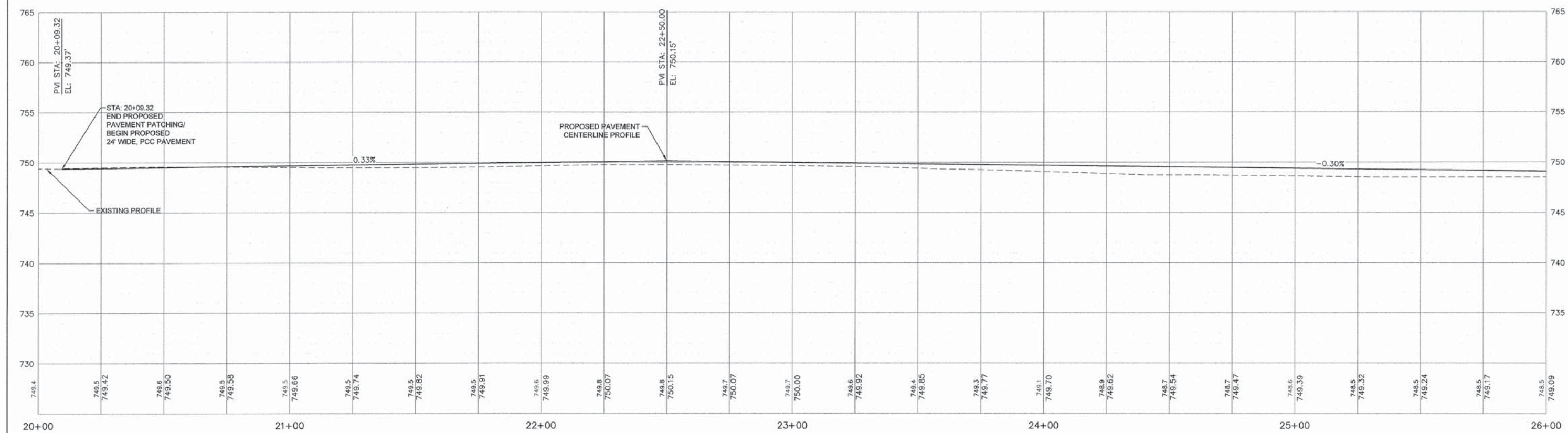
MATCH LINE STA. 26+00



NOTE:
TRANSVERSE JOINT SPACING FOR 10" PCC PAVEMENT AT 15 FT.

ROW PER ROW PLAT BY MISSMAN 8-28-87

PARCEL 09-020-001-00
MARGARET T. GROHNE TRUSTEE
QUIT CLAIM DEED DOC. NO. 2014R-2451



FILE NAME = A15M026-PLAN AND PROFILE.DWG
C-7 PLAN AND PROFILE
Missman, Inc.
Professional Engineers & Land Surveyors

USER NAME = PAR
PLOT SCALE = 1"=20'
PLOT DATE = 10-21-15

DESIGNED - KMN
DRAWN - MJB/PAR
CHECKED - MJB
DATE - 10-21-15

REVISED - -
REVISED - -
REVISED - -
REVISED - -

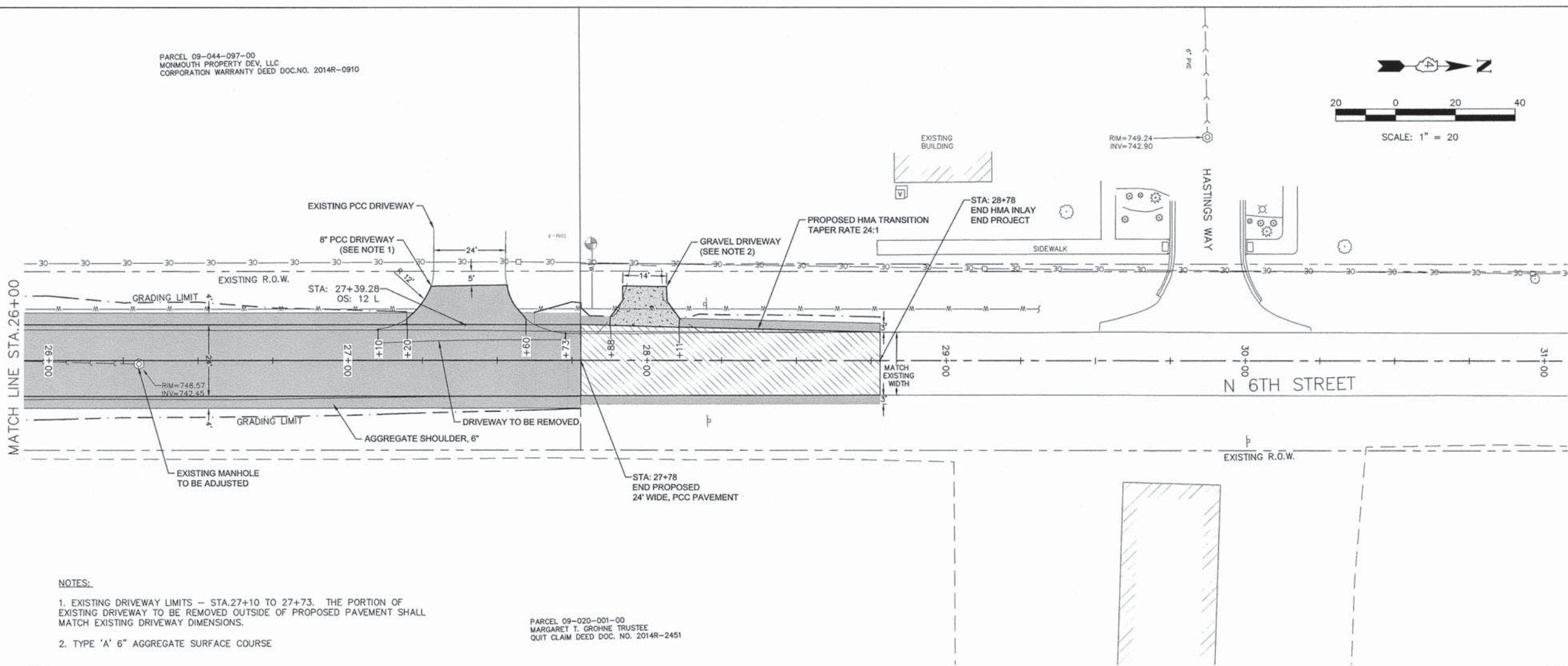
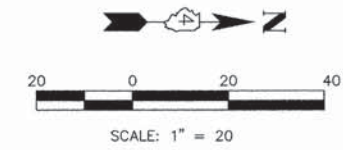
STATE OF ILLINOIS
DEPARTMENT OF TRANSPORTATION

N 6TH STREET PLAN AND PROFILE

SCALE: SHEET NO. 8 OF 15 SHEETS

IL DESIGN FIRM NO. 184-000843				
F.A.U. RTE.	SECTION	COUNTY	TOTAL SHEETS	SHEET NO.
6874	14-0079-00-PV	WARREN	15	8
CONTRACT NO. 89690				
ILLINOIS FED. AID PROJECT				

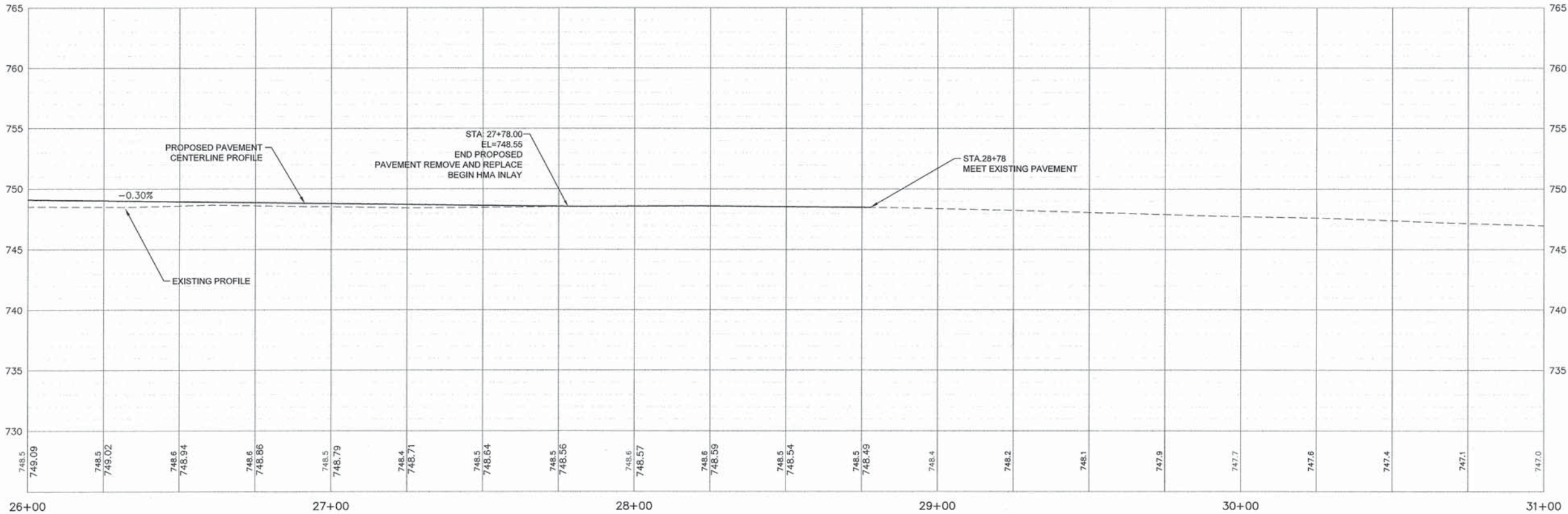
PARCEL 09-044-097-00
 MONMOUTH PROPERTY DEV, LLC
 CORPORATION WARRANTY DEED DOC.NO. 2014R-0910



NOTES:

1. EXISTING DRIVEWAY LIMITS — STA.27+10 TO 27+73. THE PORTION OF EXISTING DRIVEWAY TO BE REMOVED OUTSIDE OF PROPOSED PAVEMENT SHALL MATCH EXISTING DRIVEWAY DIMENSIONS.
2. TYPE 'A' 6" AGGREGATE SURFACE COURSE

PARCEL 09-020-001-00
 MARGARET T. GROHNE TRUSTEE
 QUIT CLAIM DEED DOC. NO. 2014R-2451



FILE NAME = A15M025-PLAN AND PROFILE.DWG
 C-8 PLAN AND PROFILE
 Missman, Inc.
 Professional Engineers & Land Surveyors

USER NAME = PAR
 PLOT SCALE = 1"=20'
 PLOT DATE = 10-21-15

DESIGNED — KMN
 DRAWN — MJB/PAR
 CHECKED — MJB
 DATE — 01-19-16

REVISED —
 REVISED —
 REVISED —
 REVISED —



STATE OF ILLINOIS
 DEPARTMENT OF TRANSPORTATION

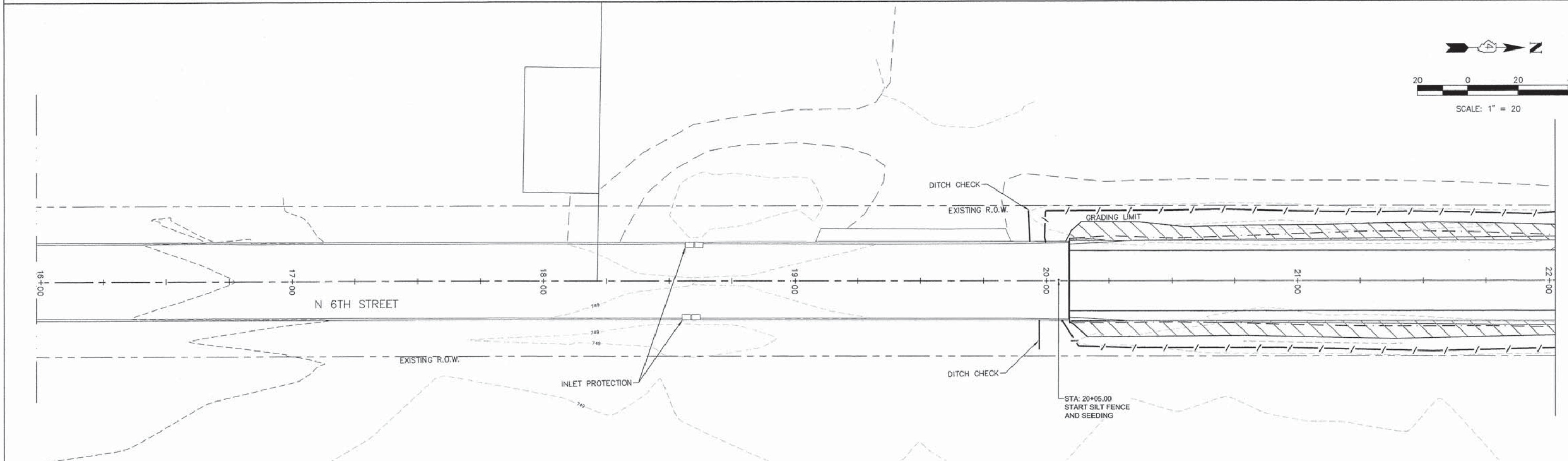
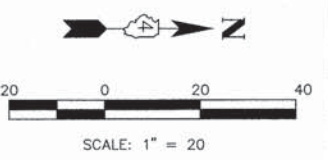
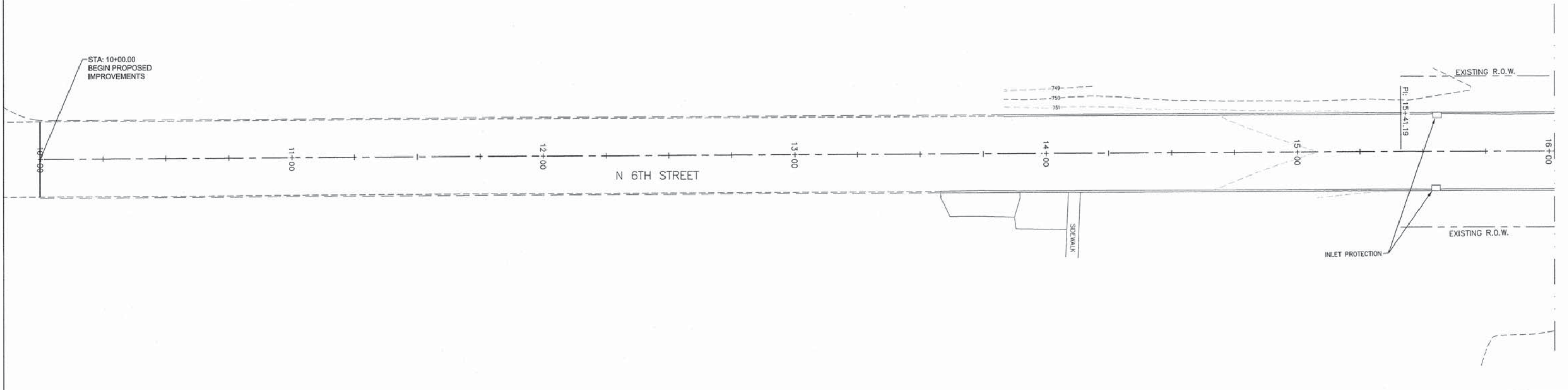
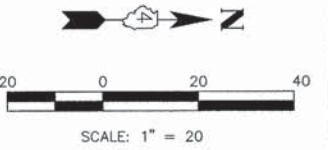
N 6TH STREET PLAN AND PROFILE

SCALE: SHEET NO. 9 OF 15 SHEETS

IL DESIGN FIRM NO. 184-000843			
F.A.U. RTE.	SECTION	COUNTY	TOTAL SHEETS
6874	14-0079-00-PV	WARREN	15
			SHEET NO.
			9
CONTRACT NO. 89690			
ILLINOIS FED. AID PROJECT			

LEGEND

-  PROPOSED PERIMETER EROSION BARRIER
-  PROPOSED PERMANENT SEEDING



FILE NAME = A15M028-PLAN AND PROFILE.DWG
C-6 PLAN AND PROFILE

USER NAME = PAR
PLOT SCALE = 1"=20'
PLOT DATE = 10-21-15

DESIGNED -- KMN
DRAWN -- MJB/PAR
CHECKED -- MJB
DATE -- 10-21-15

REVISED --
REVISED --
REVISED --
REVISED --

**STATE OF ILLINOIS
DEPARTMENT OF TRANSPORTATION**

EROSION & SEDIMENT CONTROL PLAN



SCALE: SHEET NO. 10 OF 15 SHEETS

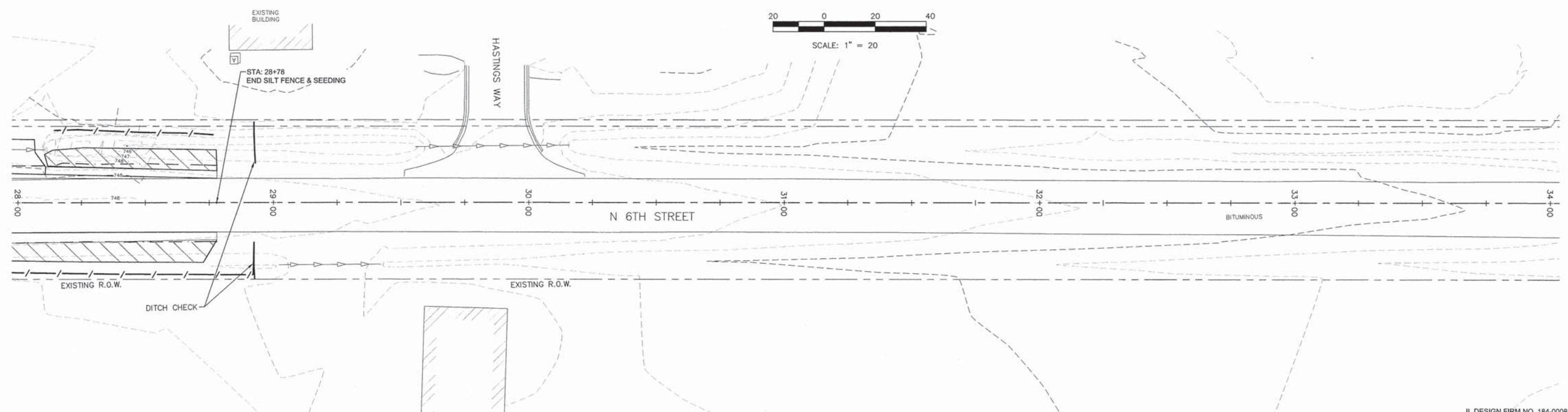
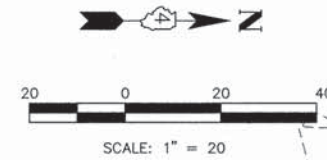
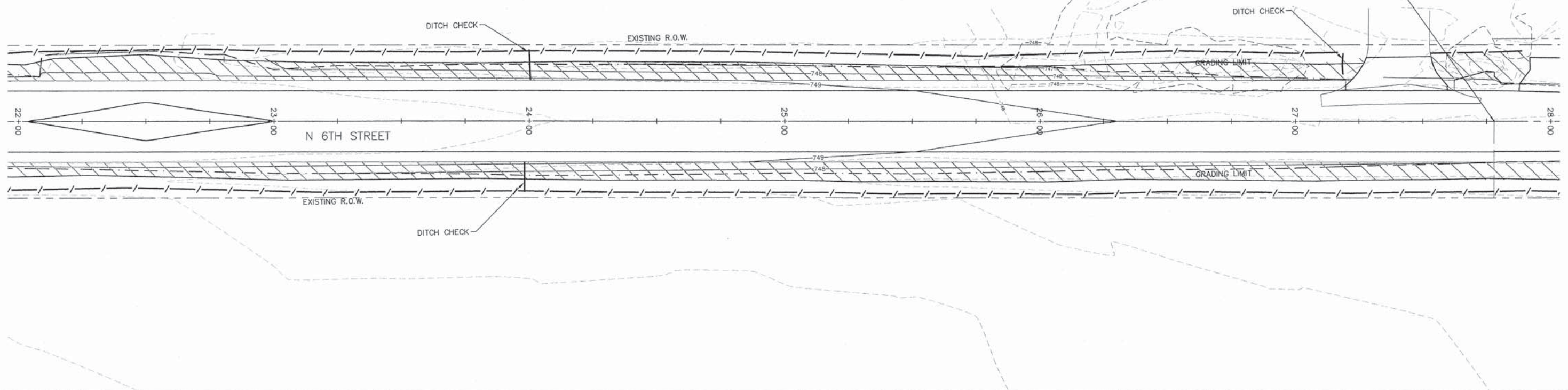
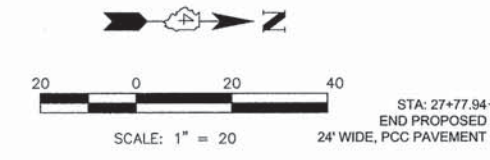
F.A.U. RTE.	SECTION	COUNTY	TOTAL SHEETS	SHEET NO.
6874	14-0079-00-PV	WARREN	15	10
CONTRACT NO. 89690				
ILLINOIS FED. AID PROJECT				

IL DESIGN FIRM NO. 184-000843



LEGEND

-  PROPOSED PERIMETER EROSION BARRIER
-  PROPOSED PERMANENT SEEDING



FILE NAME = A15M026-PLAN AND PROFILE.DWG
C-8 PLAN AND PROFILE
Missman, Inc.
Professional Engineers & Land Surveyors

USER NAME = PAR
PLOT SCALE = 1"=20'
PLOT DATE = 10-21-15

DESIGNED -- KMN
DRAWN -- MJB/PAR
CHECKED -- MJB
DATE -- 10-21-15

REVISED --
REVISED --
REVISED --
REVISED --

**STATE OF ILLINOIS
DEPARTMENT OF TRANSPORTATION**

EROSION & SEDIMENT CONTROL PLAN

SCALE: SHEET NO. 11 OF 15 SHEETS

IL DESIGN FIRM NO. 184-000843				
F.A.U. RTE.	SECTION	COUNTY	TOTAL SHEETS	SHEET NO.
6874	14-0079-00-PV	WARREN	15	11
CONTRACT NO. 89690				
ILLINOIS FED. AID PROJECT				

TRAFFIC CONTROL NOTES

1. THE PORTION OF N. 6TH STREET WITHIN CONSTRUCTION LIMITS WILL BE CLOSED TO TRAFFIC DURING PAVEMENT RECONSTRUCTION. TRAFFIC ACCESSING HASTINGS WAY WILL BE DETOURED NORTH TO 210TH AVE. THEN EAST TO U.S. 67.
2. THE LUMP SUM BID ITEM "TRAFFIC CONTROL, STANDARD X7011830" SHALL INCLUDE ALL COSTS FOR TRAFFIC CONTROL MEASURES DURING CONSTRUCTION FOR THE PROJECT. ALL TRAFFIC CONTROL DEVICES SHALL BE FURNISHED, ERECTED, MAINTAINED AND REMOVED BY THE CONTRACTOR.
3. THE CONTRACTOR SHALL NOTIFY THE ENGINEER AND PROPERTY OWNER(S) ONE (1) WEEK PRIOR TO CHANGES IN TRAFFIC PATTERNS DURING CONSTRUCTION.
4. ALL DETOUR ROUTE SIGNS AND ROAD CLOSURE BARRICADES SHALL BE INSTALLED BY THE CONTRACTOR AND APPROVED BY THE ENGINEER PRIOR TO CLOSING THE ROAD.
5. DETOUR SIGNS PLACED ON STATE ROUTES SHALL HAVE 'N 6TH ST' STREET NAME ATTACHED.
6. PROPOSED SIGN SPACING MAY BE MODIFIED, AS APPROVED BY THE ENGINEER, TO MEET EXISTING FIELD RESTRICTIONS, OR TO PREVENT OBSTRUCTION OF THE MOTORIST'S VIEW OF PERMANENT SIGNING.

PATCHING TRAFFIC CONTROL







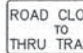

1. TRAFFIC CONTROL DURING PAVEMENT PATCHING WORK SHALL BE IN ACCORDANCE WITH STANDARD ROAD PLAN 701501.
2. SIGNS 'ROAD CONSTRUCTION AHEAD' - W20-103(0)-48, SHALL BE PLACED AT STA.4+00, RT AND STA.25+00, LT.

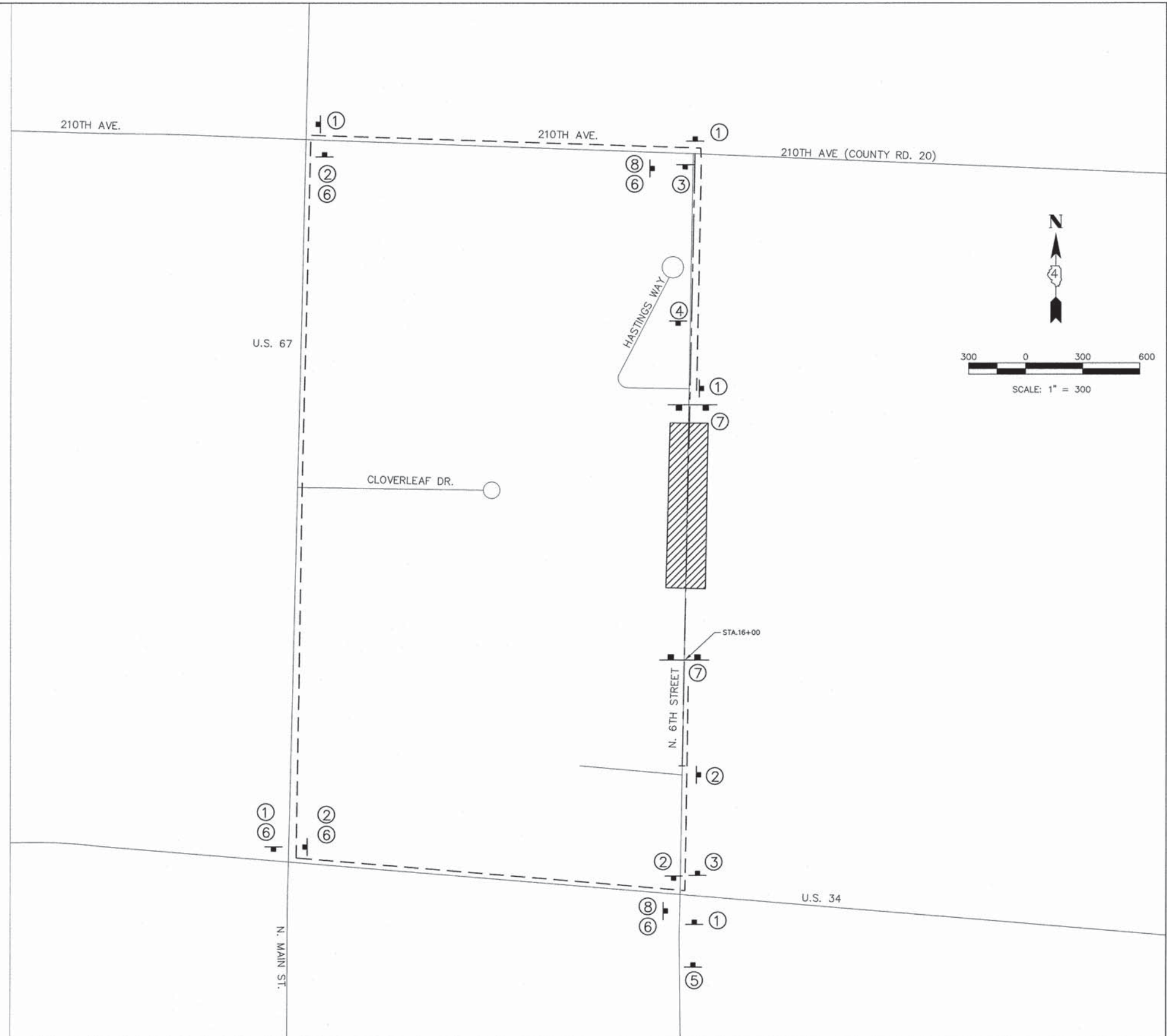
PHASE 1 TRAFFIC CONTROL AND DETOURS

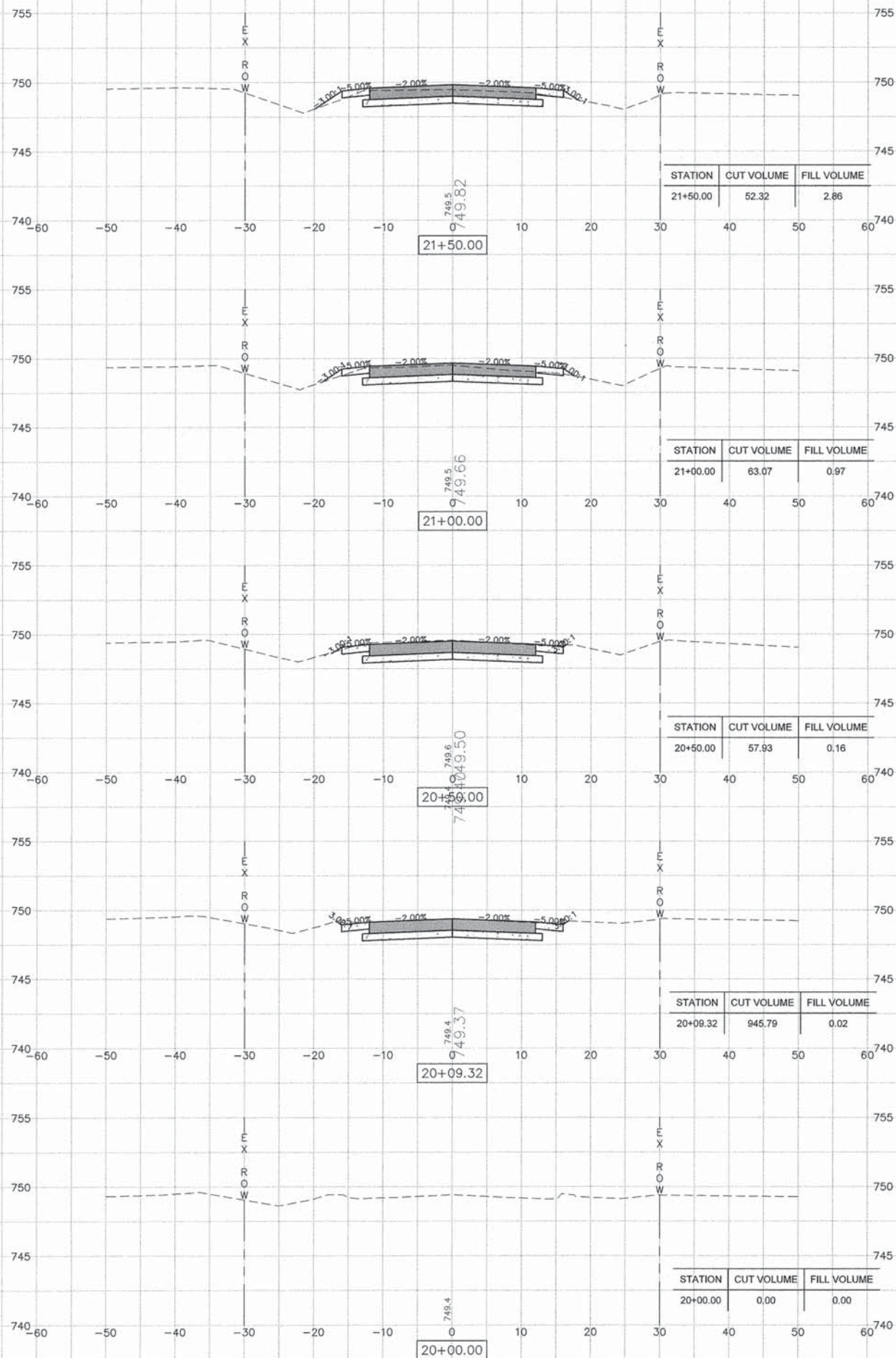
 PHASE 1 WORK AREA

 DETOUR ROUTE

 TY 3 ROAD CLOSED BARRICADE (TC-252)

- ①  M4-9L
30" x 24"
- ②  M4-9R
30" x 24"
- ③  ROAD CLOSED AHEAD
W20-3
48" x 48"
- ④  ROAD CLOSED 500 FT
W20-3
48" x 48"
- ⑤  ROAD CONSTRUCTION AHEAD
W20-1
48" x 48"
- ⑥  N. 6TH ST.
- ⑦  ROAD CLOSED TO THRU TRAFFIC
R11-4
30" x 60"
- ⑧  END DETOUR
M4-8a
24" x 18"





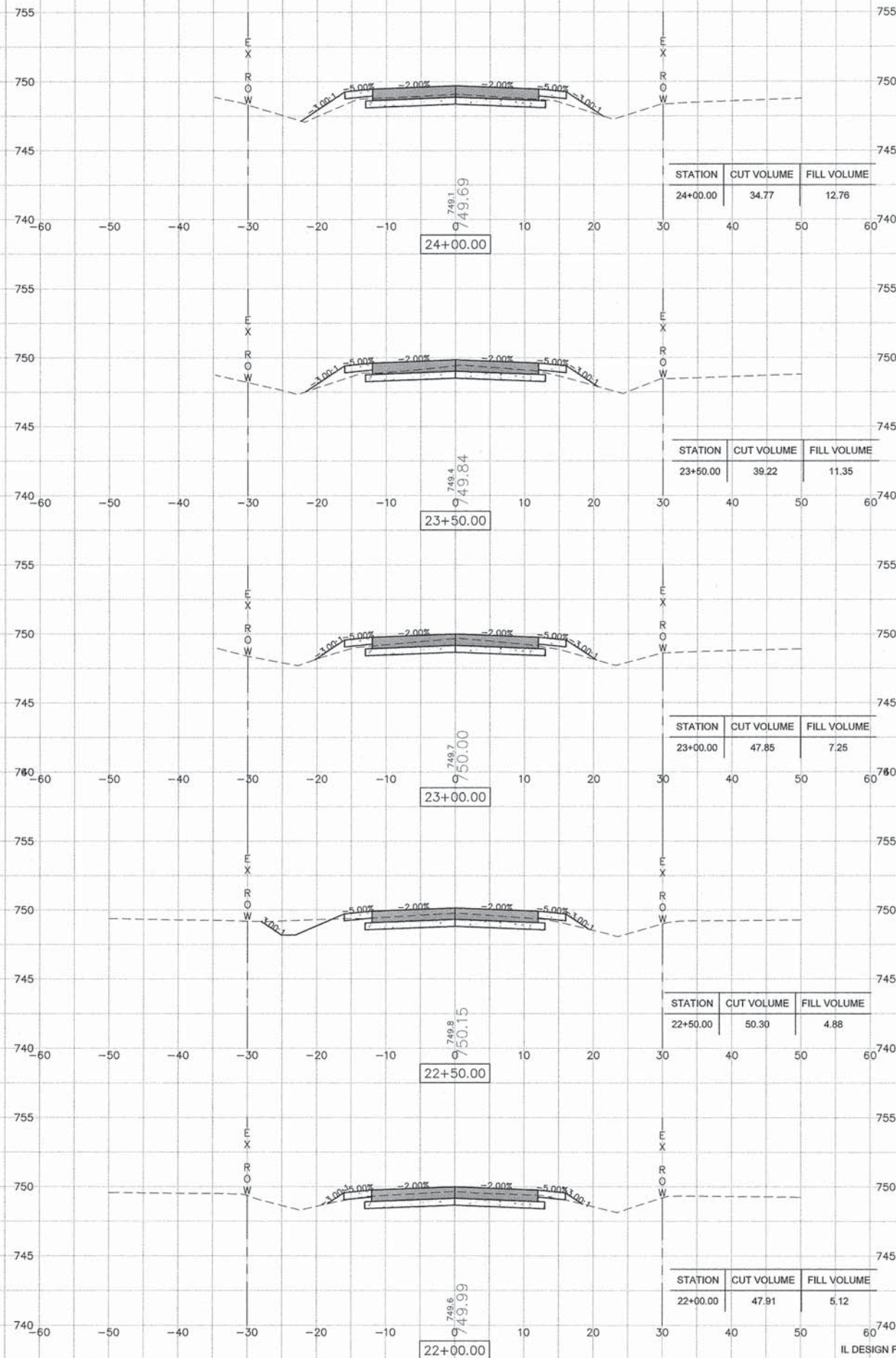
STATION	CUT VOLUME	FILL VOLUME
21+50.00	52.32	2.86

STATION	CUT VOLUME	FILL VOLUME
21+00.00	63.07	0.97

STATION	CUT VOLUME	FILL VOLUME
20+50.00	57.93	0.16

STATION	CUT VOLUME	FILL VOLUME
20+09.32	945.79	0.02

STATION	CUT VOLUME	FILL VOLUME
20+00.00	0.00	0.00



STATION	CUT VOLUME	FILL VOLUME
24+00.00	34.77	12.76

STATION	CUT VOLUME	FILL VOLUME
23+50.00	39.22	11.35

STATION	CUT VOLUME	FILL VOLUME
23+00.00	47.85	7.25

STATION	CUT VOLUME	FILL VOLUME
22+50.00	50.30	4.88

STATION	CUT VOLUME	FILL VOLUME
22+00.00	47.91	5.12

FILE NAME = A15M026-CROSS SECTIONS.DWG
C10-CROSS SECTIONS

USER NAME = PAR
PLOT SCALE = 1"=10' HOR 1"=5' VERT
PLOT DATE = 10-21-15

DESIGNED -- KMN
DRAWN -- MJB/PAR
CHECKED -- MJB
DATE -- 10-21-15

REVISED --
REVISED --
REVISED --
REVISED --

STATE OF ILLINOIS
DEPARTMENT OF TRANSPORTATION

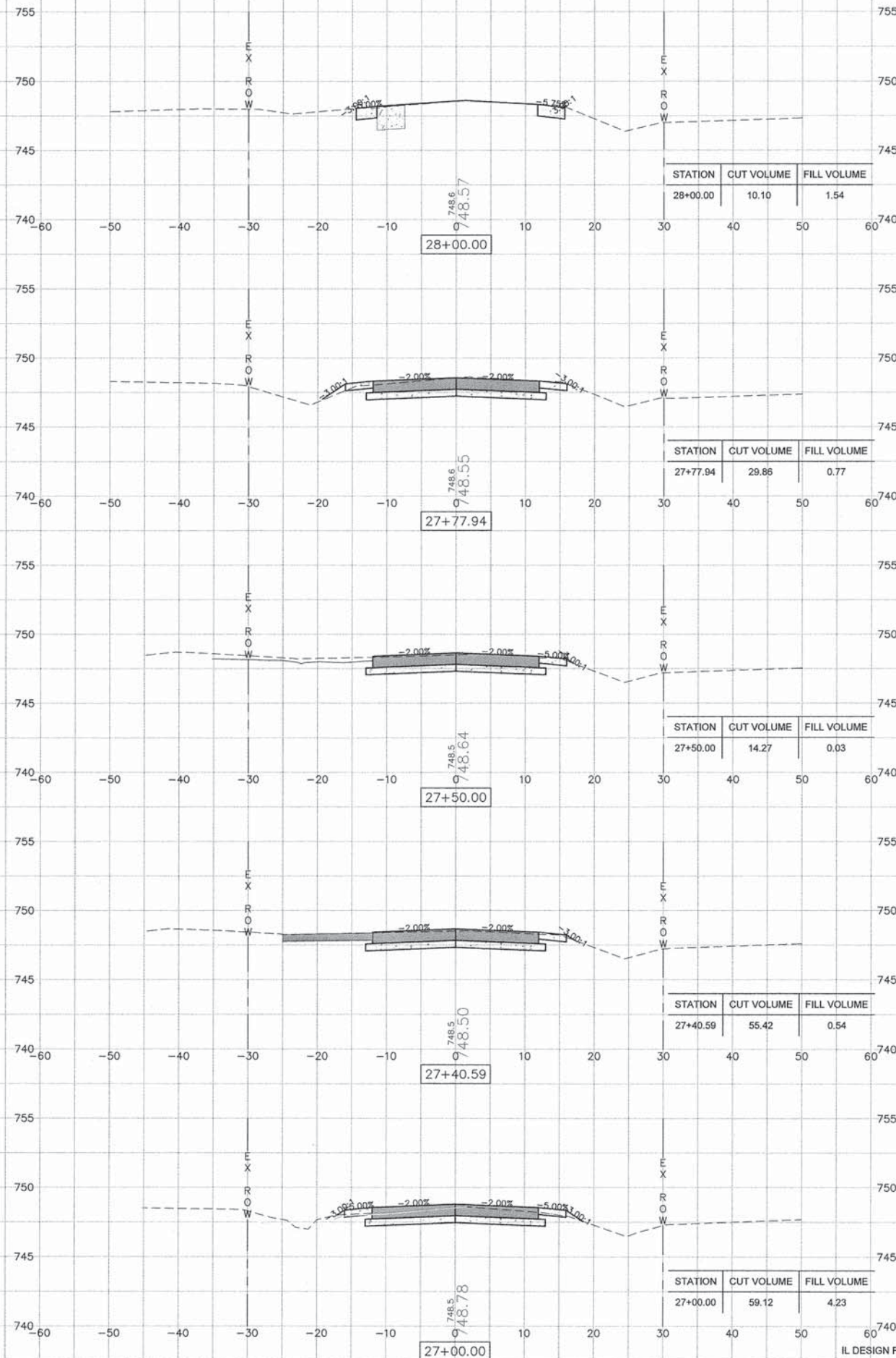
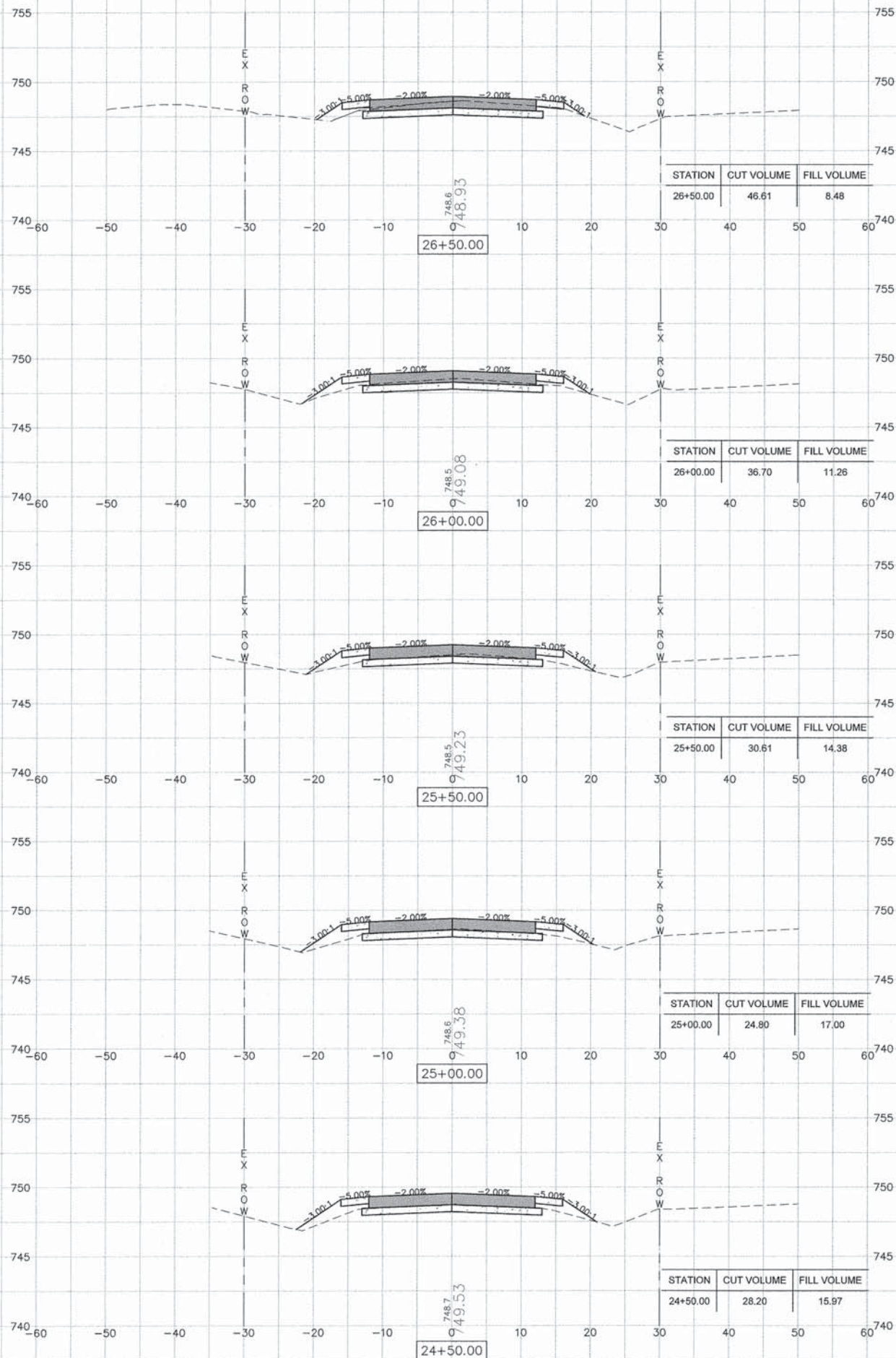
N 6TH STREET CROSS SECTIONS

SCALE: SHEET NO. 13 OF 15 SHEETS

F.A.U. RTE.	SECTION	COUNTY	TOTAL SHEETS	SHEET NO.
6874	14-0079-00-PV	WARREN	15	13

CONTRACT NO. 89690
ILLINOIS FED. AID PROJECT

IL DESIGN FIRM NO. 184-000843



FILE NAME = A15M026-CROSS SECTIONS.DWG
 C10-CROSS SECTIONS
 Missman, Inc.
 Professional Engineers & Land Surveyors

USER NAME = PAR
 PLOT SCALE = 1"=10' HOR 1"=5' VERT
 PLOT DATE = 10-21-15

DESIGNED -- KMN
 DRAWN -- MJB/PAR
 CHECKED -- MJB
 DATE -- 10-21-15

REVISED --
 REVISED --
 REVISED --
 REVISED --

STATE OF ILLINOIS
 DEPARTMENT OF TRANSPORTATION

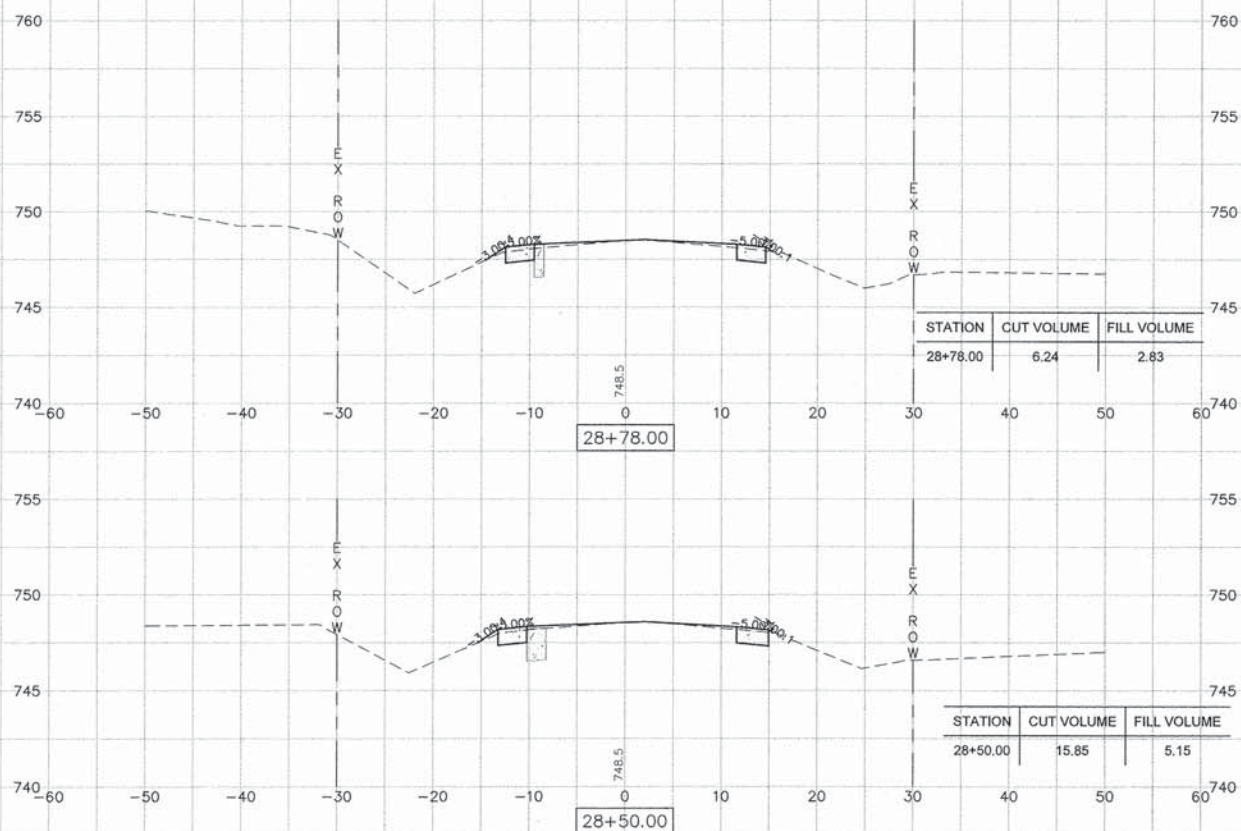
N 6TH STREET CROSS SECTIONS

SCALE: SHEET NO. 14 OF 15 SHEETS

F.A.U. RTE.	SECTION	COUNTY	TOTAL SHEETS	SHEET NO.
6874	14-0079-00-PV	WARREN	15	14

CONTRACT NO. 89690
 ILLINOIS FED. AID PROJECT

IL DESIGN FIRM NO. 184-000843



FILE NAME = A15M026-CROSS SECTIONS.DWG
 C10-CROSS SECTIONS



USER NAME = PAR

PLOT SCALE = 1"=10' HOR 1"=5' VERT

PLOT DATE = 10-21-15

DESIGNED -- KMN

DRAWN -- MJB/PAR

CHECKED -- MJB

DATE -- 10-21-15

REVISED --

REVISED --

REVISED --

REVISED --

STATE OF ILLINOIS
 DEPARTMENT OF TRANSPORTATION

N 6TH STREET CROSS SECTIONS

SCALE: SHEET NO. 15 OF 15 SHEETS

IL DESIGN FIRM NO. 184-000843

F.A.U. RTE.	SECTION	COUNTY	TOTAL SHEETS	SHEET NO.
6874	14-0079-00-PV	WARREN	15	15
				CONTRACT NO. 89690
ILLINOIS FED. AID PROJECT				