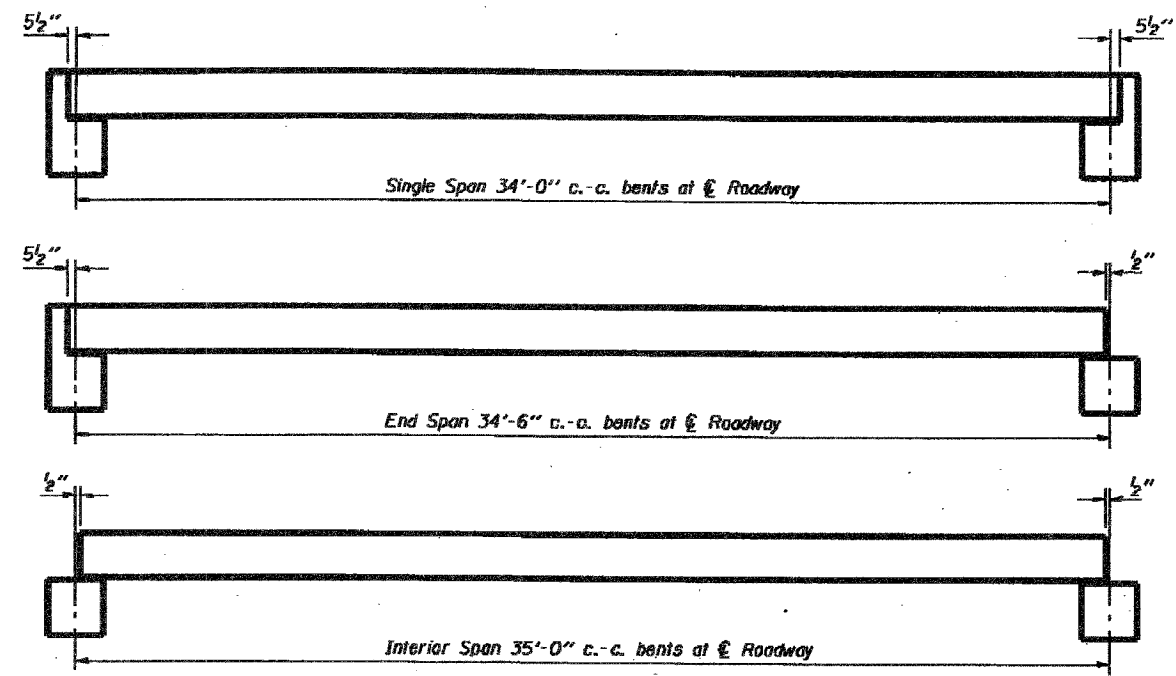
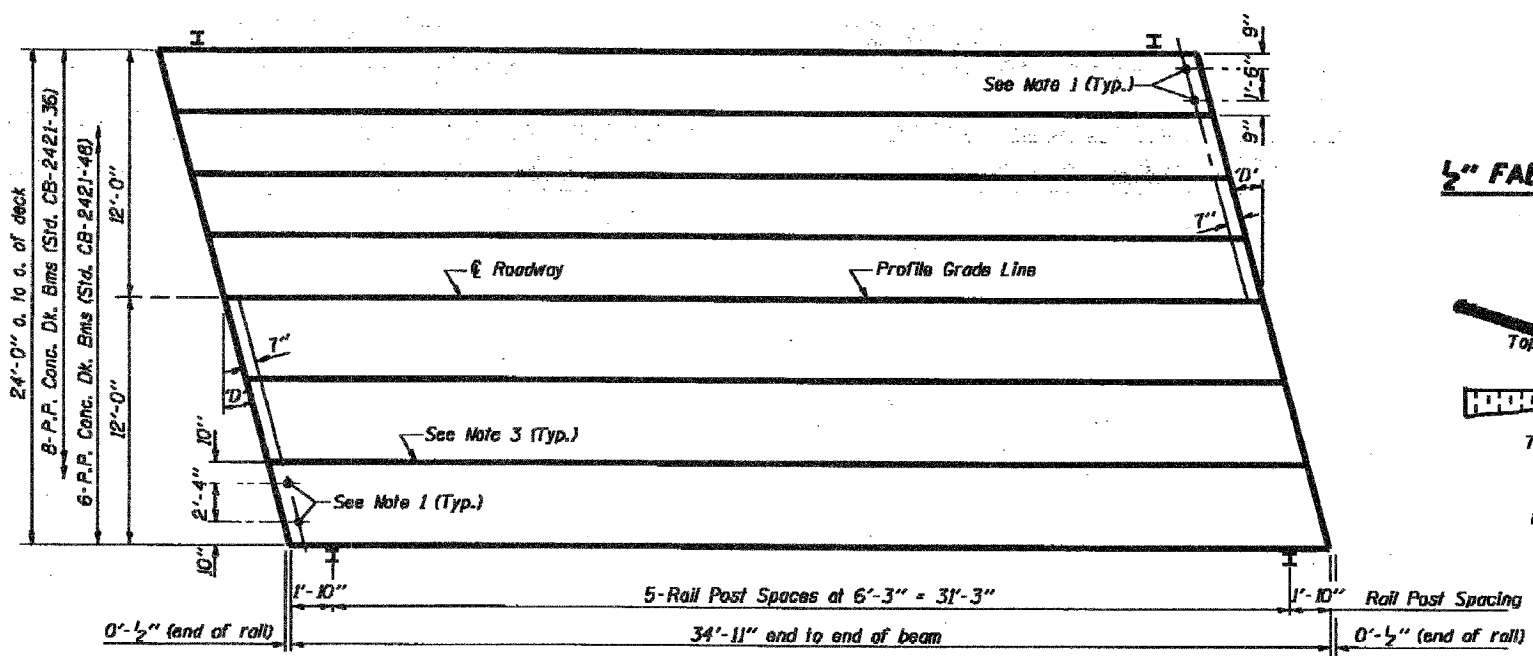


ROUTE	SECTION	COUNTY	TOTAL SHEETS	SHEET NO.
T.R. 200	01-16117-00-BR	JACKSON	15	6
FED PROJ. BROS-077(35)				



TYPICAL ELEVATIONS

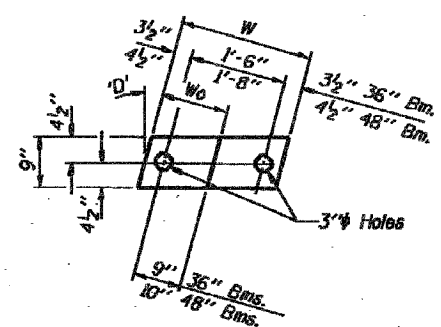
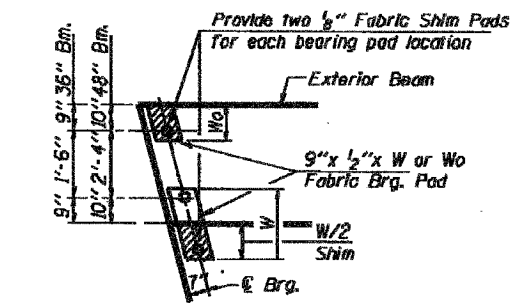


PLAN

('D' = Designated Skew Angle)

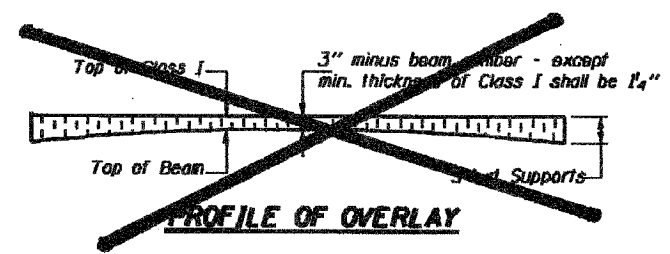
NOTES

1. After beams have been erected, holes shall be drilled into substructure and anchor dowels placed. Dowel holes shall be filled with non-shrink grout to top of beam and allowed to cure min. 24 hrs. prior to grouting the shear keys.
2. Nominal 1" joint at centerline of Pier shall be filled with non-shrink grout.
3. Longitudinal keys shall be grouted.

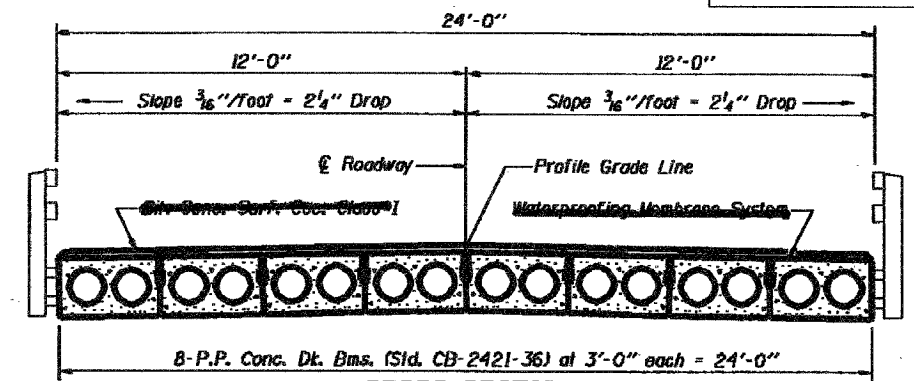


Beam	W	Wo
36"	2'-1"	1'-0 1/2"
48"	2'-5"	1'-2 1/2"

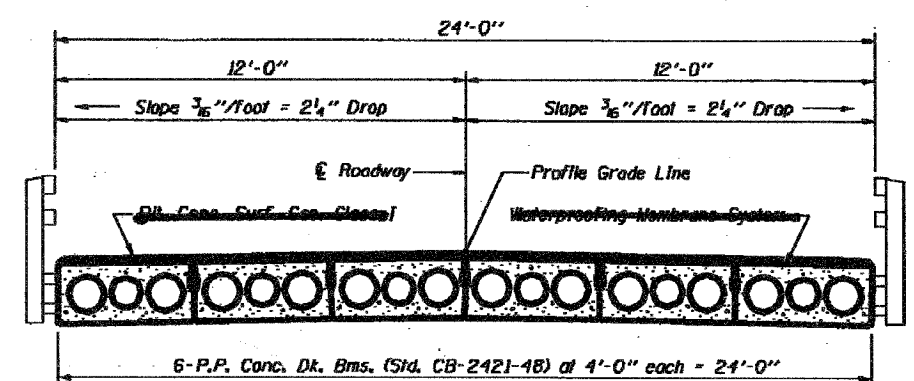
1/2" FABRIC BRG. PAD DETAILS



PROFILE OF OVERLAY



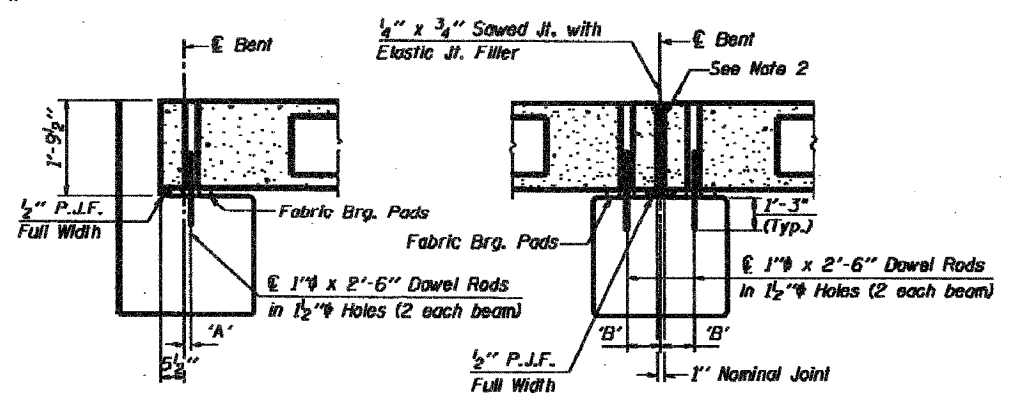
CROSS SECTION



CROSS SECTION

DIMENSIONS 'A' AND 'B'

'D'	5°	10°	15°	20°	25°	30°
A	1 1/2"	1 3/4"	2"	2 1/4"	2 1/2"	2 3/4"
B	2 1/2"	2 3/4"	3"	3 1/4"	3 1/2"	3 3/4"



SECTION AT ABUTS.
(Along centerline of Beams)

SECTION AT PIERS
(Along centerline of Beams)

QUANTITIES FOR ONE SPAN

P.P. Conc. Dk. Bm. 21" Dp.	840 Sq. Ft.
Steel Railing	70 Ft.
Waterproofing Membrane System	22,300 Sq. Ft.

P.P.C. DECK BEAM SUPERSTRUCTURE

24' RDWY.	21" BMS.	35' SPAN	RIGHT
STANDARD CS-2421-35R			

Illinois Department of Transportation

PASSED NOVEMBER 1, 1995

APPROVED NOVEMBER 1, 1995

Engineer of Bridge Design

Engineer of Bridges and Structures